

APVD	ITEM	DESCRIPTION	PC. NO.	QTY.
11-30-90	1	PHASE A BRANCH BUS	12-B-4011-01	1
	2	PHASE B BRANCH BUS	12-B-4012-01	1
	3	PHASE C BRANCH BUS	12-B-4013-01	1
	4	MOUNTING BRACKET	15-B-3020-01	1
	5	5" MAIN COVER PLATE	12-6029-01	1
	6	CIRCUIT ID CARD	11-7505-01	1
	7	CARD HOLDER	11-7506-01	1
	8	1/4-20 X 3/8 SHHWS	11-1553-02	4
	9	1/4-20 X 1 SHHWS	11-1553-09	3
	10	1/4-20 X 4 SRHMS	11-1542-19	2
	11			
	12	BLANK FILLER	12-5531-10	1
	13	NEUTRAL LUG ASSEMBLY	12-B-2105-05	1
	14	STRAP-BUS HARDWARE KIT	11-B-2022-05	1
	15			
	16			
	17			
	18			
	19			
	20			
	21			
	22			
	23			
	24			
	25			
	26			
	27			
	28	INSRTUCTION SHEET	31-1204-01	1
	29	CARTON LABEL	15-A-1027-01	1
	30	CARTON	48001056	1
	31			
	32			
	33			
	34			
	35			

11-30-90	PM	
11-30-90	SH	
11-30-90	MC	
11-30-90	BY	
11-30-90	CHK	
11-30-90	SH	
11-30-90	MC	
11-30-90	BY	
11-30-90	CHK	

FOR I-T-E TYPE BREAKERS: CLF, CFD6 70-225 AMPERES
FOR (SHALLOW) PANELBOARDS

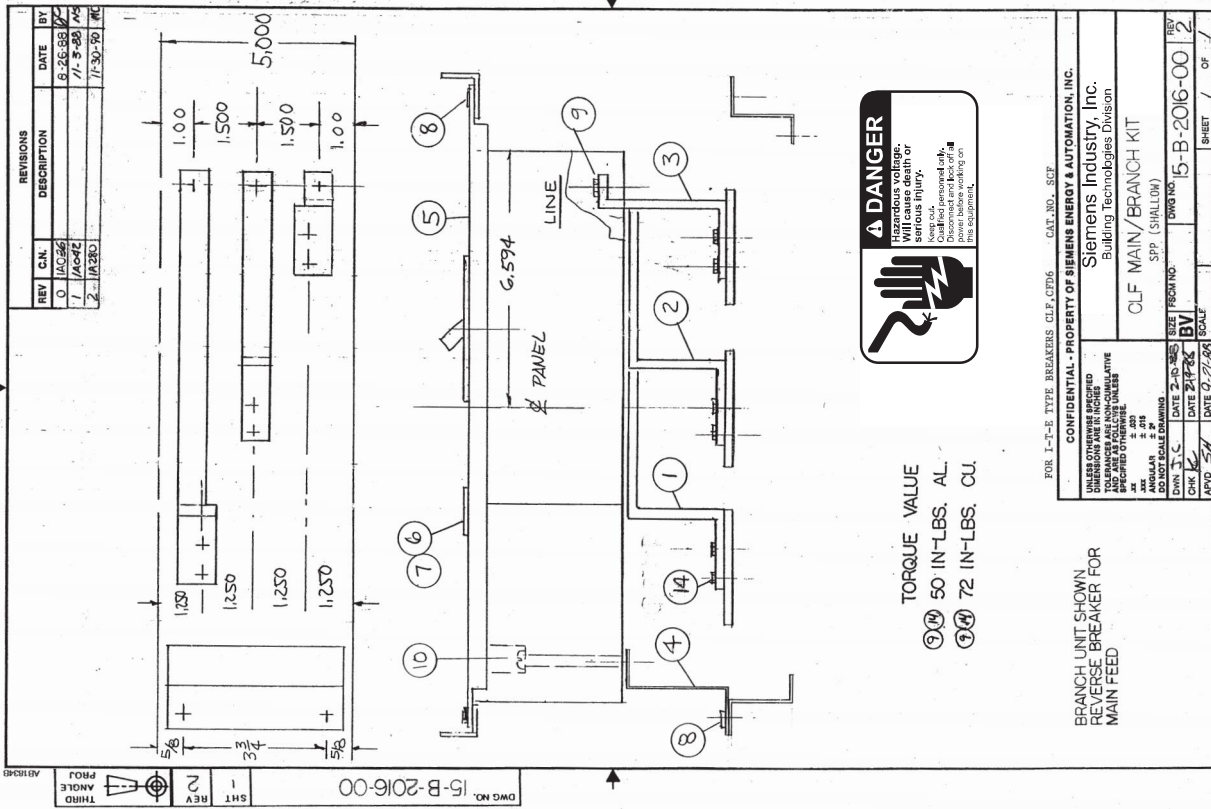
15-B-2016-00	REV	DATE	BY	SCALE	SHEET	OF
15-B-2016-00	1	07/28	BV	1/8"	1	1
15-B-2016-00	2	07/28	BV	1/8"	2	2

225 AMP CLF BREAKER
S4, COPPER BRANCH BUS, CAT. NO. SCF

15-B-2016-03
Dwg No.
Sht. 1 Of 1

Confidential - property of
Siemens Industry, Inc.
Building Technologies Division

Rev.



REV	C.N.	DESCRIPTION	DATE	BY
0	1/0/96		08-26-98	AC
1	1/0/96		11-9-98	AC
2	1/30/90		11-30-90	AC

BRANCH UNIT SHOWN
REVERSE BREAKER FOR
MAIN FEED

FOR I-T-E TYPE BREAKERS CLF, CFD6 CAT. NO. SCF

CONFIDENTIAL - PROPERTY OF SIEMENS ENERGY & AUTOMATION, INC.
UNDER NO CIRCUMSTANCES SHALL THIS DOCUMENT BE REPRODUCED OR TRANSMITTED IN ANY FORM OR BY ANY MEANS, ELECTRONIC OR MECHANICAL, INCLUDING PHOTOCOPYING, RECORDING, OR BY ANY INFORMATION STORAGE AND RETRIEVAL SYSTEM. VIOLATION OF THIS NOTICE SHALL BE CAUSALY RESPONSIBLE FOR ALL DAMAGES AND LOSSES, INCLUDING REASONABLE ATTORNEY'S FEES.

CLF MAIN/BRANCH KIT
SPP (SHALLOW)

DWG NO. 15-B-2016-00
DATE 07/28
SCALE 1/8"

APVD 5/7

FOR USE WITH CFD6 FRAME BREAKERS MOUNTED
IN SPP/FPP/S4/F1/P4 PANELBOARDS (SHALLOW BOX).