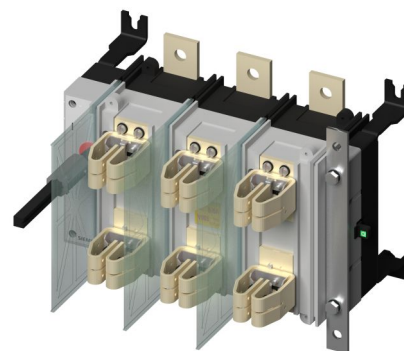


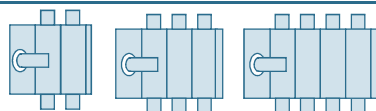
SIEMENS

SENTRON SUPERSWITCH

Switch Disconnecter Fuse - Size 4



3KL84...-.. (500A-800A)
3KA84...-..(630A-1600A)



IEC 60947-1
IEC 60947-3



Operating Instruction



EN

⚠ DANGER

Hazardous voltage will cause death or serious injury. Turn off and lock out all power supplying this device before working on this device. Replace all covers before power supplying this device is turned on.



NOTICE

Installation & Maintenance must be carried out by qualified personnel.



Required tools



2.5 mm



13 mm
19 mm



0.5 x 3 mm

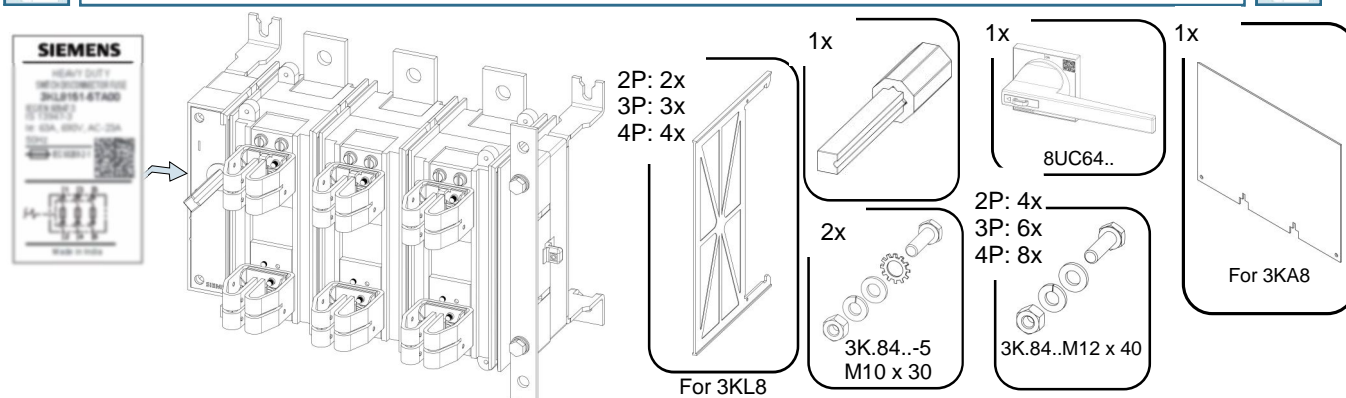


PZ 5

cal. ISO 6789



Contents

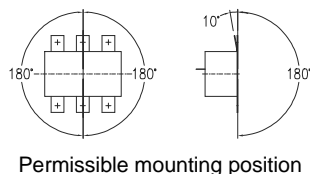
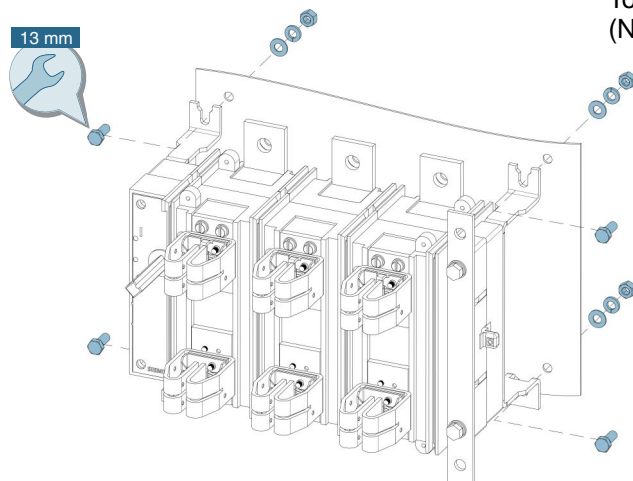


Assembly

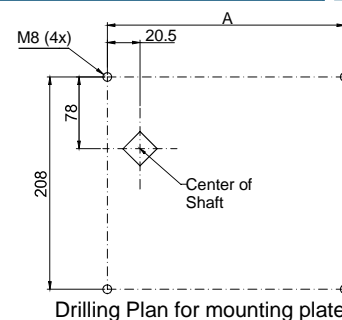


Mounting Details:

2P/3P/4P : M8 x 20 (4x)
Torque 10....14 Nm
(Not in scope of supply)



Permissible mounting position



POLE	A
2P	228
3P	315
4P	402

Connection

3KL841...

3KL842.../3KA842....

3KL8343.../3KA843....

Max. Lug Size.... 2 X 185 mm² M12 X 40

Max. Busbar Size.....2 X 50 X 5 mm M12 x 40

Torque 20 Nm to 28 Nm

3KA844...../3KA845.../3KA846

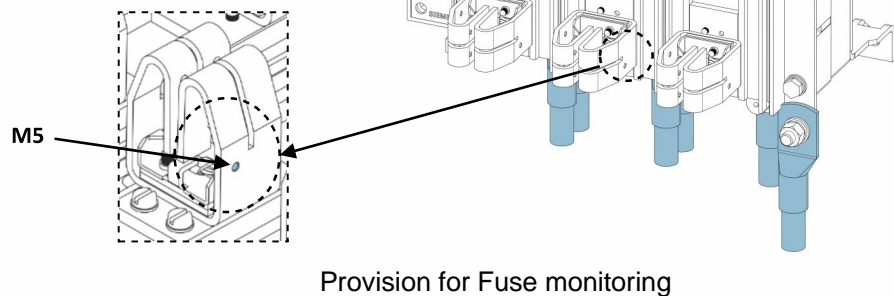
Max. Busbar Size.....2 X 60 X 5 mm M12X40

Torque 20 Nm to 28 Nm

3KL844...../3KA884.....5 Neutral Link

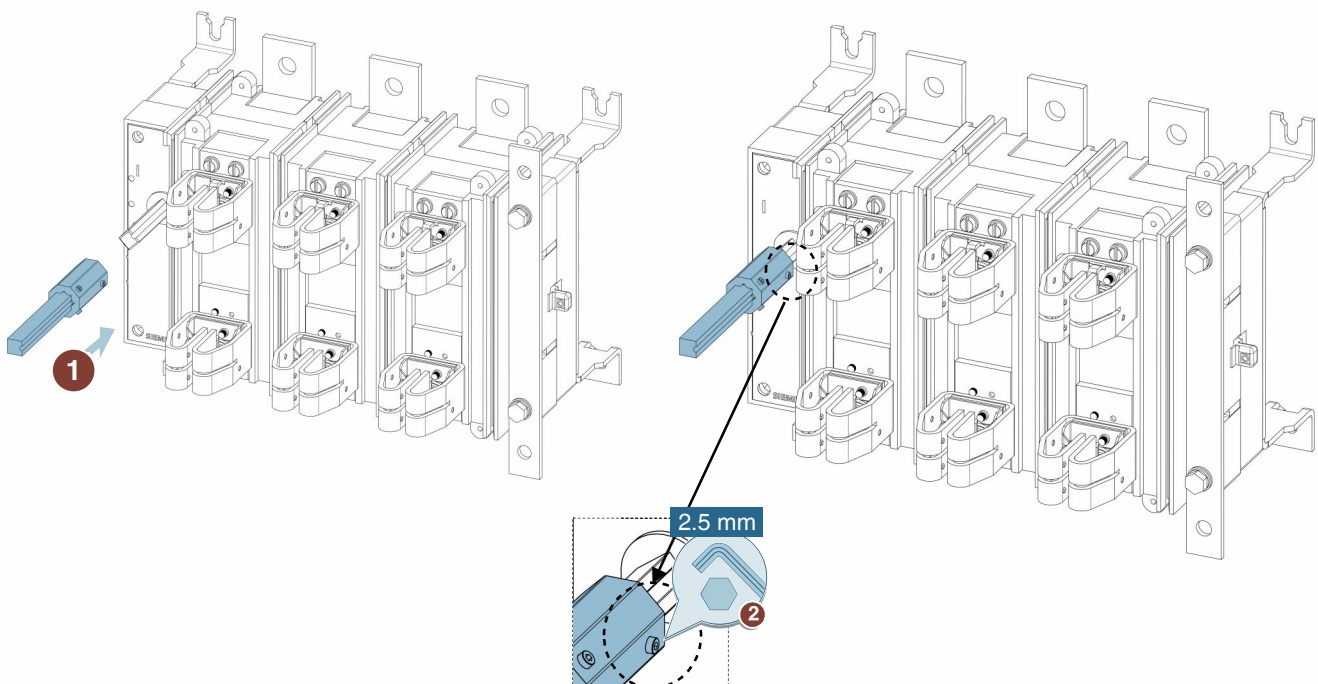
Max. Lug Size.... 120 mm² M10 x 30 (2x)

Torque 10 Nm to 28 Nm



Assembly

Installation of Shaft



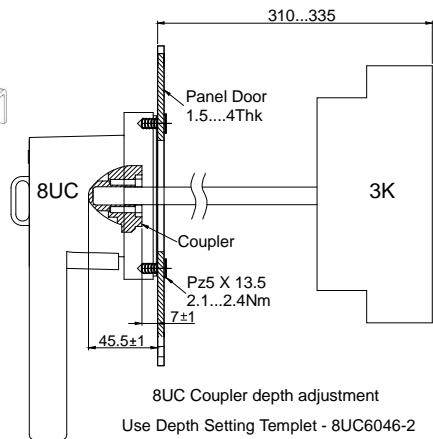
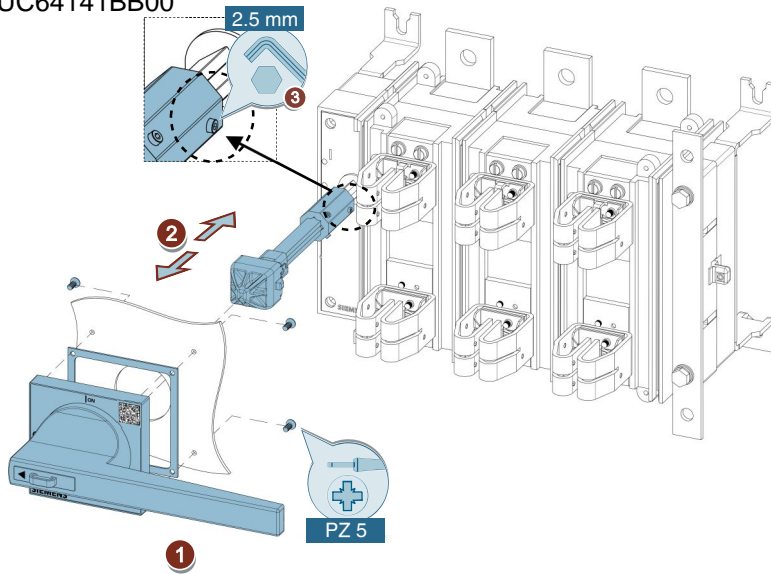


Assembly



Mounting Details for Front Drive

8UC64141BB00



Adjust Depth of Drive as per dimensional plan

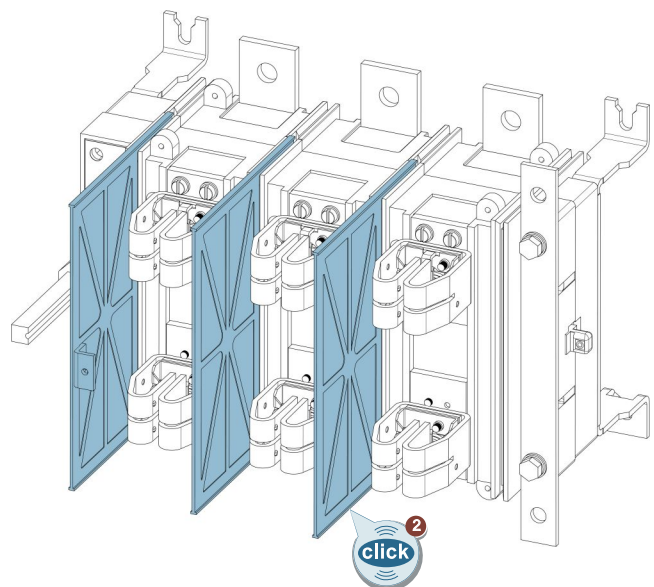
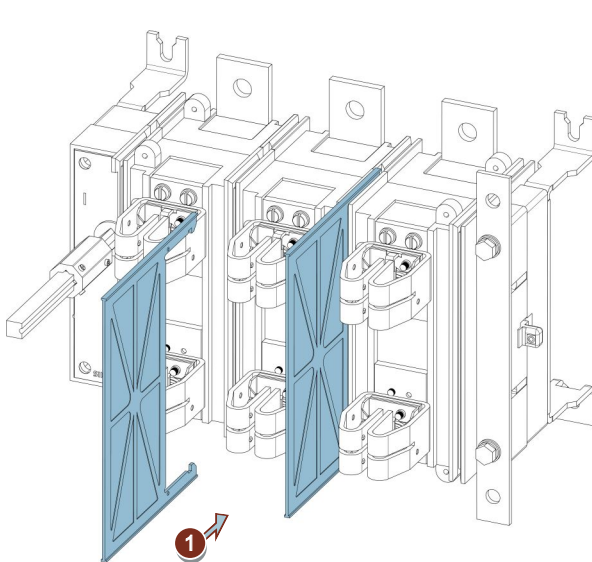


Assembly

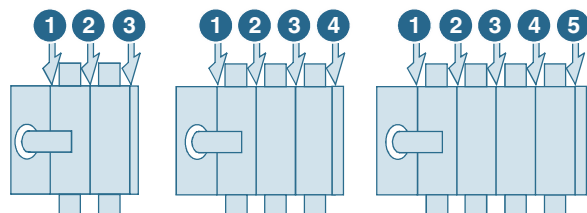


Phase Barrier:

3KX84330AE

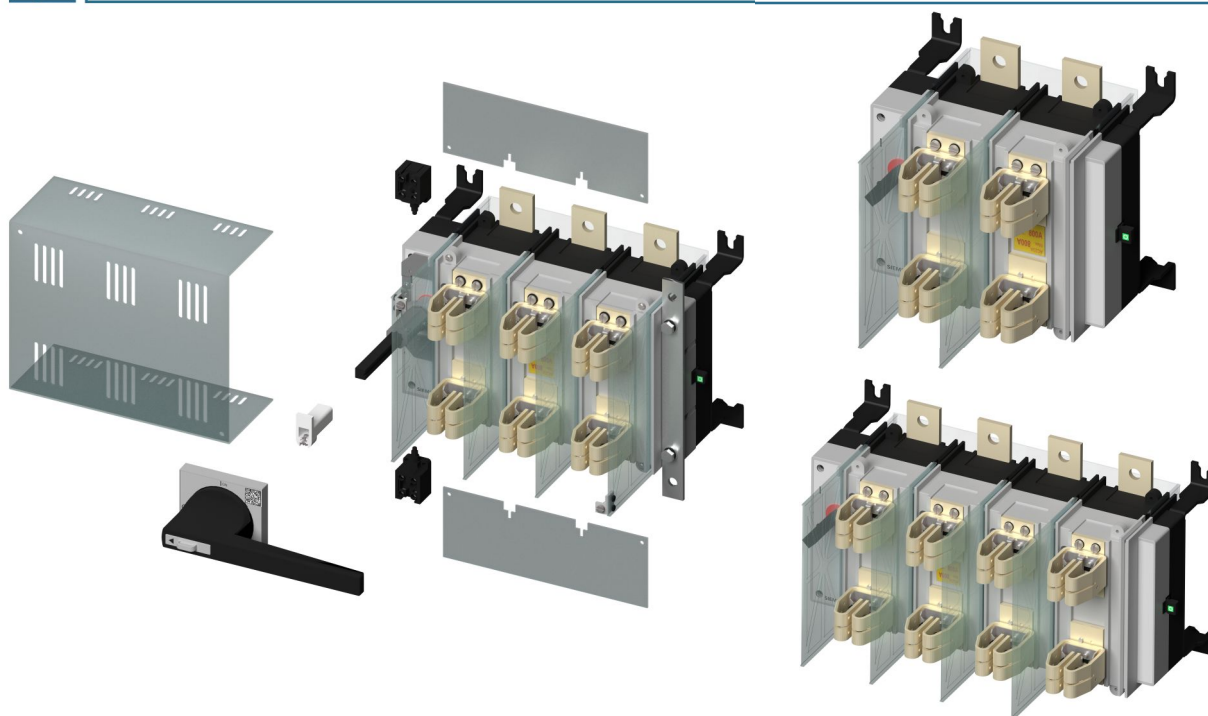


- 2P : Phase Barrier in position 1 & 2 are essential
- 3P : Phase Barrier in position 1, 2 & 3 are essential
- 4P : Phase Barrier in position 1, 2, 3 & 4 are essential





Assembly

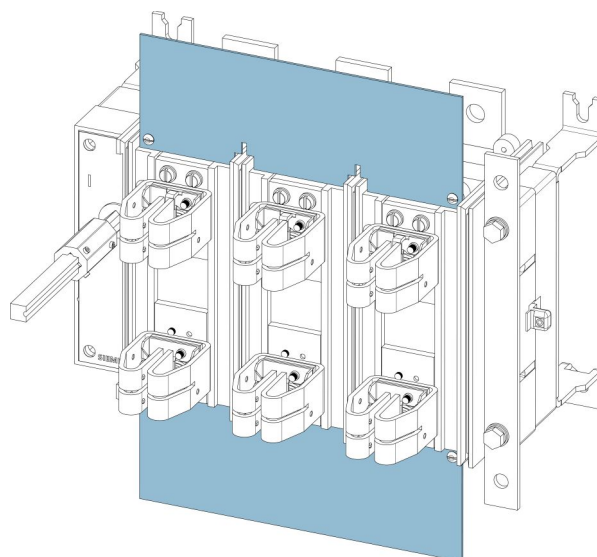
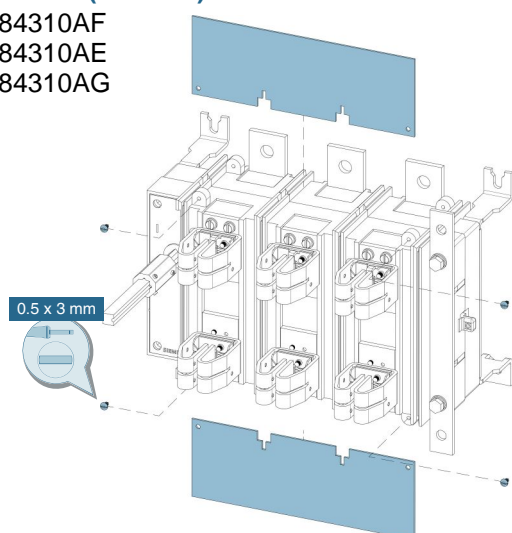


Terminal cover (For 3KL)

2P : 3KX84310AF

3P : 3KX84310AE

4P : 3KX84310AG



Rear Cover

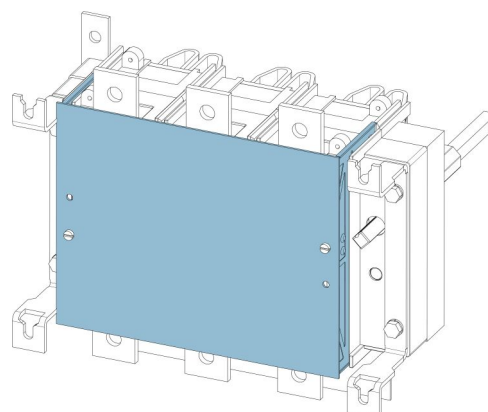
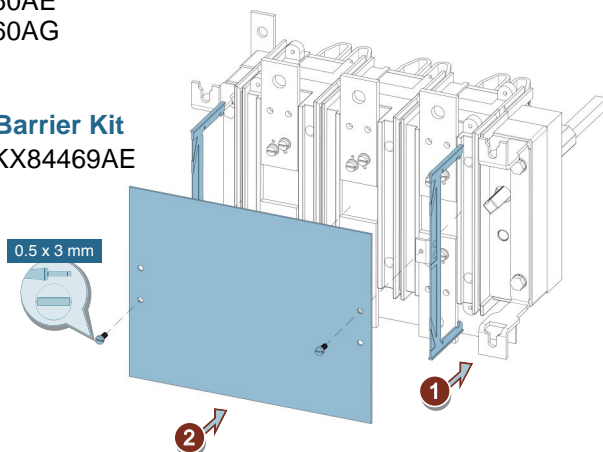
2P : 3KX84360AF

3P : 3KX84360AE

4P : 3KX84360AG

Rear Phase Barrier Kit

2P/3P/4P : 3KX84469AE





Assembly



Fuse Cover:

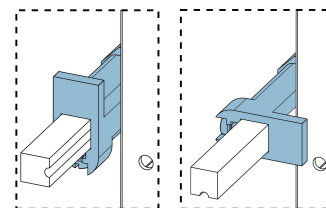
2P (DIN/BS): 3KX84300HF/3KX84300JF

3P (DIN/BS): 3KX84300HE/3KX84300JE

4P (DIN/BS): 3KX84300HG/3KX84300JG

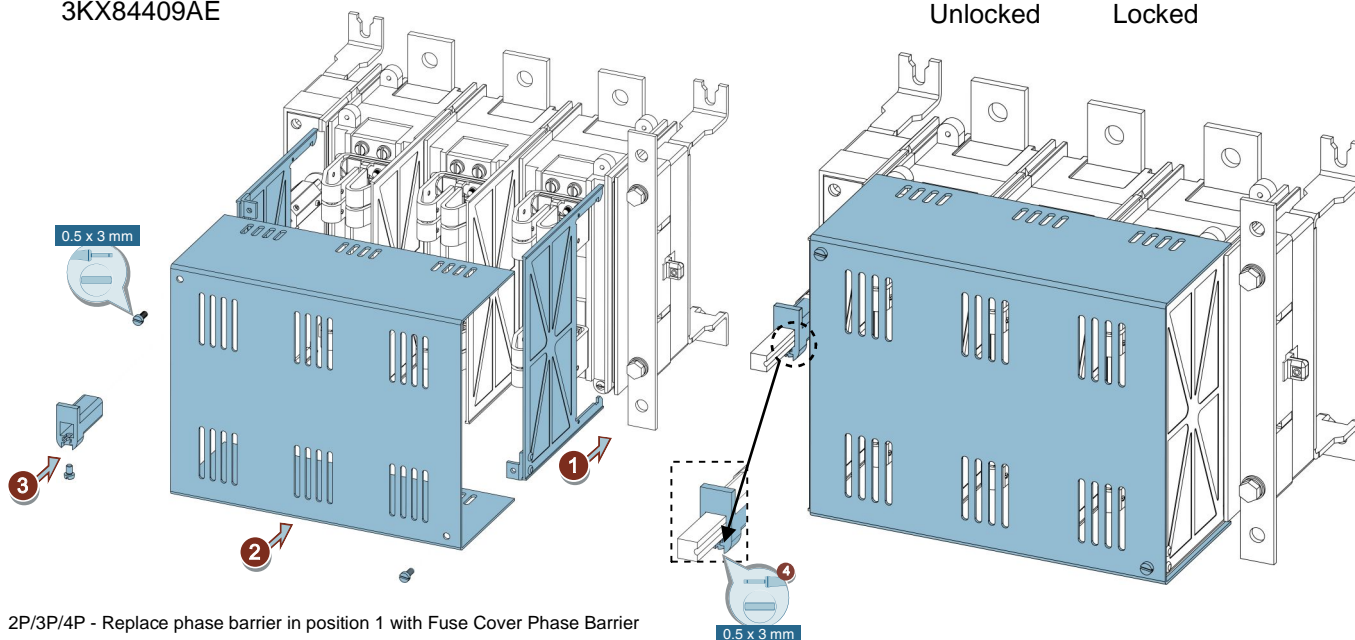
Fuse Cover Phase Barrier kit

3KX84409AE



Unlocked

Locked



2P/3P/4P - Replace phase barrier in position 1 with Fuse Cover Phase Barrier

2P : Add Fuse cover phase Barrier in Position 3

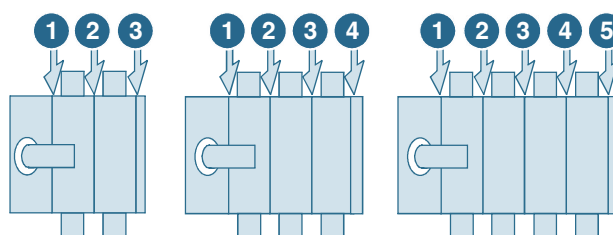
2P : Add Fuse cover phase Barrier in Position 4

3P : Add Fuse cover phase Barrier in Position 5

EN

WARNING

Hazardous Voltage. Will Cause death or Serious Injury.
Ensure Switch is in OFF position.



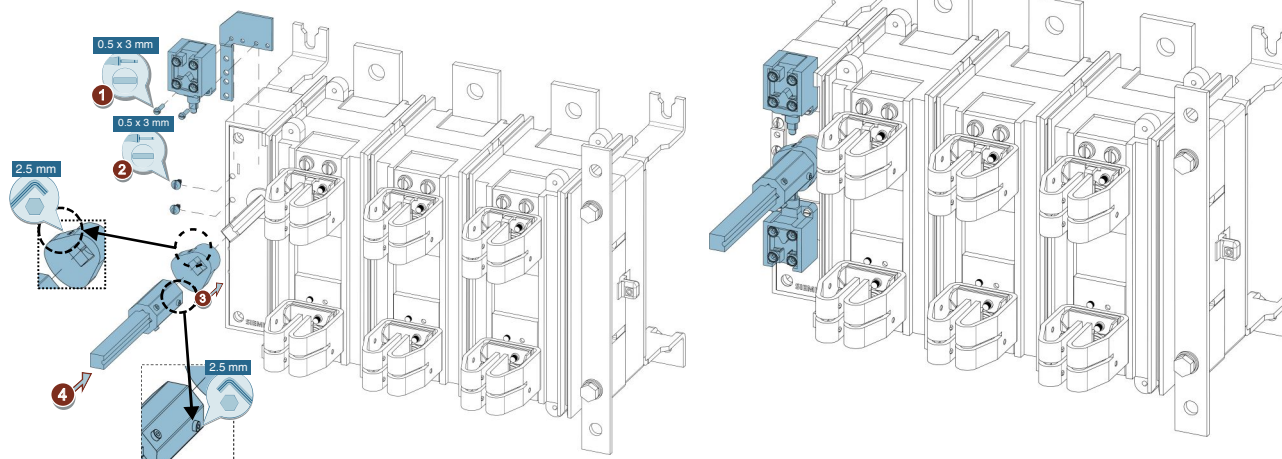
Assembly



Mounting Aux. Switch

3KX35821YC

3KX35821YD

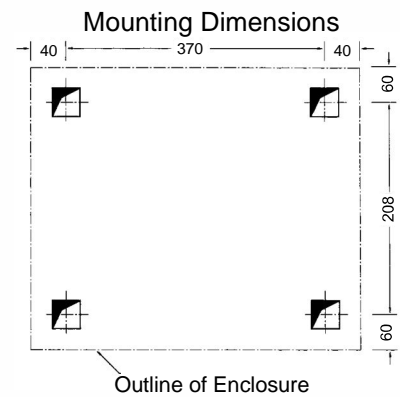
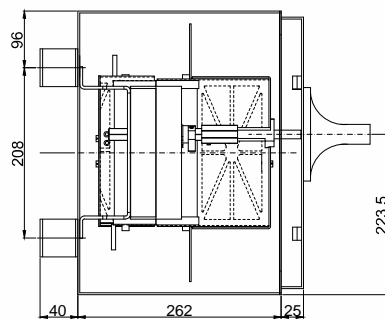
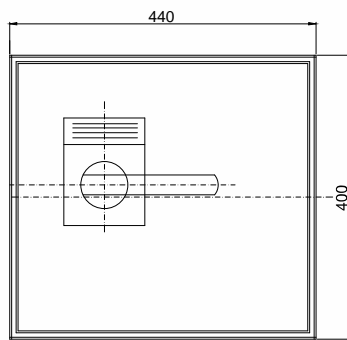




Information



Dimension Details for SDF in Enclosure

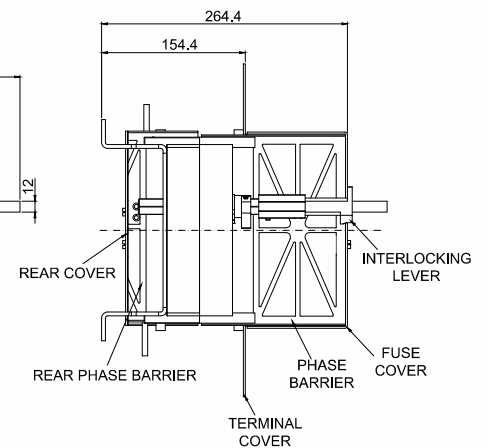
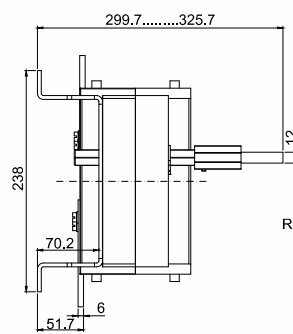
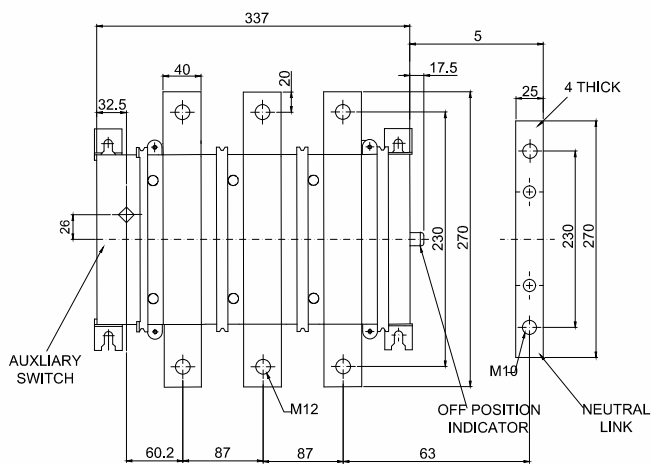


Information

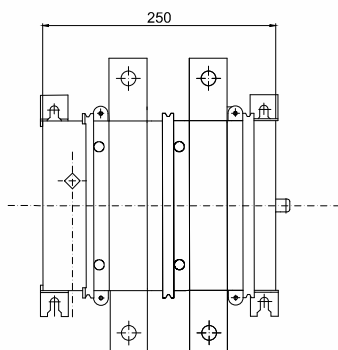


Overall Dimensional details

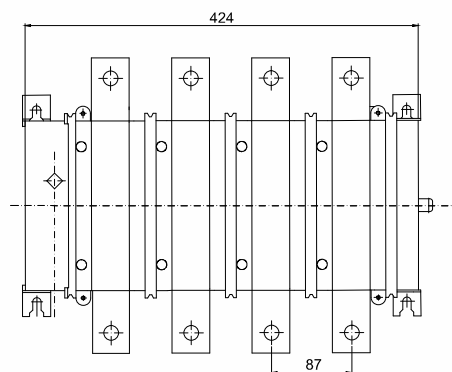
3P(3KL8)/3P+N



3KL8: 2P

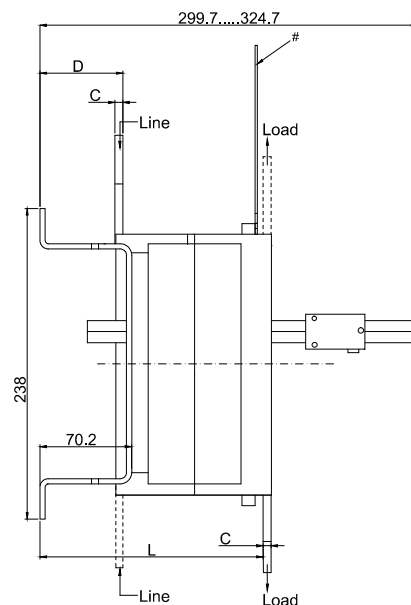
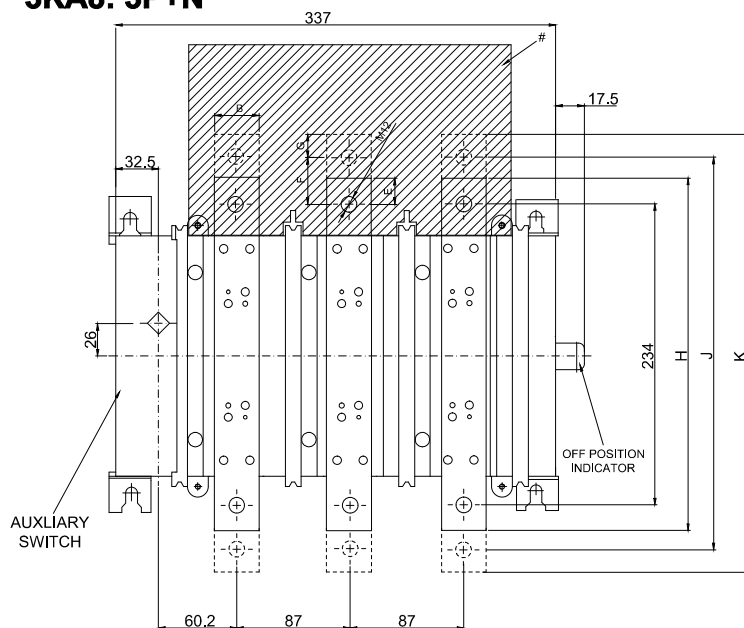


3KL8: 4P

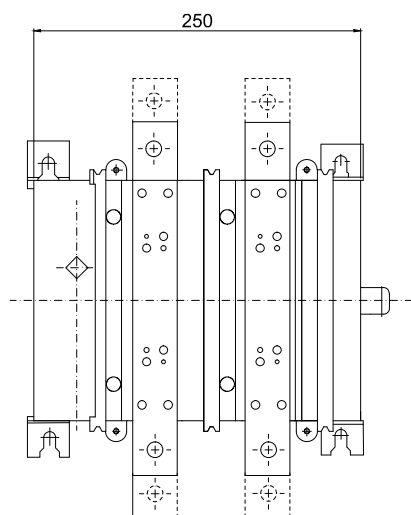
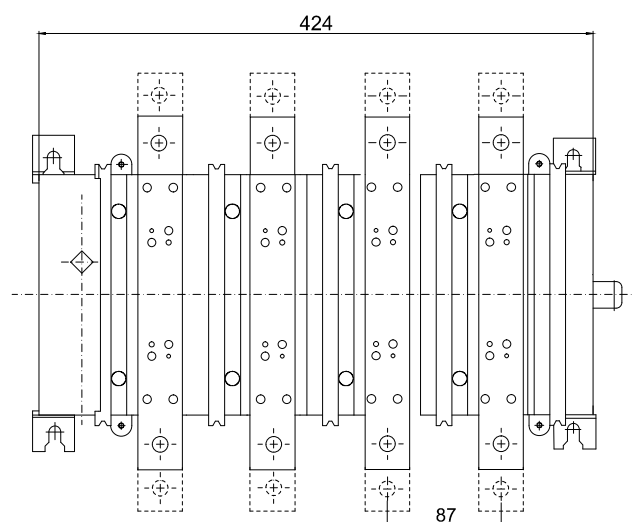


For other Dimensions refer 3P/3P+N

For other Dimensions refer 3P/3P+N

3KA8: 3P+N

- 1) 3KA84.2-..... :- Top Incoming
2) 3KA84.3-..... :- Bottom Incoming

3KA8: 2P**3KA8: 4P**

For missing Dimension refer 3P

Terminal cover only on Line side

For missing Dimension refer 3P

Type	B	C	D	E	F	G	H	J	K	L
3KA....2.... 3KA....3.... 842/843/844	40	6	64.4	20	-	-	274	-	-	153.9
3KA....2.... 3KA....3.... 845/846	50	10	58.4	-	40	20	-	314	354	159.9

Disposal

Siemens Products are environment-friendly, which predominantly consist of recyclable materials.

For Disposal, we recommend Disassembling and separation into following materials.

METALS. Segregate into Ferrous & Non Ferrous types for recycling through authorised dealer.

Email: ics.india@siemens.com

PLASTICS: Segregate as per material type for recycling through an authorised dealer.

Because of the long lifetime of Siemens products the disposal guidelines maybe replaced by other national regulations when taking the product out of service.

The local customer care service is available at any time to answer disposal-related questions

Customer Care Toll-free no. - 1800 209 0987

Product development is a continuous process. Consequently, the data indicated in this leaflet is subject to change without prior notice. For the latest issue contact our sales offices.