

Ratings and Markings

Type	Current Range (A)	HACR Rated	SWD Marked	HID Marked
1 pole	15 - 125	15 - 125	15 - 20	15 - 50
2 pole	15 - 125	15 - 125	—	15 - 50
3-pole	15 - 125	15 - 125	—	15 - 50

Shipping Weight:

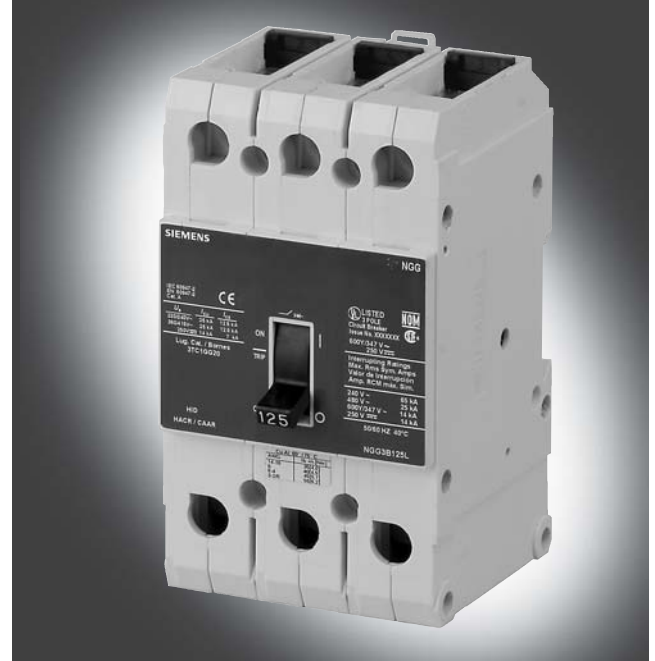
0.9 lbs. / 0.4 kgs.	1 Pole
1.9 lb. / 0.9 kgs.	2 Poles
2.9 lbs. / 1.2 kgs.	3 Poles

Terminal Connectors

Lug Information			
Breaker Amp Rating (A)	Wire Size (AWG)	Torque Inch-lb. (NM)	Lug Catalog No.
15 - 30	#14 - #10 Al	35 (4.0)	3TC1Q1 (pkg. of 3)
	#8 Al	40 (4.5)	
35 - 125	#8 Al or Cu	40 (4.5)	3TC1GG20 (pkg. of 3)
	#3 - 1/0 Cu	55 (6.2)	
	#6 - #4 Al or Cu	45 (5.1)	
	#3 - 2/0 Al	55 (6.2)	

60/75° C wire

Includes retainer clips



Interrupting Ratings (max. RMS symmetrical amperes kA)

Breaker Type	Poles	UL489							IEC 60947-2 (Ics = 50% Icu)					
		Volts AC							Volts DC		Volts AC		Volts DC	
		120	240	277	347	480	600Y/347	125	125/250	240	415	125/250		
NGG/NGB	1	65	—	25	14	—	—	14	—	25	—	—		
	2, 3	—	65	—	—	25	14	—	14 ①	65	25	14		

40°C, 50/60Hz

① 2-pole only

Ordering Information

Type NGG/NGB 1, 2 and 3 Poles		
Ampere Rating I _n	NGG Catalog Number (Cable In - Cable Out)	NGB Catalog Number (Panelboard Mounting)
15	NGG __ B015L	NGB __ B015B
20	NGG __ B020L	NGB __ B020B
25	NGG __ B025L	NGB __ B025B
30	NGG __ B030L	NGB __ B030B
35	NGG __ B035L	NGB __ B035B
40	NGG __ B040L	NGB __ B040B
45	NGG __ B045L	NGB __ B045B
50	NGG __ B050L	NGB __ B050B
60	NGG __ B060L	NGB __ B060B
70	NGG __ B070L	NGB __ B070B
80	NGG __ B080L	NGB __ B080B
90	NGG __ B090L	NGB __ B090B
100	NGG __ B100L	NGB __ B100B
110	NGG __ B110L	NGB __ B110B
125	NGG __ B125L	NGB __ B125B

1 = 1 pole
2 = 2 pole
3 = 3 pole

L = Line & Load
side lugs ②

1 = 1 pole
2 = 2 pole
3 = 3 pole

B = Load
side lugs ③

② This "L" indicates Line Side and Load Side lugs are supplied as standard. To order an NGG without lugs, remove the L suffix.

③ This "B" indicates Load Side lugs are supplied as standard. To order an NGB without lugs, remove the B suffix.

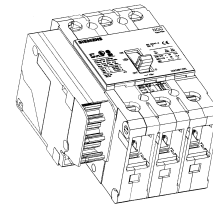
Shunt Trip — Contains (1) shunt trip device. A combination includes a shunt trip device and an auxiliary switch with 1A-1B contacts.

Control Voltage			Shunt Trip		Shunt Trip and Auxiliary Switch Combination	
AC	DC	Current Draw	Catalog Number		Catalog Number	
120	—	0.09A	CQDST120		CQDST120AAS	
240	—	0.50A	CQDST240		CQDST240AAS	
277	—	0.55A	CQDST277		CQDST277AAS	
380-415	—	—	STRGT415 ①		ASTGT415 ①	
480	—	0.45A	CQDST480		CQDST480AAS	
600	—	0.50A	CQDST600		CQDST600AAS	
—	12	1.20A	CQDST12		CQDST12DAS	
—	24	0.80A	CQDST24		CQDST24DAS	
—	48	0.80A	CQDST48		CQDST48DAS	
—	125	0.35A	CQDST125		CQDST125DAS	

① This is an IEC only rating

Auxiliary Switch — Contains (1) or (2) sets of “A” contacts and “B” contacts.

Maximum Control Supply Voltage U _s		Single Auxiliary Switch 1A-1B Contact		Double Auxiliary Switch 2A-2B Switch Contacts	
AC	DC	Catalog Number	Max. Operational Current	Catalog Number	Maximum Operational Current
240	125	CQDA1	@240C AC – 15A @125V DC – 0.5A	CQDA2	@240V AC – 15A @125V DC – 0.5A



Mounted left side only, not available on single pole breakers

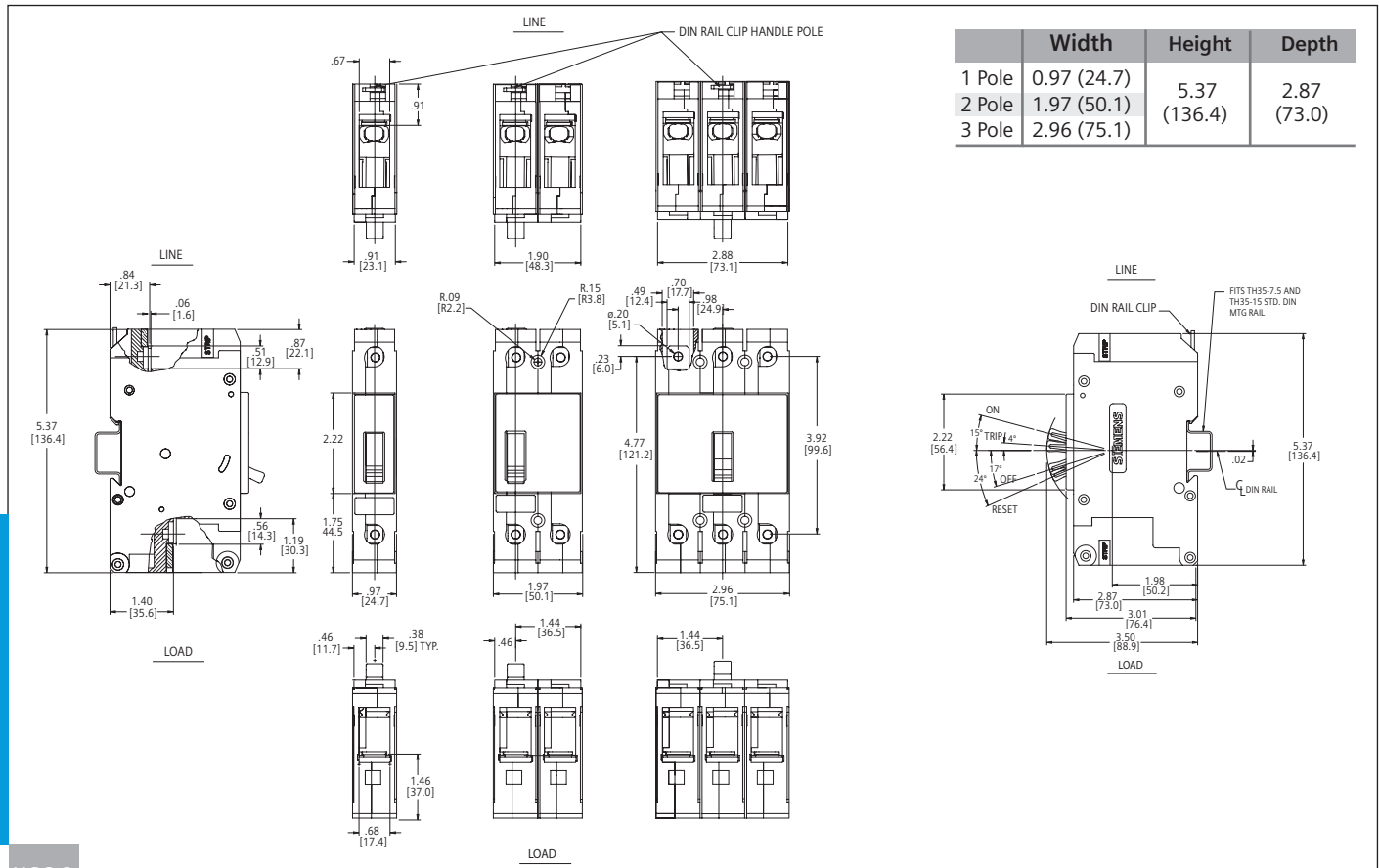
Alarm Switch — Contains (1) sets of “A” contacts and “B” contacts.

Maximum Control Supply Voltage U _s		Single Alarm Switch Catalog Number	Auxiliary and Alarm Switch Catalog Number	Maximum Operational Current
AC	DC			
240	125	CQDBA	CQDA1BA	@240V AC – 15A @125V DC – 0.5A

Available Accessory Combinations

Shunt Trip	Aux. Switch	Alarm Contact
1	0	0
0	1	0
0	2	0
1	1	0
0	0	1
0	1	1

UL NGG Frame Outline Drawing – 1, 2, 3 Pole



	Width	Height	Depth
1 Pole	0.97 (24.7)	5.37 (136.4)	2.87 (73.0)
2 Pole	1.97 (50.1)	5.37 (136.4)	2.87 (73.0)
3 Pole	2.96 (75.1)	5.37 (136.4)	2.87 (73.0)