

## Installation Instructions



### ⚠ DANGER

**Hazardous Voltage.**  
Will cause death or serious injury.

Turn off and lock out all power  
supplying this device before working  
on this device.  
Replace all covers before power  
supplying this device is turned on.

### ⚠ PELIGRO

**Tensión Peligrosa.**  
Puede causar la muerte o lesiones  
graves.

Desenergice totalmente antes de instalar o  
darle servicio. Reemplace todas las barreras  
y cubiertas antes de energizar el interruptor.

### ⚠ DANGER

**Tension Dangereuse.**  
Danger de morbu risquede blessures  
graves.

Couper l'alimentation de l'appareil erer  
avant de travailler. Remplacez toutes les  
couvertures avant que l'approvisionnement  
de pouvoir soit alimenté.

These instructions outline the recommended installation  
procedure.

and lock out all power supplying this device before  
installing. Verify that **NO** voltage is present before pro-  
ceeding with task.

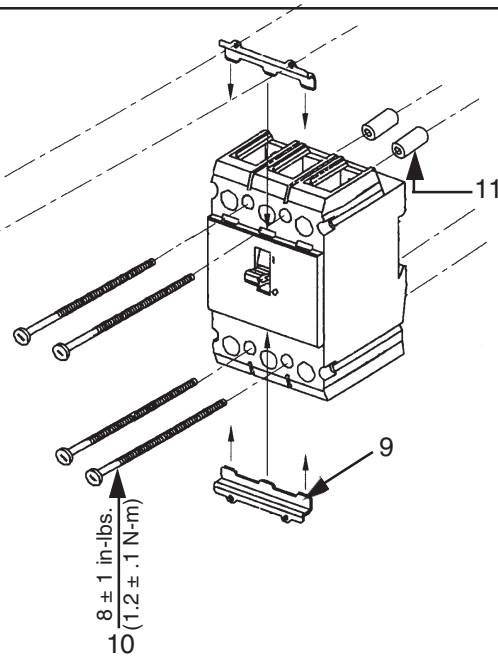
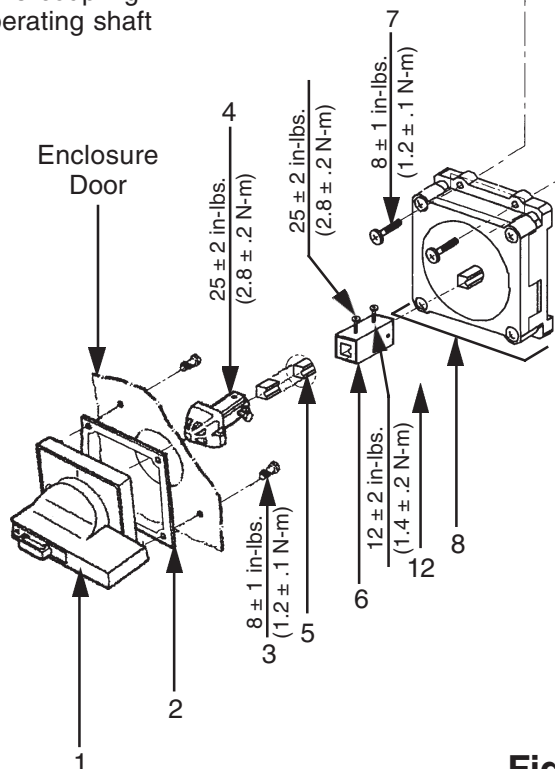
### 1. Circuit Breaker Preparation

The circuit breaker should be in the OFF/"O" position  
before installing the rotary handle operator kit. Turn off

The complete kit is Cat. No. RHOCQVD and consists of  
assemblies RHOH62 & CQDOP.

#### ROTARY HANDLE - RHOH62:

1. Handle with masking frame
2. Gasket
3. 4 Handle mounting screws (p4 x 11.5mm)
4. Drive coupling
5. Operating shaft



#### OPERATOR - CQDOP:

6. Shaft coupling
7. 4 Operator screws (#6-32 x .375 in.)
8. Operator
9. 2 Clips

#### OPTIONAL: (Items not included in kit)

Mount Screw Kit - CQDSMK:

10. 4 Breaker mounting screws (#6-32 x 2.75 in.)
11. 2 Spacers (CQD only)

**Fig. 1**  
Kit

	<b>⚠ DANGER</b> Hazardous Voltage. Will cause death or serious injury.	<b>⚠ PELIGRO</b> Tensión Peligrosa. Puede causar la muerte o lesiones graves.	<b>⚠ DANGER</b> Tension Dangereuse. Danger de mort ou de blessures graves.
	Turn off and lock out all power supplying this device before working on this device. Replace all covers before power supplying this device is turned on.	Desenergice totalmente antes de instalar o darle servicio. Reemplace todas las barreras y cubiertas antes de energizar el interruptor.	Couper l'alimentation de l'appareil erer avant de travailler. Remplacez toutes les couvertures avant que l'alprovisionnement de pouvoir soit alimenté.

# Installation Instructions

## 2. Enclosure Preparation

Determine where you will locate, and later mount, the rotary handle on the enclosure door. It should be located a minimum of 4 in. (100mm) away from the hinge (See Fig. 3 ). Look inside the enclosure and make sure you have free panel space to mount the circuit breaker in the desired location.

## 3. Circuit Breaker Mounting

Using the breaker and handle mounting template (Fig. 2), locate the holes for the circuit breaker inside the enclosure. Make sure that the breaker is square with the enclosure. Drill [.106 in. (2mm)] and tap [#6-32] the circuit breaker mounting holes to receive #6-32 x 2.75 in. mounting screws. Mount the circuit breaker using the 4 mounting screws (Fig. 1, #9).

**NOTE:** "Line/On" (CQD only) side screws require spacers (Fig. 1, #11). Tighten the screws to 8 ± 1 in-lbs. (1.2 ± .1 N-m).

## 4. Breaker Operator Mounting

Slide the clips (Fig. 1, #9) into the slots located on the circuit breaker. Mount the operator using 4, #6-32 x .375 in. screws (Fig. 1, #7). Mount the operator over the clips onto the circuit breaker.

**NOTE:** Refer to Fig. 1 for proper orientation of the operator and shaft. Tighten the screws to 8 ± 1 in-lbs. (1.2 ± .1 N-m).

## 5. Shaft Coupling Mounting

Align the non-interchangeability feature (groove and lug) with the groove in the breaker operator shaft. Slide the shaft coupling onto the breaker operator and tighten the screw to 12±2 in-lbs. (1.44±0.2 N-m).

**NOTE:** Refer to Fig. 1, #6 for proper orientation of the shaft coupling.

## 6. Rotary Handle Preparation

Choose one of the breaker mounting holes to be used as a reference point. From this hole, measure the distance to the closest vertical and horizontal planes (or enclosure surfaces). Close the enclosure door and locate the template. On the exterior face of the door, use dimensions from the vertical and horizontal planes. This location corresponds with the breaker mounting holes as shown on the template. Fasten or tape the breaker and handle mounting template (Fig. 2) to this location and use

it to locate the rotary handle mounting and shaft clearance holes. Drill the 4 rotary handle holes to receive p4 x 11.5mm mounting screws (Fig. 1, #3). Drill and/or cut the shaft clearance hole. Deburr holes when necessary. Vacuum all metal chips. Discard the breaker and handle mounting template upon completion of this step.

## 7. Shaft and Drive Coupling Mounting

Inserts the shaft into the open end of the shaft coupling (Fig. 1, #6) on the operator and tighten the screw to 25±2 in-lb. (2.8±0.2 N-m) refer to Fig. 1 for proper orientation of the shaft. Close the door with the shaft sticking through. Mark the shaft 0.060" in from the surface of the door as shown in fig. 4. Remove the shaft and cut at the mark. Reinstall into operator and attach the drive coupling (Fig. 1, #4) to the end of the shaft and tighten the screw to 25±2 in-lb. (2.8±0.2 N-m). Measure the distance from the tip of drive coupling to the outside surface of the door it should be 1.14" as shown in fig. 4.

**NOTE:** Pullout force is 25 lbs. (110 N). Using a higher pull force will pull the shaft from the shaft coupling and/or destroy the mechanism.

## 8. Rotary Handle Mounting

With the enclosure door open, mount the rotary handle (Fig. 1, #1) onto the enclosure door. Mount the rotary handle using the 4, p4 x 11.5mm (Fig. 1, #3) mounting screws.

**NOTE:** Refer to Fig. 1 for proper orientation of rotary handle. Tighten the screw to 8 ± 1 in-lbs. (1.2 ± .1 N-m). Debur holes when necessary.

## 9. Installation Check Out

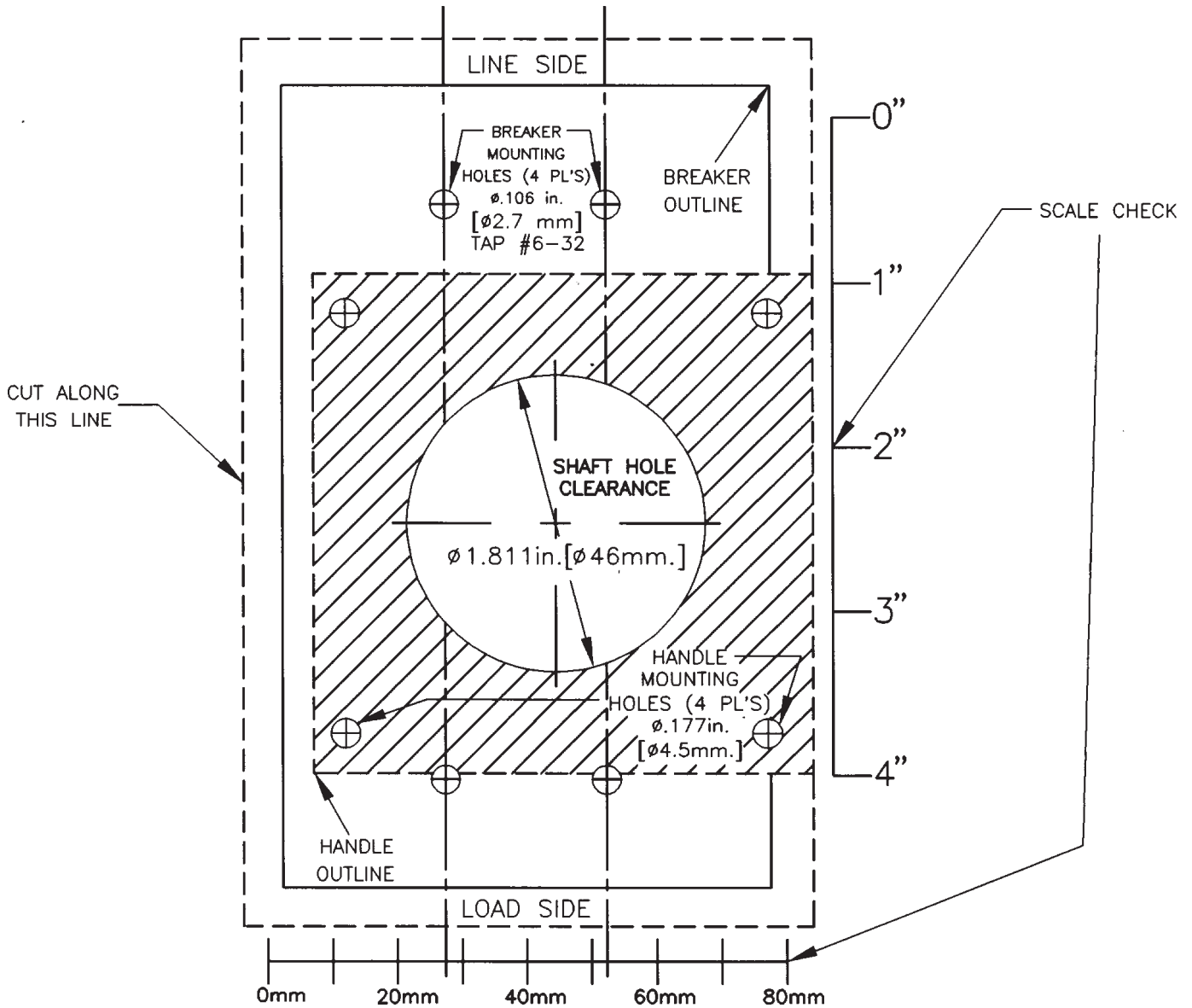
Insure that when the door is closed, the handle interlocks with the shaft in all handle positions except OFF/"O". Adjust drive coupling if problems persist, in closing the enclosure door.

## 10. Safety/Features


The lockout feature can be utilized only when the handle is in the OFF/"O" position. (Refer to Fig. 5) This feature prevents unwanted tampering with the circuit breaker. Padlock shackle diameters of .31 in. (8.5mm) max. to .25 in. (6mm) min. can be used. Provisions may be made to open the door with the circuit breaker in the ON/"I" position. The door may

⚠ DANGER	⚠ PELIGRO	⚠ DANGER
 Hazardous Voltage. Will cause death or serious injury.	Tensión Peligrosa. Puede causar la muerte o lesiones graves.	Tension Dangereuse. Danger de morbu risquede blessures graves.
 Turn off and lock out all power supplying this device before working on this device. Replace all covers before power supplying this device is turned on.	Desenergice totalmente antes de instalar o darle servicio. Reemplace todas las barreras y cubiertas antes de energizar el interruptor.	Couper l'alimentation de l'appareil erer avant de travailler. Remplacez toutes les couvertures avant que l'approvisionnement de pouvoir soit alimenté.

# Installation Instructions



**Fig. 2**  
 Breaker & Handle Mounting Template

	<b>⚠ DANGER</b> Hazardous Voltage. Will cause death or serious injury.	<b>⚠ PELIGRO</b> Tensión Peligrosa. Puede causar la muerte o lesiones graves.	<b>⚠ DANGER</b> Tension Dangereuse. Danger de mort ou de blessures graves.
	Turn off and lock out all power supplying this device before working on this device. Replace all covers before power supplying this device is turned on.	Desenergice totalmente antes de instalar o darle servicio. Reemplace todas las barreras y cubiertas antes de energizar el interruptor.	Couper l'alimentation de l'appareil erer avant de travailler. Remplacez toutes les couvertures avant que l'alprovisionnement de pouvoir soit alimenté.

# Installation Instructions

be opened by punching out the .1 in. (2.5mm) diameter hole in the bottom of the handle base. (See Fig. 3) A .06 in. (2mm) diameter punch must be driven in .2 in. (5mm) to break through the plastic. To defeat the operator in the ON/'I' position, slide a .06 in. (2mm) diameter pin through the hole to a depth of .3 in. (8mm) and at the same time, pull out on the

handle. The enclosure door should open.

**CAUTION:** Power could be **ON** in the enclosure. To close the enclosure door, the non-interchangeability groove must be turned in the same direction as the handle lever arm. Refer to Fig. 3 & 5 for illustrations.

