



SAFETRAN  
*systems*

## SOFTWARE UPGRADE INSTRUCTIONS

# INSTALLING SOFTWARE RELEASE 9V121-01E IN THE 80214 PROCESSOR MODULE (FOR MODEL 3000 GCP)

December 2000

DOCUMENT NO. SIG-00-00-21

VERSION A

Safetran Systems Corporation, California Division  
10655 7th Street, Cucamonga, California 91730  
1-800-793-SAFE

Copyright © 2000 Safetran Systems Corporation

## **PROPRIETARY INFORMATION**

**SAFETRAN SYSTEMS CORPORATION** has a proprietary interest in the information contained herein and, in some instances, has patent rights in the systems and components described. It is requested that you distribute this information only to those responsible people within your organization who have an official interest.

This document, or the information disclosed herein, shall not be reproduced or transferred to other documents or used or disclosed for manufacturing or for any other purpose except as specifically authorized in writing by **SAFETRAN SYSTEMS CORPORATION**.

## **WARRANTY INFORMATION**

**SAFETRAN SYSTEMS CORPORATION** warranty policy is as stated in the current Terms and Conditions of Sale document. Warranty adjustments will not be allowed for products or components which have been subjected to abuse, alteration, improper handling or installation, or which have not been operated in accordance with Seller's instructions. Alteration or removal of any serial number or identification mark voids the warranty.

## **SALES AND SERVICE LOCATIONS**

Technical assistance and sales information on **SAFETRAN** products may be obtained at the following locations:

SAFETRAN SYSTEMS CORPORATION  
2400 NELSON MILLER PARKWAY  
LOUISVILLE, KENTUCKY 40223  
TELEPHONE: (502) 244-7400  
FAX: (502) 244-7444  
SALES & SERVICE: 1-800-626-2710  
WEB SITE: <http://www.safetran.com>

SAFETRAN SYSTEMS CORPORATION  
CALIFORNIA DIVISION  
10655 7th STREET  
CUCAMONGA, CALIFORNIA 91730  
TELEPHONE: (909) 987-4673  
1-800-793-SAFE  
FAX: (909) 945-2662

## A. BACKGROUND

Safetran periodically releases enhanced application software for the Model 3000 Grade Crossing Predictor. The latest revision (identified as 9V121-01E) is described in Safetran Customer Service Bulletin 2-00. The following pages contain instructions for upgrading the application software in the 80214 Processor Module.

## B. SOFTWARE RELEASE DISK – REVISION E

Date: 10-31-2000	Check Sum: 8A4F090E4F48
Product Name: 3000 GCP	CSB: 2-00
Module Number: 80214	Disk P/N: 9V341-A01B
Memory Device: 9V121	Disk EDP No.: Z224-9V341-A010
Software Revision: 01E	

## C. SOFTWARE VERSION IDENTIFICATION

The software version resident in the 3000 GCP can be determined by one of two methods. In both methods, the software version is the second message displayed during the power-up/test cycle and appears for approximately two seconds. This latest version, E, is displayed as 9V121-01E.

The two methods are:

Method 1. Interrupt power to the GCP (set the case **POWER** switch to **OFF** and then back to **ON**). Observe the GCP display for the version.

### NOTE

Interrupting GCP power will activate the crossing.

Method 2. Momentarily remove the keypad from the GCP case and then replace it. Observe the display for the version.

### NOTE

Removing the GCP keypad will **NOT** activate the crossing.

## D. WHEN AND WHERE TO UPGRADE

The new software version may be uploaded into any 80214 module from a laptop computer in the field if so desired by the railroad.

### **NOTE**

The new E-level software provides additional programming steps; however, the parameters covered by these steps are defaulted “OFF” or do not affect crossing operation. Therefore, any crossing upgraded to E-level software will operate as it did prior to the software upgrade once the previous application parameters (steps) listed on the history card are reprogrammed.

### **E. PARTS/TOOLS REQUIRED**

- Laptop Personal Computer (DOS compatible) with 3.5-inch floppy drive
- RS-232 cable, 9-pin female to 9-pin male
- Safetran provided software release disk (9V341-A01B)
- Software Upgrade Instructions (document number SIG-00-00-21, Version A)

### **F. UPGRADE PROCEDURE**

Step 1            Verify that GCP **POWER** switch is **ON**.

Step 2            **IMPORTANT! – Review the Program and Function Mode menus and compare the current system operating parameters (warning time, frequency, etc.) with those recorded on the Application History Card. Also verify the number of Linearization steps on T1 and T2. If necessary, update the history card for future reference.**

Step 3            Connect personal computer serial port (COM1) to 80214 module 9-pin RS-232 connector using 9-pin female to 9-pin male cable (see figure 1).

Step 4            Install 9V341-A01B floppy disk (supplied by Safetran) in appropriate computer drive.

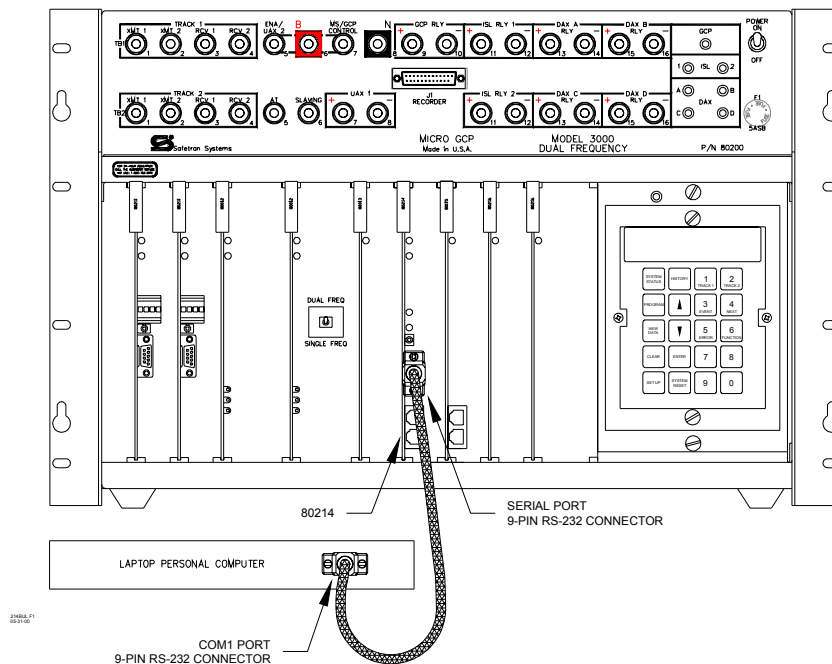
Step 5            Exit to DOS or Windows® DOS shell.

Step 6            At **C:\>** prompt type **A:**

### **NOTE**

Substitute correct drive letter if drive A is not used.

Step 6.1        Press the **Enter** key.



**Figure 1. 80214 Processor Module Serial Port to PC Interconnection Diagram**

Step 7 At **A:\>** prompt type **LOADBOOT**

Step 7.1 Press the **Enter** key.

The Setup screen displays (see figure 2).



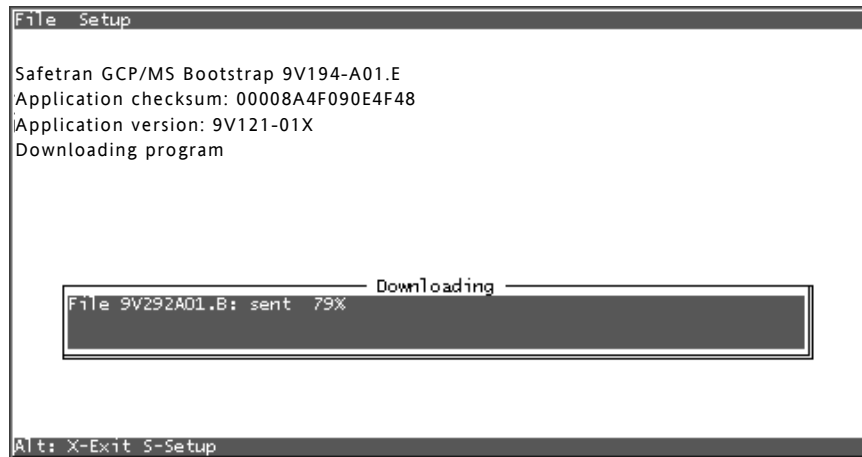
214F2.tif  
01-06-00

**Figure 2. Processor Module Software Installation Setup Screen**

Step 8 Set the GCP **POWER** switch to **OFF**.

Step 8.1 Press and hold the GCP keypad **SET UP** key. While watching the PC display, set the GCP **POWER** switch to **ON**.

Step 8.2 Continue to hold the **SET UP** key until a **Downloading** window appears briefly within the Setup screen (see figure 3).



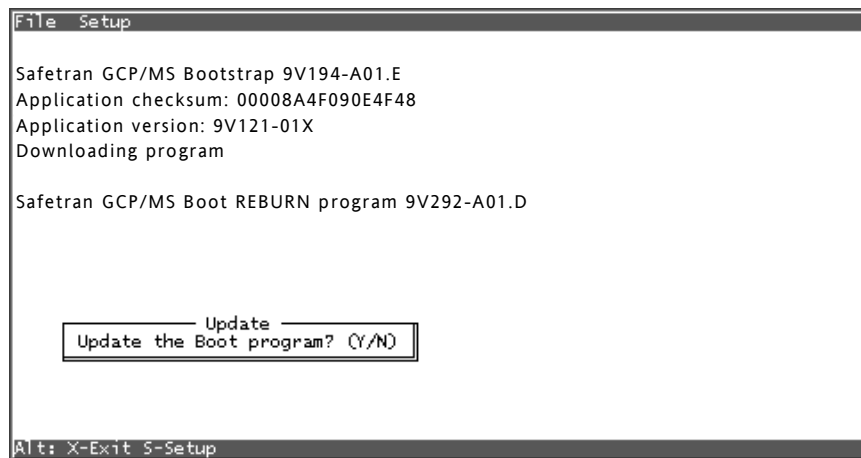
214F3.tif  
12-05-00

**Figure 3. Boot Program Downloading Window**

**NOTE**

Due to variations in version of currently loaded software, "Application version" shown in figure 3 is indicated as "01X". Your display will indicate the actual version currently loaded.

At the completion of boot program downloading, an **Update** dialog box displays within the Setup screen (see figure 4).



214F4  
12-05-00

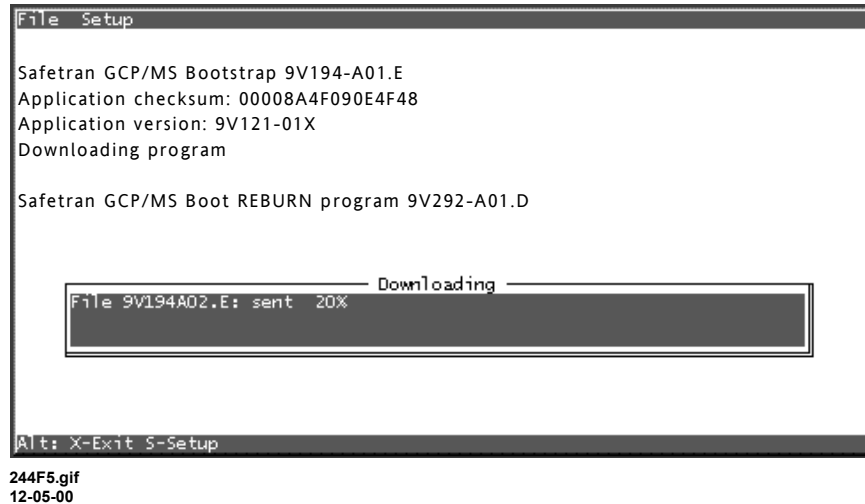
**Figure 4. Boot Program Update Dialog Box**

**NOTE**

Due to variations in version of currently loaded software, "Application version" shown in figure 4 is indicated as "01X". Your display will indicate the actual version currently loaded.

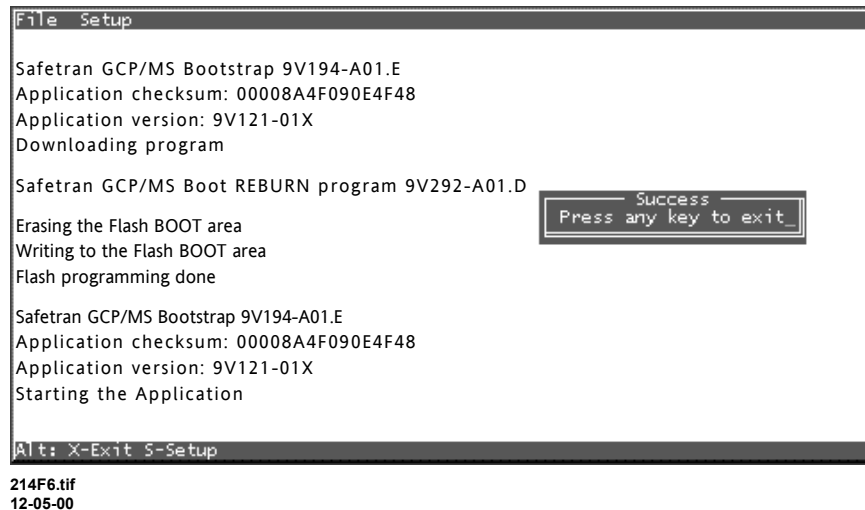
Step 9 While watching the PC display, type **Y**.

A boot reburn program **Downloading** window appears briefly in the Setup screen (see figure 5).



**Figure 5. Boot Reburn Program Download Window**

At completion of the boot reburn program download, the **Success** window displays within the Setup screen (see figure 6).



**Figure 6. Boot Program Update Success Window**

**Step 10**

Press any key.

The Setup screen closes and the DOS window displays.

**Step 11**

At **A:\>** prompt type **INSTALL**.

**Step 11.1**

Press the **Enter** key.

The Setup screen displays (see figure 2).

**NOTE**

Due to variations in version of currently loaded software, “Application version” shown in figure 5 is indicated as “01X”. Your display will indicate the actual version currently loaded.

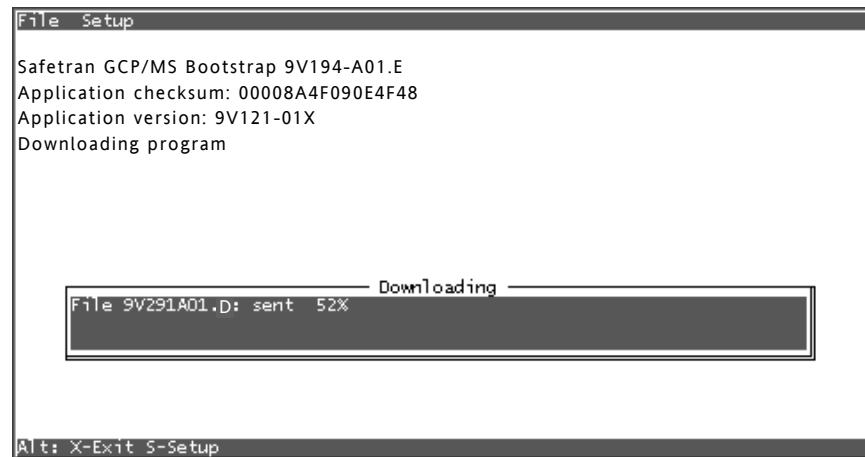
**NOTE**

Due to variations in version of currently loaded software, “Application version” shown in figure 6 is indicated as “01X”. Your display will indicate the actual version currently loaded.

Step 12 Set the GCP **POWER** switch to **OFF**.

Step 12.1 Press and hold the GCP keypad **SET UP** key. While watching the PC display, set the GCP **POWER** switch to **ON**.

Step 12.2 Continue to hold the **SET UP** key until a **Downloading** window appears briefly within the Setup screen (see figure 7). Release the **SET UP** key.



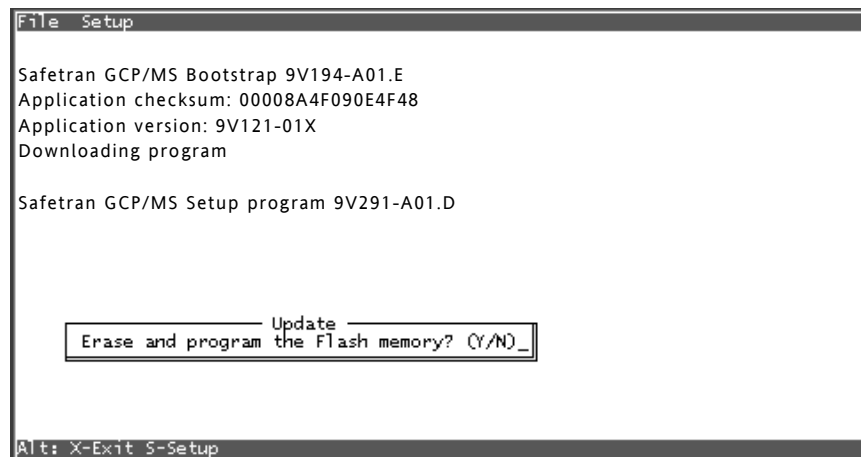
214F7.tif  
12-05-00

**Figure 7. Setup Program Download Window**

**NOTE**

Due to variations in version of currently loaded software, “Application version” shown in figure 7 is indicated as “01X”. Your display will indicate the actual version currently loaded.

At completion of download, an **Update** dialog box displays within the Setup screen (see figure 8).



214F8.tif  
12-05-00

**Figure 8. Setup Program Flash Memory Update Dialog Box**

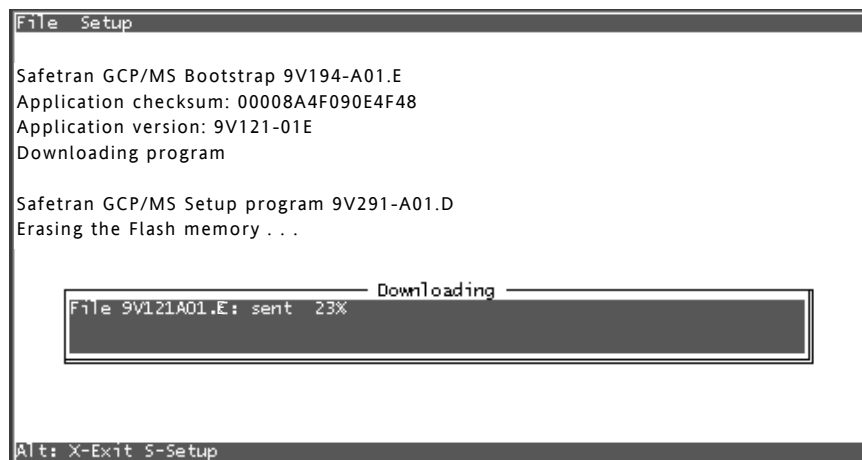
**NOTE**

Due to variations in version of currently loaded software, “Application version” shown in figure 8 is indicated as “01X”. Your display will indicate the actual version currently loaded.

Step 13 Type **Y**.



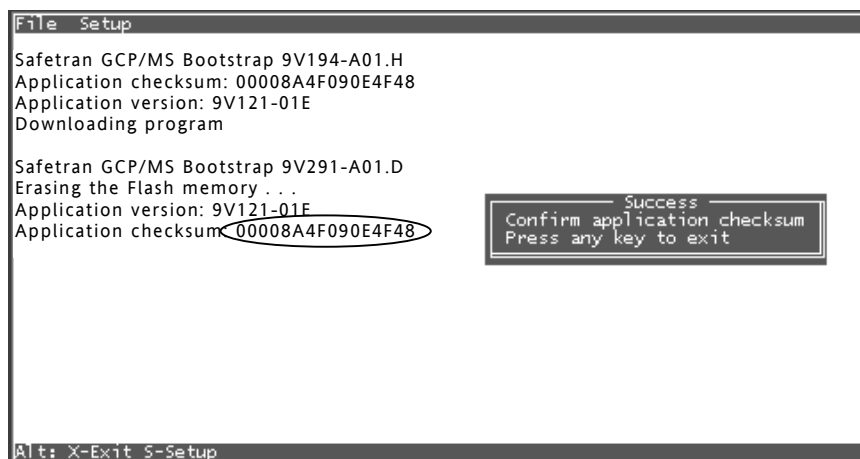
A setup program **Downloading** window appears in the Setup screen (see figure 9).



214f9.tif  
11-06-00

**Figure 9. Setup Program Download Window**

At completion of download, the **Success** window displays within the Setup screen (see figure 10).



214F10.tif  
11-06-00

**Figure 10. Setup Screen Success Window**

- Step 14      Verify that checksum displayed in Setup screen (circled on figure 10) is identical to checksum supplied with program disk.
- Step 15      This completes application software installation. Press any key on the PC keyboard to exit the installation program.
- Step 16      Remove the cable between personal computer serial port (COM1) and 80214 module 9-pin RS-232 connector.
- Step 17      Set the 3000 GCP case **POWER** switch to the **OFF** position.

Step 18 Set the 3000 GCP **POWER** switch to the **ON** position. Verify that the new software revision level (**9V121-01E**) appears momentarily on the GCP keypad display.

Step 19 BEFORE RETURNING THE 3000 GCP TO SERVICE, THE FOLLOWING MUST BE PERFORMED:

- Program the system to Set To Default in Function Menu.
- Reprogram all system application parameters (number of tracks, frequency, etc.) to the values recorded on the Application History Card.
- Recalibrate the system including Setup for Approach Length and Linearization.

Step 24 Verify proper crossing operation by observing train moves.

This concludes the update.