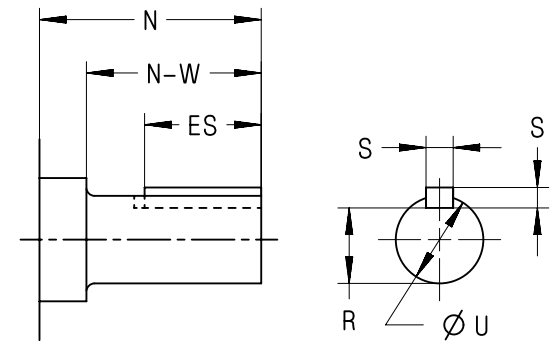
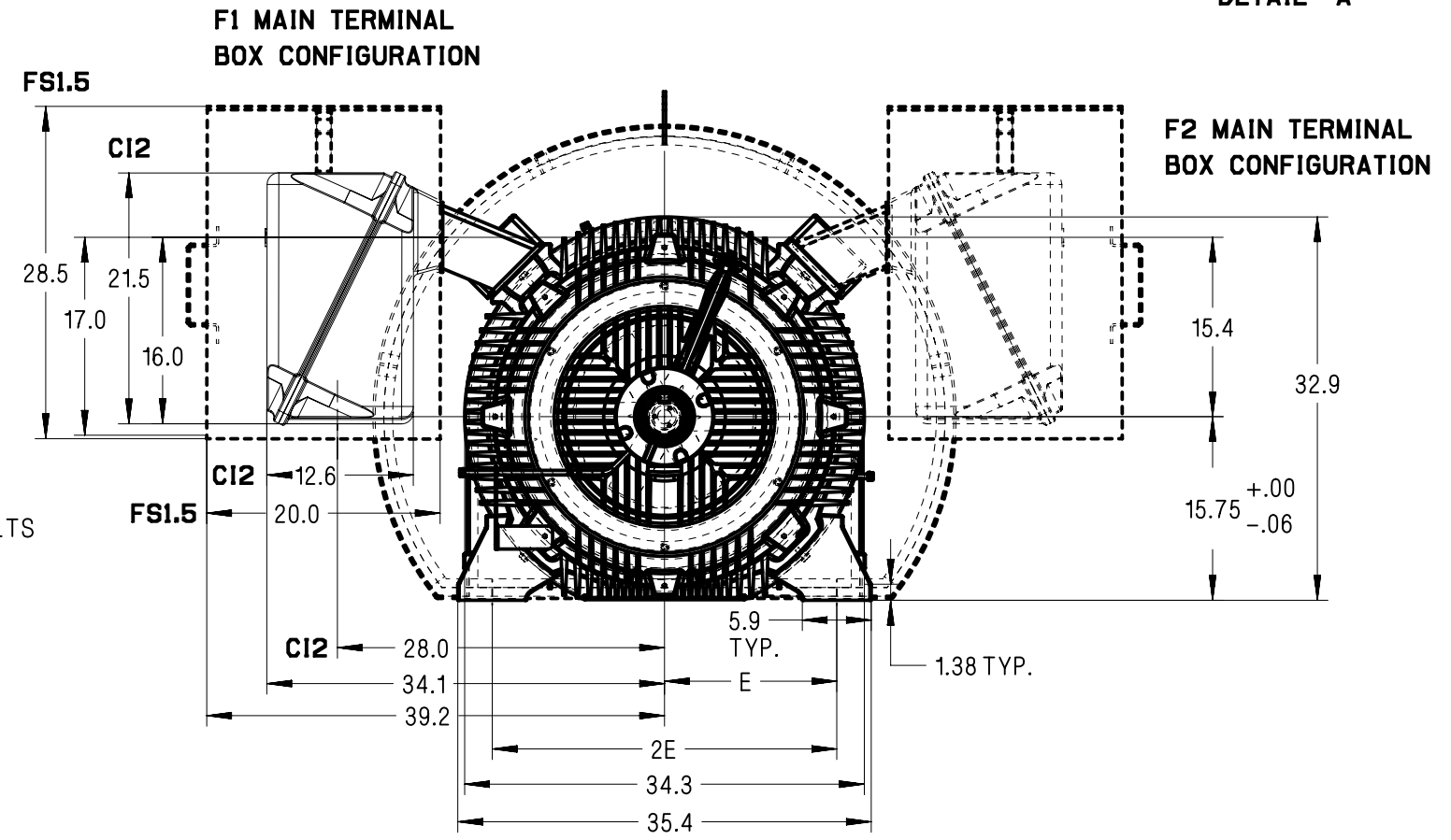


DETAIL "A"

1.35 X 1.62 SLOT FOR FOUNDATION BOLTS 4-HOLES TOTAL



DETAIL "A"



- Notes:**
- The main conduit box may be rotated in steps of 90°. A spacer is supplied for all rotatable conduit boxes. A removable bottom plate is supplied on the FS1.5 conduit box. A 5.0 N.P.T. is supplied on the CI2 conduit box.
 - C = Length of motor from drive end of shaft to end of standard fan housing.
 - C* = Length of motor from drive end of shaft to end of low noise fan housing.
 - V = (N-W)-0.25" = length of shaft available for coupling.
 - 2 Pole machines may rotate in one direction only.
 - Shims may be necessary under motor feet for direct connection.
 - 2 Pole machines are for direct connection. 4 Pole and slower machines may be either belt drive or direct connection depending upon the bearing installed in the motor.
 - Adding a ground brush increases BA and decreases N-W by: 4 Pole +: 1.03"

Frame	Speed	B	BA	C ₂	C ₃ *	E	2F	N	(N-W)	R	S	U	V	ES	Approx. Ship Wt. (Lbs)
SH400	2 Pole	51.97	10.00	83.9	104.33	14.76	44.1	7.67	6.75	2.880	0.875	3.375	6.50	5.0	7700
SH400	4 Pole +	51.97	10.00	84.9	105.33	14.76	44.1	8.31	8.00	3.944	1.000	4.500	7.75	6.5	8900

Certification: Customer _____ P.O. _____ S.O. _____ Item _____ TEFC_1LA3_SH400_2plusPL_AF_ROT
 HP _____ RPM _____ Frame _____ PH/HZ/Volts 3/_____/_____/ Terminal Box Size CI2 FS1.5 A5E47589662A REV AF
 Customer Tag # _____ By _____ Date _____ 10/02/20
 Comments _____
 Not for construction, installation or application purposes unless certified.