

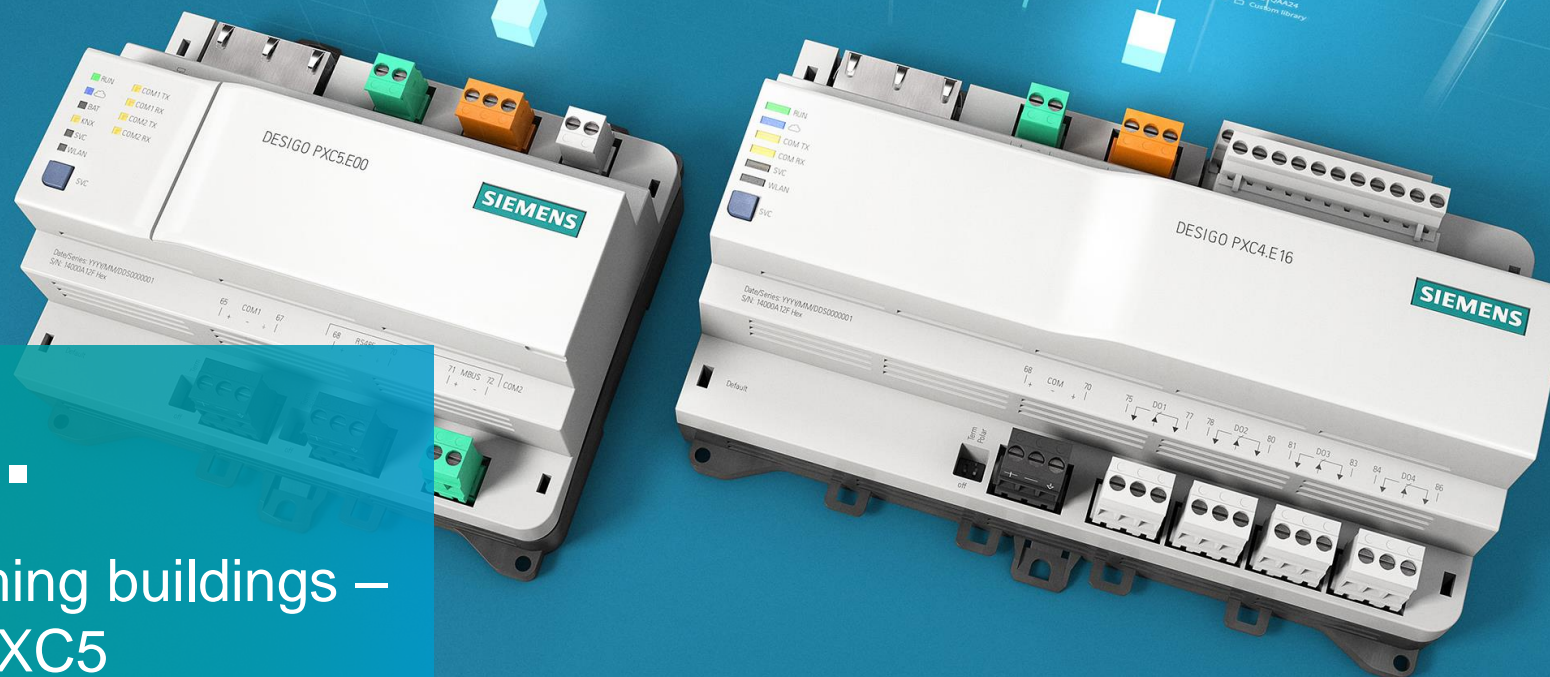
**SIEMENS**  
*Ingenuity for life*

# Your turn.

Control high-performing buildings –  
Desigo PXC4 and PXC5

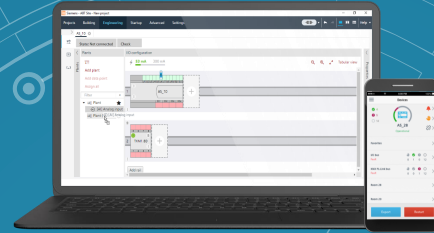
Unrestricted © Siemens 2020

[siemens.com/pxc-controllers](https://www.siemens.com/pxc-controllers)

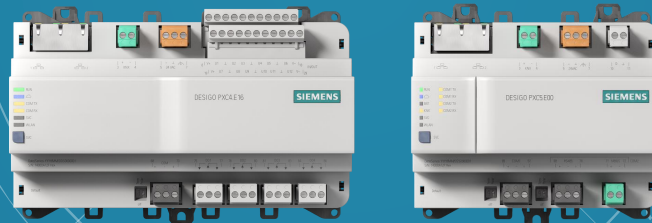


## Intuitive engineering

Get things done better, faster, easier and more reliably

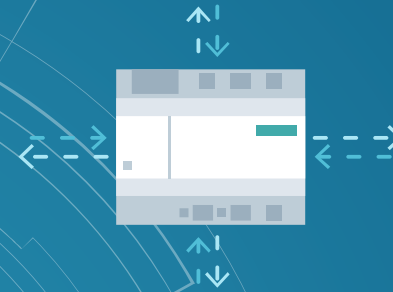


## Designo PXC



## Open by design

Open interfaces and seamless integration



## Security in mind

Built in features to enable security



## Easy access

Visualize your system any time from anywhere







# Intuitive engineering

Get things done better,  
faster, easier and more reliably.

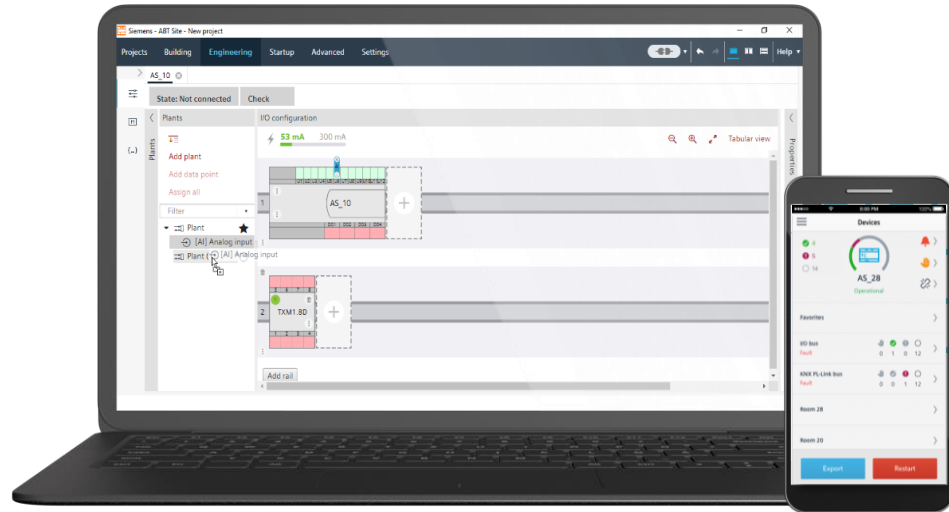


# Intuitive engineering

Engineering and commissioning for high-performing buildings

**SIEMENS**  
*Ingenuity for life*

## Desigo Engineering Framework



### ABT Site

Engineering and  
commissioning tool

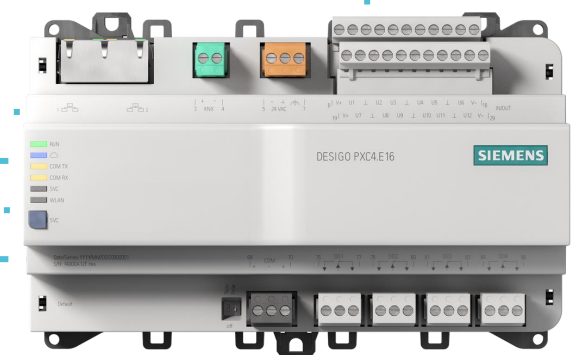
### ABT Go

Commissioning tool



### Desigo PXC5

For system functions  
and integration

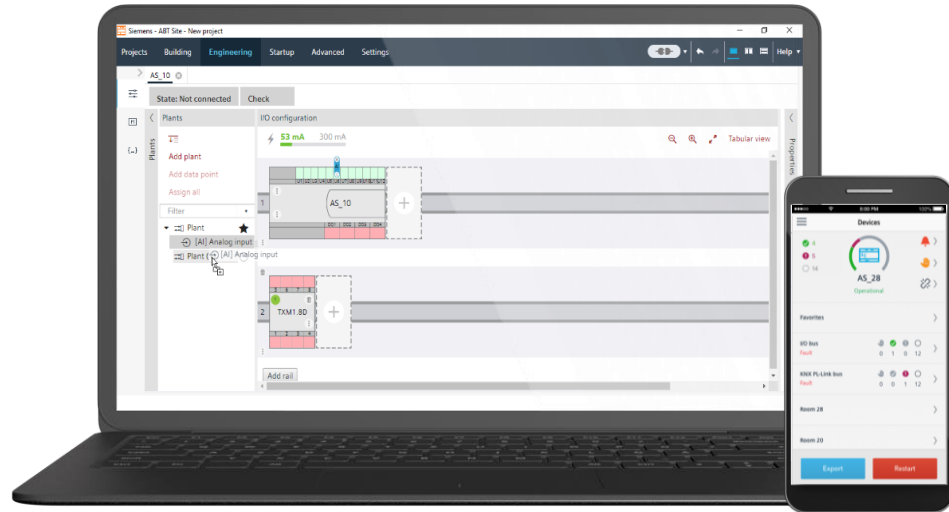


### Desigo PXC4

For HVAC plants

# Intuitive engineering

License free and openly available



**ABT Site**  
Engineering and  
commissioning tool

**ABT Go**  
Commissioning tool

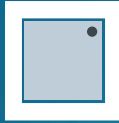
- **FREE**, no licenses
- Easy download
- Fast installation
- Get started in minutes
- Intuitive and workflow driven

# Intuitive engineering

Expanding your possibilities. One framework, many products

**SIEMENS**  
*Ingenuity for life*

Sensors



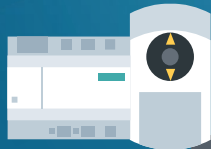
Modbus damper  
actuators



Intelligent  
valves



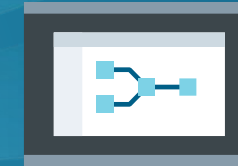
Actuating  
controllers



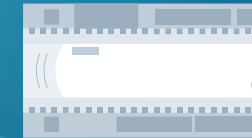
Automation  
controller



Embedded  
building  
management



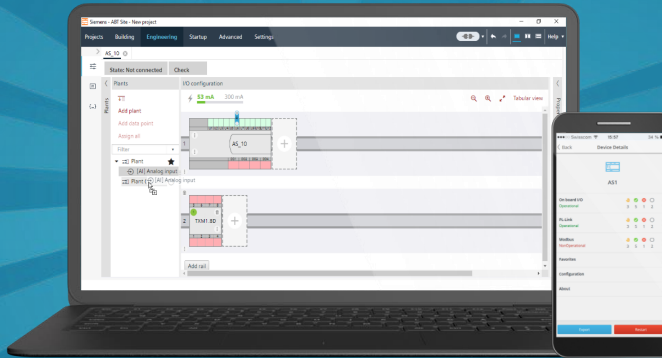
Room automation  
stations



More to come

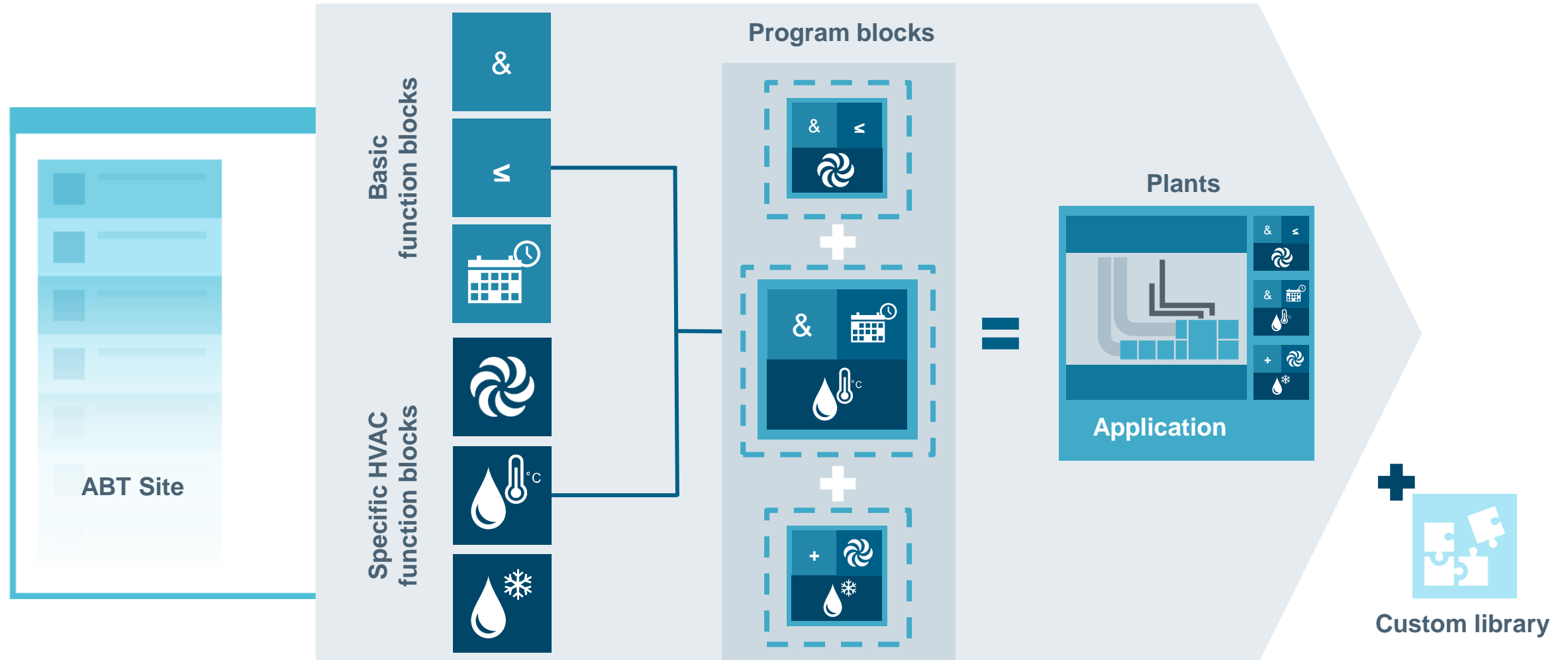
...

## Desigo Engineering Framework



# Intuitive engineering

Simplified programming to highly reduce engineering complexity



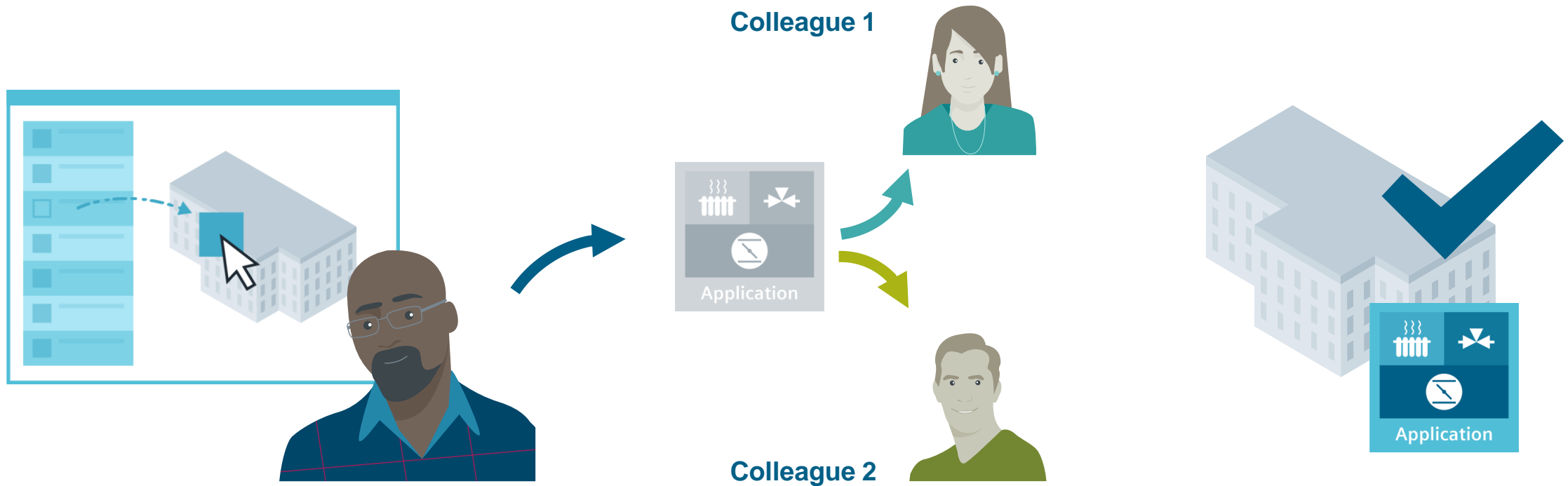
# Intuitive engineering

Build, share and deploy your application

**Build**

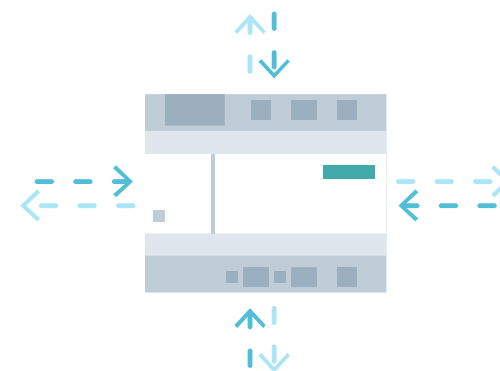
**Share**

**Deploy**



**Enabling you to create and manage your own library, for your organization**



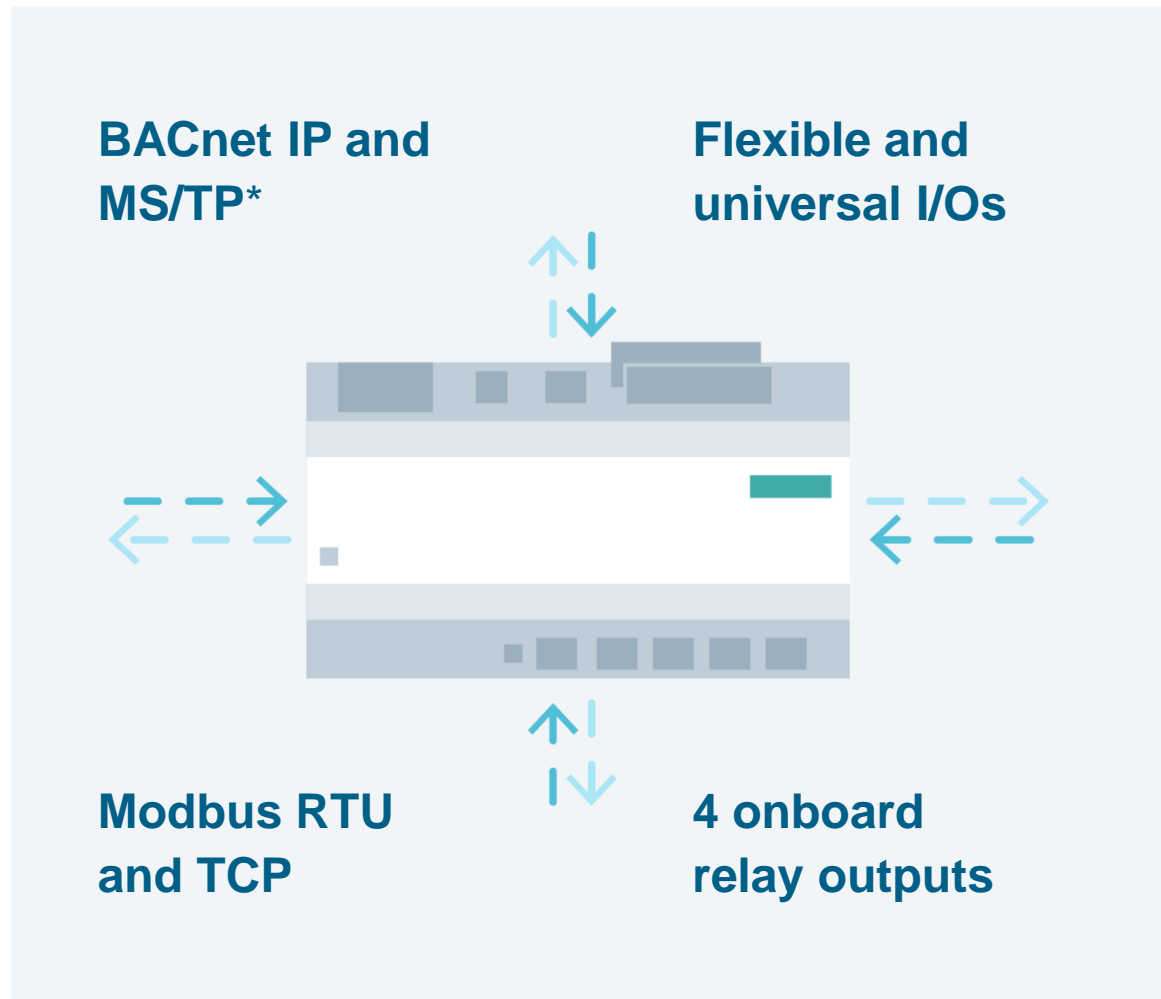


# Open by design

Open interfaces and seamless integration, free programmable and compact controllers

## Open by design

Open, compact, all in one design



## Open by design means

Integrating different protocols with no need for additional hardware or software, in a consistent and harmonized workflow

## Open by design

Integrating multiple protocol is easy

**Import devices**  
(BACnet, Modbus\*)



**Add Functions**



**Complete Applications**



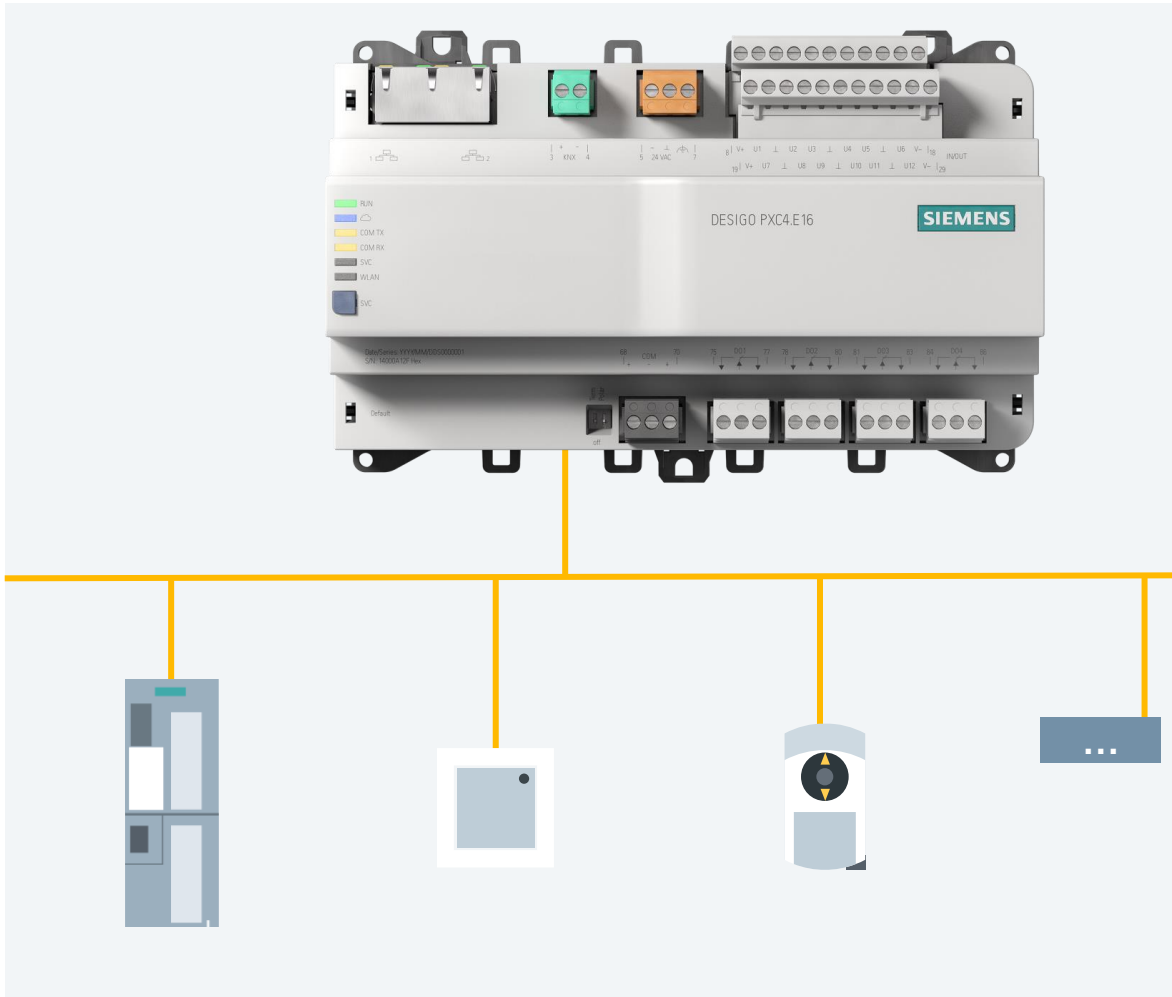
## Consistent engineering

Allows integration and mixing of different protocol, without extra effort.

- ☒ No licences needed
- ☒ One framework with one workflow
- ☒ Creating full function
- ☒ Fast, simple = saving engineering hours

# Open by design

## An example of Modbus integration



- ✓ Enhanced functionality
- ✓ Decreases wire cluttering
- ✓ Simplifies installation and engineering
- ✓ Identical workflow and engineering for BACnet and Modbus\*, reducing training needs

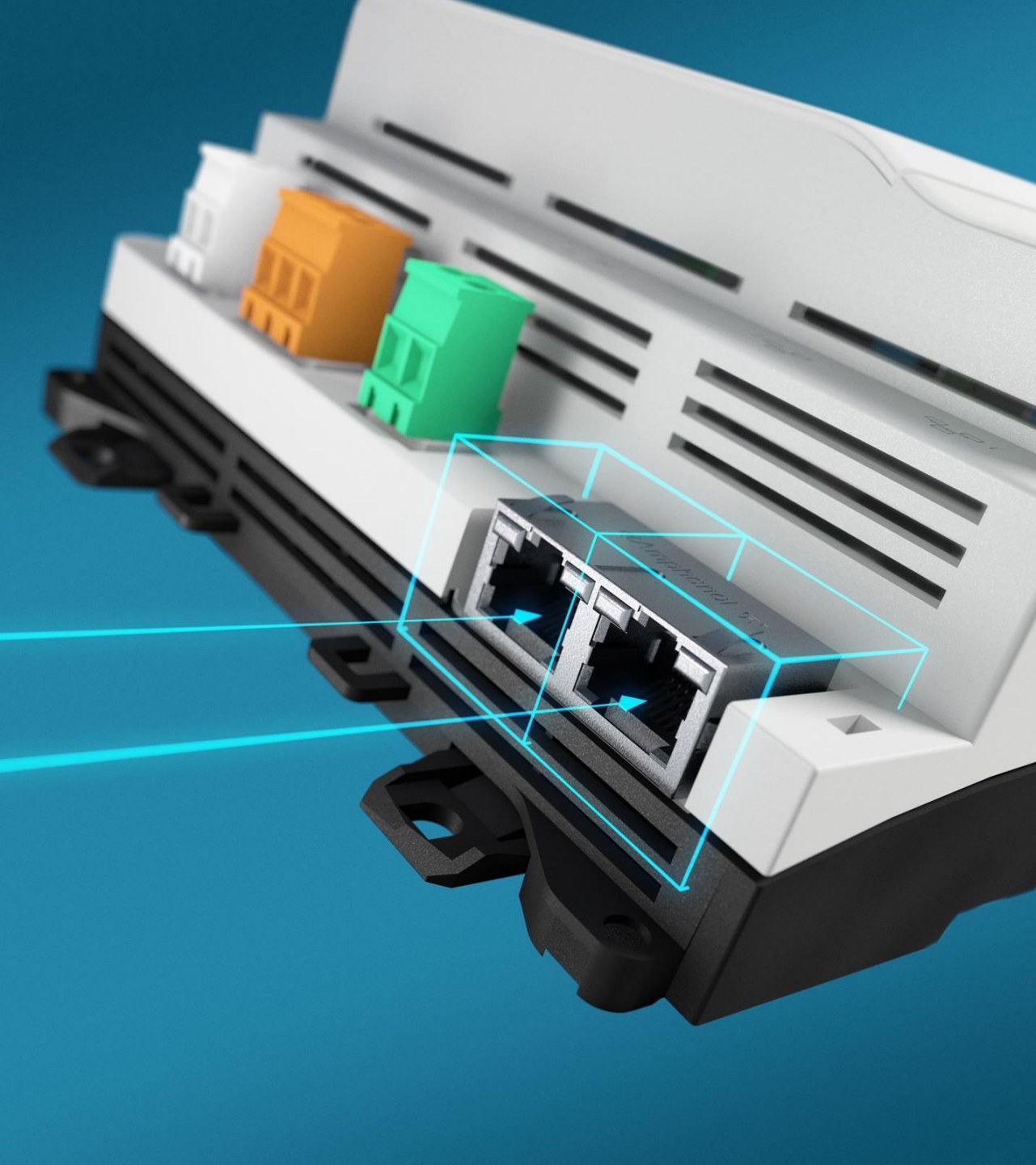
\* Ready for expansion of KNX, and M-Bus





# Easy access

Visualize your system.  
Anytime, from anywhere

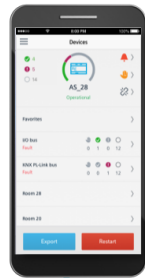


## Easy access

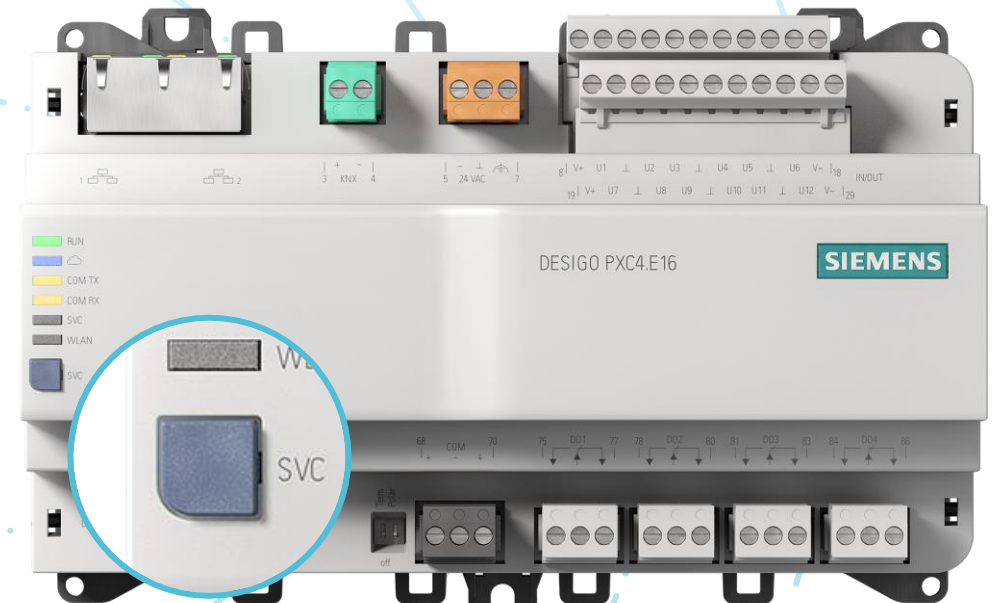
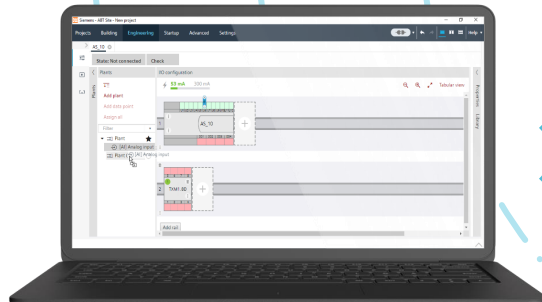
Wireless access for engineering and commissioning

**SIEMENS**  
*Ingenuity for life*

**ABT Go**

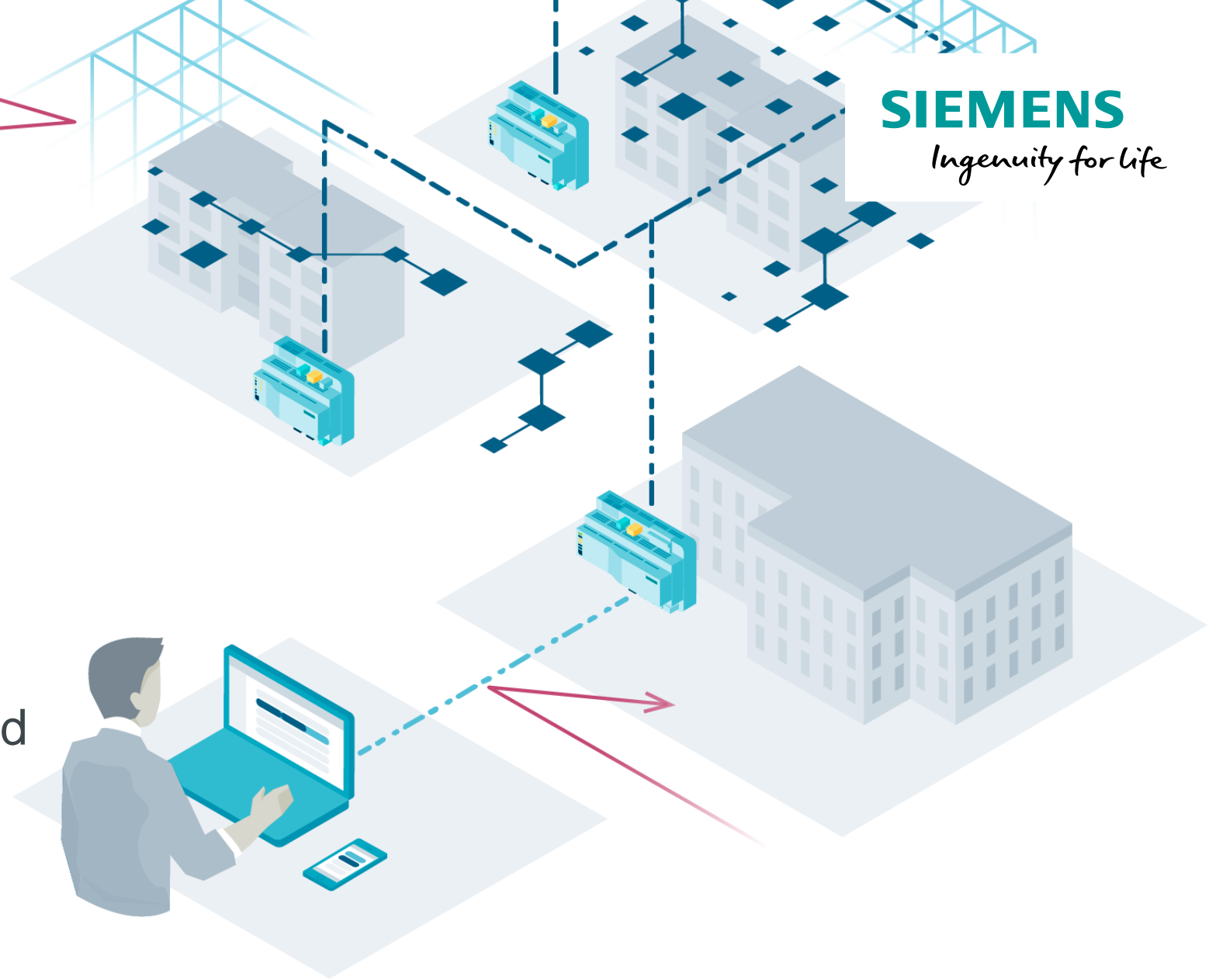


**ABT Site**



# Remote engineering, operation and monitoring

Access your system.  
Anytime, from anywhere  
thanks to an integrated cloud  
connectivity and onboard  
web interface



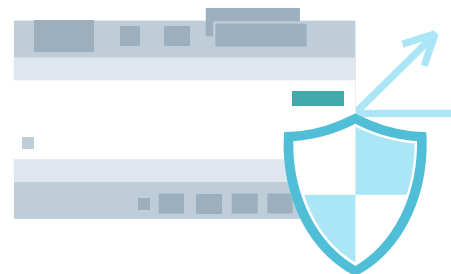
# Easy access

## Onboard web interface



- Always available web interface
- Basic operation and monitoring tasks can be done by accessing the onboard web interface, simplifying commissioning and maintenance tasks
- Remotely accessing the web interface is possible via secure cloud connection
- Alarm handling to find and remove faults

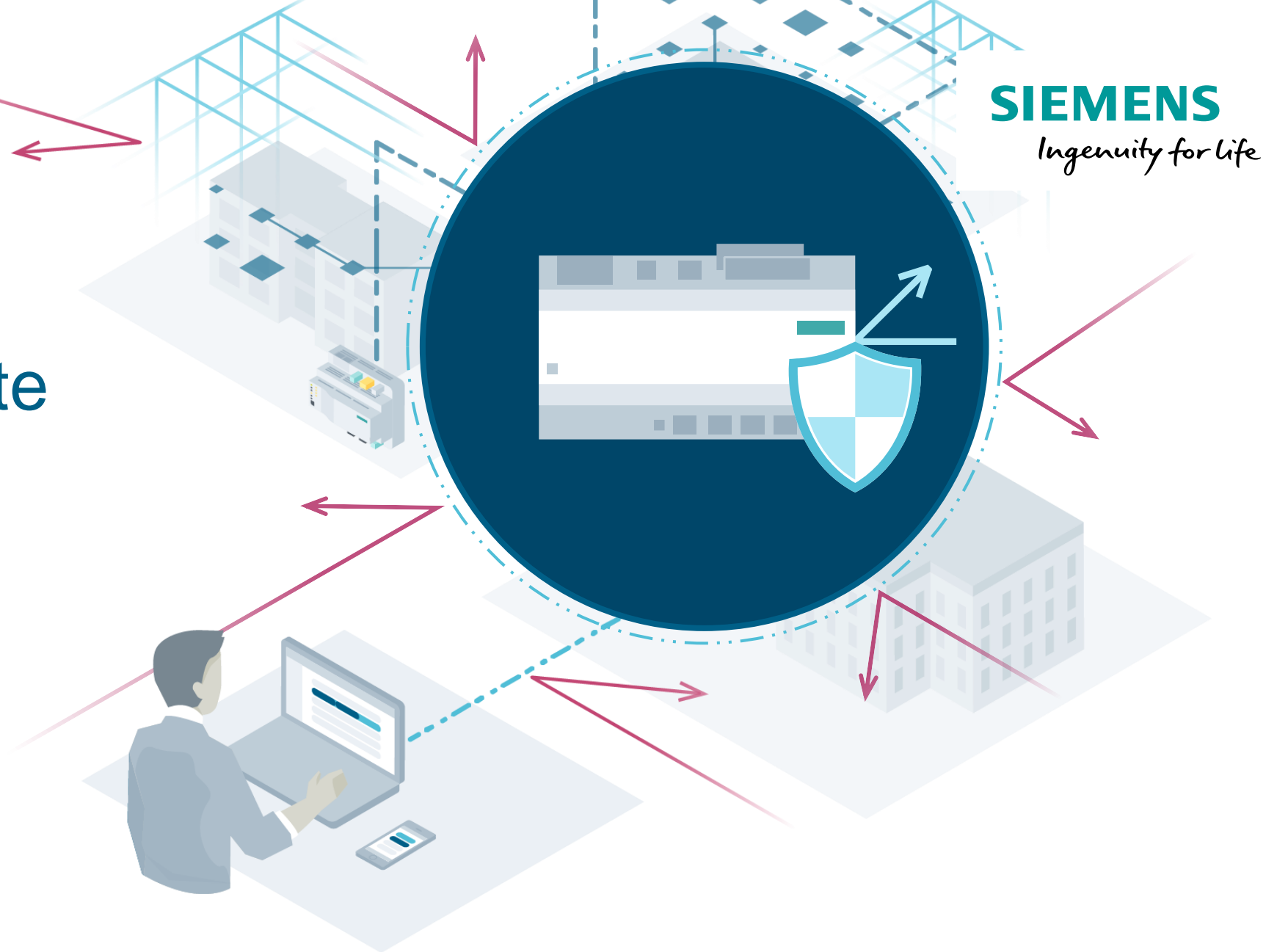




# Security in mind

Built-in features to enable security,  
now and in the future.

Increased  
on- and off-site  
connectivity  
requires  
secure  
connectivity



# Security in mind

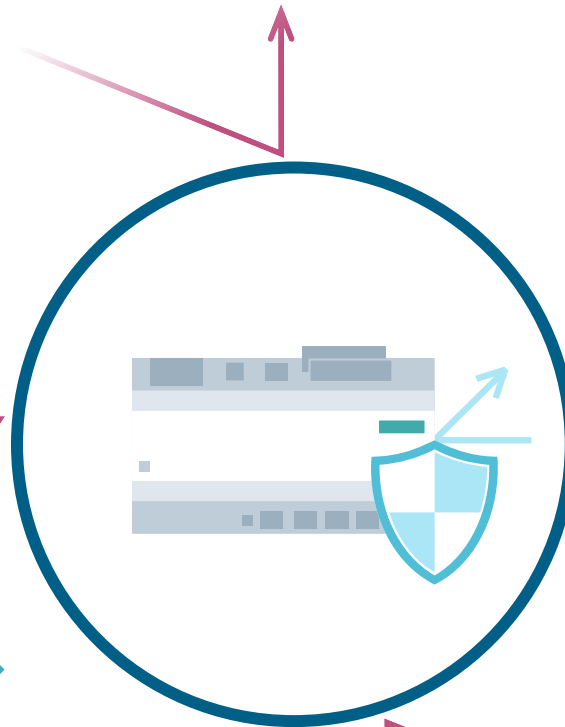
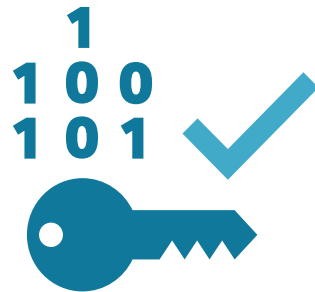
PXC4 and PXC5 has been designed with security in mind



- Certificate handling
- Signed firmware



- Communication with embedded server is encrypted via https
- Prepared for BACnet Secure Connect



- All products undergo penetration tests before release
- System hardening guidelines for installation provided



- Password protection
- Disabling of Hotspot

# Security in mind

## Securely connect multiple sites



- Remote access for ABT Site
- Remote web access via web portal and web interface



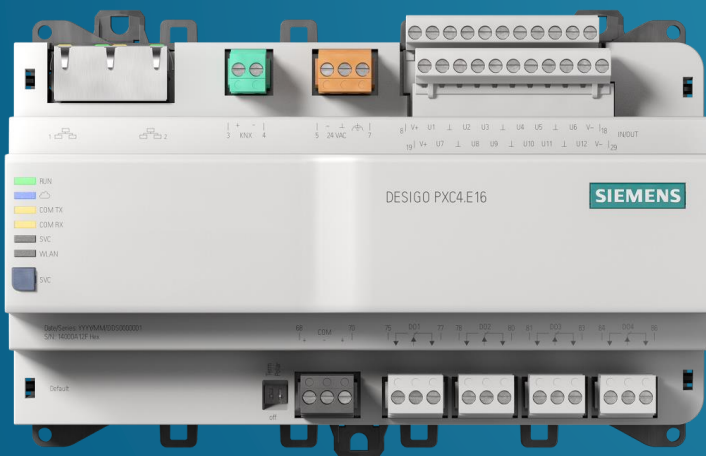
Only the beginning – starting of a journey

**SIEMENS**  
*Ingenuity for life*



## Desigo PXC5

For system functions and integration



## Desigo PXC4

For HVAC plants

... there  
is more  
to come.

**SIEMENS**  
*Ingenuity for life*

Now it's  
your turn.

