



| RailXplore Dive



With RailXplore Dive, rail infrastructure operators can quickly obtain an overview of the rail infrastructure state across the entire rail network.

RailXplore Dive (Data Insights and Visualization Explorer)

Product Description

Rail infrastructure operators need to ensure maximum availability of their rail infrastructure for smooth operation.

RailXplore Dive application

- ✓ Analysis of large amounts of data and long-time archiving
- ✓ Daily/hourly updated data from different sources
- ✓ Predefined reports
- ✓ User-defined BI



RailXplore Dive supports the maintenance and systematic troubleshooting of railway infrastructure with comprehensive visualizations for making the right decisions.

The elements of the solution:



Frontend

- Web access
- Mobile devices



Edge platform

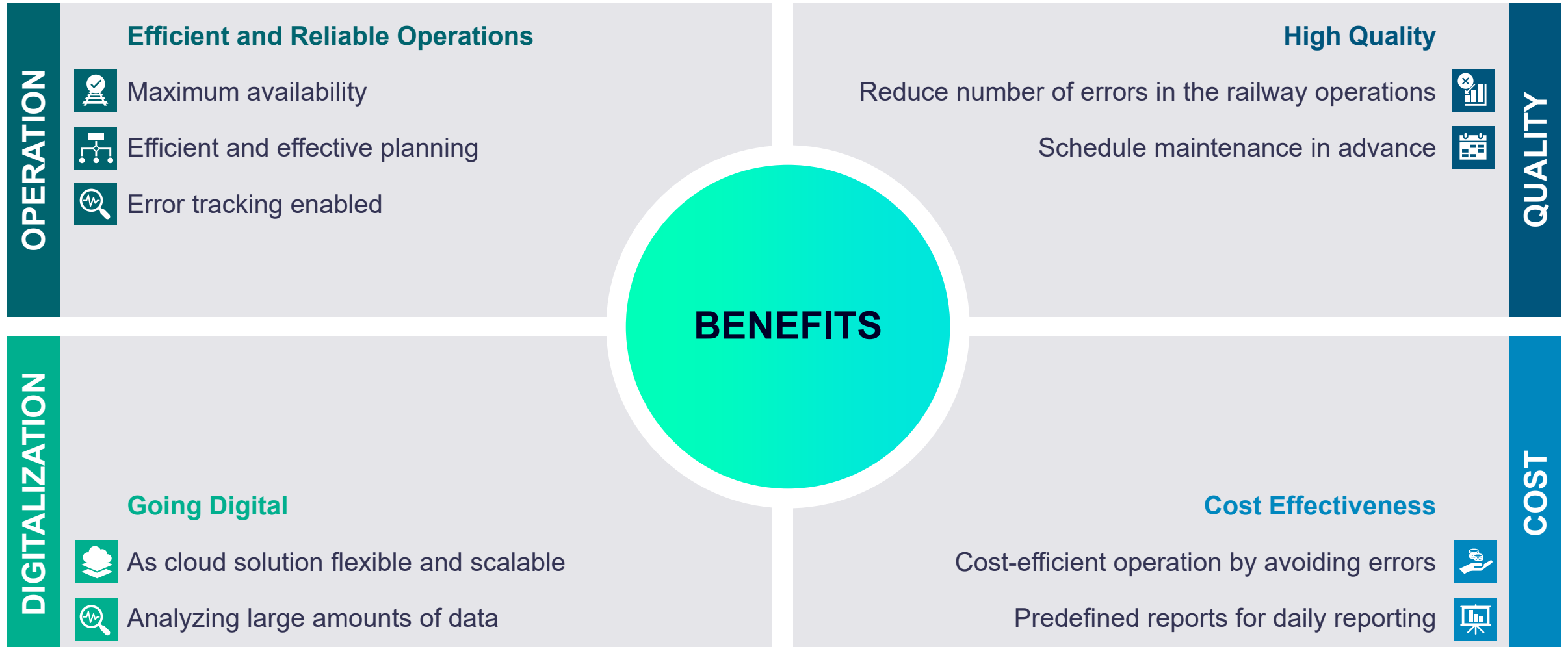
- Data collection and consolidation



Data acquisition

- Collection of data from different sources

Benefits of RailXplore Dive



Key Functionalities

Reports

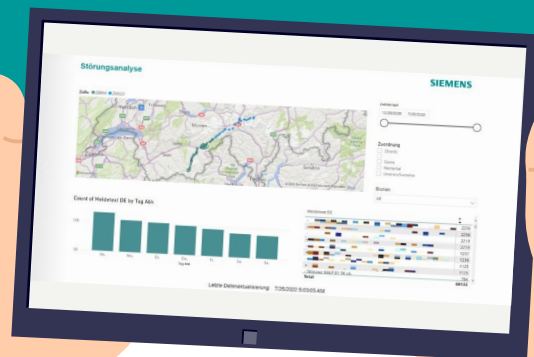
- Easy identification of problem areas via map view
- View disruption details per station
- Detail view about disruptions

Visualization

- Flexible visualization
- Predefined reports
- Drill-Down capability
- User-defined reports
- Map view for easily finding core problem areas

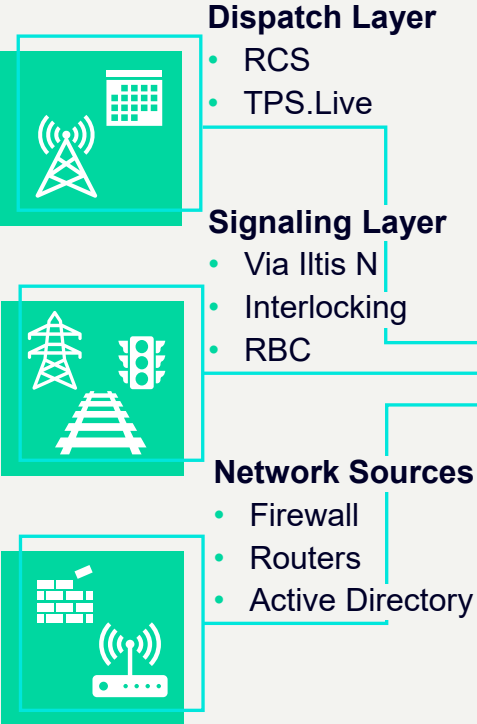
Analysis

- Analysis of large amounts of data and presentation as comprehensible visualizations
- Support for planning and execution of maintenance work
- Systematic fault detection

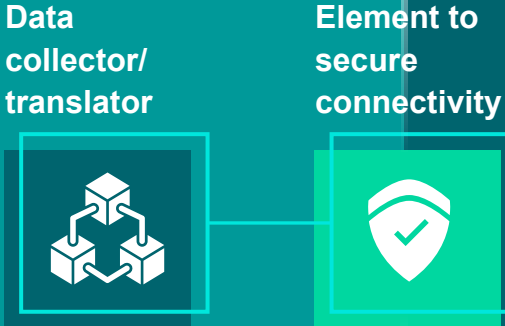


System Architecture

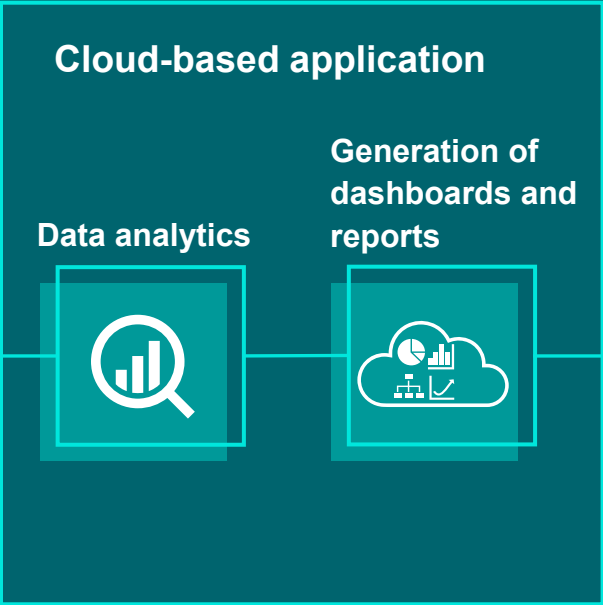
➤ Data sources



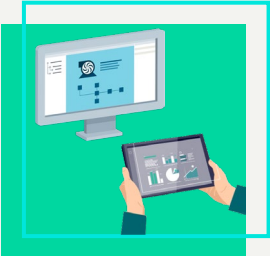
➤ System connectivity



➤ Data processing



➤ Output front end



References



PoC Rhätische Bahn

Switzerland

Rhätische Bahn (RhB), operator of one of the largest narrow-gauge rail networks in Switzerland.



| Contact

Andrea Hofmann

Product Lifecycle Manager

SMO RI ML GPO-TMS CH
Hammerweg 1
8304 Wallisellen
Switzerland

Mobile: +41 79 5143558

E-Mail: andrea-hofmann@siemens.com

Disclaimer

© Siemens 2022

Subject to changes and errors. The information given in this document only contains general descriptions and/or performance features which may not always specifically reflect those described, or which may undergo modification in the course of further development of the products. The requested performance features are binding only when they are expressly agreed upon in the concluded contract.

All product designations may be trademarks or other rights of Siemens AG, its affiliated companies or other companies whose use by third parties for their own purposes could violate the rights of the respective owner.