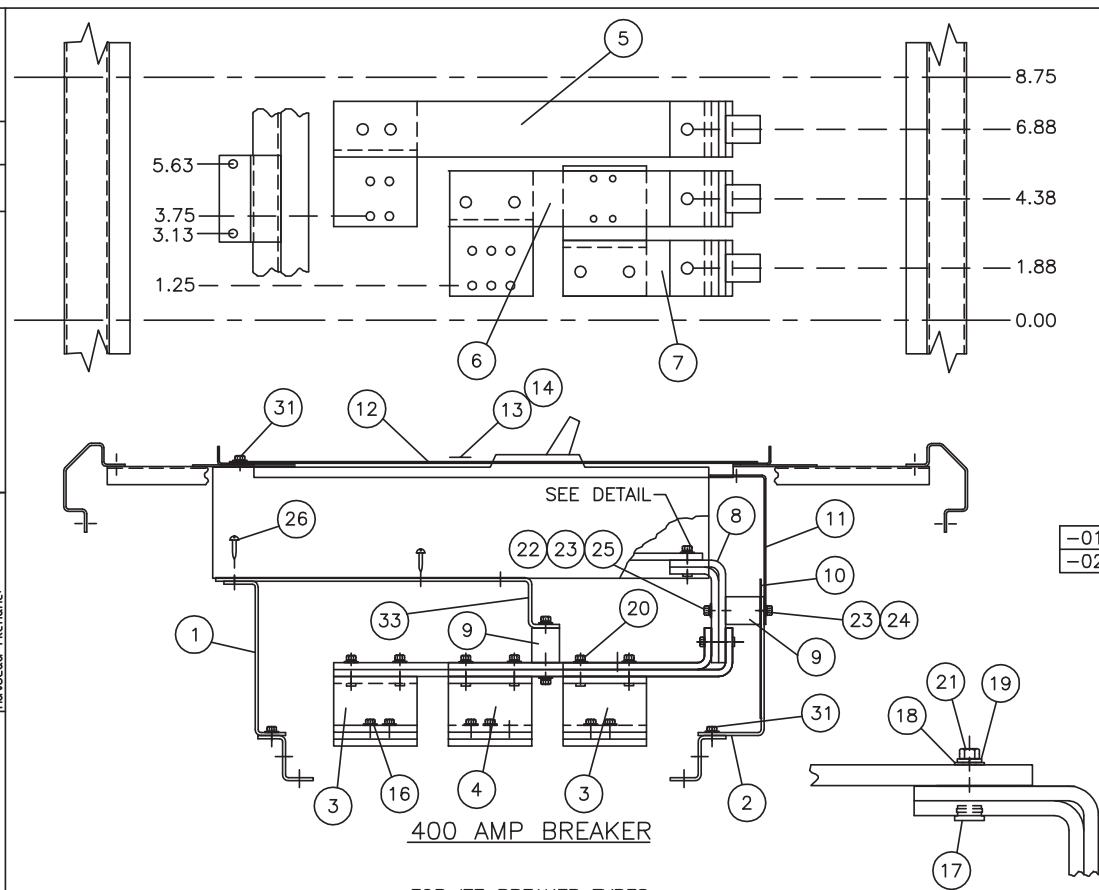


Dwg. No. 12-5719  
 Rev. 10  
 Sht 1  
 Third Angle Projection  
 Autocad Filename



-01 CAT# 6CLJ1  
 -02 CAT# SCJD

-02	-01	ITEM	PC. NO.	DESCRIPTION
1	1	1	16-6114-01	MOUNTING BRACKET
1	1	2	16-6120-02	SUPPORT BRACKET
2	2	3	17-6768-02	ØAC JITNEY
1	1	4	17-6769-02	ØB JITNEY
1	1	5	12-6776-06	ØAC LONG CONNECTOR
1	1	6	12-6776-05	ØB CONNECTOR
1	1	7	12-6776-04	ØAC SHORT CONNECTOR
3	3	8	17-6770-02	PAD CONNECTOR
4	4	9	11-1800-02	1-1/4" INSULATOR
1	1	10	11-7721-01	BARRIER
1	1	11	11-6415-02	BARRIER
1	1	12	12-6194-02	COVER PLATE
1	1	13	11-7505-01	CIRCUIT I.D. CARD
1	1	14	11-7506-01	CARD HOLDER
		15		
2	2	16	11-B-2022-05	STRAP-BUS HARDWARE KIT
12	12	17	11-1620-04	5/12-18 INSERT
12	12	18	11-1615-06	5/16" FLAT WASHER
12	12	19	11-1618-04	5/16" LOCK WASHER
6	6	20	11-1566-05	5/16-18 X 1" HHMS
6	6	21	11-1566-07	5/16-16 X 1-1/4" HHMS
6	6	22	11-1615-04	1/4" FLAT WASHER
8	8	23	11-1618-03	1/4" LOCK WASHER
4	4	24	11-1546-02	1/4-20 X 1/2" HHMS
4	4	25	11-1546-05	1/4-20 X 7/8" HHMS
4	4	26	11-1542-14	1/4-20 X 2-3/4" SRHMS
-	1	27	12-B-2105-04	NEUTRAL LUG ASSEMBLY
1	-	28	12-B-2105-06	NEUTRAL LUG ASSEMBLY
		29		
		30		
6	6	31	11-1553-02	1/4-20 X 3/8" SHWSW
1	1	32	12-5531-11	FILLER PLATE ASSEMBLY
1	1	33	16-6115-01	AUXILIARY MOUNTING BRACKET
1	-	34	31-1225-01	INSTRUCTION SHEET
1	1	35	15-A-1027-01	CARTON LABEL
1	1	36	48001057 ▲	CARTON
-	1	37	11-5570-02	SERIES 5 CONVERSION KIT
-	1	38	31-1187-01	INSTRUCTION SHEET
		39		
		40		

PC. -01 ASSY. USED ON  
 STRAP KIT 6CLJ1  
 PC. -02 ASSY. USED ON  
 STRAP KIT SCJD

FOR ITE BREAKER TYPES:  
 CLJ, CJD6

**TORQUE VALUES:**  
 (16)- 72 IN/LBS.  
 (29)- 20 FT/LBS.  
 (20)(21)- 12 FT/LBS.

**⚠ DANGER**

Hazardous voltage.  
Will cause death or serious injury.

Keep out.  
Qualified personnel only.  
Disconnect and lock off all power before working on this equipment.

10	IC-831B	7-31-06
9	IC-831A	04-12-04
8	1B-908	5-8-95
7	1B-359	11-11-92
6	1A-939	7-22-91
5	1A-280	11-30-90
4	1A-077	6-08-89
3	1A-066	2-16-89
2	8A-093	7-15-88
1	8A-071	
0	8A-001	3-30-87

Unless otherwise specified dimensions are in inches  
 Tolerances are non-cumulative and are as follows unless specified otherwise.  
 .XX ± .030  
 .XXX ± .015  
 Angular ± 2°  
 Do not scale drawing  
 Dwn TWT Date 3-30-87  
 Chk JRM Date 9-5-91  
 Apvd SH Date 9-13-91

Confidential - Property of  
**Siemens Industry, Inc.**  
Building Technologies Division

CJD FRAME MOUNT  
SERIES 6 - BRANCH

Dwg. No. 12-5719 Rev. 10

Scale NONE Sheet 1 of 1

FOR USE WITH CJD6 FRAME BREAKERS MOUNTED  
 IN SPP/FPP/S5/F2/P5 PANELBOARDS (DEEP BOX).