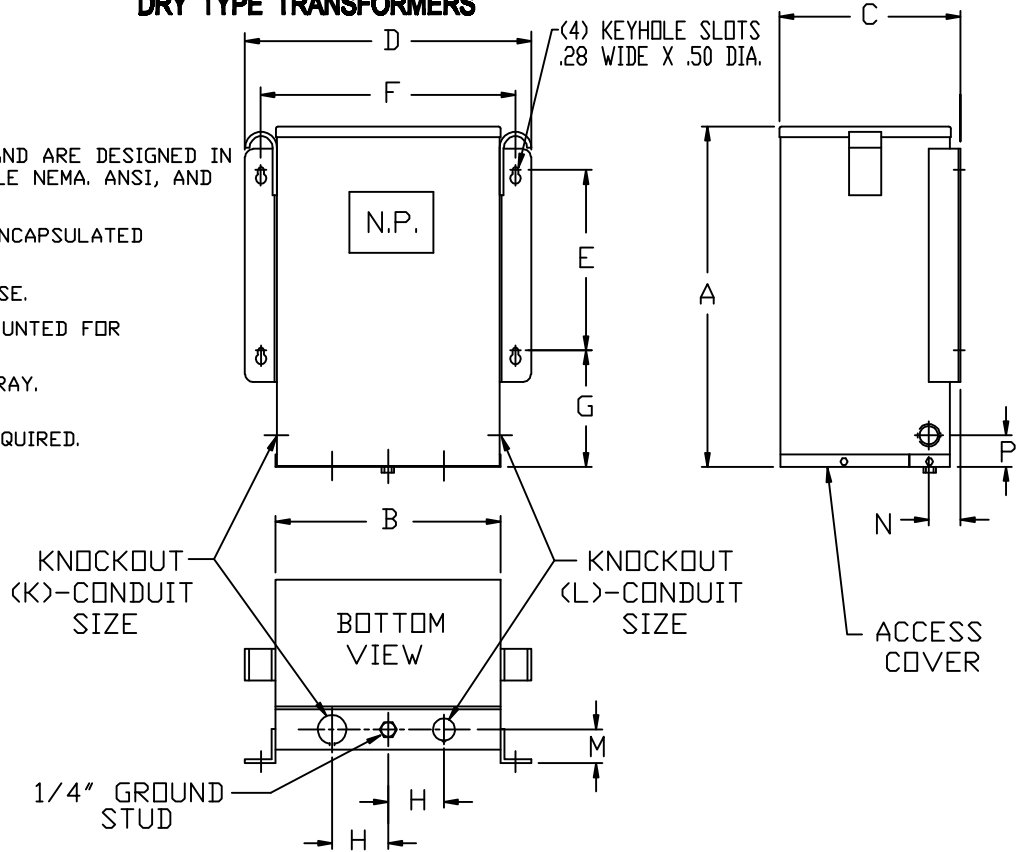


# SIEMENS

## DRY TYPE TRANSFORMERS

**NOTES:**

1. ALL UNITS ARE UL LISTED AND ARE DESIGNED IN ACCORDANCE WITH APPLICABLE NEMA, ANSI, AND IEEE STANDARDS.
2. THESE TRANSFORMERS ARE ENCAPSULATED CONSTRUCTION.
3. TRANSFORMERS ARE 135°C RISE.
4. TRANSFORMERS ARE WALL MOUNTED FOR INDOOR / OUTDOOR USE.
5. PAINT COLOR IS ANSI #61 GRAY.
6. MOUNTING HOLES LOCATIONS. 1/4" MOUNTING HARDWARE REQUIRED.



KVA	DIMENSIONS IN INCHES													NET WT. LBS. ALUM. UNITS	NET WT. LBS. COPPER UNITS
	A	B	C	D	E	F	G	H	K	L	M	N	P		
7.5	16.12	10.62	8.55	13.50	8.25	12.00	5.50	3.00	3/4"	1/2"	1.50	1.50	1.50	100	107
10	16.12	10.62	8.55	13.50	8.25	12.00	5.50	3.00	3/4"	1/2"	1.50	1.50	1.50	135	157
15	21.12	13.67	10.06	16.50	12.50	15.00	6.25	3.50	1"	3/4"	2.00	2.00	1.75	200	208
25	21.12	13.67	10.06	16.50	12.50	15.00	6.25	3.50	1"	3/4"	2.00	2.00	1.75	275	327

KVA	DIMENSIONS IN CENTIMETERS													NET WT. LBS. ALUM. UNITS	NET WT. LBS. COPPER UNITS
	A	B	C	D	E	F	G	H	K	L	M	N	P		
7.5	40.9	27.0	21.7	34.3	21.0	34.5	14.0	7.6	1.9	1.3	3.81	3.81	3.81	100	107
10	40.9	27.0	21.7	34.3	21.0	34.5	14.0	7.6	1.9	1.3	3.81	3.81	3.81	135	157
15	53.6	34.7	25.6	41.9	31.8	38.1	15.9	8.9	2.5	1.9	5.08	5.08	4.45	200	208
25	53.6	34.7	25.6	41.9	31.8	38.1	15.9	8.9	2.5	1.9	5.08	5.08	4.45	275	327

KVA	QTY.	CATALOG NO.	VOLTAGE		TAPS	DRAWING
			PRIMARY	SECONDARY		
						<input type="checkbox"/> APPROVAL
						<input type="checkbox"/> RECORD
						<input type="checkbox"/> OTHER

CUST.	DWN. BY:	Siemens Industry, Inc.
	DATE:	
JOB	CHK. BY:	GENERAL PURPOSE TRANSFORMERS SINGLE-PHASE, 600 VOLTS CLASS, 60 HZ.
P.O.	DATE:	
TIE	APVD. BY:	DWG. NO. J-7
S.O.	DATE:	
		REV. F DATE 06/22/10