

SIMATIC PCS neo



Jens Norling Mathiassen



SIMATIC PCS neo V3.1



Totally Web-based Process Control System

The screenshot displays the SIMATIC PCS neo V3.1 web-based interface. The main window shows a process control system configuration for a 'Separation' unit. The interface includes a navigation menu on the left, a central area for process control, and a right-hand panel for 'Instance data' and 'Block type data'. The 'Instance data' panel shows the following information:

Property	Value
Name	YC0001_V
Type	VM
Program block	FBEM
Enable watchdog	<input checked="" type="checkbox"/>
Task	default
Additional link	Wave Router

The 'Block type data' panel shows the following information:

Property	Value
Value	Large
Version	1.0
Block ready	Drawn
Author	And.B&B
Created on	05/10/09 13:50:30
Changed on	05/10/09 13:50:30
Changed by	And.B&B

The bottom of the interface shows a table with columns for Name, Value, Type, Inlet, Set, Out, Forcing, Forcing, Point, Comment, and Type comment.

The screenshot displays the SIMATIC PCS neo V3.1 web-based interface showing a detailed process control diagram for a 'Separation' unit. The diagram includes a central vertical column representing the separation unit, with various control elements, valves, and sensors connected to it. The interface includes a navigation menu on the left, a central area for process control, and a right-hand panel for 'Instance data' and 'Block type data'. The 'Instance data' panel shows the following information:

Property	Value
Name	YC0001_V
Type	VM
Program block	FBEM
Enable watchdog	<input checked="" type="checkbox"/>
Task	default
Additional link	Wave Router

The 'Block type data' panel shows the following information:

Property	Value
Value	Large
Version	1.0
Block ready	Drawn
Author	And.B&B
Created on	05/10/09 13:50:30
Changed on	05/10/09 13:50:30
Changed by	And.B&B

The bottom of the interface shows a table with columns for Name, Value, Type, Inlet, Set, Out, Forcing, Forcing, Point, Comment, and Type comment.

SIMATIC PCS neo v3.1

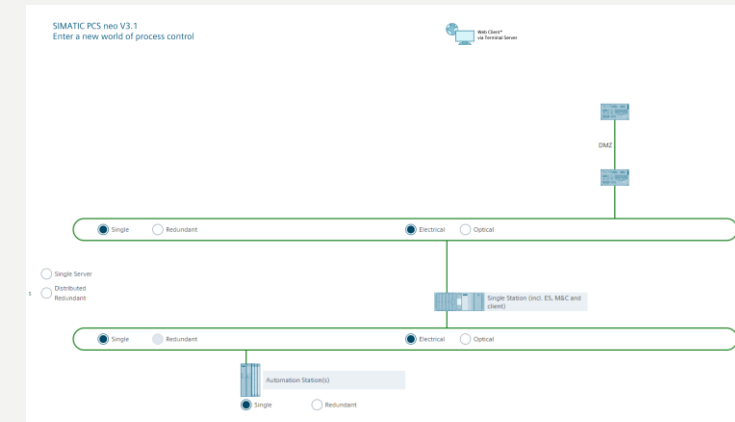
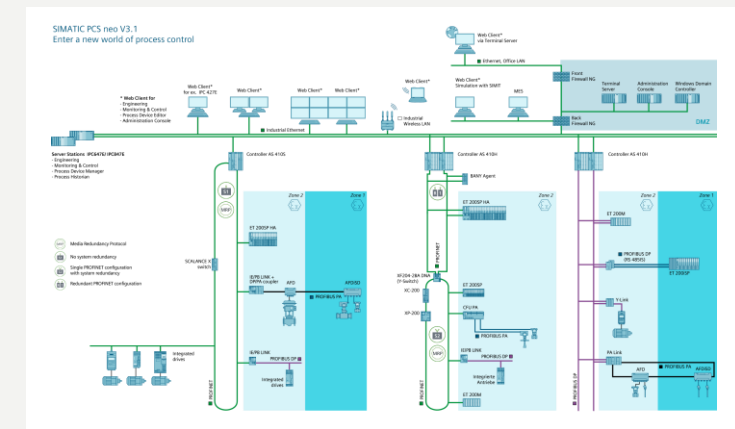
Improved Scalability

System boundaries

	V3.0	V3.0 SP1	V3.1
Number of POs per project	4,000	6,000	32,000
Number of M&C server (single/redundant)	4/2	4/2	4/4
Number of POs per M&C server	2,000	3,000	8,000
Number of controllers (single/redundant) per M&C server	8/4	8/4	8/4
Number of POs per controller	1,000	1,500	2,000
Number of process value changed per second per M&C server	2,000	3,000	8,000

Small Single Station solution

- One IPC Host with 2 virtual stations
- Single Station and Domain Controller virtualized with HyperV
- UI via local browser on Single Station

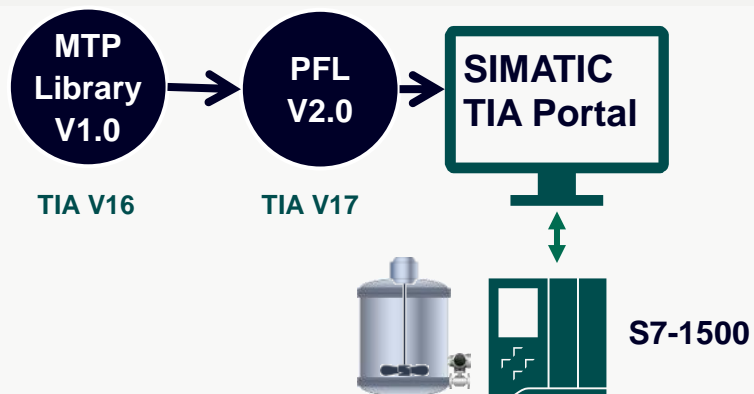


SIMATIC PCS neo v3.1 is MTP ready

(Module type Package)



Module Automation Engineering



Unit Layer

Plug & Produce with MTP – enabled by modular automation and plant orchestration with SIMATIC PCS neo.

Visualization & Orchestration



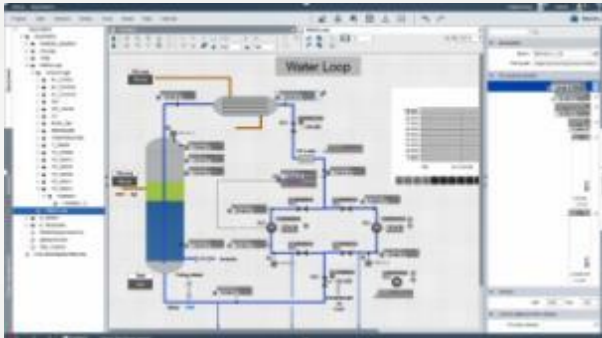
- 4 Operate
- 3 Download
- 2 Address set up
- 1 MTP import

*Process Orchestration Layer

Module Type Package (MTP)



SIMATIC PCS neo V3.1 is first choice for all continuous processes



➤ **ReThink**
Every opportunity is considered neo!

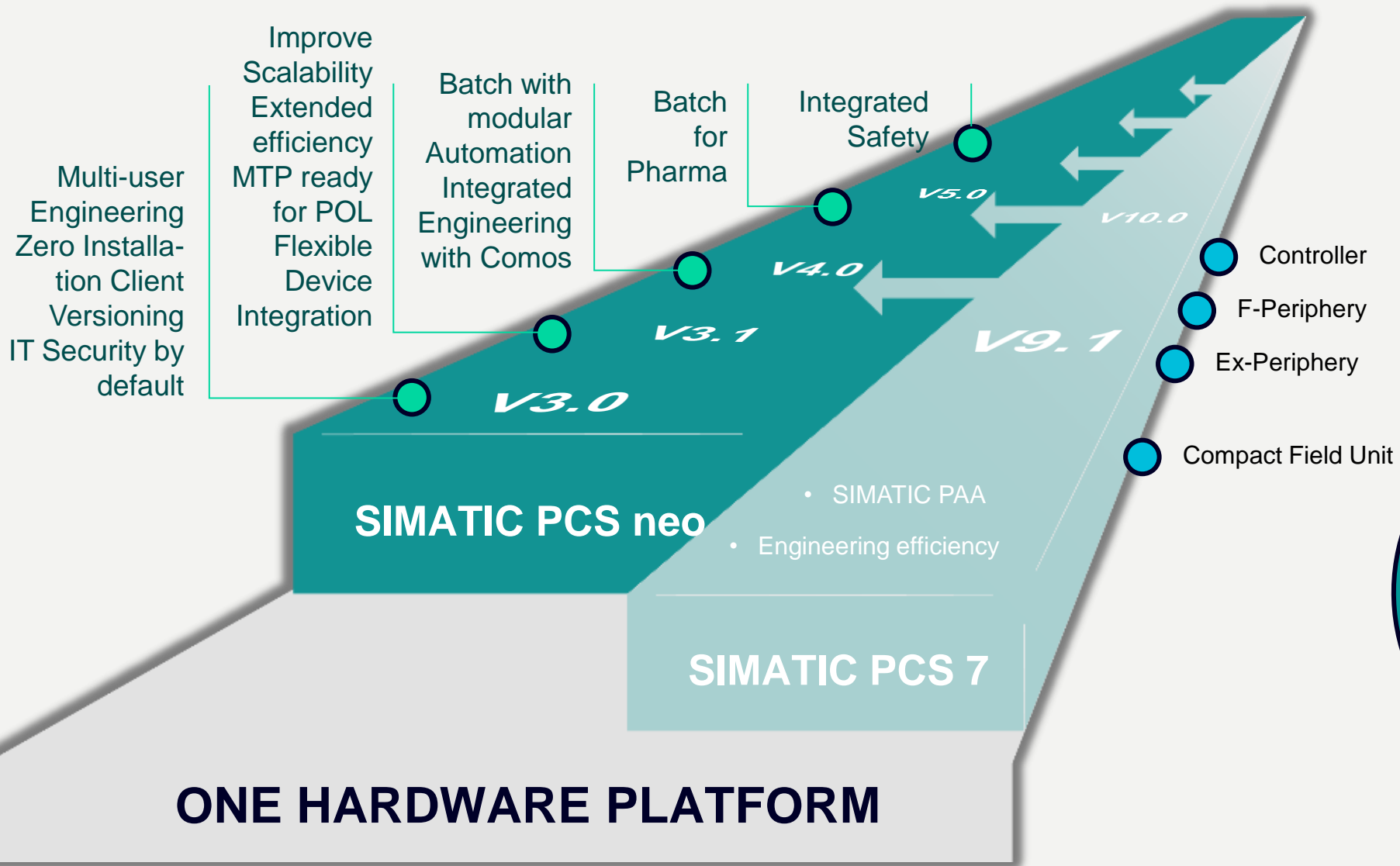
SIMATIC PCS neo

- Continuous processes from skid size to world-scale plants
- Neo will push latest technologies and trends like modular automation (MTP)
- Lifecycle challenge in Process Industries addressed: New flexible license and maintenance concept as a positive and strong game changer

SIMATIC PCS 7

SIMATIC PCS 7 complements for all other opportunities with a clear innovation path for the future!

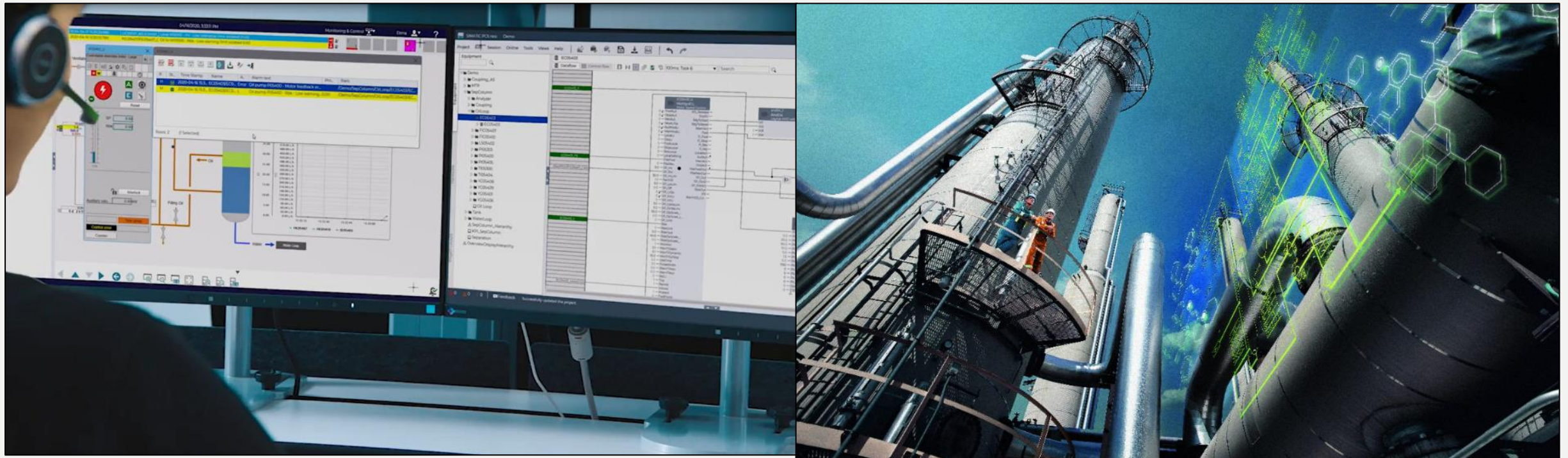
SIMATIC PCS 7 ideal choice for all plants requiring batch, **integrated** safety, telecontrol, regulated industries



Thanks from SIMATIC PCS neo



SIMATIC PCS neo V3.1 is first choice for all continuous processes



[Sales and Delivery Release: SIMATIC PCS neo V3.1](#)



Kontakt

Jens Norling Mathiassen

jens.norling-mathiassen@siemens.com

