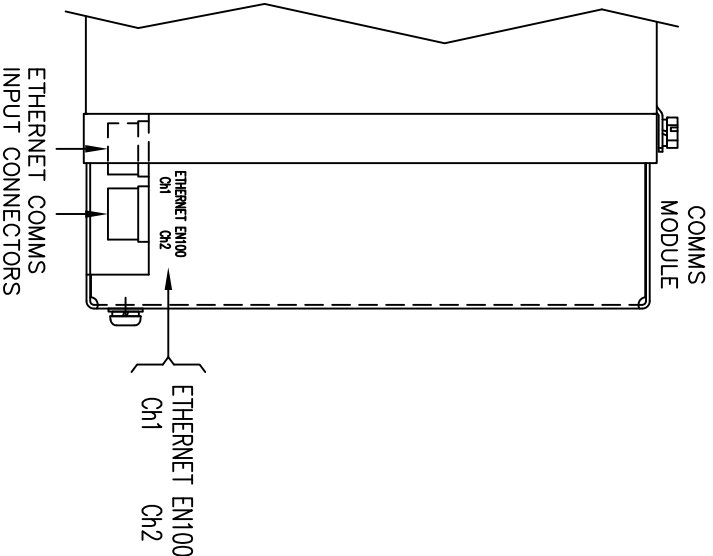
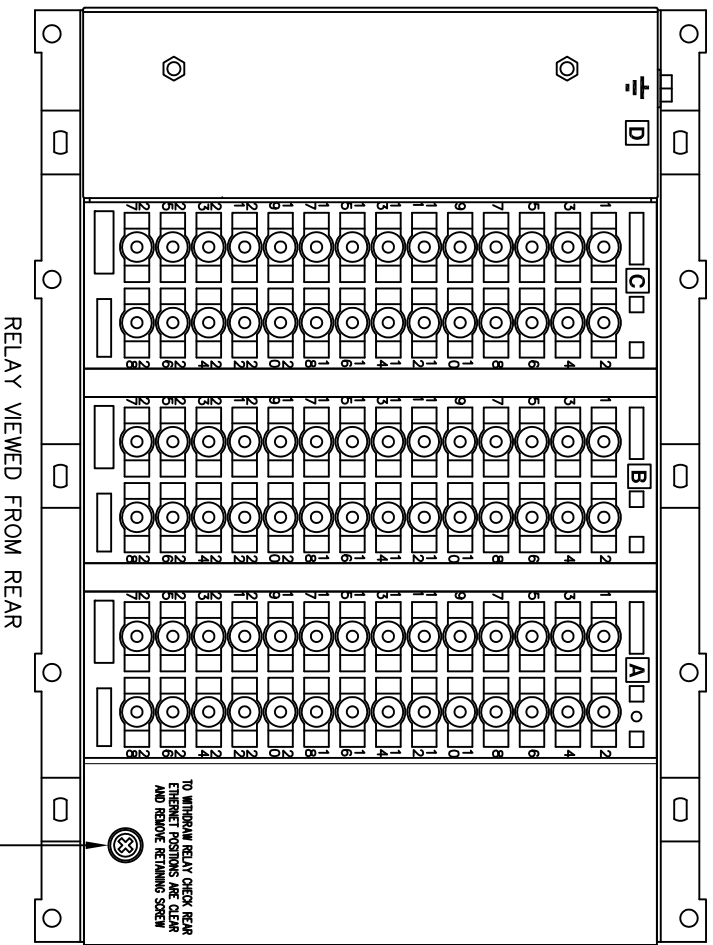
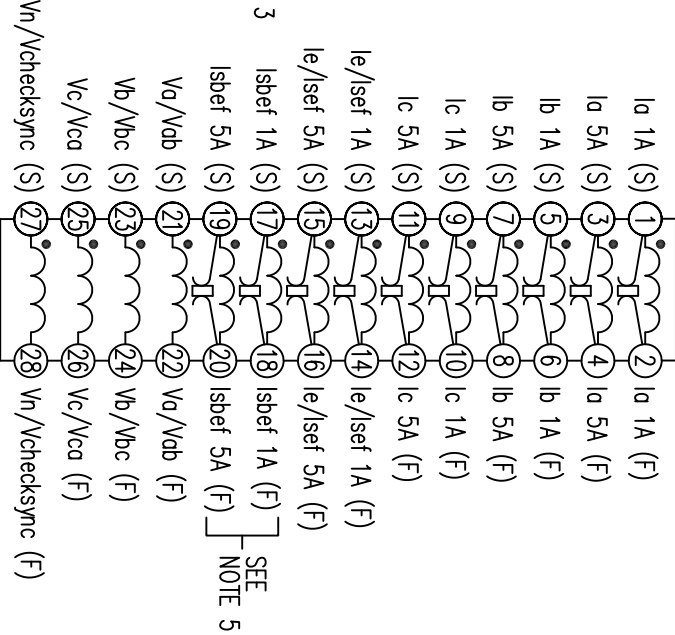
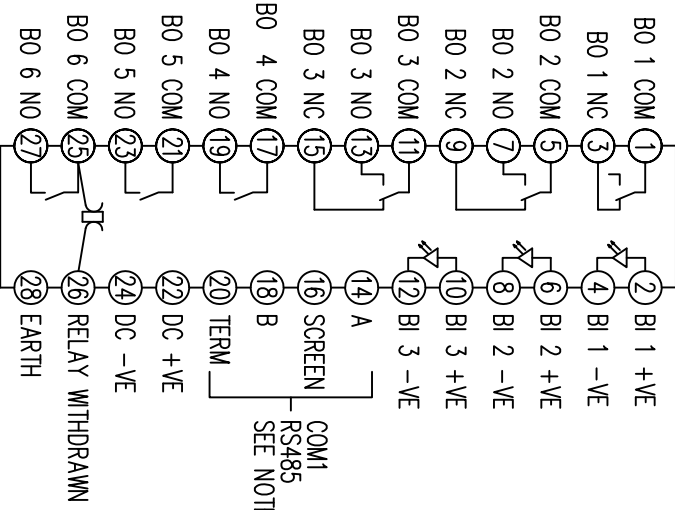
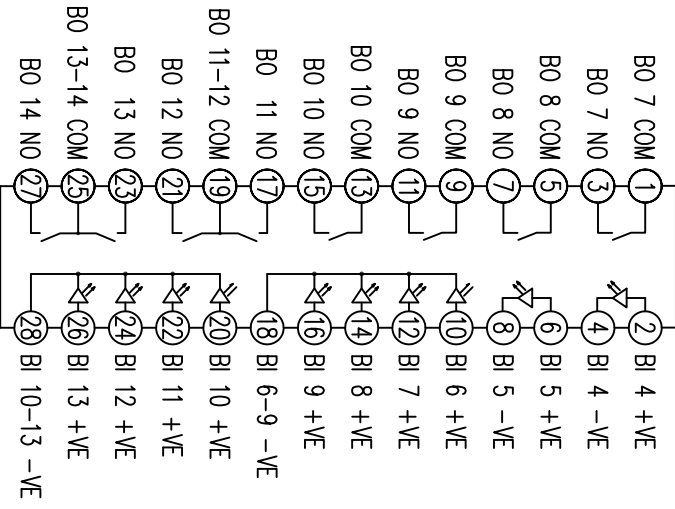
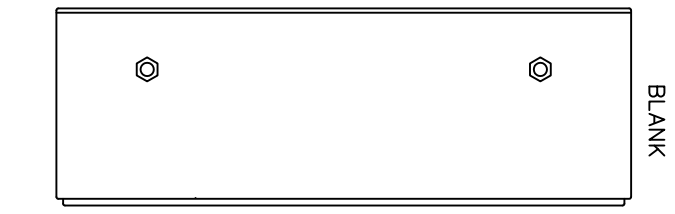


IF IN DOUBT ASK
DO NOT SCALE



NOT SUBJECT TO UPDATE
ONCE COPIED / PRINTED
OR DOWNLOADED



ABBREVIATIONS

I-CURRENT INPUTS
V-VOLTAGE INPUTS
BI-BINARY INPUTS
BO-BINARY OUTPUTS
CO-CHANGE OVER BINARY OUTPUT CONTACTS
NO-NORMALLY OPEN BINARY OUTPUT CONTACTS
NC-NORMALLY CLOSED BINARY OUTPUT CONTACTS

SERIAL PORT IDENTIFICATION

COM1	RS485 (ON BLOCK 'B' TERMINALS 14,16,18 & 20)
COM2	USB TYPE 'B' PORT (ON RELAY FRONT LABEL)

ETHERNET PORT IDENTIFICATION

Ch1	ETHERNET PORT (ON REAR COMMS MODULE)
Ch2	ETHERNET PORT (ON REAR COMMS MODULE)

Copyright © 2009 Siemens Protection Devices Ltd. Hebburn

3 RDW	30/7/13	19.07.13	CHANGED. MNA435/3650, 341770, KB
2 RDW	22/07/11	11.07.11	61850 COMMS ADDED MNS3444 KB 341139
1	19/05/09	05.05.09	340629

MATERIAL: Dimensions in millimetres : Surface texture in micrometres. Machine where marked V For explanation of dimensions, tolerances, notes etc. see B.S.308. Limit on untoleranced unmachined dimensions ± Limits on untoleranced machined dimensions to B.S.4500: i.e. up to 6±0.1; over 30 to 120±0.3; over 315±0.8; over 6 to 30±0.2; over 120 to 315±0.5; General unmachined angular tolerance ±

Finish: Treatment:

Title: 7SR224, E10, TERMINAL ID & WIRING DIAGRAM 5I,4V,13BI,2C0,11NO,1NC, RS485 & ETHERNET(x2) COMMS

First used on: Similar Articles: Supersedes: Drg. No. 2435W40035

SIEMENS PROTECTION DEVICES LTD.

Original Scale. NTS

DRAWN	MM/AL	CHECKED	RD.WATSON	APPROVED	RD.WATSON	DATE	29/06/09	IE	OPS	PCP	Purch. Spec.	TQ	EAC	CE	STD	A3
-------	-------	---------	-----------	----------	-----------	------	----------	----	-----	-----	--------------	----	-----	----	-----	----