

# MindSphere in action – Our open IoT operating system

Innovation Day USA 2017 | Princeton, March 27, 2017

Jagannath Rao, Vice President, Siemens Digital Factory Division

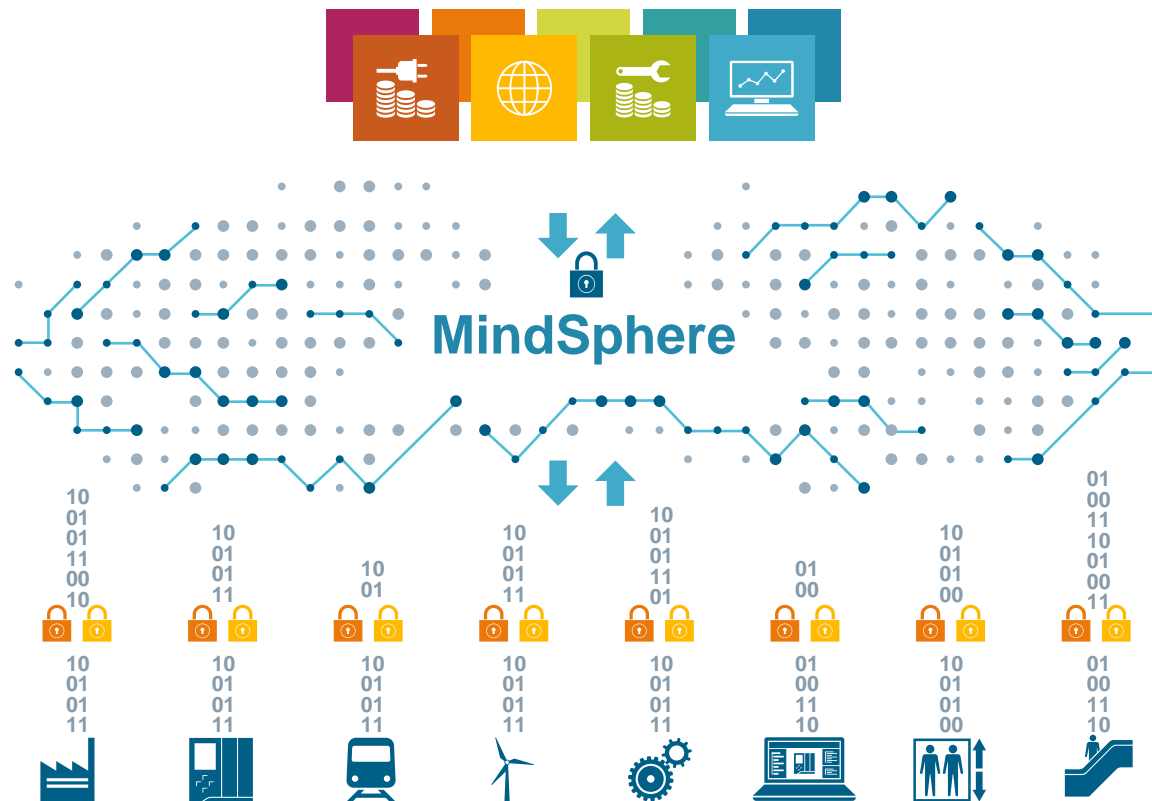
## Notes and forward-looking statements

This document contains statements related to our future business and financial performance and future events or developments involving Siemens that may constitute forward-looking statements. These statements may be identified by words such as “expect,” “look forward to,” “anticipate” “intend,” “plan,” “believe,” “seek,” “estimate,” “will,” “project” or words of similar meaning. We may also make forward-looking statements in other reports, in presentations, in material delivered to shareholders and in press releases. In addition, our representatives may from time to time make oral forward-looking statements. Such statements are based on the current expectations and certain assumptions of Siemens’ management, of which many are beyond Siemens’ control. These are subject to a number of risks, uncertainties and factors, including, but not limited to those described in disclosures, in particular in the chapter Risks in the Annual Report. Should one or more of these risks or uncertainties materialize, or should underlying expectations not occur or assumptions prove incorrect, actual results, performance or achievements of Siemens may (negatively or positively) vary materially from those described explicitly or implicitly in the relevant forward-looking statement. Siemens neither intends, nor assumes any obligation, to update or revise these forward-looking statements in light of developments which differ from those anticipated.

This document includes – in IFRS not clearly defined – supplemental financial measures that are or may be non-GAAP financial measures. These supplemental financial measures should not be viewed in isolation or as alternatives to measures of Siemens’ net assets and financial positions or results of operations as presented in accordance with IFRS in its Consolidated Financial Statements. Other companies that report or describe similarly titled financial measures may calculate them differently.

Due to rounding, numbers presented throughout this and other documents may not add up precisely to the totals provided and percentages may not precisely reflect the absolute figures.

# MindSphere – The cloud-based, open IoT operating system from Siemens



## MindApps

- Use **apps** from **Siemens**, **partners** or **develop own apps**
- Gain **asset transparency** and **analytical insights**
- Subscription based **pricing model**

## MindSphere

- Open interface for development of **customer specific apps**
- **Various cloud infrastructures: SAP, AtoS, Microsoft Azure** offered as public, private or on-premise (planned)

## MindConnect

- **Open standards** for connectivity, e.g., OPC UA
- **Plug & play connection** of Siemens and 3<sup>rd</sup> party products
- **Secure** and **encrypted** data communication

# Only two easy steps to get started – MindSphere to create new data-driven services

**SIEMENS**  
*Ingenuity for life*

## Step 1 Connect

Get MindSphere user-account, receive and integrate Connector Box into machine/equipment



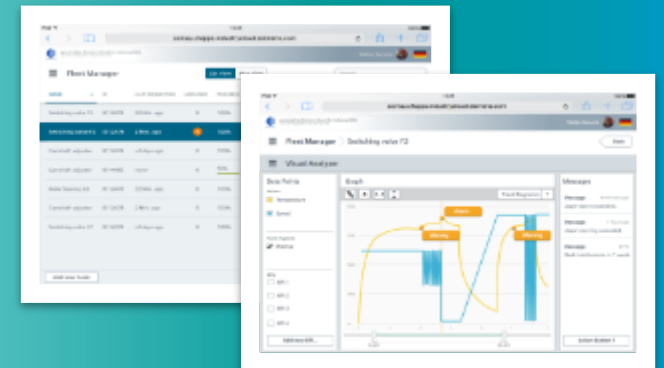
## Step 2 Configure

Configure data acquisition, connectivity and Visual Analyzer via MindSphere



## Run Service

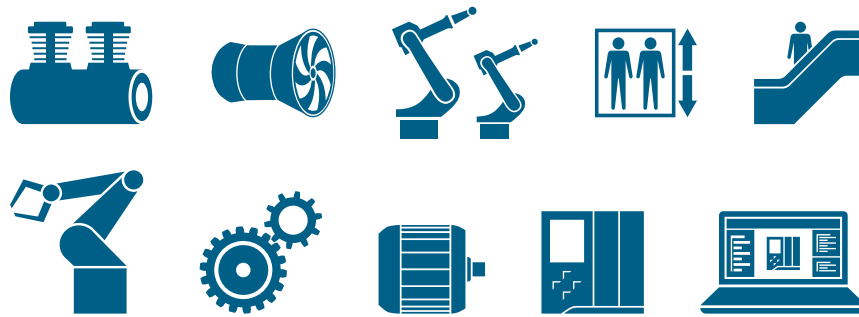
Monitor e.g. health status of all assets in MindSphere with Fleet Manager and drill into details using Visual Analyzer



# MindSphere increases business value for equipment suppliers and operators



## Equipment supplier



## Equipment operator



## Business Value

- **Increase Service efficiency/** lower warranty expenses
- Offer **additional services** (e.g. availability)
- **Enhance products** via feedback loop to R&D

- **Increase uptime/asset availability**
- Optimize assets
- Increase maintenance efficiency



## MindSphere customer success stories

### Major soft drink producer

#### Machine monitoring

- **Affordable IoT solution** for **predictive maintenance** of 150 motors
- **Increased asset uptime** through accurate failure prediction
- Global **accessibility of data**



### Major OEM for Honing Machines

#### Machine uptime and quality

- The **honing stones** must be replaced before either critical threshold values
- **Reduced downtime** and guaranteed quality
- **Differentiated** service offerings & revenue stream for OEM



### Major international airport

#### Failure prediction for baggage carts

- Identification of all potential failures in **baggage trail**
- **On-time maintenance** of defective baggage carts
- Visualization of **system failures**

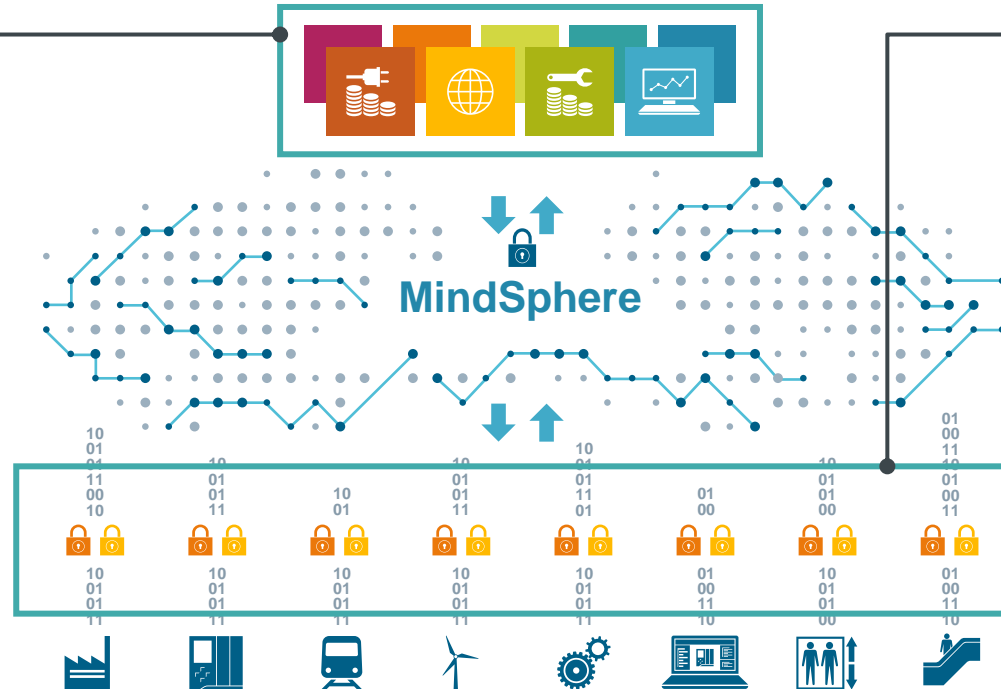


# MindSphere APIs – Scalable application and connectivity development

## MindApps API

### characteristics

- **Application Programming Interface (API)** of MindSphere for development of customer owned analytical apps (MindApps)
- Optimized for **industrial IoT App development** with additional reusable supporting modules (e.g. parsing, analytics and visualization modules)
- Upcoming MindSphere **App Store** will provide ready to use Applications



API beta release planned for beginning of 2017







## MindConnect

### characteristics

- Dedicated IoT Gateways with **MindConnect Nano** and **MindConnect IoT 2000**
- MindConnect **embedded** in standard Siemens industrial products also with engineering via TIA Portal (v14), with e.g. SIMATIC, Sinumerik
- Upcoming **MindConnect Software** and **APIs** for own integration into assets/ devices

## Ecosystem with strong partners being established ...

**MindSphere**  
The cloud-based,  
open IoT operating  
system

	App developer	System integrator	Technology partner	Infrastructure provider
<b>Atos</b>	✓	✓		✓
 Microsoft	✓		✓	✓
 SAP	✓		✓	✓
 IBM	✓	✓	✓	
 accenture	✓	✓		
 evosoft	✓			
 amazon web services	✓			✓

**... and more to come!**

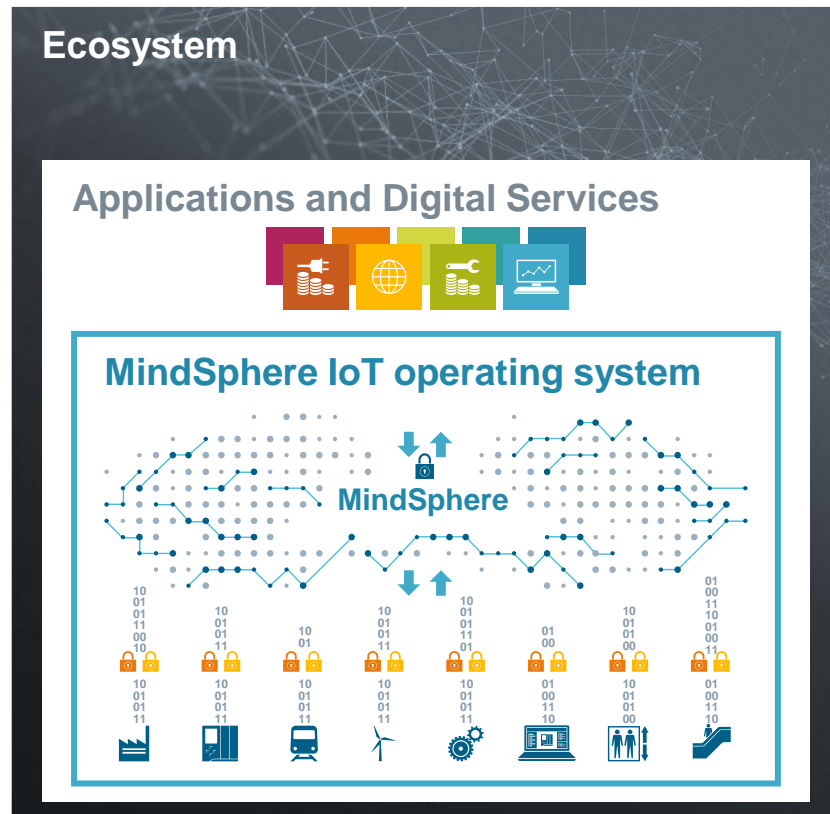


# MindSphere offers key strengths as cloud-based, open IoT operating system

## MindSphere – The cloud-based, open IoT operating system

## Unique MindSphere strengths

- Global Siemens **installed base of millions of devices** (30 million automation systems, 70 million contracted smart meters, 800 thousand connected products, e.g., trains)
- **Transfer of domain know-how into vertical-specific analytical apps**
- Integrated operational data with **Digital Twin to optimize simulation and engineering** (model-based analytics)
- **Plug and play connectivity** for quick connection of assets without coding
- Ecosystem with **broad domain expertise and horizontal IT capabilities**



## We support our customers in developing digital business based on MindSphere



- Deep-dive workshop to identify use cases with our proven MindSphere ideation approach
- Implementation of one of the identified use cases with a technical proof of concept (PoC)
- Ongoing support after the PoC to maximize benefit from MindSphere