

System Performance Dashboard

Taming the data jungle. 100% transparency, for fast decision-making.

Detect your bottlenecks

How punctual are your trains? Which sections of the network are well utilized and which are being over or underutilized? The System Performance Dashboard has been launched to answer questions related to different business-relevant key performance indicators (KPIs) of railway assets and vehicles with just a few clicks. Causes of delay, equipment failures and their impact are quickly identified by the dashboard and presented to the user.

Railigent.

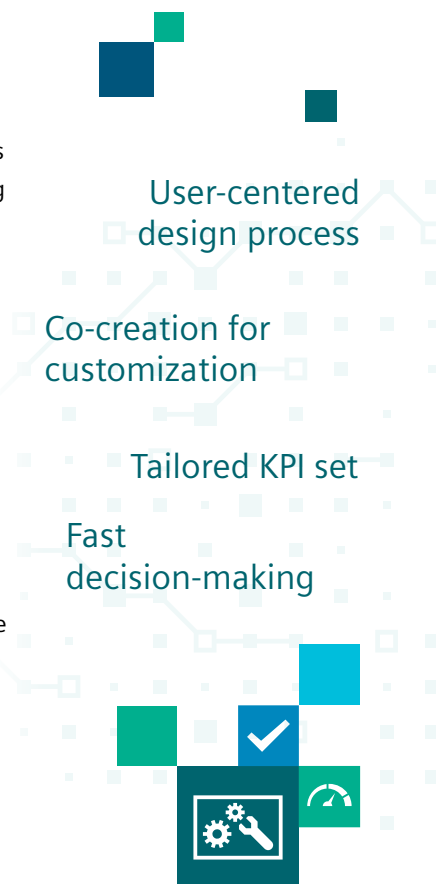
The Mobility Application Suite

The dashboard is an innovative application on Railigent, Siemens' Mobility application suite. It has been designed with a modular architecture. The preset KPIs include Punctuality, Network Utilization, Condition and Capacity of the monitored rail network. You can analyze your assets with the on-the-spot system insight for 100 percent transparency. The more data the system records, the greater the added value that

results from the information gained.

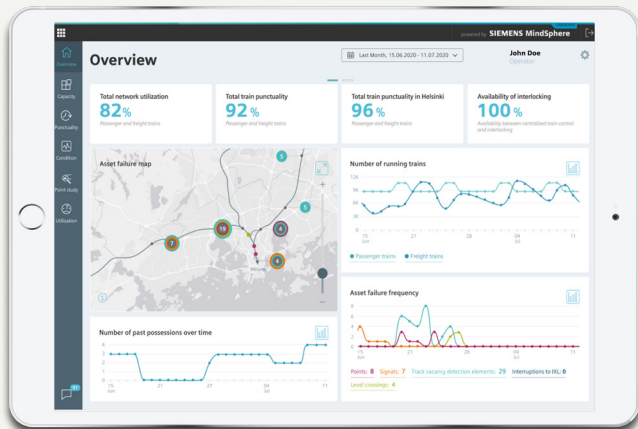
Therefore, the KPIs build the basis for better strategic decisions. With Railigent, customers can merge operational train data, monitoring or diagnostic data, e.g. with historical consumption data, weather forecasts, or information on major events in rail infrastructure.

Siemens Mobility has developed a special, user-friendly dashboard that clearly processes the data. Users can retrieve the desired information as a function of their profile – whether chief executive officer or operator. It can detect bottlenecks in the rail network with meter accuracy as well as name the cause of the problem. This broad and in-depth correlation of different parameters is unique on the market.



Mainline Dashboard

Customizable user interface and data preparation for different target groups.



Infrastructure Manager

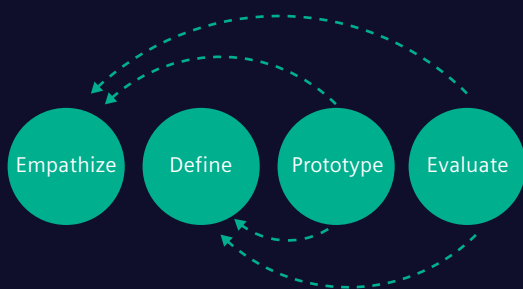


Operations Manager



Maintainer

User-Centered Design Process



Our dashboard projects follow an iterative process of user experience to achieve best results.

Your data transferred from the source to the application



Let's get in contact



[siemens.com/mobility](https://www.siemens.com/mobility)

- ← **Launchpad with apps & services**
- ← Analytics and visualization in the cloud
- ← Siemens' Internet of Things platform
- ← Secure data transmission via data capture unit
- ← Data collection
- ← **TMS / interlocking / others**