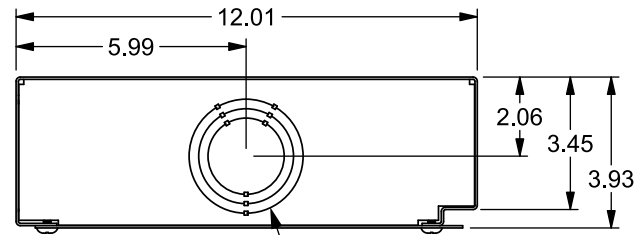


# Catalog Number: RAG24

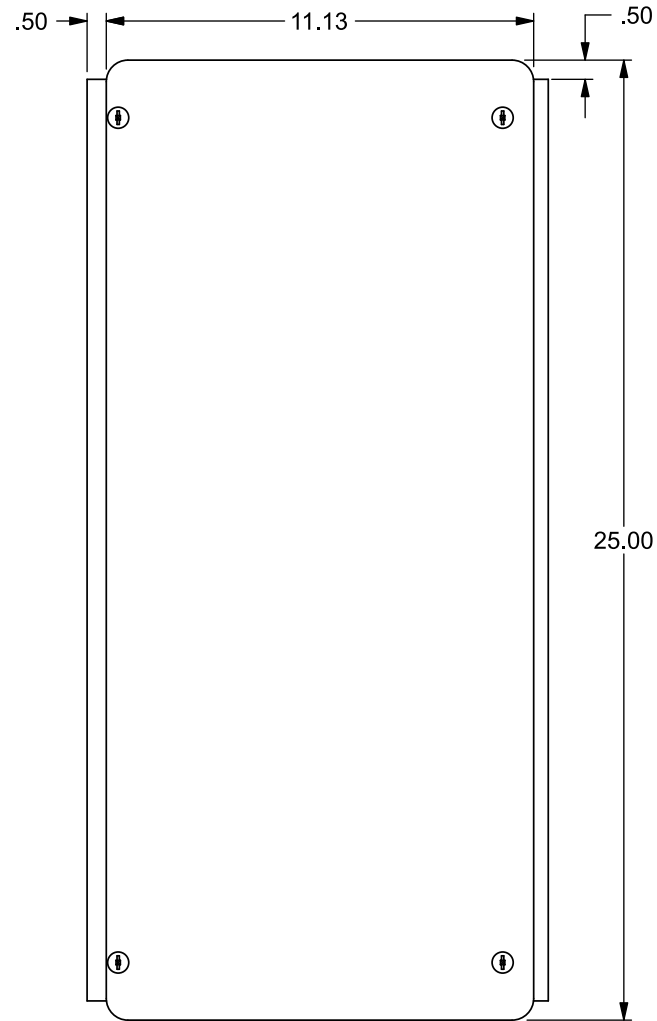
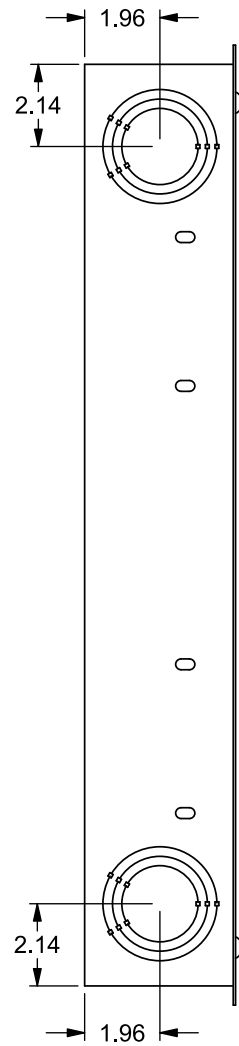
## Features and Ratings



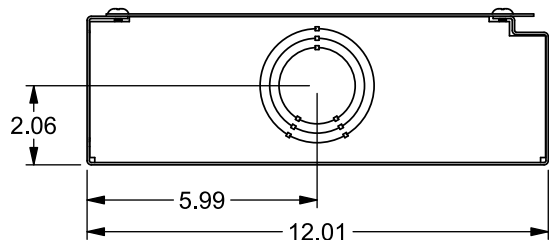
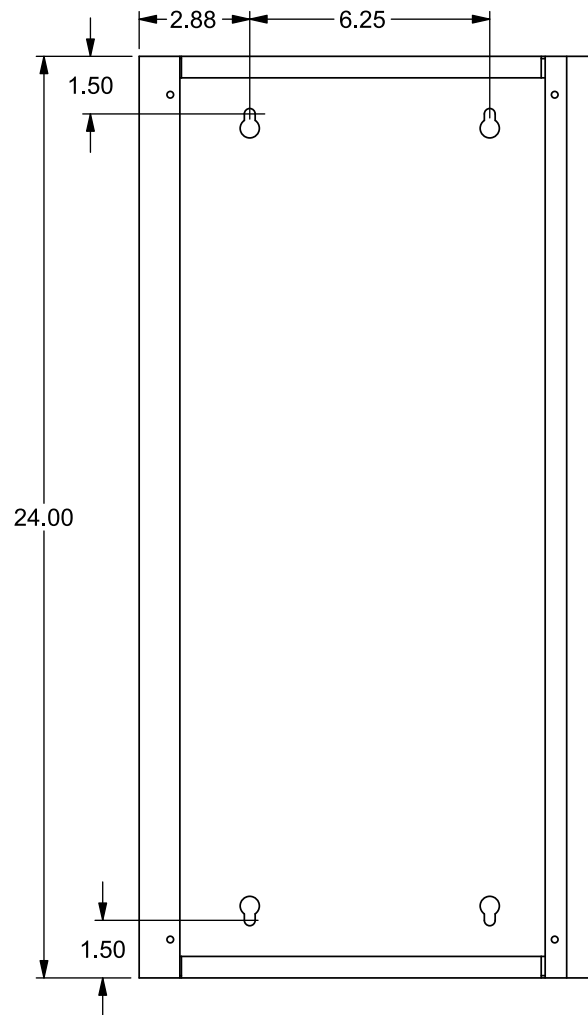
- Compatible with Siemens 1 or 3 Phase Indoor Load Centers 24" or Higher
- Flush Trim Included
- Hardware and Pass-Through Bushing Included for Attaching to a Load Center
- Used to Convert 24" Load Center or Larger to a Riser Panel



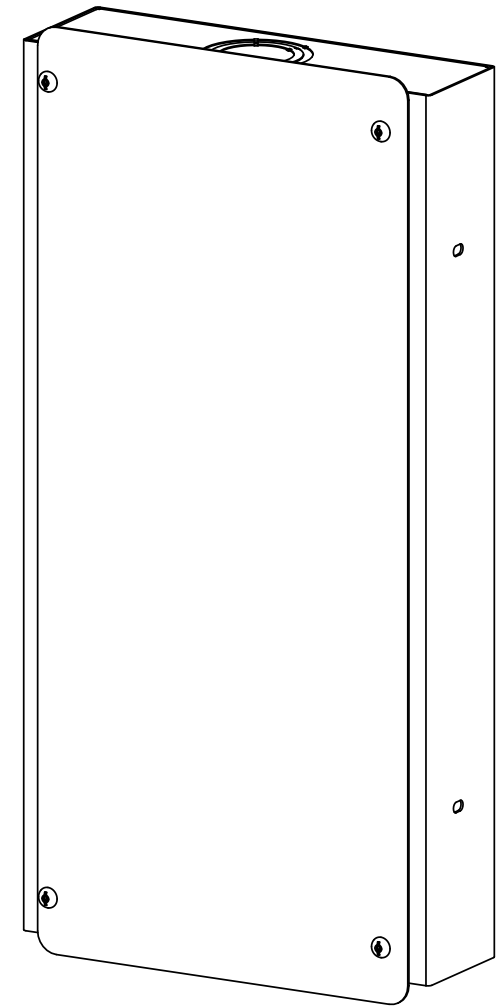
1-1/2", 2", 2-1/2" KOs (4x)



VIEW SHOWN WITH COVER REMOVED



ACCEPTABLE GUTTER TAP KITS	AL/CU WIRE RANGE	
	MAIN	TAP
SIEMENS RLK250 (LUGS & COVERS)	250 kcmil - 1/0 AWG	250 kcmil - 6 AWG
ILSCO & PENN-UNION KITS REQUIRE THREE EACH OF: GTA250-250 LUG GTC250-350 COVER	250 kcmil - 1/0 AWG	250 kcmil - 6 AWG
ILSCO & PENN-UNION KITS REQUIRE THREE EACH OF: GTA500-500 LUG GTC500 COVER	500 - 350 kcmil	500 kcmil - 2 AWG
ILSCO & PENN-UNION KITS REQUIRE THREE EACH OF: GTA750-500 LUG GTC750-500 COVER	750 - 500 kcmil	500 kcmil - 2 AWG



© 2019 Copyright Siemens Industry, Inc.

**SIEMENS**  
Siemens Industry, Inc.

**Load Centers**

Description:

**24" Riser Gutter**