

**SIEMENS**

*Ingenuity for life*



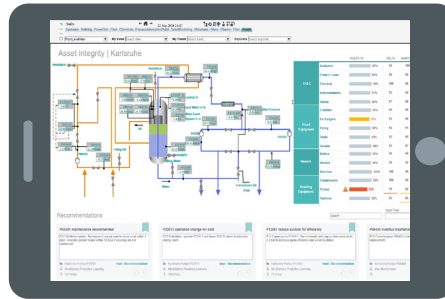
# XHQ Operations Intelligence Software

Turn data into actionable information

[siemens.com/xhq](https://www.siemens.com/xhq)

# XHQ Operations Intelligence Software

- Simple access to complex data
- Real-time information
- Make use of data you already have
- Break down barriers between software silos
- Drive collaboration at all levels
- Empowered decisions, anytime, anywhere

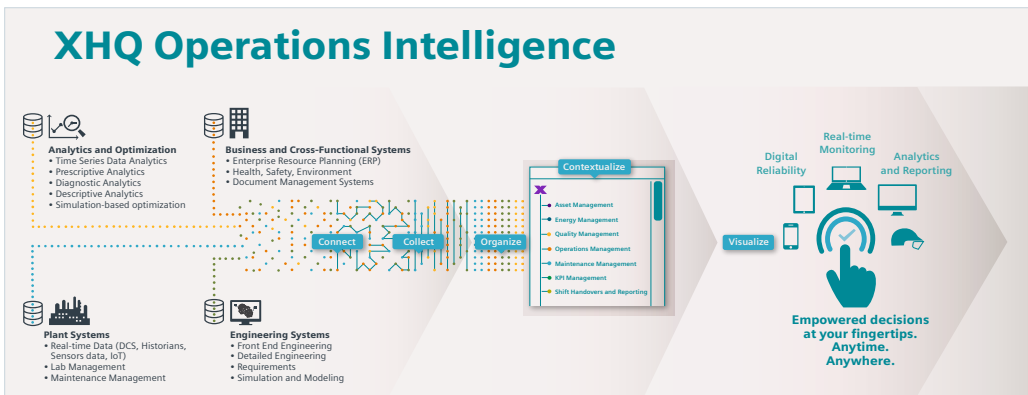


## What is XHQ?

XHQ is a software that makes operations intelligence easier. It is used for the aggregation, integration, analysis, and visualization of asset and business information from multiple back-end data sources. XHQ gives you simple access to complex data for better and faster decision-making, anytime and anywhere.

It's easy to get started, easy to expand, and XHQ will work for you all day, every day, in real-time.

It's that simple. It's XHQ.



XHQ information is available in web browsers, on mobile devices, and through APIs.

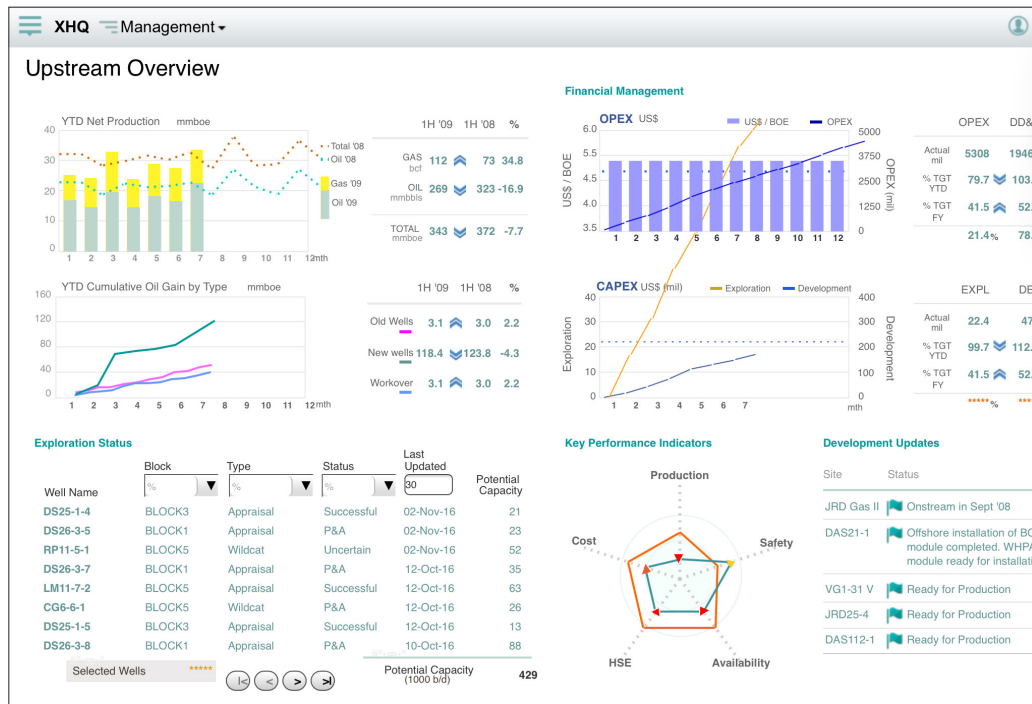
## What does it do?

XHQ connects to any data source: databases, historians, maintenance, ERP, quality, supply chain, and many others. It collects and organizes the data, conceptualizes it into a cohesive information model, and visualizes the results.

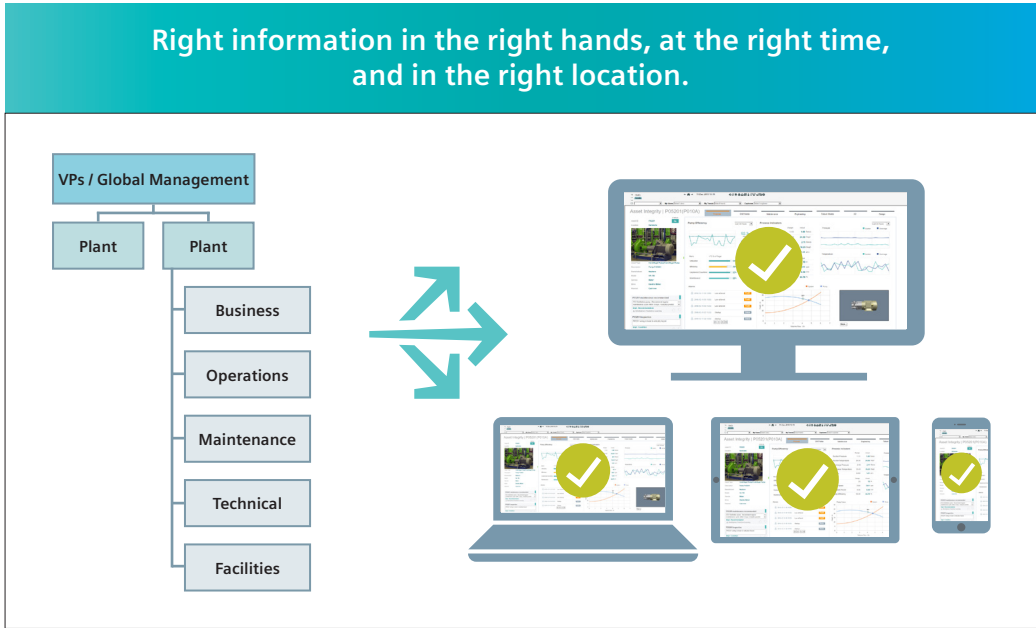
## How does it work?

Most people interact with XHQ through its rich web pages, which are customized to suit local needs. Web pages are built from a variety of widgets, including schematics, pictures, tables, charts, trends, GIS, and hyperlinks.

Displays are driven by the XHQ information model, which organizes and contextualizes the data to represent how the business is organized – by function, by facility, by production line – whatever makes sense. An XHQ solution can make use of data from many different sources, including process historians, relational databases, batch systems, web services, and systems such as SAP.



## Why XHQ?



XHQ provides valuable information and analysis of your entire operation, helping drive the business to achieve new benchmarks and improve productivity.

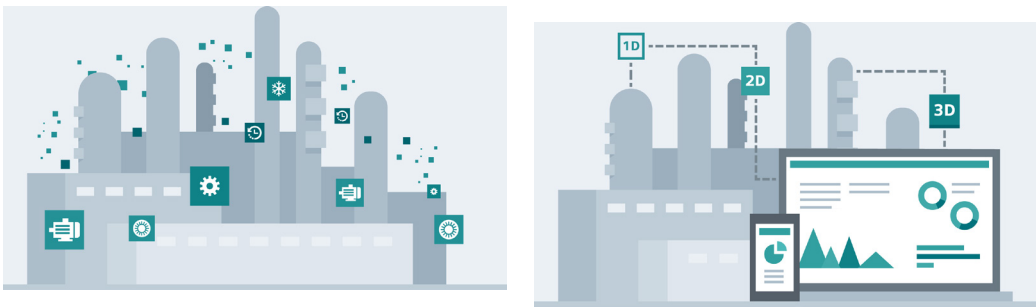
XHQ delivers insight and facilitates tactical, operational, and strategic operations decision-making by staff in operations, maintenance, engineering, business, and other disciplines.

**XHQ provides:**

**Situational awareness:** Integrates information across multiple applications

**Access to your digital twin:** See all relevant information at your fingertips

**Decision support:** Act faster and more consistently to improve operations and resolve problems



## How can I use it?

Here are just some of the ways XHQ can be used:

- **Executives and Managers** can view real-time operational status updates through a visual model of the enterprise. They can easily locate summaries of performance indicators for every division under their control.
- **Planners and Analysts** can view real-time representations of current operations, complete with forward-running plans, and compare present and past performance.
- **Supervisors of Departments and Activities** can see an overview of the processes within their control, whether in order-entry, maintenance, operations, or elsewhere.
- **Task-specific Workers** can obtain information from various systems and make better bottom-line decisions in their daily work.

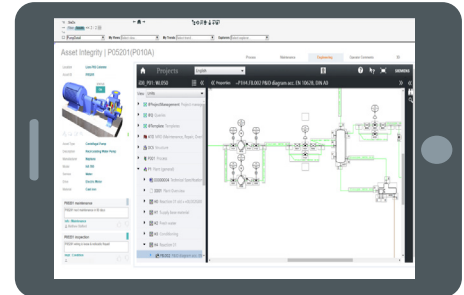


Example: Asset Manager View

- Corporate rollup KPIs
- Global fleet management
- Asset level performance and bad actors

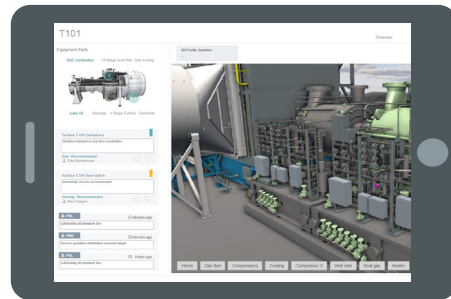
Example: Engineer View

- Front-end engineering
- 2D drawings
- P & ID
- Spec sheets
- Detailed engineering
- Requirements



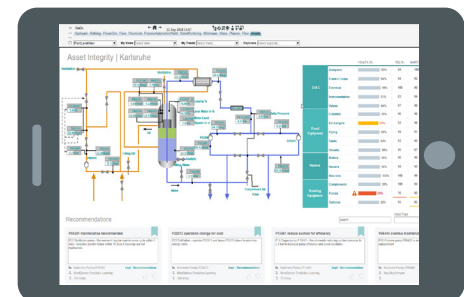
Example: Maintenance Operator View

- 3D visualization
- Detail parts view and explosion
- Maps
- Immersive operator training
- Field-work planning



Example: Production Manager View

- Financial data
- Production KPIs
- Utilization
- Safety
- Environment
- Efficiency



## XHQ in the process industry

### Where XHQ fits well:

- Process Industries
- Daily operations
- Distributed and remote operations
- Complex business systems that do not show a single version of the truth
- Complex business systems that don't easily support new business initiatives and/or workflows

### What customers can expect:

- Integrated engineering, maintenance and operations that lead to lower operating costs
- Visibility and ability to identify bad actors leading to improved asset reliability
- Improved shift handover through better understanding of state of operations
- Identify operating and asset reliability problems early with KPIs and analytics leading to proactive operations
- Pre-built solution with easy customization

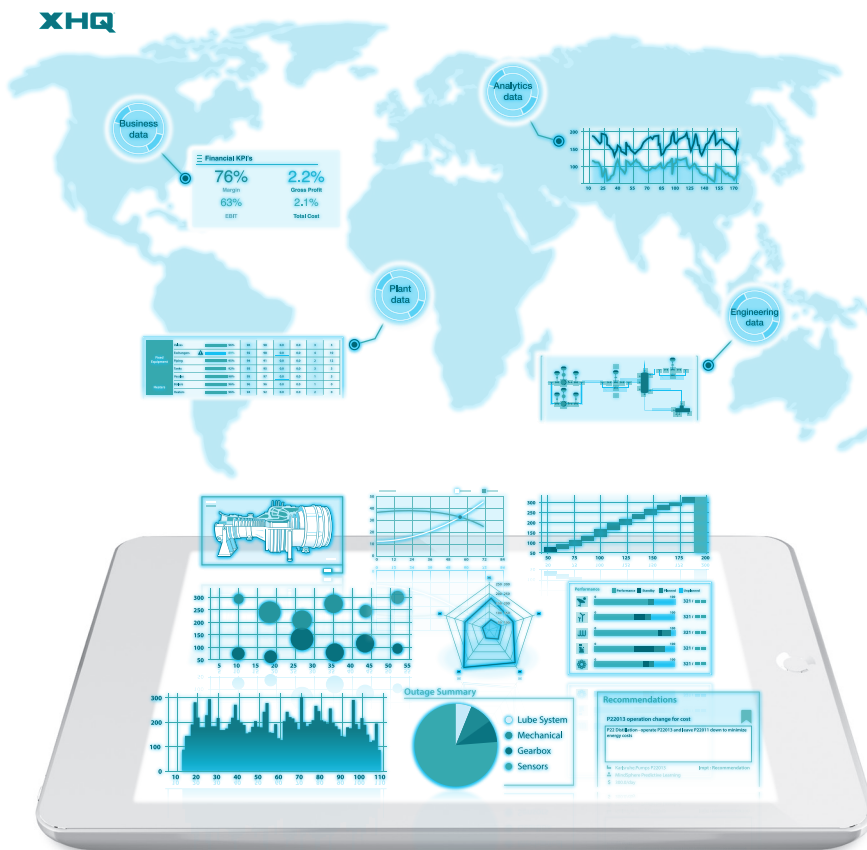
## Operational extensions

**Performance Management** extends XHQ with capabilities for target setting, process and equipment monitoring, alerting, notification, electronic logs, and shift reports.

XHQ supports several types of analytics, ranging from trending and statistical analysis capabilities that are built into XHQ, to business intelligence dashboards, to in-depth analysis of complex data sets. **Performance Analytics** provide in-depth analysis of complex data sets.

**XHQ Gateway** exposes XHQ data to other systems through APIs. Business intelligence products such as Microsoft Power BI, Tableau, and Qlik can access XHQ solutions.

**XHQ Best Practices Packages** and **Helper Tools** provide rich content and tools for specific business problems including KPI management and log file display.



Contact us to learn how to get immediate benefits with reliable and real-time information at your fingertips.

email: [info.xhq@siemens.com](mailto:info.xhq@siemens.com)

© 2020 Siemens Digital Industries Software

**XHQ Operations Intelligence Software**  
Siemens Industry Software Inc.

6 Journey, Suite 200  
Aliso Viejo, CA 92656  
Phone: +1(949) 448-0600  
E-mail: [info.xhq@siemens.com](mailto:info.xhq@siemens.com)

Article number: DIPA-B40001-00-7600