

Digitale instrumenterings- løsninger

- til SIMATIC og andre åbne systemer

SIEMENS



Dagens værter



Niels Christian Christensen, Technology Specialist

Jesper Juul Jørgensen, Technology Specialist

Henrik Skibsted, Technology Specialist

SIEMENS



Agenda

PROFINET til instrumenter (CFU) incl. PDM

Flow, teknologimoduler

SIWAREX-nyt, SIMATIC og IOT

SITRANS Library / SIMIT

SITRANS mobile IQ

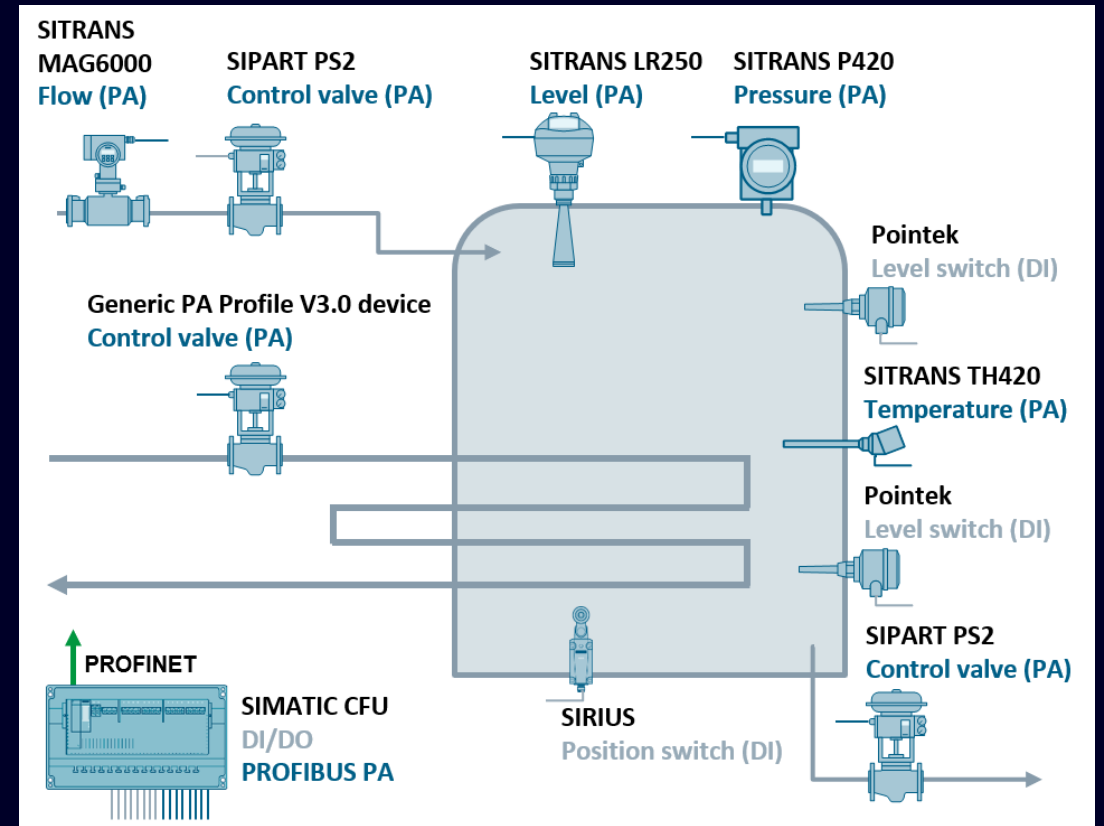
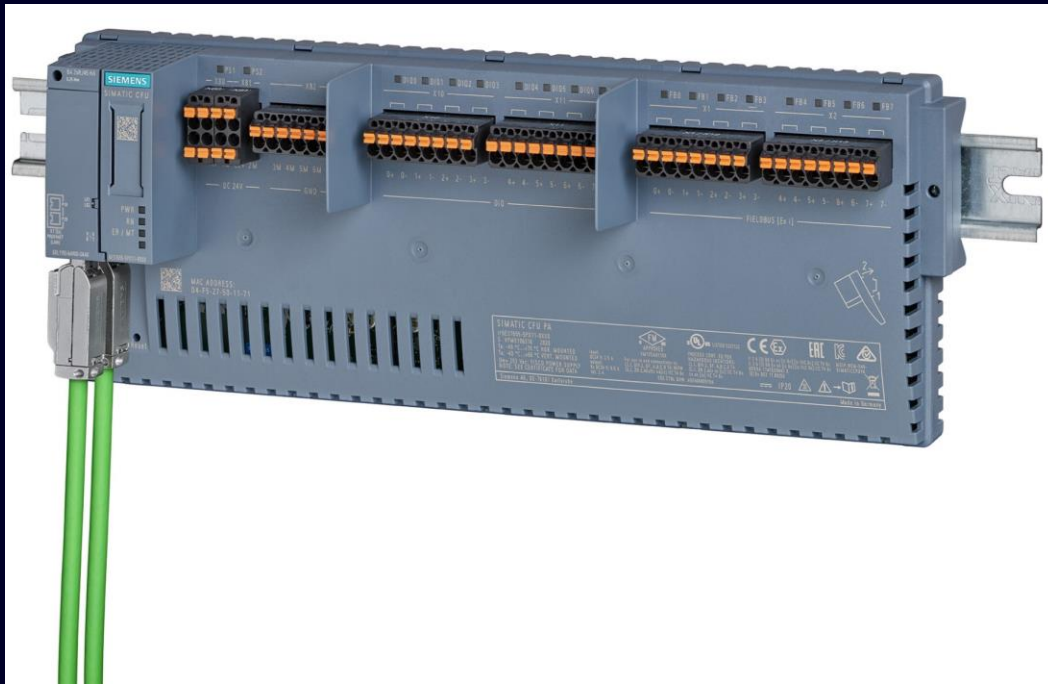
Niveau og Positioner

Multisensor

Mag8000 IIOT-modul

SIMATIC Compact Field Unit ... the cornerstone for digitalization at the field level

Example Storage tank



Integrated in TIA Portal V17 (V16 via GSDML)
Integrated in PCS7

SIMATIC PDM – Process Device Manager

Flexible

Supports all types of applications

- Single point
- Local
- Central
- Integrated in PCS 7

Universal

Supports a lot of communications

- PROFINET
- PROFIBUS-DP/PA
- HART
- Foundation Fieldbus
- Modbus

Safe and Secure

According concept of SIMATIC security developed

- User management
- Function rights for system functions

Open

Integration of field devices based on norms and specifications

- Data export via standard XML interface
- Prepared for I4.0

Comprehensive

- Device library content more as 4.500 device descriptions
- Extensive system functions for commissioning and service

Cost effective

- Significantly shorter commissioning time
- Parallel work on common database

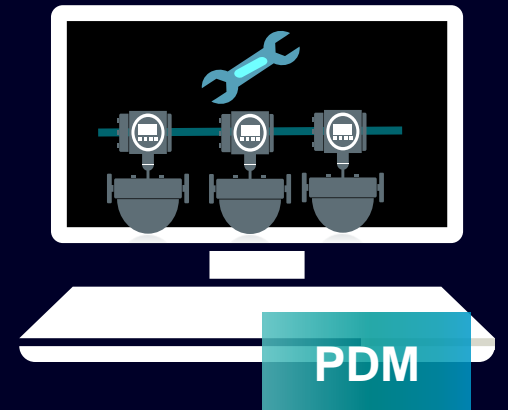
Easy of use

- Uniform self-explanatory user interface
- Common system functions for all types of field devices

Innovative

- Support modern technologies for
- Field busses
 - Web technologies
 - Device integration

SIMATIC PDM at a glance



SIEMENS

SIMATIC Technology Modules

SIMATIC S7-1500



SIWAREX WP52x



SIMATIC S7-1200



SIWAREX WP2x1



SIMATIC ET 200SP



FCT070, FST070, WP3x1 & AI2xSG



Coriolis Flow Meters with integrated DSL or analog sensor with Digital Sensor Link (DSL)



← One cable for data communication and power supply



SIWAREX junction box and load cells

SIEMENS

SITRANS FCT070 - Direct access to the SIMATIC world

SIMATIC S7 300-1500
V5.6* SP3 <



ET 200SP
ET 200 SP HA



FCS
Coriolis
Sensor



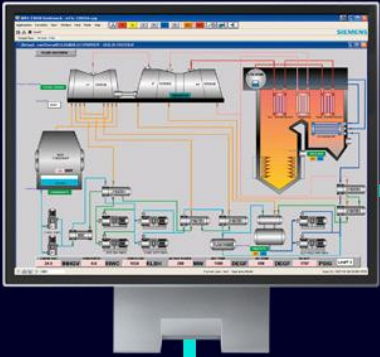
TIA Portal V16*
or
PCS7 V9.0 SP2*

| Feature / Function | Benefit |
|---|--|
| Easy integration into automation process control (TIA portal and PCS7) | <ul style="list-style-type: none"> ▶ No transmitter between automation and flow meter required. ▶ Cost effective integration for PLC controlled machines |
| SITRANS FCT070 ET 200SP technology module | <ul style="list-style-type: none"> ▶ Easy combination of the transmitter with other ET 200SP modules (flexible periphery system) |
| Digital data communication between PLC and flowmeter | <ul style="list-style-type: none"> ▶ Fast and safe measuring data exchange between flowmeter and PLC |
| In combination with the DSL usable for analog Coriolis flowmeter with low diameter | <ul style="list-style-type: none"> ▶ Low flow measuring with full Coriolis flowmeter range |
| SITRANS FCT070 and ET 200SP have the ATEX Zone 2 approval. With barrier SITRANS I300 the flowmeter can be used in Ex Zone 1 | <ul style="list-style-type: none"> ▶ Easy and safe installation in explosion proofed areas |

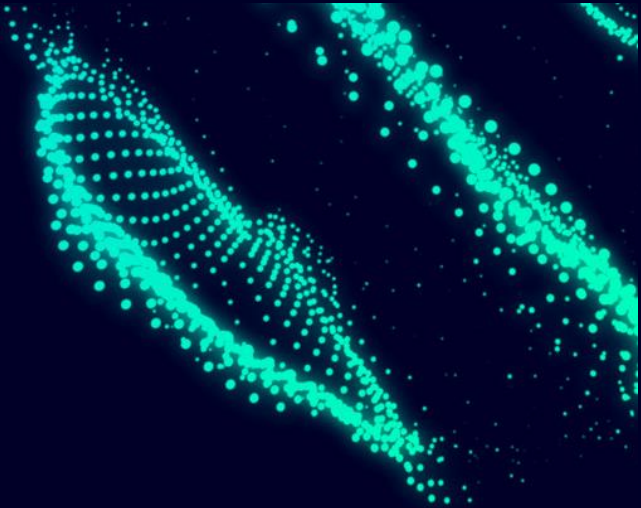
*or higher ** WinCC V7.4 (PCS7) WinCC RT Professional V15 (TIA Portal)

New Technology Module fully integrated into the ET 200SP SITRANS FST070 for Ultrasonic Sensors

WinCC Faceplates for
PCS 7 and TIA Portal**



SIMATIC S7
300-1500
V5.6* SP4 <



TIA Portal V17* or
PCS 7 V9.1 SP2*



SIMATIC ET 200SP



Ultrasonic device
SITRANS FST070

SITRANS FS DSL

SITRANS FSS200



*or higher ** WinCC V7.4 (PCS7) WinCC RT Professional V15 (TIA Portal)



SITRANS FST070 - 3.2 Plug and play: Start the Wizard Clamp On Configuration in SIMATIC PDM

Step 2 of 8: Pipe data

SIEMENS

Specify pipe and liner information. Device settings for wall and liner sound velocity are calculated based on pipe and liner material.

Pipe class: Carbon steel (ASA)

Pipe size: Custom

Dimension calculation: Outer pipe diameter - Wall thickness

Outer pipe diameter: 0.0508 m

Inner pipe diameter: 0.04572 m

Pipe wall thickness: 0.00254 m

Pipe wall sound velocity: 3200.0 m/s

Compensation

Active compensations:

- Pipe expansion due to temperature
- Pipe expansion due to pressure
- Sensor temperature compensation
- Disturbed flow profile compensation

Liner data

Liner material: Not applicable

Inner pipe roughness: 5E-05 m

Transfer Messages Print < Back Next >

Step 7.1.3 of 8: Measurement path configuration

SIEMENS

Measurement path 1: Receive signal

Number of sample points: 1024 samples/waveform (very slow)

Export/Editing: Nothing selected

View Link axes Print

Signal snapshot: Measurement path 1

Fluid receive signal

UP signal: (red circle)

DN signal: (blue triangle)

75.0208 117.6875

75 80 85 90 95 100 105 110 115

μs

6502 5000 4000 3000 2000 1000 0 -1000 -2000 -3000 -4000 -5000 -6500

Measurement path 1

Measurement path 2

Measurement path 3

Measurement path 4

After this step the measurement path has been configured. The wizard will then continue the configuration of remaining measurement paths.

Transfer Messages Print Snapshot < Back Next >

SITRANS FST070

2. Explosion proofed installation

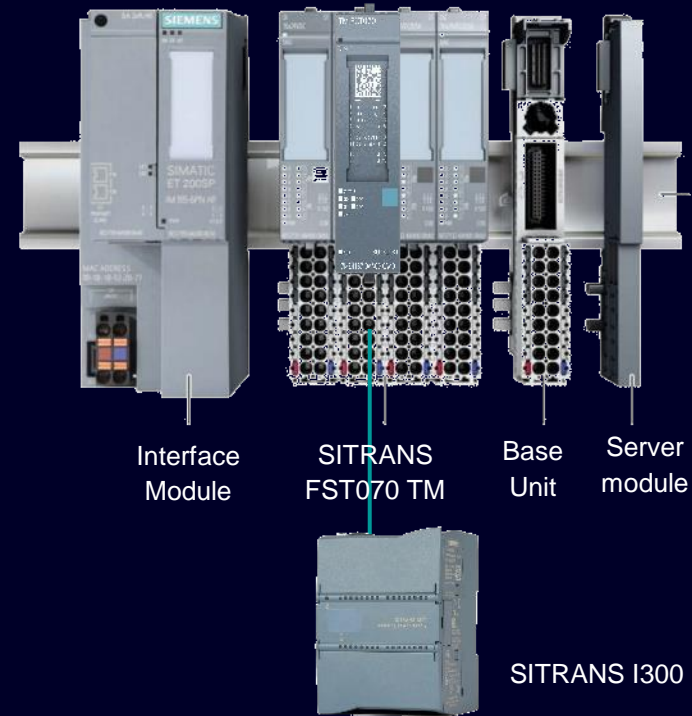
SITRANS FST070 - ATEX

ATEX Zone 2

- SIMATIC ET200 SP TIA Selector
- FST070 Transmitter 7ME4138-6AA00-0BB1
- SITRANS I300 Barrier A5E39832532

ATEX Zone 1/0

- FS DSL
- Transducer FSS200

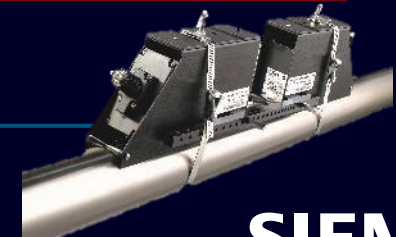


Zone 2

Zone 1 / 0



SITRANS FS-DSL



SIEMENS

SIMATIC IO-Link

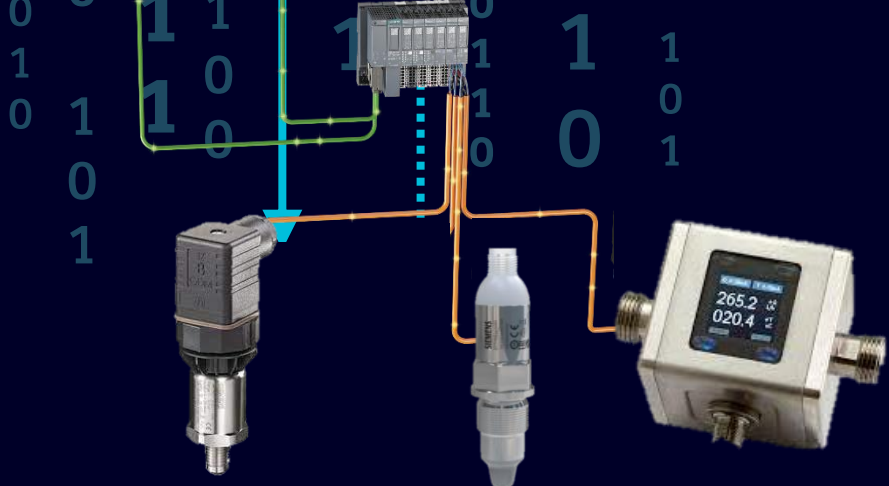
Engineering level



Control level



Field level



Communication down to the field level

Communication is possible with both simple and advanced sensors

Bi-directional transfer of cyclic and acyclic data

SITRANS FM100
SITRANS LCS050

Coming soon:
SITRANS P200/P220

New Technology Module fully integrated into the ET 200SP SIWAREX WPs

SIWAREX WP341 for continuous weighing

- Most compact electronics for belt weighing, weighfeeder, and solids flowmeter
- Such as platform or hopper scales
- Mining, Minerals, Food and Recycling
- Webserver and SIWAREX DB



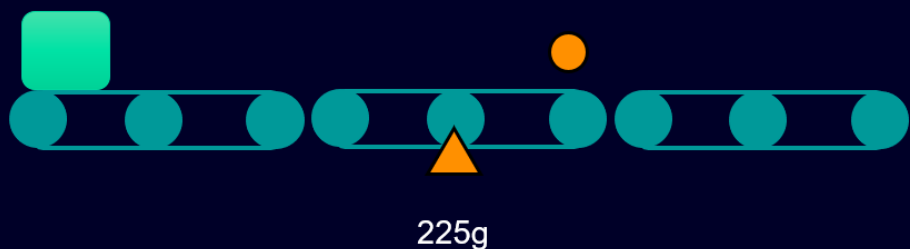
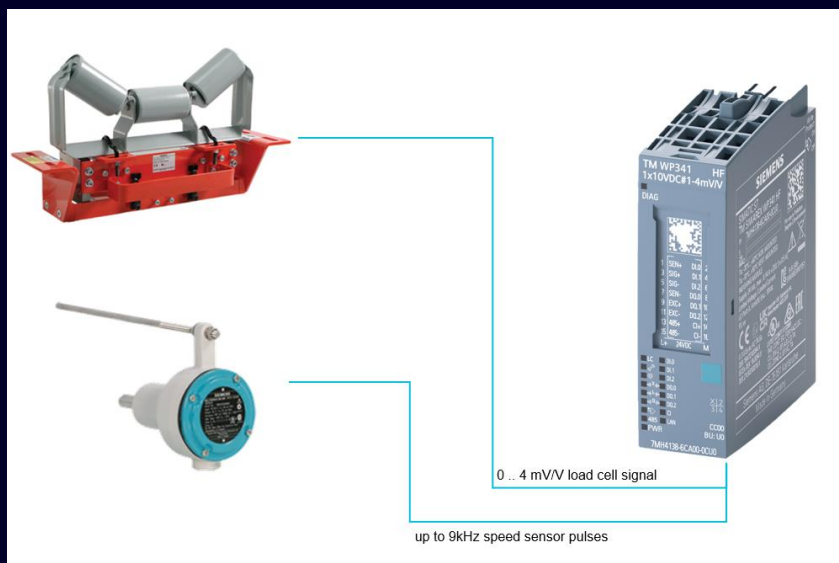
SIWAREX WP351 for dynamic check weighing

- Dynamic check- and catch weighing electronic for SIMATIC ET 200SP
- Integrated into existing ET 200SP controller
- Stand alone with own CPU, Interface module, or open controller
- Integrated within TIA Portal and PCS 7



SIEMENS

SIWAREX update



SIWAREX WP 341:

- Vejebånd til SIMATIC SP-serie
- Nyt projekt med nye features
- Med WEB-server

SIWAREX WP 351:

- Checkvejer til SIMATIC SP-serie
- Nyt projekt med nye features
- Med WEB-server
- Siemens kan tilbyde komplet løsning

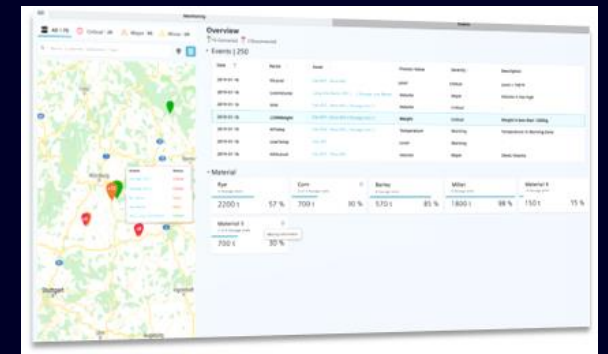
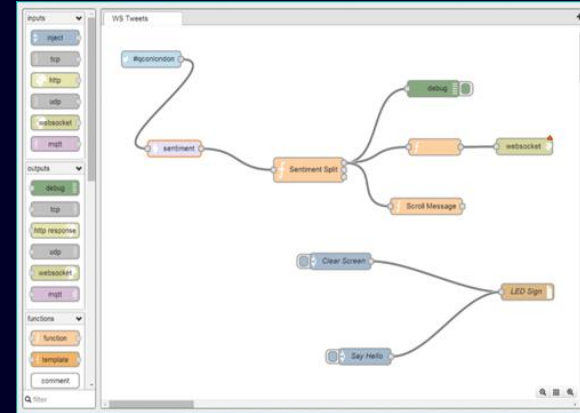
SIWAREX update

SIMATIC IOT2000 SG-Shield



Available nodes

- MQTT
- Twitter
- Modbus
- GPIO
- OPC UA
- S7
- IBM Watson IOT
- Microsoft Azure
- SIWAREX
- ...



SITRANS Library



TIA integration

Temperature

- SITRANS Tx320 HART
- SITRANS TH300 HART

Flow

- SITRANS FC430 PA
- SITRANS FCT070 / FST070
- SITRANS MAG 6000

Pressure

- SITRANS P320/420 HART

Level

- SITRANS LR560 HART
- SITRANS LU240 HART
- SITRANS LR1xx HART

Weighing

- All SIWAREX WP electronics
- Ready to use for projects with function blocks and HMI visualization



PCS 7 integration

SITRANS Library with Faceplates

Integration of SIMATIC software, SITRANS and SIPART process instruments into the SIMATIC PCS 7 based on APL

SIMATIC ET 200SP / HA

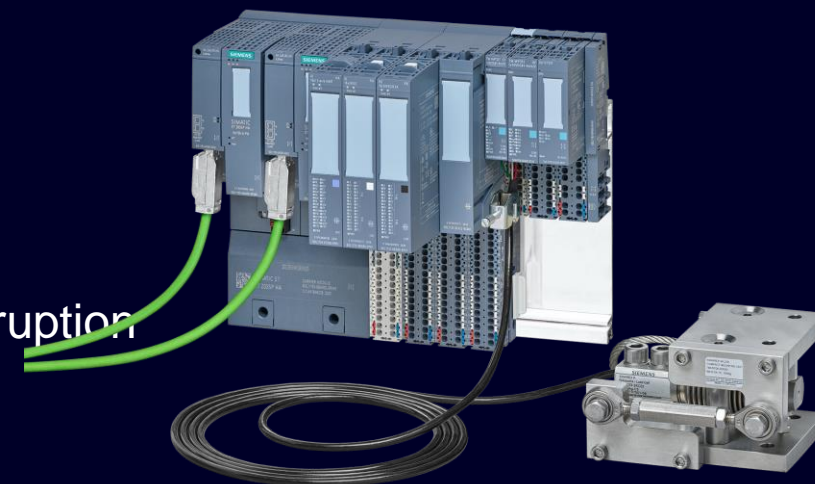
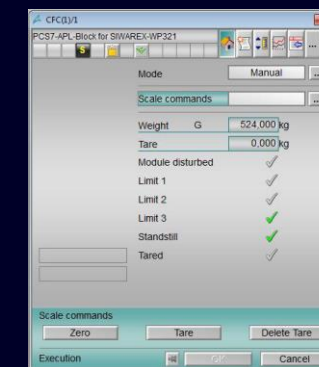
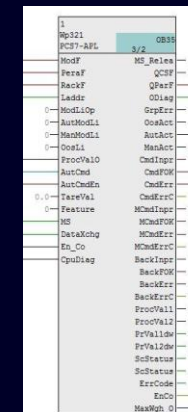
Technology modules for weighing and flow

SIMATIC CFU

Field distributor brings PROFINET down to the field level

Exchange of field devices and expandability during operation without interruption

Low commissioning, servicing and life cycle costs



SIEMENS

SIMIT - Simulation based Engineering from Virtual Commissioning to Operator Training

Device models Siemens field device

- Available with application example
- Specific field device models
- 11 models will be available in the first step
- Continuous update via SIOS
- Higher engineering quality by enabling early detection of errors and more comprehensive automation checks
- Faster commissioning including specific field device functions tested early w/o final hardware



SITRANS mobile IQ

Understøtter pt.:

- SITRANS LR1xx serie (niveau)
- SITRANS Probe LU240 (niveau)
- SIPART PS100 (ventil positioner)



SIEMENS

SITRANS LR1xx / LU240



SITRANS LR1xx & LU240

- Opsætning via mobiltelefon
- SITRANS AW050 Bluetooth adapter
- SITRANS mobile IQ app

SIPART PS100



SIPART PS100

- Opsætning via mobiltelefon
- SITRANS AW050 Bluetooth adapter
- SITRANS mobile IQ app

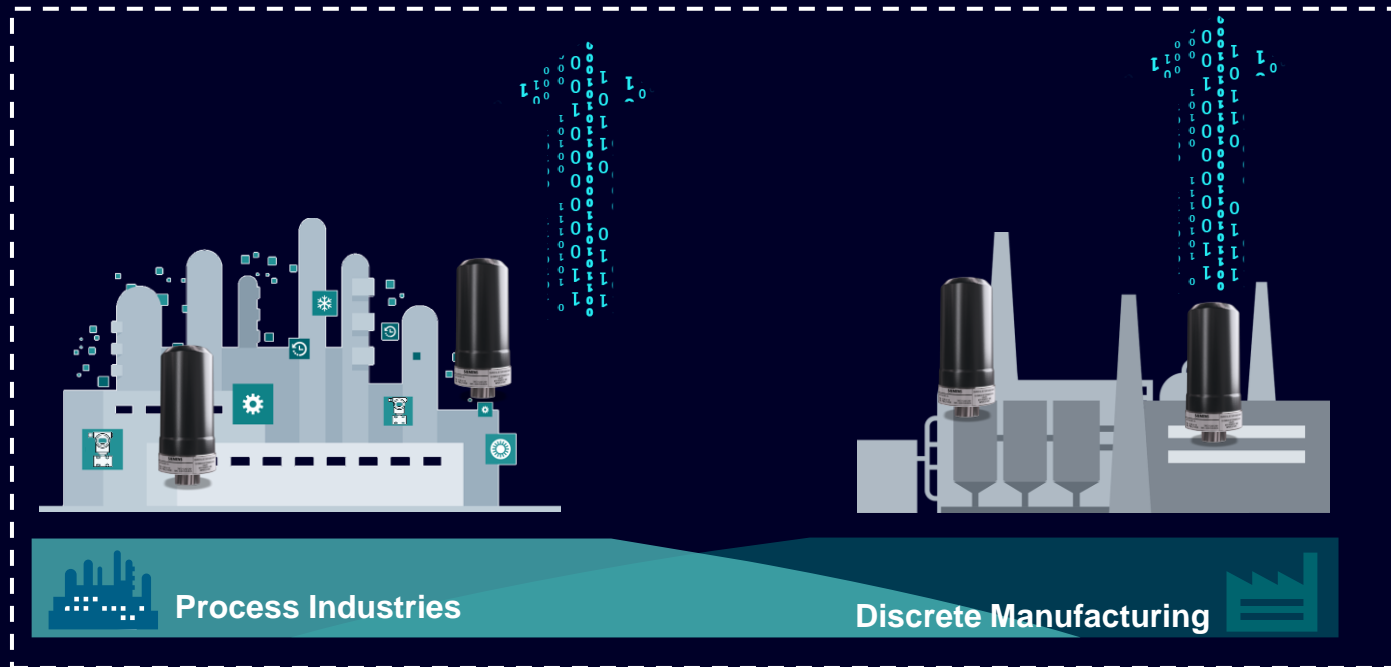
SITRANS SCM IQ - Overvågningskomponenter

Self-serviced operation of SITRANS SCM IQ

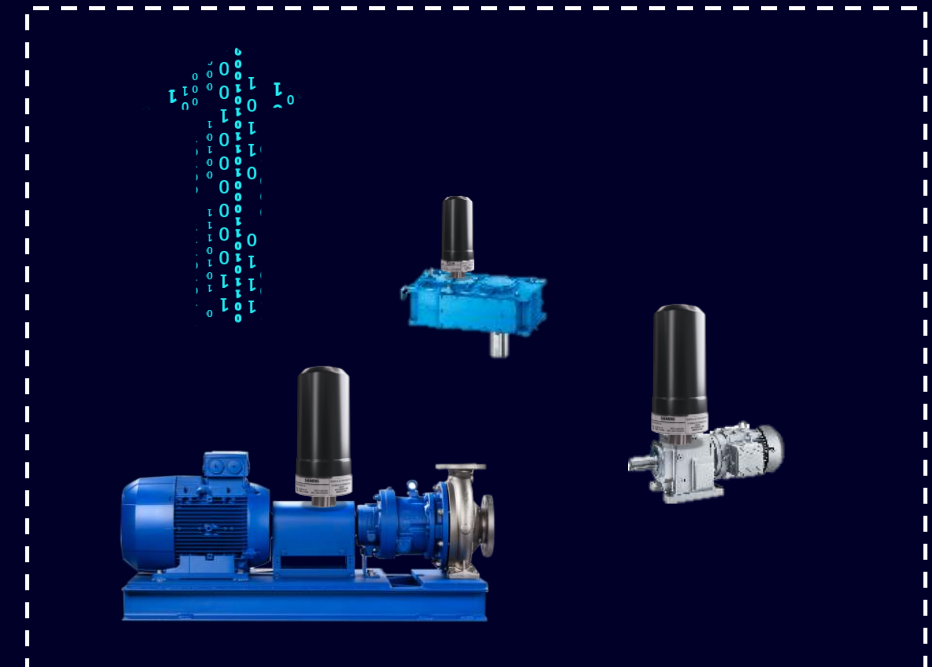
Customers operate their application on their own



Supervision as a service
OEM delivers assets equipped with SITRANS MS200 and offers continuous supervision of assets via SITRANS SCM IQ



← Brownfield / Retrofitting →

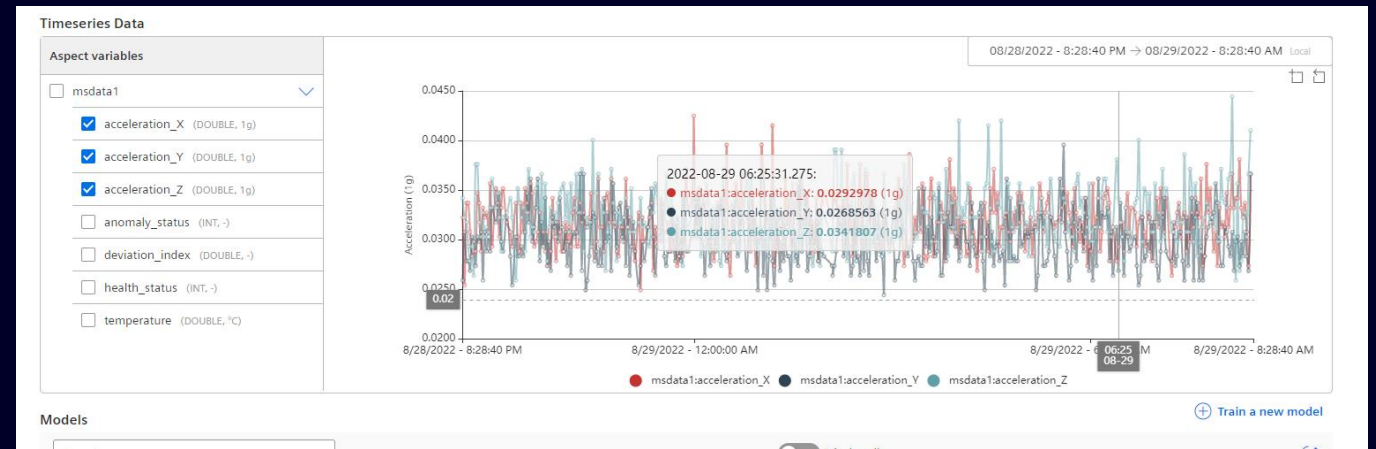
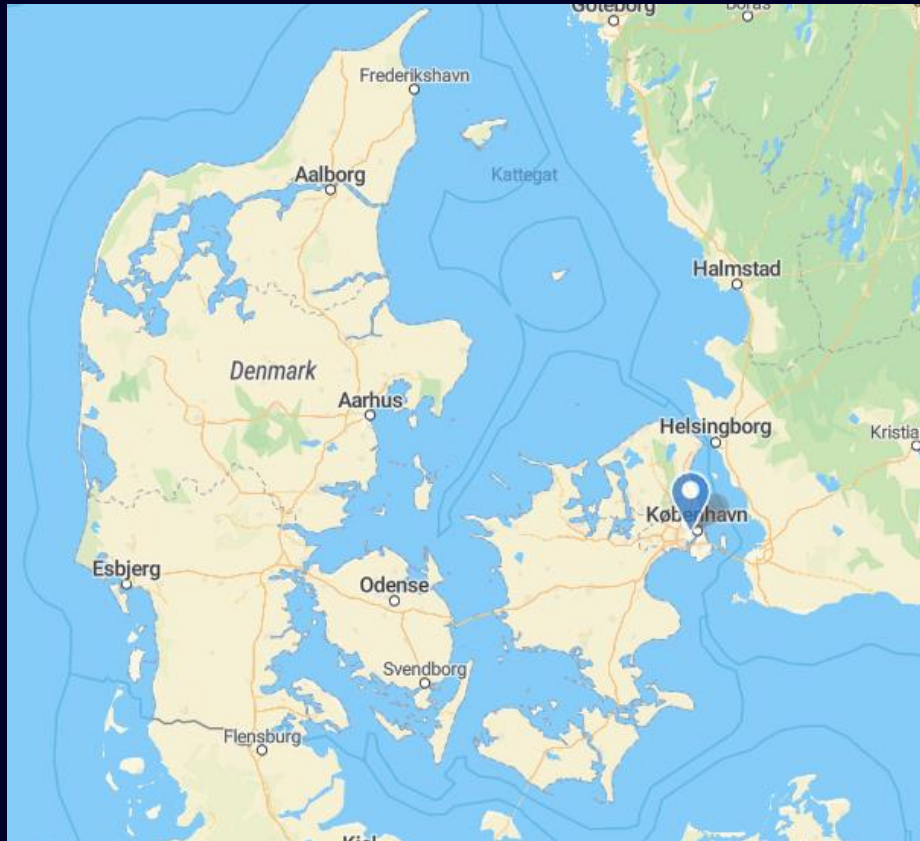


← OEM / new parts business →

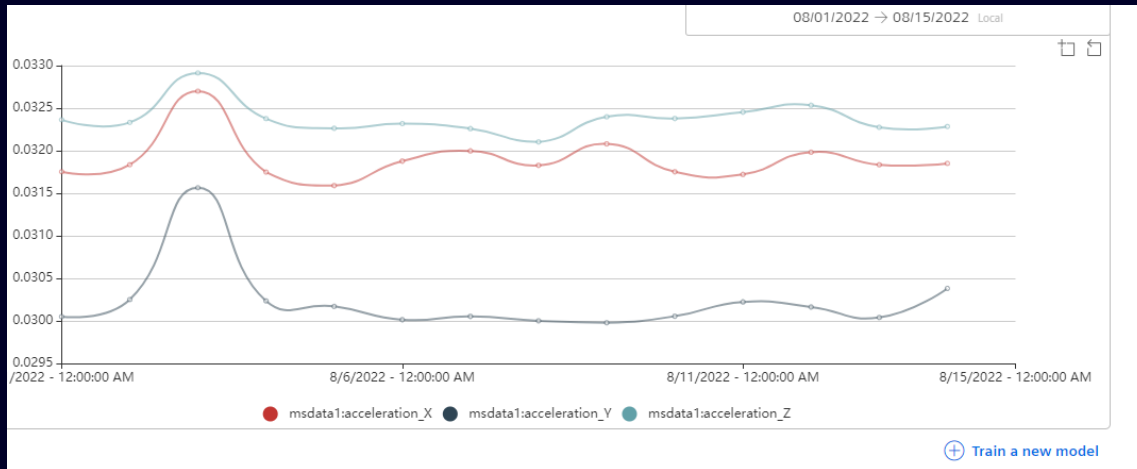
SITRANS MS 200 + CC 220



SITRANS MS 200 + CC 220



SITRANS MS200



Multisensor

- Opsætning via mobiltelefon
- SITRANS AW050 Bluetooth adapter
- SITRANS mobile IQ app
- Hvem skal have vagt
(man bestemmer selv rækkefølge)

SITRANS FM MAG8000 IIoT Wireless Communication Module



SIEMENS

MAG 8000 3G Module – Migration Plan

3G turns into IIOT

3G Module



3G network sunset

- Network carriers shut off service in MAG 8000 key countries
- 2G remains for simple data usage (Email, M2M)

Migration



3G Module

2G fallback (RAT)

- 3G module supports 2G auto-fallback function

IIOT Module based on 4G

- 1-on-1 replacement of 3G modules
- LTE IoT technology with 5G ready
- Usability improvement
- PI digital solution
- No 3G fallback (RAT)

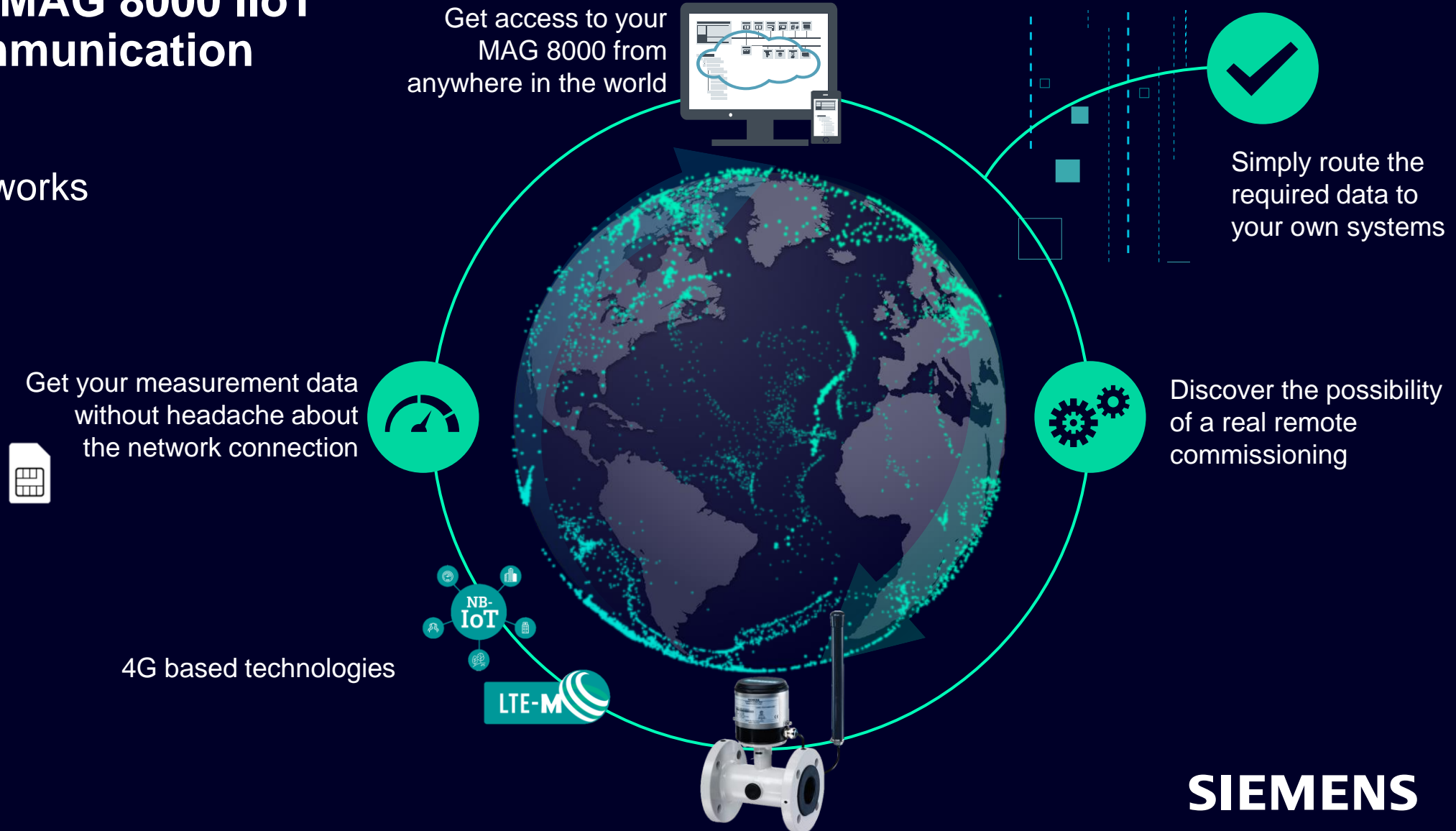
4G



3G

SITRANS FM MAG 8000 IIoT Wireless Communication Module

How the system works



SITRANS FM MAG8000 IIoT Wireless Communication Module

Siemens 1

MAG8000 + IIoT WCM + Connectivity + Access

Delivers MAG8000 with IIoT WCM as a system

- MAG8000 water meter
- IIoT Wireless Communication Module
- SIM card
- 3-year license for IIoT Web Application and connectivity

Siemens 1.1

User License

- Relicensing option for 1, 2 or 3 years or a subscription

Customer 2

FTP, Email, Device Management (Parameter Configuration, Data Transfer, Real-Time Status Information), IoT Gateway

IoT Gateway

MAG8000

Kontakt

Niels Christian Christensen
niels.c.christensen@siemens.com

Jesper Juul Jørgensen
jesper.j.joergensen@siemens.com

Henrik Skibsted
henrik.skibsted@siemens.com



SIEMENS

WEBINARER MED INSPIRATION, VIDEN OG VÆRDI

Industry Information Live

Tilmeld dig, se og gense på
www.siemens.dk/di-webinarer



Tilmeld dig på
www.siemens.dk/di-tilmeld-nyheder

Du finder også vores nyheder på
www.siemens.dk/di-nyheder

NYHEDSBREVE TIL INDUSTRIEN
UDKOMMER 8-10 GANGE OM ÅRET

Industry Information News

TIPS OG TRICKS PÅ YOUTUBE

Industry Information Demo

Find hurtigt playlisten og abonner via
www.siemens.dk/di-demo

