



| RailXplore APM



The digital performance twin for trackside signaling assets. Access live data of your assets 24/7 and benefit from build-in data analytics to maximize the efficiency, reliability, and availability of your system.

RailXplore APM (Asset Performance Monitoring)

Product Description

To remain competitive in the future, rail operators need to make the most of their assets, and thus have clear visibility of their condition. **RailXplore APM** provides rail operators and maintainers prompt and

precise information about assets' health status to support everyday decisions. The solution is designed to manage core signaling trackside assets and maximize the performance of rail infrastructure operations.

RailXplore APM application

- ✓ User-friendly diagnostics
- ✓ 24/7 real-time access to data and alerting of incidents and events
- ✓ Assets life-cycle information
- ✓ Advanced data analytics
- ✓ Ensure secure and safe data access



RailXplore APM integrates next-generation technologies to enable an end-to-end asset monitoring system:



Signaling components



Secure connectivity



Cloud and edge computing

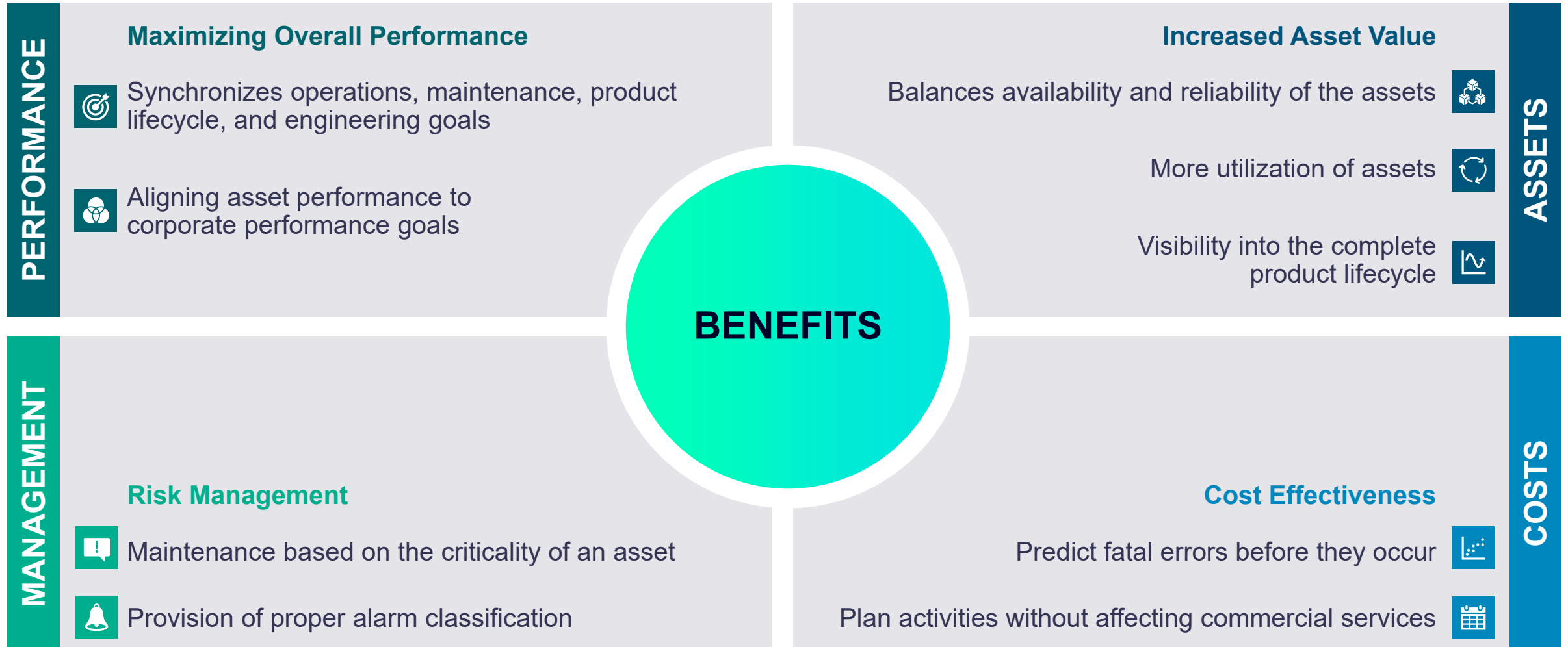
Data collection from:

- Clearguard TCM100
- Clearguard ACM200/250
- Clearguard XCM300

- CoreShield Connect platform
- Coreshield DCU
- Secure your data stream and pre-process it on the way

- RailXplore APM application
- Edge & Cloud computing digital application
- Make the most out of your data

Benefits of RailXplore APM



Key Functionalities

Asset Health Status

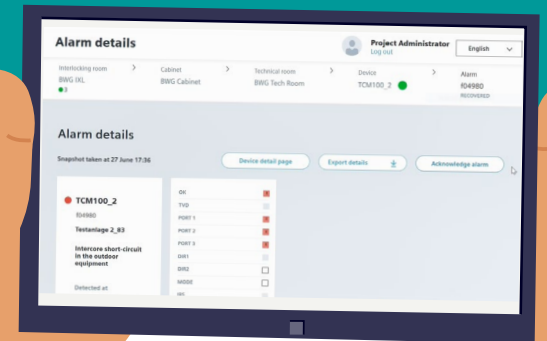
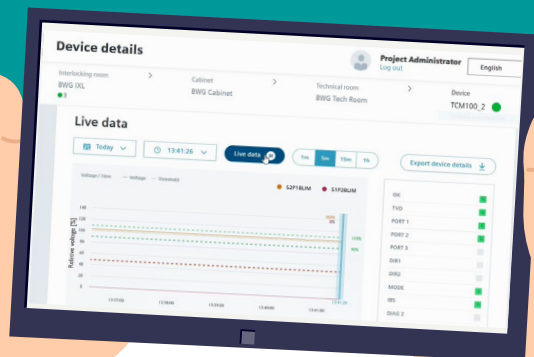
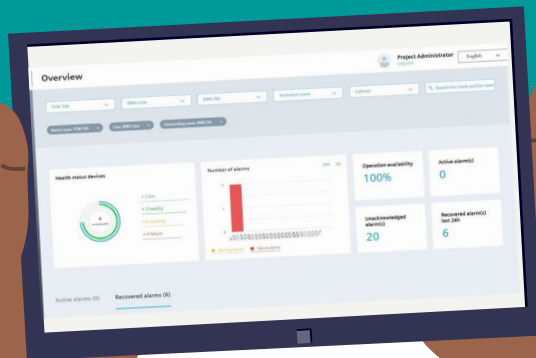
- Status of the complete system
- Boosting the operations and maintenance decision-making
- Ease the operator and maintenance communication
- Remote monitoring of asset conditions

Device Analytics

- Ensure fast root cause and troubleshooting process
- Reduce the mean-time-to-repair
- Facilitate the record analysis and patterns
- Automate root cause analysis

Maintenance Alarms

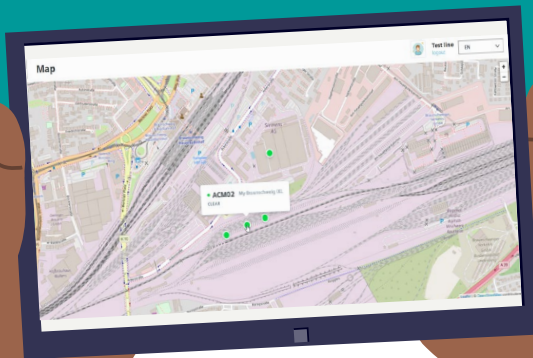
- Prioritized maintenance alarms
- Ease the corrective maintenance
- Out-of-the-norm alarms detection
- Reduce on-site track inspections



Key Functionalities

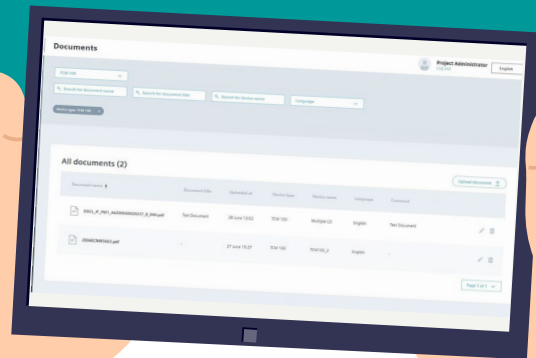
Dynamic Map

- Location and accessibility
- Asset health status at a glance
- Asset information at any time and place
- Optimizing the troubleshooting planification



Line Documents

- Always up-to-date line documentation
- All the asset documentation available
- Configurable specific-project documentation
- Readable online on-site / protocols



System Architecture

➤ Data sources

Signaling assets

- Clearguard ACM200/250
- Clearguard XCM300
- Clearguard TCM100

OT servers

- SCADA
- HMI
- PLCs
- RTUs

➤ System connectivity

CoreShield Connect

Data collector

CoreShield DCU

Secured connectivity

➤ Data processing

RailXplore APM advanced analytics

Kafka, MQTT, AVRO

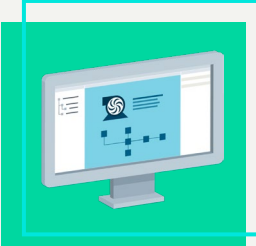
Data Management
TimeScaleDB
InfluxDB

Edge application

Cloud-based application

Powered by Railigent X

➤ Output front end



References

RailXplore APM monitors a segment of a metro line in Antwerp city since 2018.

Since 2019, **RailXplore APM** monitors Siemens TCM100 track circuit in Spain as a proof-of-concept as well as in China for the track vacancy detection system ACM200.

More main line and mass transit projects are requesting **RailXplore APM**:

- Guangzhou Line 1
- Milan Line 2
- Singapore Jurong Line



| Contact

Daniel Sánchez Perez

Product Lifecycle Manager

Siemens Mobility GmbH

SMO RI PR GPM-CI

Ackerstr. 22

38126 Braunschweig

Germany

Mobile: +49 162 7895274

E-mail: daniel.sanchez_perez@siemens.com

Disclaimer

© Siemens 2022

Subject to changes and errors. The information given in this document only contains general descriptions and/or performance features which may not always specifically reflect those described, or which may undergo modification in the course of further development of the products. The requested performance features are binding only when they are expressly agreed upon in the concluded contract.

All product designations may be trademarks or other rights of Siemens AG, its affiliated companies or other companies whose use by third parties for their own purposes could violate the rights of the respective owner.