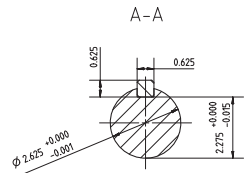
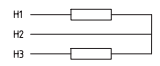
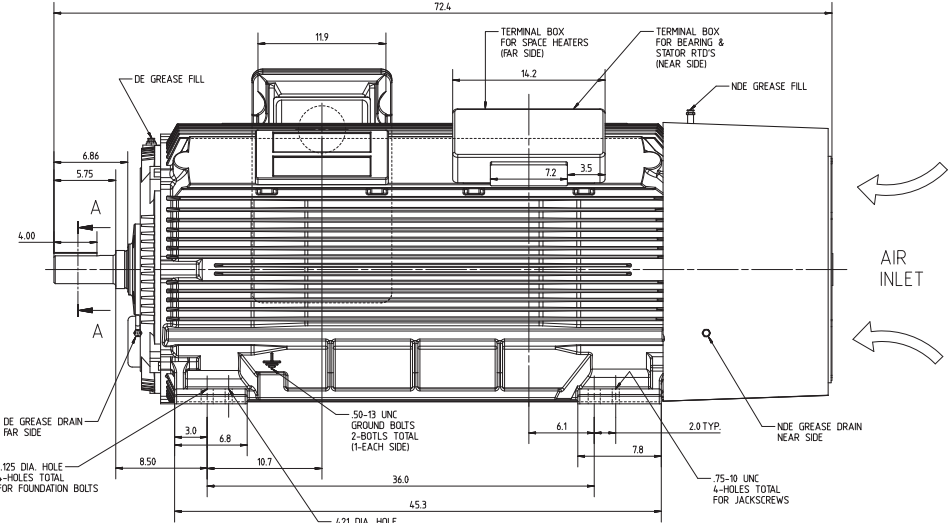
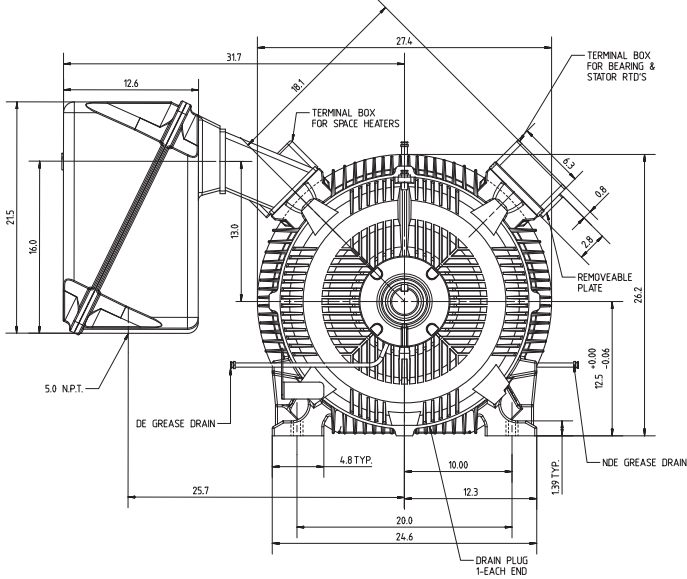


- NOTES:
1. MAIN CONDUIT BOX MAY BE ROTATED IN STEPS OF 90°. THE MAIN CONDUIT SPACER MAY BE ROTATED IN STEPS OF 180°. A GROUND LUG IS PROVIDED INSIDE THE MAIN TERMINAL BOX.
 2. NON-DRIVE END BEARING IS INSULATED. INSULATE ANY CONNECTIONS TO THIS BEARING. BOTH BEARINGS CAN BE INSULATED AS AN OPTION.
 3. BEARINGS SPECIFIED:
 - (STANDARD BALL, INSULATED) NON DRIVE END: 6218 (ASE30107649)
 - (STANDARD BALL, NON-INSULATED) DRIVE END: 6218 (90B302023)
 - (OPTIONAL BALL, INSULATED) DRIVE END: 6218 (ASE30107649)
 4. FOR RELUBRICATION OF BEARINGS, SEE LUBRICATION PLATE ON MOTOR.
 5. FOR SAFETY PROCEDURES AND ALIGNMENT REQUIREMENTS, SEE INSTRUCTION MANUAL.
 6. SEE ROTATION PLATE ON MOTOR FOR DIRECTION OF ROTATION. DIRECTION OF ROTATION IS VIEWED FROM THE DRIVE END.



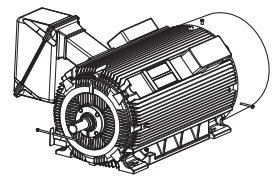
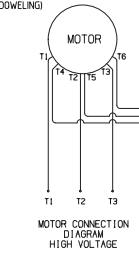
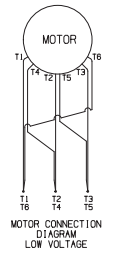
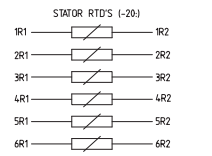
Equipment Weight (lbs.)						
Frame	Speed	Base Motor w/CI2 Box & Spacer	LN Fan Housing	CI2 Box	FS15 Box	Spacer
5011	2 Pole	4375	200	100	220	25
						50



TERMINAL BOARD ARRANGEMENTS IN AUXILIARY BOX FOR SPACE HEATER (200 W)			
CONNECTION OPTIONS	120 VOLTS	240 VOLTS	
Terminal No.	Destination/Item Designation	Destination/Item Designation	
1	A H1	H1	
	B H3		
2	A H2	H3	
	B		
3	A	H2	
	B		
4	A		
	B		
PE	B		

TERMINAL BOARD ARRANGEMENT IN AUXILIARY BOX FOR BEARING & STATOR RTD'S		
Terminal No.	Destination/Item Designation	
PE		
1	-20-R1	
2	-20-R2	
3	-20-2R1	
4	-20-2R2	
5	-20-3R1	
6	-20-3R2	
7	-20-4R1	
8	-20-4R2	
9	-20-5R1	
10	-20-5R2	
11	-20-6R1	
12	-20-6R2	
13	-30-R1	
14	-30-R2	
15	-30-2R1	
16	-30-2R2	
PE		

RTD ALARM / SHUTDOWN DATA		
	ALARM	SHUTDOWN
BEARING	100 °C	105 °C
STATOR	155 °C	170 °C



▲ SHEET 1 UPDATED NOTE #2 & ADDED NOTE #3
 SHEET 2 SEE SHEET 2

CERTIFIED PRINT				
CUSTOMER INITIATED CHANGES MAY AFFECT PRICE AND DELIVERY PRODUCTION WILL PROCEED ON THE BASIS OF THIS DRAWING				
FRAME	TYPE	VOLTS	PH	HZ
5011	FLAS	2300/4000	3	60

Revision	Author	Checked	Appr	Date
1	Author	Checked	Appr	DATE

Title: OUTLINE_1143_H_5011_2_AF_P1_C01
 Date: 2020-05-19
 Project: 1143_H_5011_2_AF_P1_C01
 Sheet: 1 of 2

SIEMENS
 2015-2021

