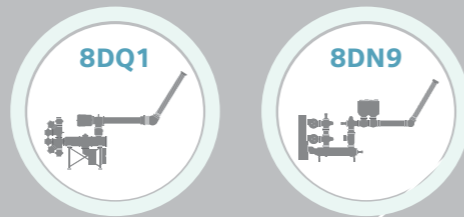


First substations for Siemens Megaproject in Egypt ready for operation

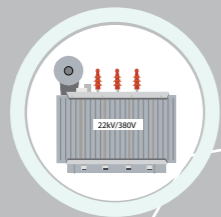
Six substations to transmit the electricity generated by Beni Suef and Burullus power plant. This includes:

001001010111001010
101010111010011010

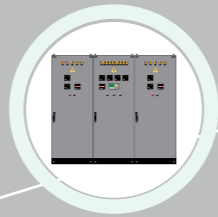
Gas-insulated switchgears



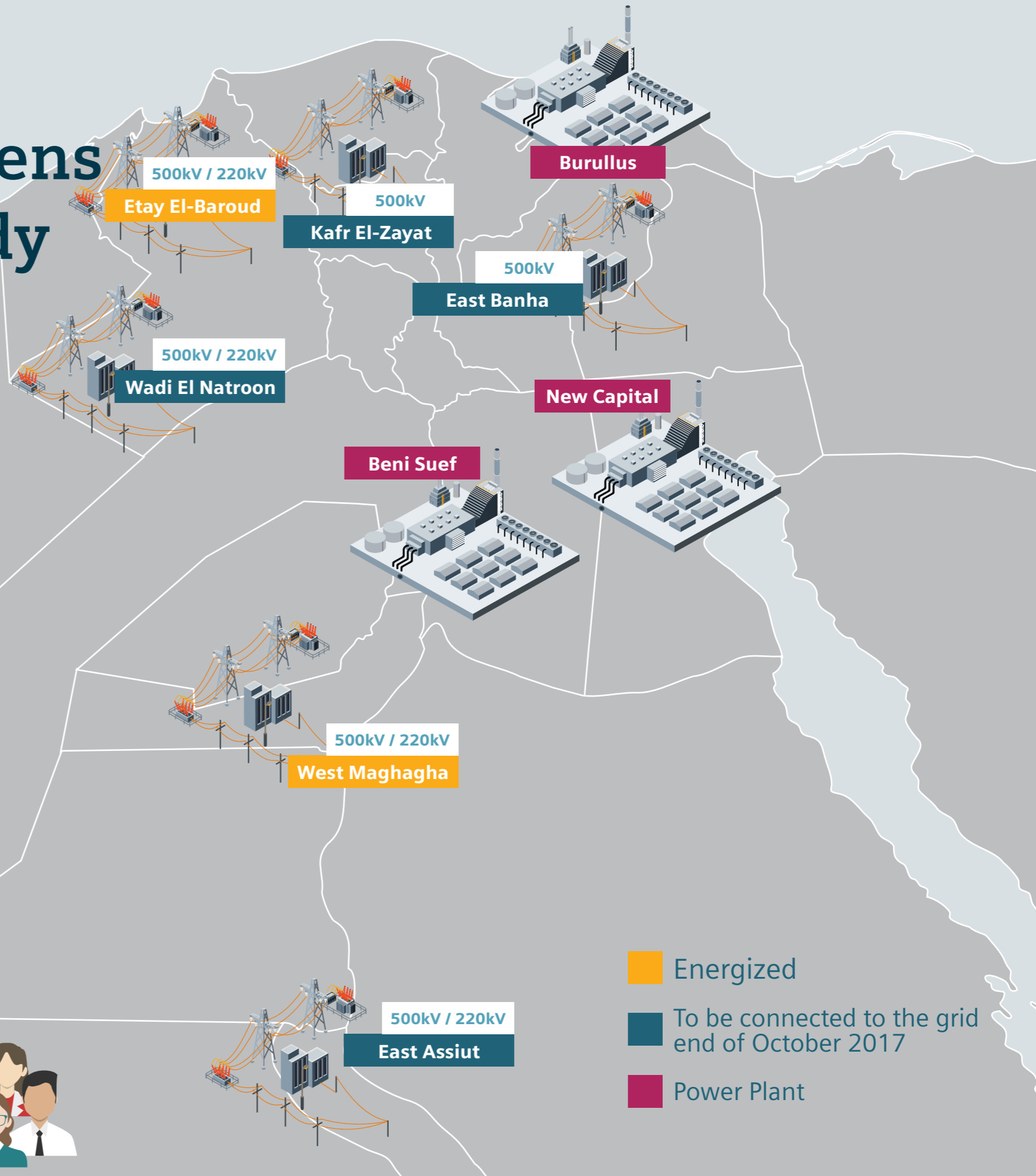
Transformers



Control and protection equipment



1st two energized substations will help cover the electricity needs of more than **10 million Egyptians**¹



- Energized
- To be connected to the grid end of October 2017
- Power Plant

¹ Based on the assumption that these substations will be working at full load of 2500 megawatts (MW) per year