



Depot and fleet load optimization

Fleet operators face a massive planning and analytical challenge as they electrify their vehicles. Companies need to know how to manage electric vehicle charging requirements, minimize costs, and rapidly deploy in the face of utility interconnection delays. Also, companies need to understand how to retain flexibility to meet changing business needs and evolving technology.

Siemens simulation electric vehicle fleet management software solution allows you to manage your EV fleet charging operations.

Load Management for reducing grid connection cost and time:

Load shaving or load sharing

Smart charging

Load Management for reducing energy and power costs:

Load shifting and smart charging

Demand charges

Types of load management:

First-in-first out

SPLIT

Round Robin

Load management through Smart Charging is a key tool for any depot operator. It can be used to reduce both capital expenditure and operating costs which is essential for the long-term success for eMobility depots business case.

How to do this

1

Group chargers into a control group

2

Assign a maximum power profile to the charger group

3

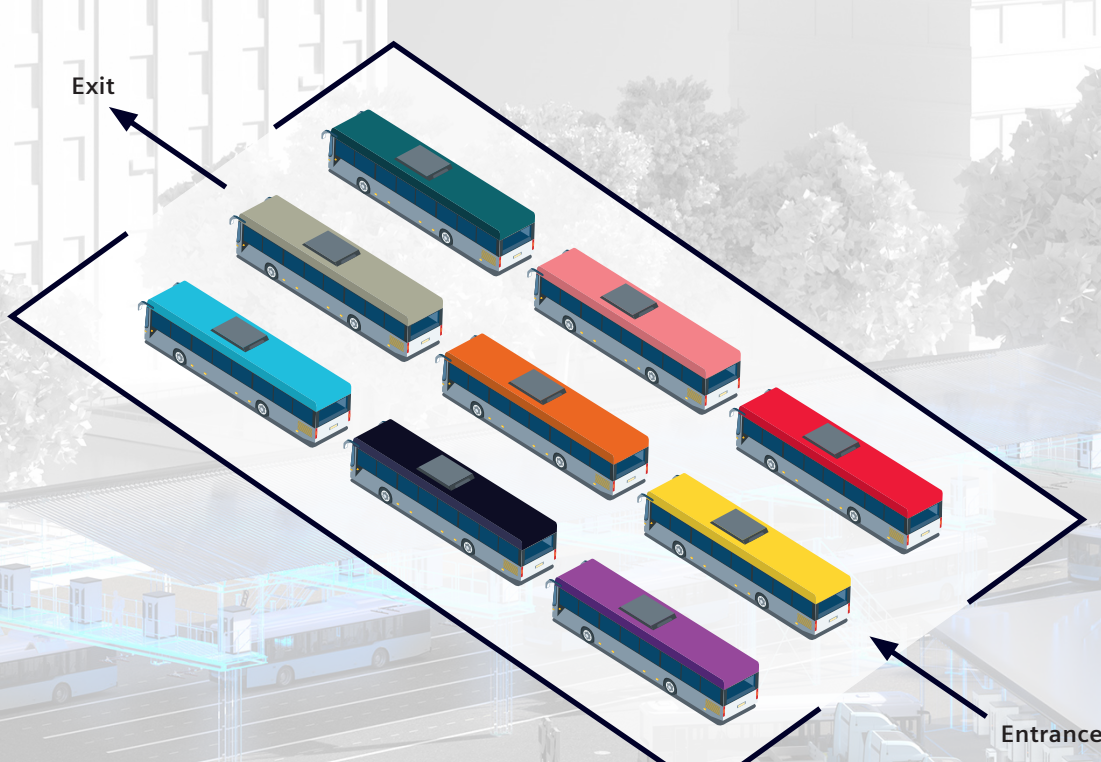
Assign a prioritization logic (FIFO or FILO or...)

4

Press GO

5

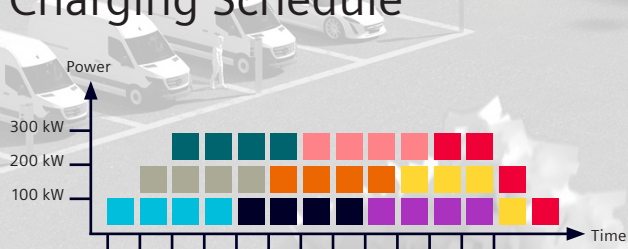
DepotFinity controls the chargers to keep the total power below the assigned power profile



Uncontrolled Charging Schedule



First-In-First Out Charging Schedule



Plug-in Schedule

