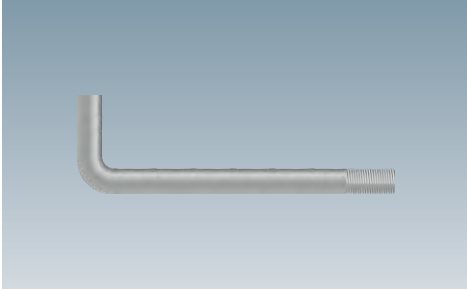
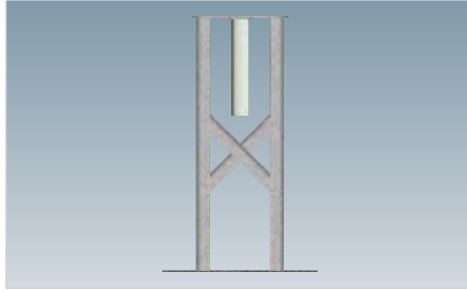


# Foundation Products



Anchor Bolts - Poured In Ground

D1 - D4



Structural Foundations

D5 - D12





## Anchor Bolts

Poured In Ground

### Overview



*Model A131702 Anchor Bolt shown for reference purposes only!  
Actual unit selected may vary in mounting and features.*

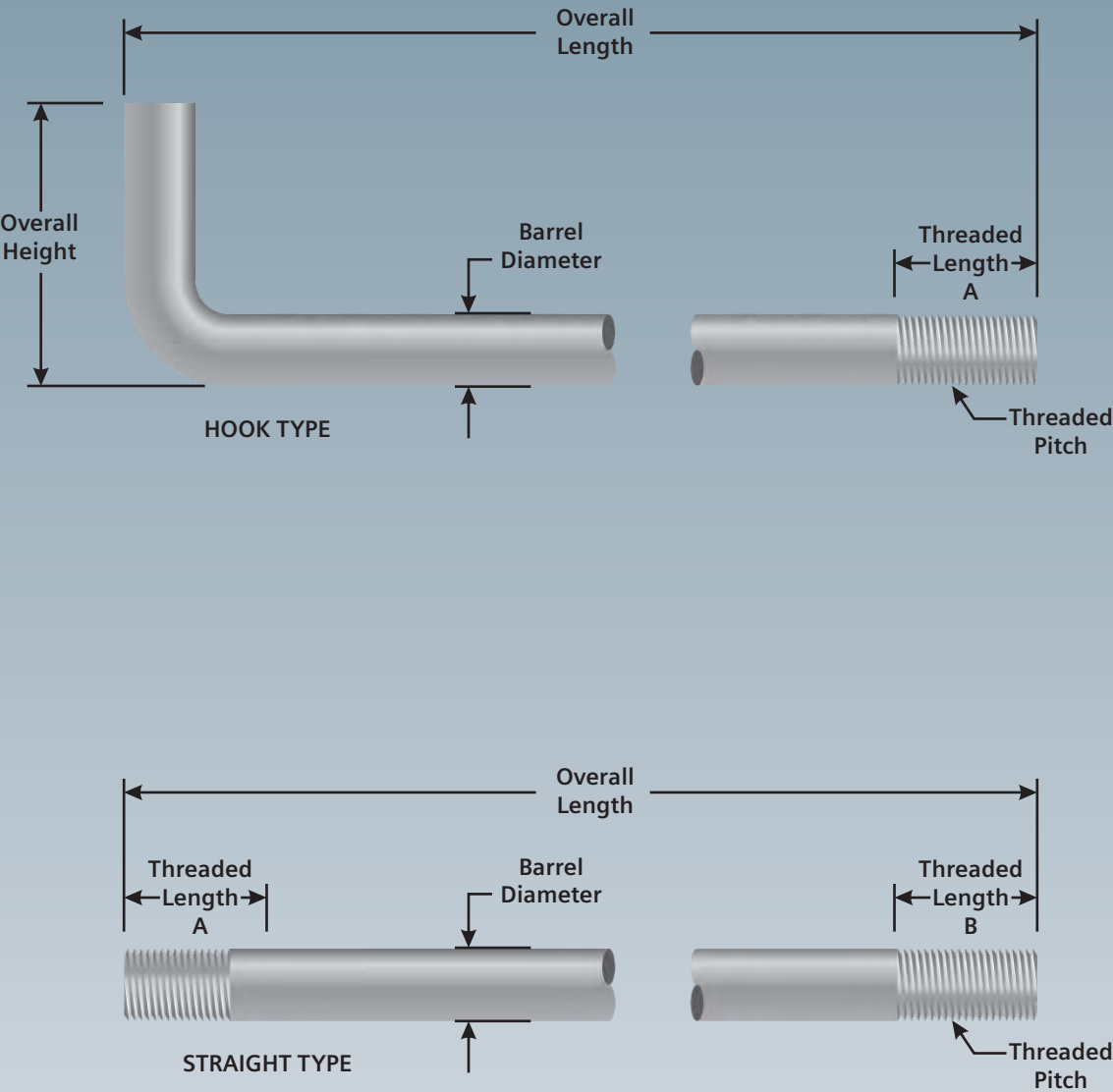
**SIEMENS** Anchor Bolts are of steel construction, galvanized to help prevent corrosion. All assemblies listed include one galvanized steel wrought washer and hex nut.

SIEMENS Part Number	Overall Length	Overall Height	Threaded Length A	Threaded Pitch	Barrel Diameter	Weight	Foundation Products
NYK:131702-4X	9 in (22.86 cm)	4 1/4 in (10.80 cm)	3 in (7.62 cm)	3/4-10	3/4 in (1.91 cm)	0.7 lbs (0.32 kgs)	
NYK:131702-18X	9 1/2 in (24.13 cm)	4 in (10.16 cm)	3 in (7.62 cm)	3/4-10	3/4 in (1.97 cm)	0.6 lbs (0.27 kgs)	
NYK:131702-1X	12 in (30.48 cm)	4 1/4 in (10.80 cm)	3 in (7.62 cm)	1/2-13	1/2 in (1.27 cm)	1.2 lbs (0.54 kgs)	
NYK:131702-2X	12 in (30.48 cm)	4 1/4 in (10.80 cm)	3 in (7.62 cm)	3/4-10	3/4 in (1.97 cm)	1.4 lbs (0.64 kgs)	
NYK:131702-3X	12 in (30.48 cm)	4 1/4 in (10.80 cm)	3 in (7.62 cm)	1-8	1 in (2.54 cm)	1.8 lbs (0.82 kgs)	
NYK:131702-6X	16 in (40.64 cm)	4 3/8 in (10.80 cm)	3 in (7.62 cm)	3/4-10	3/4 in (1.97 cm)	1.8 lbs (0.82 kgs)	
NYK:131702-7X	16 in (40.64 cm)	4 3/8 in (10.80 cm)	3 in (7.62 cm)	1-8	1 in (2.54 cm)	2.0 lbs (0.91 kgs)	
NYK:131702-15X	18 in (25.72 cm)	4 in (10.16 cm)	3 in (7.62 cm)	3/4-10	3/4 in (1.97 cm)	2.0 lbs (0.91 kgs)	
NYK:131702-10X	20 in (50.80 cm)	4 in (10.16 cm)	1 1/2 in (3.81 cm)	1/2-13	1/2 in (1.27 cm)	1.8 lbs (0.82 kgs)	
NYK:131702-14X	24 in (60.96 cm)	4 in (10.16 cm)	3 in (7.62 cm)	3/4-10	3/4 in (1.97 cm)	2.2 lbs (0.99 kgs)	
NYK:131702-26X	36 in (91.44 cm)	5 3/8 in (13.67 cm)	5 1/2 in (13.97 cm)	1-8	1 in (2.54 cm)	3.6 lbs (1.63 kgs)	
NYK:131702-19X	36 in (91.44 cm)	4 in (10.16 cm)	2 in (5.08 cm)	1 1/4-7	1 1/4 in (3.15 cm)	3.2 lbs (1.45 kgs)	
NYK:131702-11X	42 in (106.68 cm)	4 in (10.16 cm)	2 in (5.08 cm)	1 1/4-7	1 1/4 in (3.15 cm)	3.6 lbs (1.63 kgs)	
NYK:131702-48X	42 in (106.68 cm)	6 in (15.24 cm)	6 1/2 in (16.51 cm)	1 1/2-6	1 1/2 in (3.81 cm)	4.2 lbs (1.91 kgs)	
NYK:131702-96X	54 in (137.16 cm)	6 in (15.24 cm)	6 1/2 in (16.51 cm)	1 1/2-6	1 1/2 in (3.81 cm)	5.5 lbs (2.49 kgs)	
NYK:131702-16X	60 in (152.40 cm)	4 in (10.16 cm)	2 in (5.08 cm)	1-8	1 in (2.54 cm)	4.2 lbs (1.91 kgs)	
NYK:131702-13X	60 in (152.40 cm)	6 in (15.24 cm)	5 1/2 in (13.97 cm)	1-8	1 in (2.54 cm)	6.2 lbs (2.81 kgs)	
NYK:131702-22X	74 in (187.96 cm)	6 3/8 in (16.21 cm)	3 1/2 in (8.89 cm)	1 1/4-7	1 1/4 in (3.15 cm)	5.5 lbs (2.49 kgs)	
NYK:131702-23X	74 in (187.96 cm)	6 3/8 in (16.21 cm)	8 in (20.32 cm)	1 1/4-7	1 1/4 in (3.15 cm)	11.2 lbs (5.08 kgs)	
NYK:131702-21X	87 in (220.98 cm)	4 in (10.16 cm)	2 in (5.08 cm)	1 1/4-7	1 1/4 in (3.15 cm)	8.4 lbs (3.81 kgs)	
NYK:131702-20X	120 in (304.80 cm)	6 in (15.24 cm)	5 1/2 in (13.97 cm)	1-8	1 in (2.54 cm)	12.2 lbs (5.5 kgs)	

Anchor Bolts - Poured In Ground  
Straight Type Anchor Bolts

Foundation Products	SIEMENS Part Number	Overall Length	Threaded Length A	Threaded Length B	Threaded Pitch	Barrel Diameter	Weight
	NYK:131702-4X	45 1/4 in (114.94 cm)	2 1/4 in (5.72 cm)	1 in (2.54 cm)	1-8	1 in (2.54 cm)	4.2 lbs (1.91 kgs)
	NYK:131702-18X	57 1/4 in (145.42 cm)	2 1/4 in (5.72 cm)	1 in (2.54 cm)	1-8	1 in (2.54 cm)	5.6 lbs (2.54 kgs)
	NYK:131702-1X	69 1/4 in (175.90 cm)	2 1/4 in (5.72 cm)	1 in (2.54 cm)	1/2-13	1/2 in (1.27 cm)	6.6 lbs (2.99 kgs)
	NYK:131702-3X	81 1/4 in (206.38 cm)	2 1/4 in (5.72 cm)	1 in (2.54 cm)	1-8	1 in (2.54 cm)	7.4 lbs (3.36 kgs)

Applicable for all Anchor Bolts - Poured in Ground

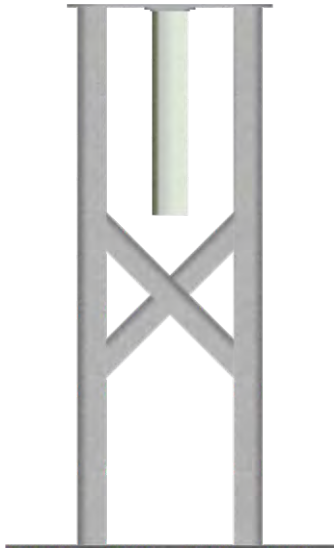






## Foundations Structural

### Overview



*Model A035903 Structural Foundation - Square Type  
shown for reference purposes only!  
Actual unit selected may vary in mounting and features.*

**SIEMENS** Structural foundations are constructed of 2 1/2" X 2 1/2" x 1/4" steel angle and 1/4" inch steel plate welded together, then galvanize finished for durability.

Wayside signal foundations have 3/4"-10 X 2 3/4" long mounting bolts and will accommodate 8" X 8", 6 3/4" X 6-3/4" and 6" X 8" inch bolt spacings.

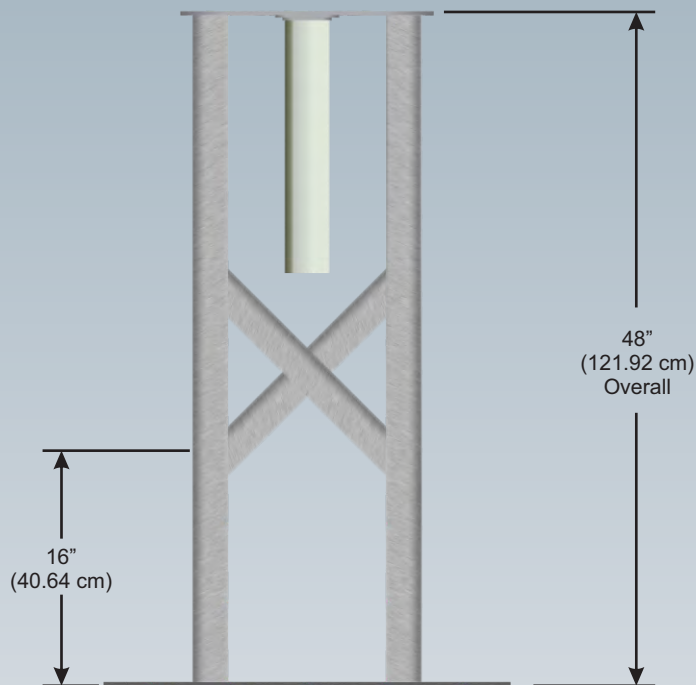
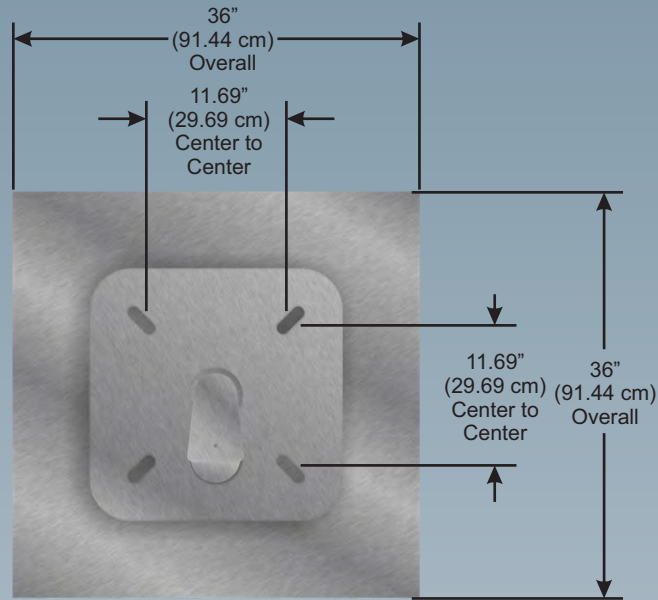
Flashing Light Signal foundations have 3/4"-10 X 2 3/4" long mounting bolts and will accommodate 9 1/2" X 9 1/2" and 11 11/16" X 11 11/16" inch bolt spacings.

Also, they are equipped with cable riser assemblies which provide a protective wire chase to either the split or junction box type base.

**SIEMENS**  
Part Number

NYK:035903-911-1X

Foundation Products

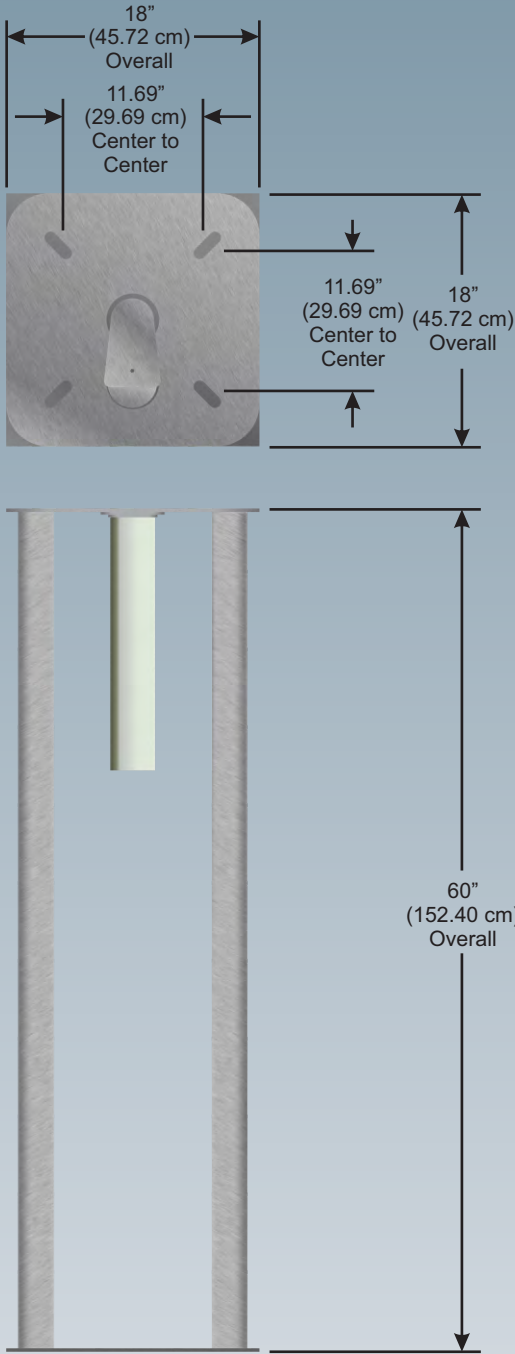


**Pier Foundation 48" (121.92 cm) Tall w/ Riser**

- Weight is approx. 155.0 lbs. (70.31 kgs.)
- Sturdy steel construction
- (1) 035908-1X Cable riser assembly



<b>SIEMENS</b> Part Number	NYK:035903-911-3X	
-------------------------------	-------------------	--

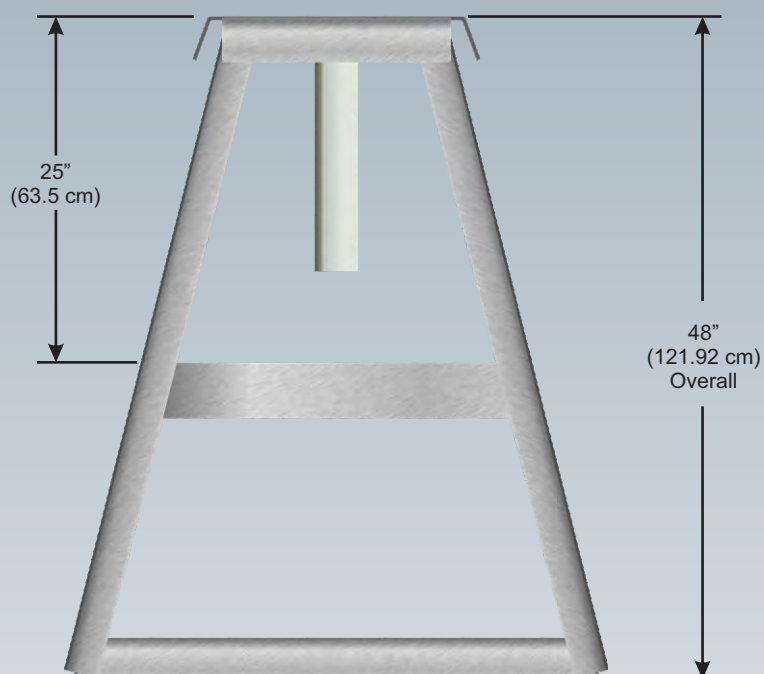
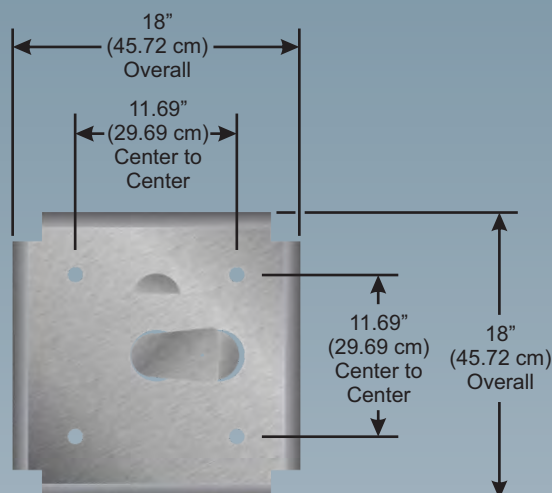


- Pier Foundation 60" (152.40 cm) Tall w/ Riser**
- Weight is approx. 240.0 lbs. (108.86 kgs.)
  - Sturdy steel construction
  - (1) 035908-1X Cable riser assembly

**SIEMENS**  
Part Number

NYK:035903-200X

Foundation Products

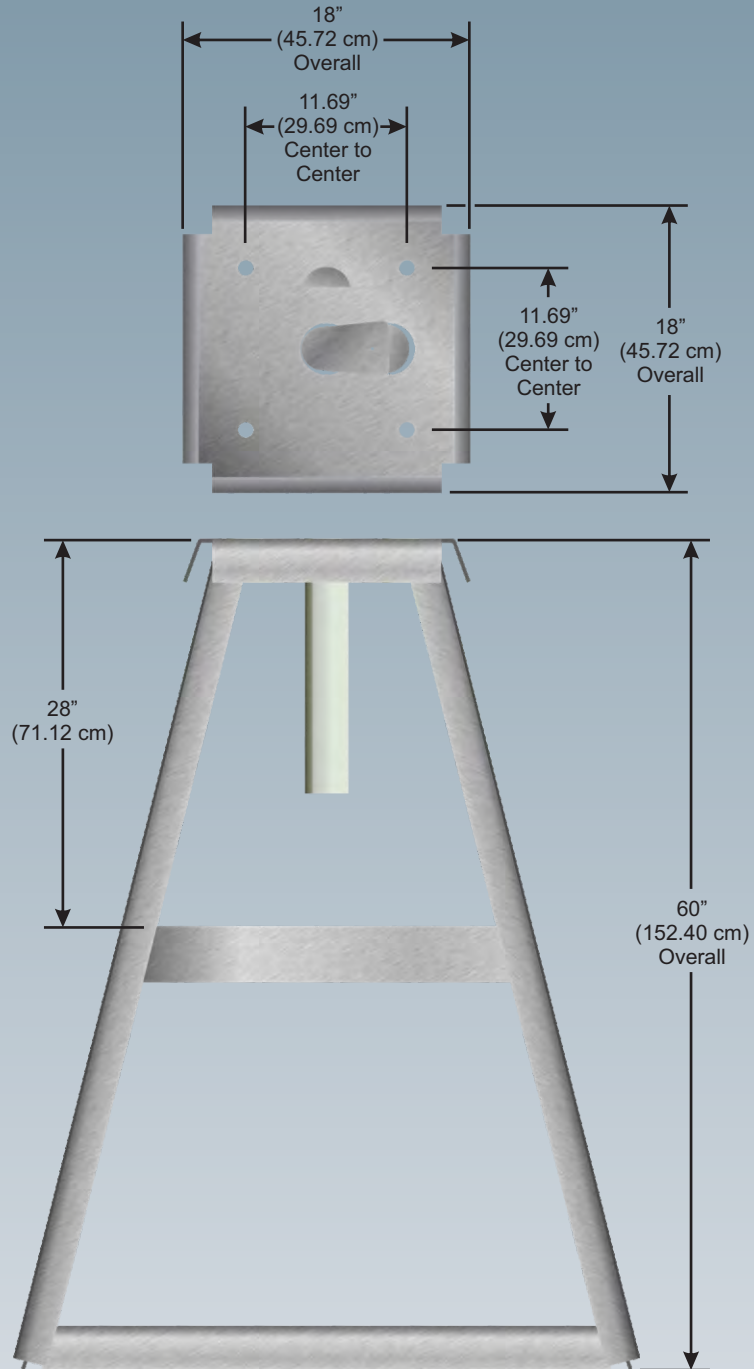


**Pyramid Foundation 48" (121.92 cm) Tall w/ Riser**

- Weight is approx. 215.0 lbs. (97.52 kgs.)
- Sturdy steel construction
- (1) 035908-1X Cable riser assembly

**SIEMENS**  
Part Number

NYK:035903-500X

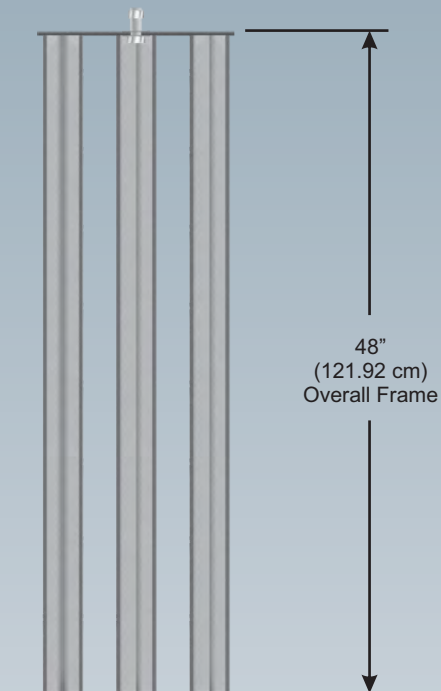
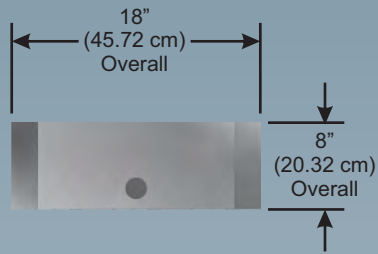


**Pyramid Foundation 60" (152.40 cm) Tall w/ Riser**

- Weight is approx. 250.0 lbs. (113.40 kgs.)
- Sturdy steel construction
- (1) 035908-1X Cable riser assembly

**SIEMENS**  
Part Number

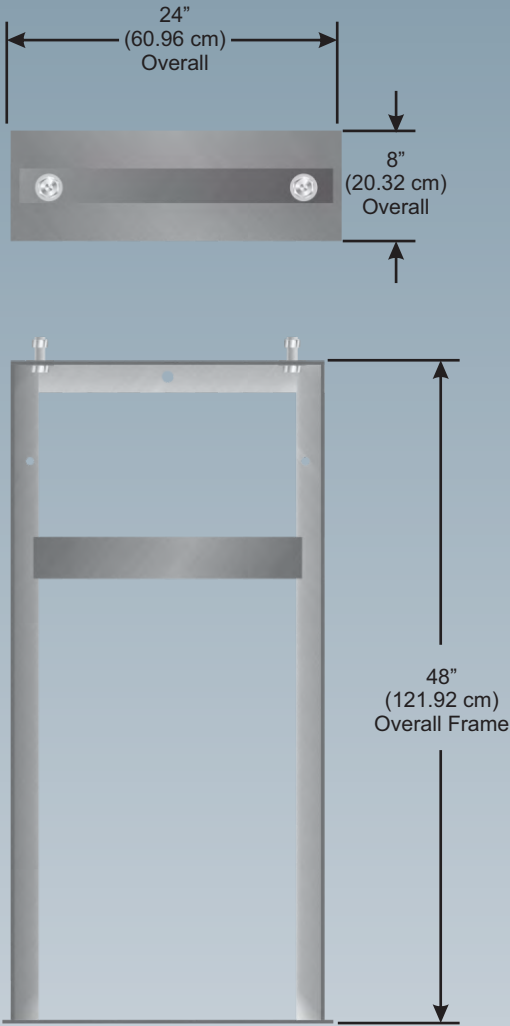
NYK:035800-2X



**Triangle Pier Foundation 48" (121.92 cm) Tall**

- Weight is approx. 60.0 lbs. (27.22 kgs.)
- Sturdy steel construction

SIEMENS Part Number	NYK:035900-X	
------------------------	--------------	--



**Block Pier Foundation 48" (121.92 cm) Tall**

- Weight is approx. 124.0 lbs. (56.25 kgs.)
- Sturdy steel construction

