

# IC4

## Configurator and emulator

[siemens.co.uk/traffic](http://siemens.co.uk/traffic)

The IC4 configurator is an easy to use tool for generating configuration data sets for the whole range of Siemens' high performance traffic and pedestrian controllers. Coupled with the optional emulator facility, it provides an effective solution to the configuration needs of both experienced and novice traffic engineers.

### IC4 configurator

IC4 is a Windows-based system providing advanced features for the entry and validation of data required to configure the ST700, ST750, ST800, ST900 and ST950 controllers.

Data is entered via a series of forms and is validated for correctness as part of a sophisticated error-checking process. Enhanced navigation aids and selectable levels of configuration complexity insulate the user from controller facilities that are not being used, simplifying the configuration process.

User-generated templates may be set up with user-specific data, e.g. particular handset range limits or special conditioning features. A new configuration may be based on these templates and any number of templates may be created.

The data generated by the system is stored in the controller, along with the IC4 source data, ensuring it can never be lost. For ST700 through to ST900 controllers the data is held in a configuration PROM and IC4 provides support for all necessary PROM blowing activities.

For the ST950 configuration data is held in a Memory card and IC4 creates the necessary files which may be transferred to the controller directly via a PC or via a standard USB memory stick.

Often, the management of configuration changes made on-street poses major problems for many users. The IC4 system has a 'view differences' option, which enables these changes to be automatically incorporated within the controller configuration file. They can then either be saved for future reference or re-downloaded to the controller as a new configuration.

### IC4 configurator

- Simple to install and easy to use
- Context-sensitive online help
- Selectable levels of complexity to aid less frequent users
- IC4 data file held within the controller for added data security
- Automated management of handset changes made on-street

### IC4 emulator

- Links seamlessly with IC4 configuration data
- Advanced emulation of up to eight linked controllers, on a single PC
- Easy to understand representation of on-street equipment
- Operation runs in real time and up to 60 x real time
- Controller 'single step' option
- Full handset and manual panel functionality

## IC4 emulator

The optional emulator is a feature-rich tool, which links seamlessly with IC4 to provide an advanced environment for debugging and proving of Siemens controller configurations. Using the same software source files as the controller firmware, it ensures an accurate representation of the controller operation on a PC.

Up to eight linked controllers may be emulated concurrently on a single PC, and any physical or time-based linking between them may be set up and fully exercised within the emulator.

Extensive automated input simulation is available, allowing patterns of loop and pushbutton activations to be pre-programmed and executed with ease, under the control of the 'Simulation Manager' tool.

The traffic engineer is able to program the status display to show multiple controllers if required, with a sophisticated time line that enables easy understanding of how a particular configuration will operate on-street.

Controller emulation may be run in real time or up to 60 times faster than real time, so that extensive testing over long periods may be undertaken quickly. Controller data may be logged and subsequently reviewed to assist configuration validation. The user is also able to 'single step' the controller through each of its processing cycles, so that the performance of special conditioning and response to inputs, etc, can be readily observed and corrected if necessary.

Full handset and manual panel functionality are provided and these, coupled with the extensive configuration debugging aids and a user-programmable controller status display, provide the most efficient environment available for the proving of Siemens' controller configurations.

## Technical specification

### PC specification (minimum)

- Any PC with processor, memory and hard disk specifications appropriate to the operating system being used
- Serial or USB port required for PROM programmer connection
- An additional USB port required if ST950 data transfer to USB stick required
- Monitor with at 1024 x 768 pixel resolution, 256 colour

### Operating system

- Windows XP (32 bit), or Windows 7 (32 or 64 bit)

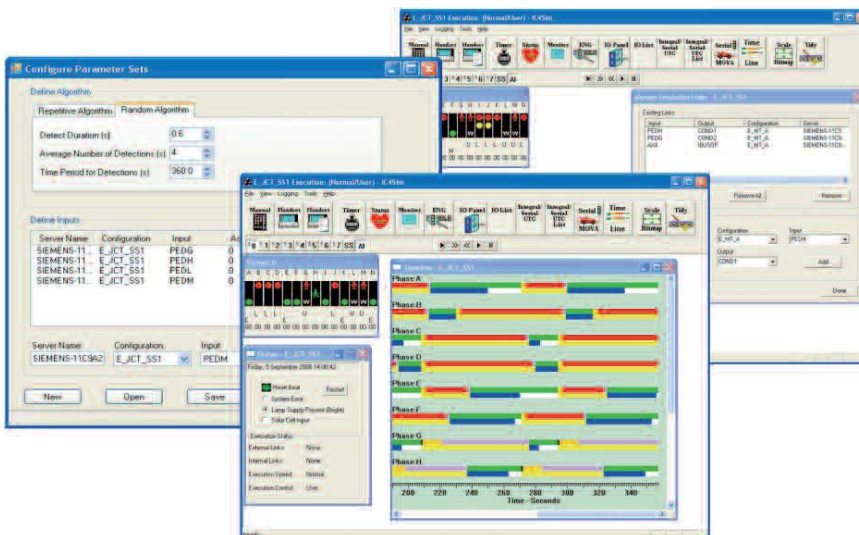
### Controllers configured

- Siemens ST700, ST750, ST800, ST900, ST950

### Import and upgrade capabilities

- IC3 Type 200 configurations (All firmware issues)
- IC3 Type 400 configurations (All firmware issues)
- Configuration upgrade from ST800 and ST900 to ST950 supported

Some facilities require re-configuration due to improved functionality provided by the later controllers.



## Siemens Infrastructure & Cities

### Traffic Solutions

Sopers Lane, Poole, Dorset, BH17 7ER

Tel: +44 (0) 1202 782000 Email: sales.stc@siemens.com

[siemens.co.uk/traffic](http://siemens.co.uk/traffic)

© Siemens 2013. All rights reserved.