

Controlguide® Iltis Web Services

Keeping an eye on Iltis everywhere and at any time

Efficient and location-independent situation analysis

Our Iltis Web Services enable you to display Iltis detail views, logging, and the message manager on any devices you choose and thus keep an eye on your operating situation everywhere and at any time. We have been successfully providing our view service (detail views) since the end of 2017, and now around 40% of Switzerland's private operators use this service through our cloud solutions.

For example, our Iltis Web Services allow you to use a standard internet browser on a tablet or smartphone to view your Iltis detail view 'live' or in 'replay' mode (going back up to 30 days), and analyze your operating situation no matter where you are.

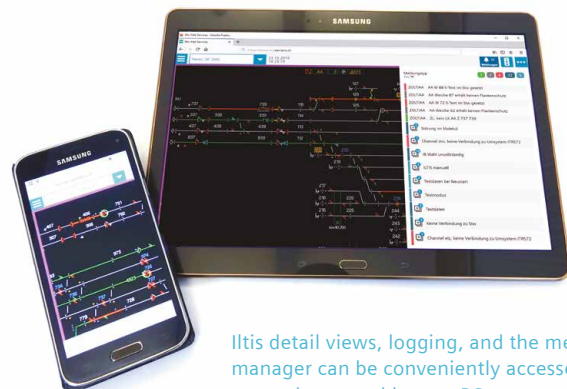
To ensure that access to this information is secure, you can create profiles with varying functionality and privileges in the user administration.

Our Iltis Web Services facilitate communication between maintenance and dispatcher and also enable efficient and location-independent analysis of operating situations.

Benefits of Iltis Web Services

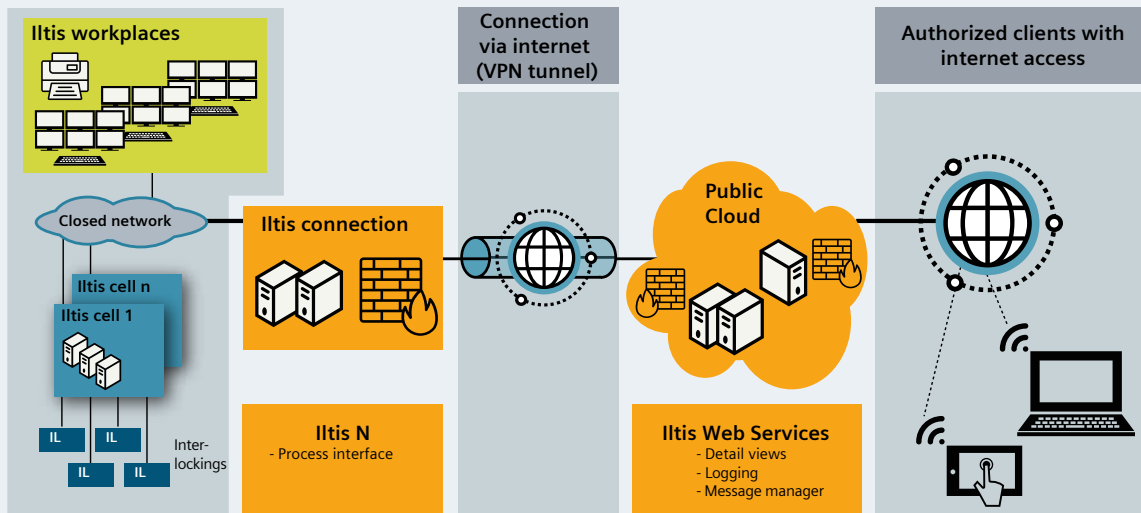
- Management support (quick overview of operating situation)
- Location-independent analysis of operating situation data from the past 30 days
- Improved failure detection enables speedy implementation of measures
- Analysis of unusual operating situations

- All users can access the relevant information at the right time and in the right place
- Support for service and standby staff
- Scalable in line with the company's growth
 - Easy account opening for new IWS users

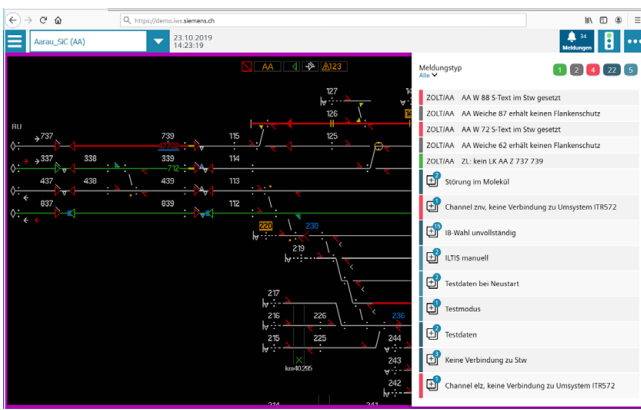


Iltis detail views, logging, and the message manager can be conveniently accessed on smartphones, tablets, or PCs.

Layout



To enable location-independent analysis of operating situations, we provide detail views, logging, and the message manager via a secure cloud.



Detail view service

The detail view service allows users to open detail views from Iltis networks in a normal web browser outside of the closed network.

Benefits of the detail view service

- Station-specific display of current operating situation
- Support for failure analysis using retrospective analysis of the detail views
- Recording and storage of video sequences
- Use for training purposes

Logging service

Logging enables detailed tracking of operations. Differentiated recording of a wide variety of information ensures the traceability of events and thus enables operational procedures to be constantly optimized.

Zelle	Station	Zeit	Informationen	Protokollklasse
ZSA	CHBAS	11:01:28.622	ES-003-Haupt. EKIR: CHBAS Remote-Kanal (1): gestört (-) / passiv (-) / aktiv (+).	System
ZSA		11:01:17.618	GATE-201-Passiv: Verbindungsunterbruch zu Rechner YCH19.	System
ZSA		11:01:17.618	GATE-201-Haupt: Verbindungsunterbruch zu Rechner YCH19.	System
ZSA		11:01:17.618	GATE-201-Passiv: Verbindungsunterbruch zu Rechner YCH18.	System
ZSA		11:01:17.618	GATE-201-Haupt: Verbindungsunterbruch zu Rechner YCH18.	System
ZSA		11:00:55.612	Intra-Rechner-Watchdog fehlt. für AF-Task PTS Funktion 2 im Iltis-Rechner 12.	System
ZSA		11:00:55.612	Intra-Rechner-Watchdog fehlt. für AF-Task PTS Funktion 1 im Iltis-Rechner 12.	System
ZSA	CHBAS	11:00:46.609	ES-003-Haupt. EKIR: CHBAS Remote-Kanal (1): gestört (-) / passiv (-) / aktiv (+).	System
ZSA		11:00:35.606	GATE-201-Passiv: Verbindungsunterbruch zu Rechner YCH19.	System
ZSA		11:00:35.606	GATE-201-Haupt: Verbindungsunterbruch zu Rechner YCH19.	System
ZSA		11:00:35.606	GATE-201-Passiv: Verbindungsunterbruch zu Rechner YCH18.	System
ZSA		11:00:35.606	GATE-201-Haupt: Verbindungsunterbruch zu Rechner YCH18.	System

Benefits of the logging service

- Analysis of different logging classes
- Filter options for logging reports
- Faults can be found faster and reported to service and standby staff

Message manager service

The following messages can be retrieved on smartphones, tablets, or PCs from Iltis Release 62 regardless of location:

- *Operating requests* – general requests to users to perform an operation
- *Operating messages* – general operating messages and acknowledgments from the railway service
- *Faults* – faults in rail components and facilities
- *System* – system messages/faults in Iltis hardware and software components
- *Maintenance*-related messages for maintenance of the control system

Benefits of the message manager service

- Detection of current conditions in outdoor installations or the interlocking
- Improved, targeted, and integrated display of information for maintenance (integration in the detail views service)

Siemens Mobility Ltd.

Hammerweg 1
8304 Wallisellen
Switzerland
Phone: +41 585 580 111

Order-No.: MOMM-B10199-00-76CH / 9106/320
Subject to change

© Siemens Mobility Ltd., August 2020