



| RailXplore Capacity



Reliable live data of passenger numbers in stations and trains to optimize the decision-making process of railway operators, reduce disruption, and improve the passenger experience.

RailXplore Capacity

Product Description

Railway operators often lack information on passenger volume and passenger behavior within their station and train network. **RailXplore Capacity** measures, analyzes and allows the visualization of the

quantity and movement of people in stations and on trains to improve the decision-making process and help our customers to adapt to the “new normal”.

The RailXplore Capacity application

- ✓ Measures quantity and movement of passengers in real-time
- ✓ Alerts about thresholds reached or triggered by special events
- ✓ Optimized reporting through historical data and statistics
- ✓ Demand responsive planning through forecasts



CCTV cameras

- Data collected from 3D cameras & CCTV



Rolling stock

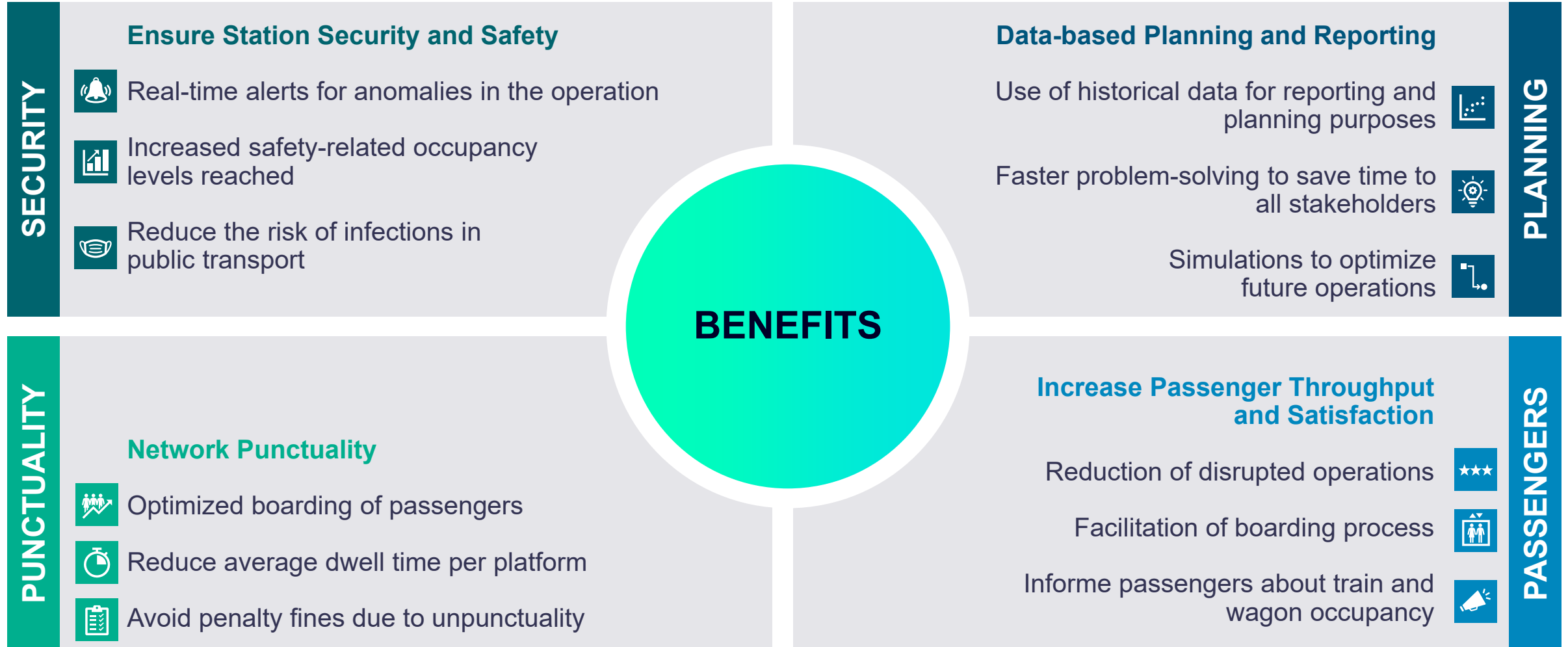
- Data collected from PDI (e.g., train occupancy, train weight)



External data

- Use of forecasting algorithm to predict future demands

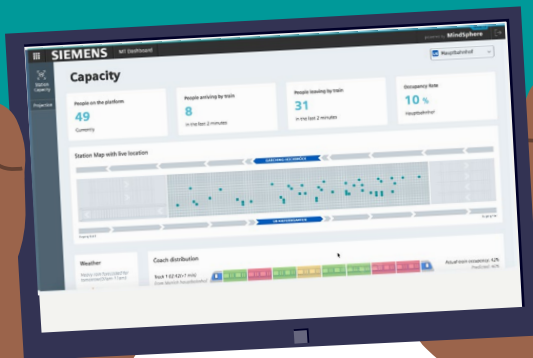
Benefits of RailXplore Capacity



Key Functionalities

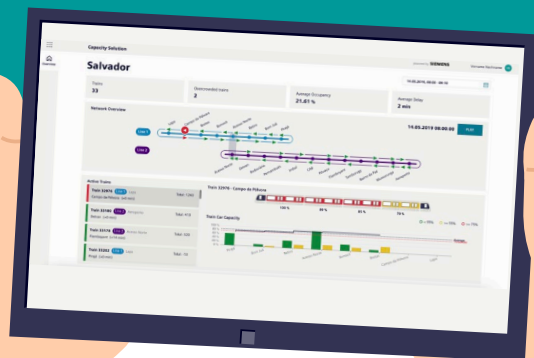
Station Occupancy

- Real-time, historical, and forecasted data about passenger numbers
- Distribution of passengers – movement analysis (heatmaps)
- Alert system: Safety-related occupancy levels, unusual crowding, and people on track



Train Occupancy

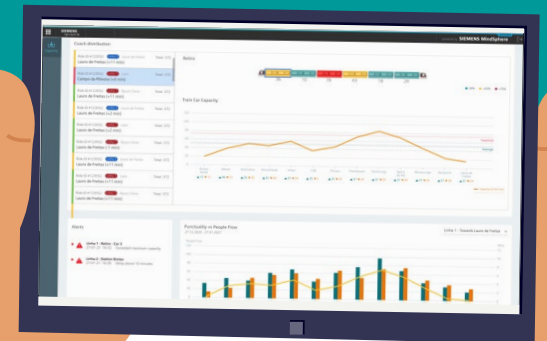
- Passenger counting in the vehicle
- Supporting the line operator with reliable data of train occupancy, position and delay
- Informing passengers via PIDS on platforms or passenger/ticketing apps



Data-based Planning

Based on forecasted demand:

- Reports about daily operations and special incidents
- Evaluation and adaptation of rental prices of ads and shops
- Planning of staff, train schedule, and more, based on forecasted passenger numbers
- Customized statistics to review daily operations or report about special events



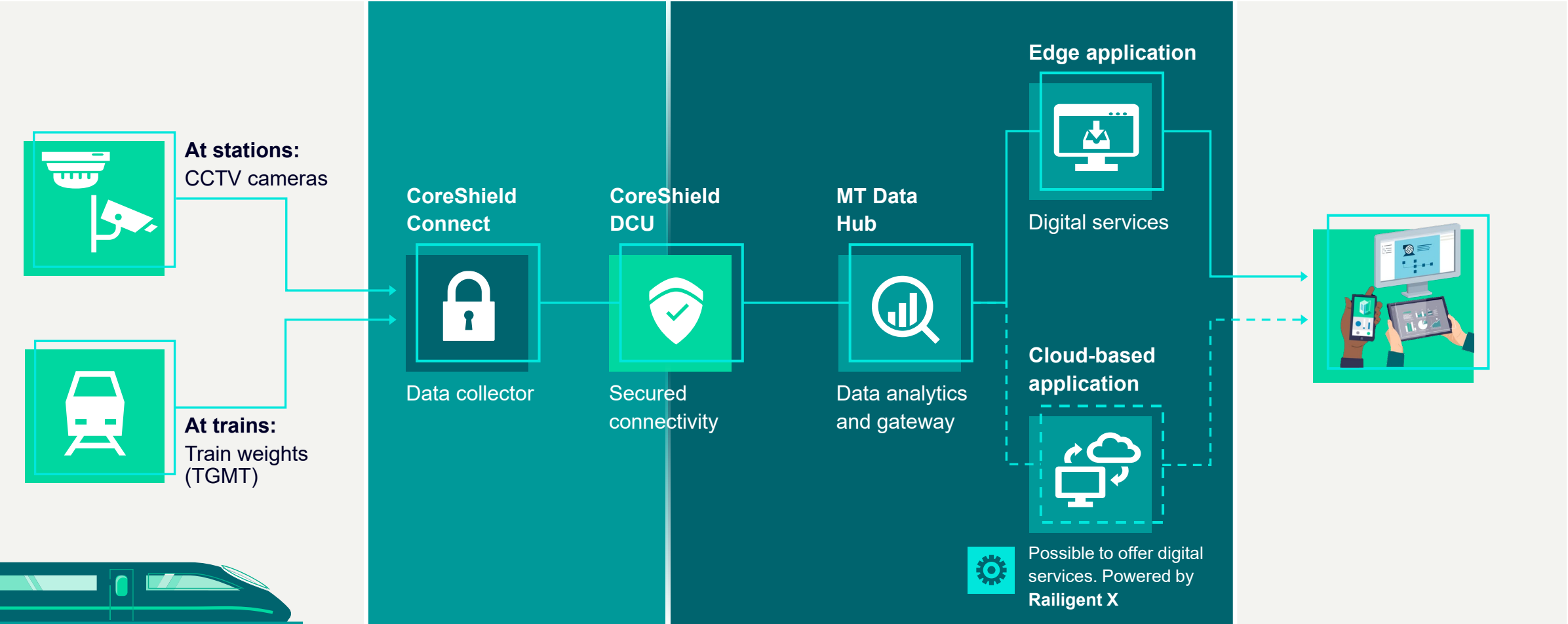
System Architecture

➤ Data sources

➤ System connectivity

➤ Data processing

➤ Output front end



References

ProRail ProRail – Capacity Management for operators
The Netherlands

RailXplore Capacity helped the customer to overview stations and improve operations, by giving them reliable data on passenger numbers and movements.

SW/M SWM – Security Monitoring in special events
Germany

Thanks to **RailXplore Capacity** it was possible to support station operators and handle security measures and ensure the safety of attendees and staff in major events, such as Oktoberfest and during Bayern Munich football matches.



| Contact

Theresa Pancini Fitzek

Product Lifecycle Manager

Siemens Mobility GmbH

SMO RI MT PDI DSI

Ackerstr. 22

38126 Braunschweig

Germany

Mobile: +49 173 6841395

E-mail: theresa.pancini_fitzek@siemens.com

Disclaimer

© Siemens 2022

Subject to changes and errors. The information given in this document only contains general descriptions and/or performance features which may not always specifically reflect those described, or which may undergo modification in the course of further development of the products. The requested performance features are binding only when they are expressly agreed upon in the concluded contract.

All product designations may be trademarks or other rights of Siemens AG, its affiliated companies or other companies whose use by third parties for their own purposes could violate the rights of the respective owner.