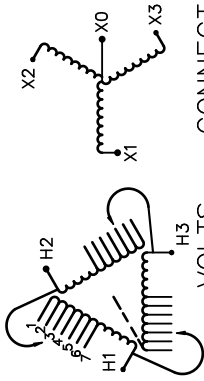



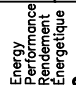


REVISION	DATE	BY	DATE	BY
		DRAWN	03/09/09	VG
		CHEK'D		
		VERIF'D		

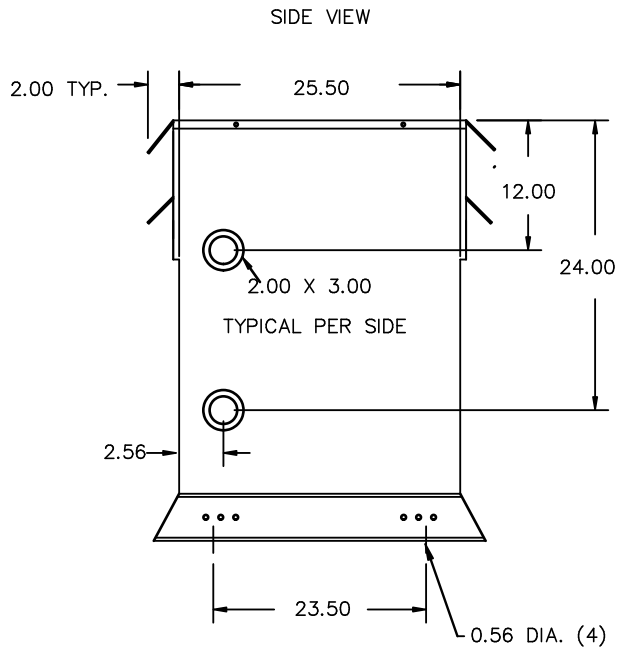
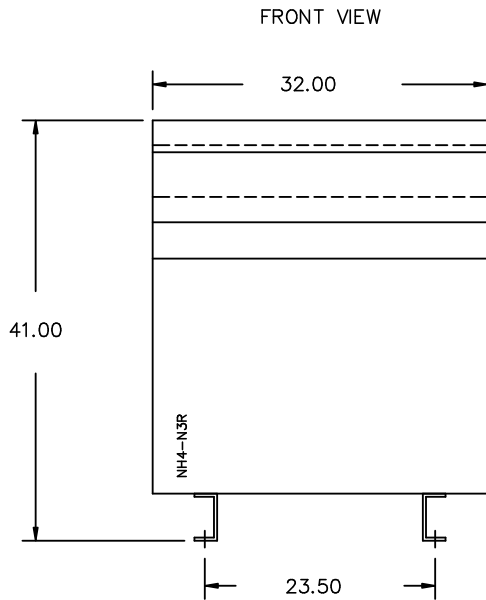
Confidential - Property of Siemens Industry, Inc. Building Technologies Division		
CUSTOMER		
ORDER NO.	DWG. NO.	
	3F3Y112FTP1	SH 1 OF 2

SIEMENS

CATALOG NO. 3F3Y112FTP1 SERIAL NO. 112.5 kVA 60 Hz 3 PHASE 5.5 % IMP AT 135 °C 115 °C RISE °C AVG. AMBIENT 220 °C TEMP CLASS °C MAX. AMBIENT PRIMARY (H1 H2 H3) 480V V SECONDARY(X0 X1 X2 X3) 208Y/120V V WINDING MATERIAL AL ENCLOSURE TYPE NEMA-3R WEIGHT 800 LBS ENERGY EFFICIENCY NEMA TP 1-2002	 VOLTS 504 492 480 468 456 444 432 CONNECT 1 2 3 4 5 6 7	<div style="display: flex; justify-content: space-between;"> <div style="text-align: center;">  <p>UL LISTED</p> </div> <div style="text-align: center;"> <p>DRY TYPE TRANSFORMER 77105 E112313</p> </div> <div style="text-align: center;">  <p>LR 3902</p> </div> </div> <p style="text-align: center;">TYPE K</p>
VERIFIED  VERIFIE 		SUITABLE FOR INDOOR OR OUTDOOR LOCATIONS BEFORE HANDLING, INSTALLING AND OPERATING, SEE INSTRUCTION MANUAL NEMA Class ANN Dry Type Transformer Siemens Industry, Inc. Norcross, GA dsu0082e



3F3Y112FTP1



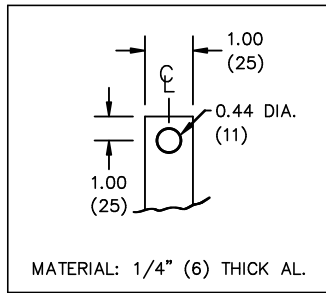
All Dimensions in inches

ENCLOSURE COLOR :ANSI 61 GREY – OUTDOOR

H.V.1. TERMINAL DETAIL

L.V.1. TERMINAL DETAIL

MECHANICAL TYPE LUGS INCLUDED
SUITABLE FOR 250MCM-6 CU/AL
CONDUCTORS
1 CONDUCTOR PER PHASE



CUSTOMER NOTES:

- HV1 TERMINATED AT TOP FRONT
- LV1 TERMINATED AT COIL FACE

Confidential – Property of
Siemens Industry, Inc.
Building Technologies Division

REVISION	DATE	BY	DATE	BY
			03/09/09	VG

CUSTOMER	
ORDER NO.	DWG. NO.
	3F3Y112FTP1