

SIEMENS

Siemens Energy & Automation, Inc.
Bellevue, OH 43311 USA.

Installation Instructions

⚡ DANGER
 Hazardous Voltage.
 Will cause severe injury or death.

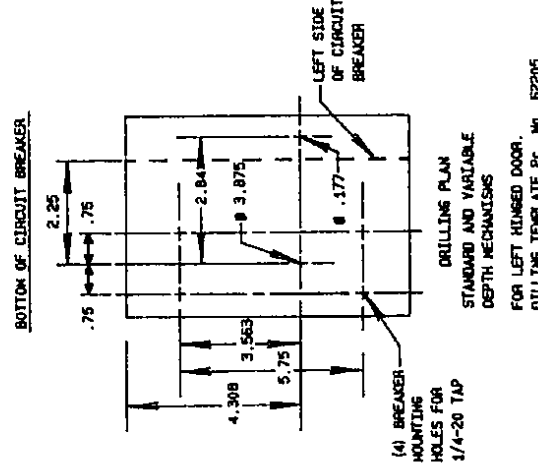
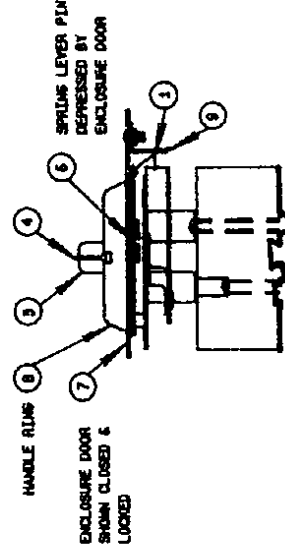
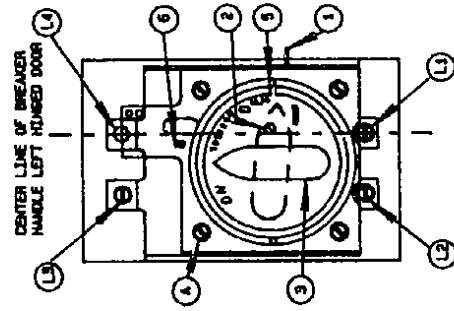
Turn off and lock out power supplying device before installing.

SAFETY INSTRUCTIONS

NOTE: This instruction outlines the recommended installation procedure.

- Turn off and lock out power supplying device before installing.
- UNMOUNTED MECHANISM
 - Mechanism in "ON" position. Latch (1) must retract from initial position 5/16 ± 1/32 when defeater screw (2) is turned clockwise with screwdriver. Latch must return when screwdriver is removed.
 - Mechanism in "ON" position. Latch (1) must retract from initial position 5/16 ± 1/32 when mechanism handle (3) is moved to maximum "OFF" position (padlock lever (4) against side of slot (5)).
- MECHANISM OPERATION:
 - With mechanism handle (3) in "ON" position, latch (1) must return to its initial position under action of the latch return spring when the latch is manually depressed.
 - Mechanism handle (3) must be prevented from returning to "ON" (vertical) position from "OFF" position unless spring lever pin (6) is manually depressed.

Item: STANDARD DEPTH FOR USE ON LEFT HINGED DOOR INSTRUCTIONS FOR MOUNTING ROTARY HANDLE ENCLOSURE MECHANISM
 Cat. No: VHS988
 For Use With: I-T-E® Circuit Breakers and Molded Case Switches.
 Types: QJ2, QJH2, QJ2-H
 Page 1 of 2



Siemens Energy & Automation, Inc.
 Bellevue, OH 43311 USA.
 Page 2 of 2
 P.C. No. 52207 Rev. C
 © Siemens Energy & Automation, Inc. 1989

Installation Instructions

MOUNTED MECHANISM

4. MOUNTING OF MECHANISM:

- Mount breaker and mechanism as shown on outline drawing, page 1, into enclosure with door drilling per drilling plan on outline drawing, page 1. Opening in mechanism lever must engage breaker handle. Do not tighten mechanism mounting screws.
- Close enclosure door (3). Center handle ring (8) in large door hole. Reopen enclosure door and tighten mechanism mounting screws securely.

5. MECHANISM OPERATION:

- Enclosure door open - Breaker cannot be closed unless spring lever pin (6) is depressed.
- Enclosure door closed - Latch (1) must engage latch bracket (9) in breaker "ON" position and disengage in breaker "OFF" position. Operation of breaker with mechanism must be unrestricted, when enclosure door is held firmly closed.
- Enclosure door closed - Turning defeater screw (2) clockwise must disengage latch (1) from latch bracket (9) to permit opening of enclosure in breaker "ON" position.
- Enclosure door closed - Padlock lever (4) must be in position to engage slot (5) in breaker "OFF" position.
- Enclosure door closed - Mechanism handle (3) must indicate "TRIPPED" when breaker is tripped from "ON" position.

MOUNTING CHART

FRAME	BREAKER MFG.	SCREEN * LOCATION	MECHANISM MFG.	SCREEN * LOCATION	LENGTH
3	POLE 2	POLE 3	POLE 2	POLE 3	POLE 2
QJ	1.161.3	1.161.4	2	1/2	3
	1.161.4	1.161.4	3	1.161.4	1.161.4
			3		3

* ALL MOUNTING SCREENS FURNISHED WITH LOCKWASHERS & FLAT WASHERS.
 FOR LEFT HINGED DOOR-USE WITH CAT. NO. 0N9498 ONLY.

⚡ DANGER
 Hazardous Voltage.
 Will cause severe injury or death.

Turn off and lock out power supplying device before installing.