



| RailXplore E00



The energy-optimized operation app optimizes mass transit time tables, avoids power peaks, and uses the recuperation energy most efficiently.

RailXplore EOO (Energy Optimized Operation)

Product Description

Limited transparency regarding energy consumption can lead to high penalties due to the exceed of contractual power peak, moreover, it does not allow to use the potential of the recuperation energy – **RailXplore EOO** is our answer to save resources. Good planning of railway operations and subsequent monitoring of the ongoing execution are the basic

RailXplore EOO dashboard

- ✓ Energy-related timetable optimization
- ✓ Simulation of signaling and traction power system
- ✓ Live monitoring of metro operation
- ✓ Forecast of system status



prerequisites for optimal operations. More than ever, the energy efficiency of a metro system is relevant for the operator and society. With **RailXplore EOO** we effectively reduce energy consumption within the metro system.

RailXplore EOO implements algorithms to analyze operational data and provide different levels of insightful optimizations:



Product variants

- EOO Offline
- EOO Offline plus
- EOO Online



Data collection

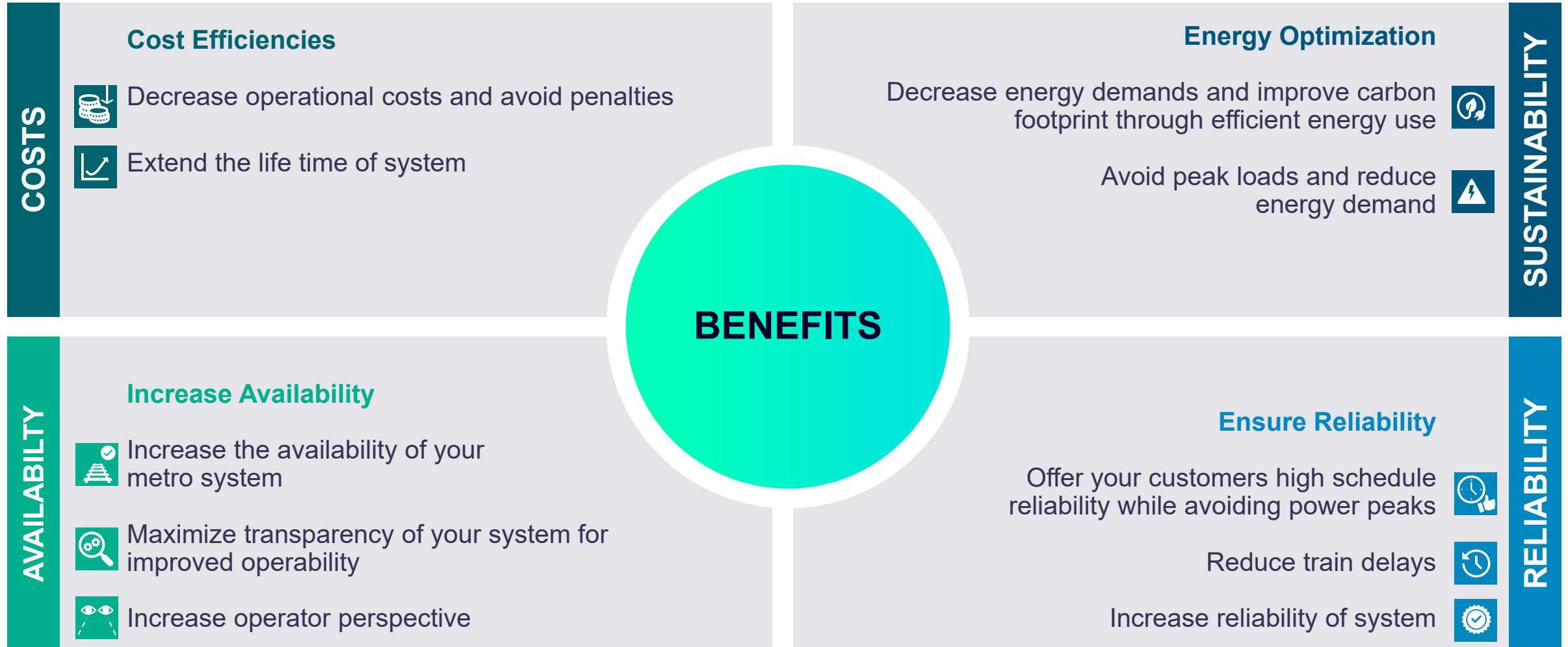
- Train location, energy, and weight
- Operation timetable
- Status of traction supplying system (P-SCADA)



Controlguide®
Falko

- Siemens application for constructing and simulating operative railway timetables

Benefits of RailXplore EOO



Key Functionalities

Save Energy Cost

- Saves energy due to efficiently used recuperation potential
- Consider technical properties of the traction power system

Improve Operation Quality

- Prove that planned operation fits with the technical setup
- Avoid system shutdown through gentle operation of the components

Raise Operation Transparency

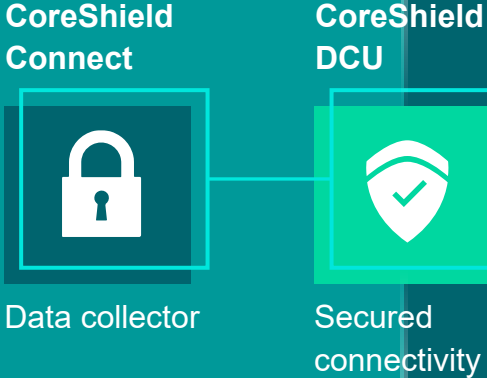
- Prove operational actions before executing them
- Insights into a live system health status and taking action based on knowledge
- Explore dependencies between metro operation and power-providing system

System Architecture

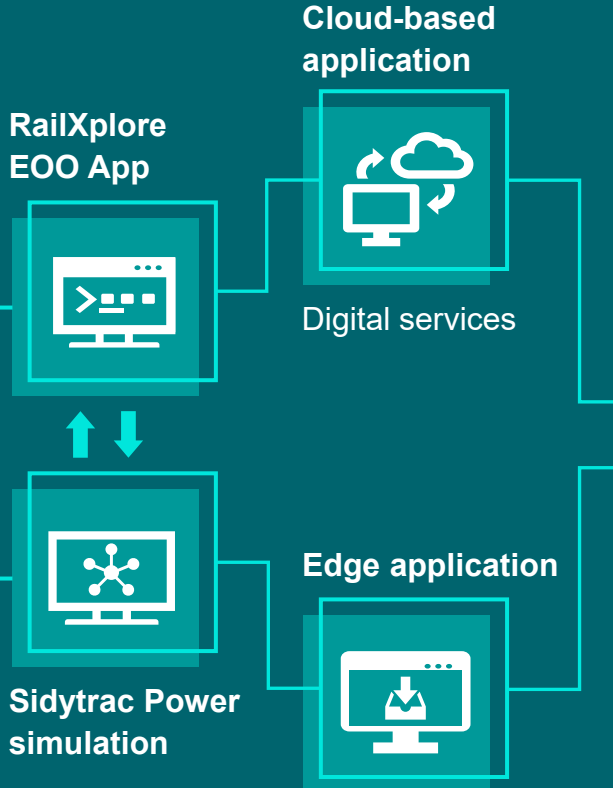
➤ Data sources



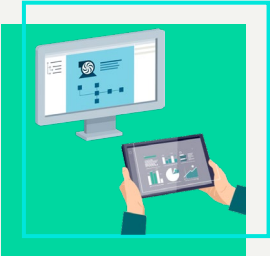
➤ System connectivity



➤ Data processing



➤ Output front end



References

PoC Energy Optimized Operation

Hong Kong

The proof of concept running in Hong Kong is validating the innovation of **RailXplore EOO** based on real data. The validation itself is done by a metro operation company with a IoT of operation experience.

RailXplore EOO is optimizing the timetables taking into account all operational requirements and the technical properties of the traction power-providing system.



| Contact

Jacob Kohlruss

Product Owner

Siemens Mobility GmbH
RI MT SIG-COC ENG SW2
Ackerstr. 22
38126 Braunschweig
Germany

Mobile: +49 172 4367309

E-Mail: jacob.kohlruss@siemens.com

Disclaimer

© Siemens 2022

Subject to changes and errors. The information given in this document only contains general descriptions and/or performance features which may not always specifically reflect those described, or which may undergo modification in the course of further development of the products. The requested performance features are binding only when they are expressly agreed upon in the concluded contract.

All product designations may be trademarks or other rights of Siemens AG, its affiliated companies or other companies whose use by third parties for their own purposes could violate the rights of the respective owner.