

TYPE 3R ENCLOSURE (RAINPROOF).
 SUITABLE FOR USE AS SERVICE EQUIPMENT WHEN NOT MORE THAN SIX MAIN
 DISCONNECTING MEANS ARE PROVIDED. WHEN USED AS SERVICE EQUIPMENT,
 BOND NEUTRAL AND APPLY "SERVICE DISCONNECT" LABEL NEAR THE
 DISCONNECT HANDLE.

DEVICE RATING: 200 AMPS MAXIMUM, 120/240 VAC (4 JAW METER), SINGLE PHASE,
 THREE WIRE OR 208Y/120 VAC (5 JAW METER), THREE WIRE. LIMITED TO TWO POLE
 BREAKERS.
 METER SOCKET RATING: 200 AMPS CONTINUOUS.

THIS DEVICE HAS A MAXIMUM SHORT CIRCUIT CURRENT RATING OF 35,000 RMS
 SYMMETRICAL AMPERES AT 240 VAC MAXIMUM. (wait-hour meter not included in short
 circuit current rating). THE ACTUAL RATING IS DEPENDENT ON THE MAIN BREAKER
 INSTALLED IN THIS PANELBOARD. THE CORRECT MAIN TO BE USED WITH THE
 VARIOUS SHORT CIRCUIT CURRENT RATINGS ARE LISTED IN THE TABULATION
 BELOW. ANY CIRCUIT BREAKER INSTALLED OR REPLACED IN THIS PANELBOARD
 MUST BE MANUFACTURED BY SIEMENS AND MUST BE OF THE CORRECT TYPE AS
 INDICATED IN THE TABULATION BELOW.

MAX short circuit current rating in RMS symmetrical Amperes	MAIN When protected by a field installed 2 pole circuit breaker Type
35,000	Murray MQL or Siemens QJ2H
22,000	Murray MQH or Siemens QJH2
10,000	Murray MQ or Siemens QJ

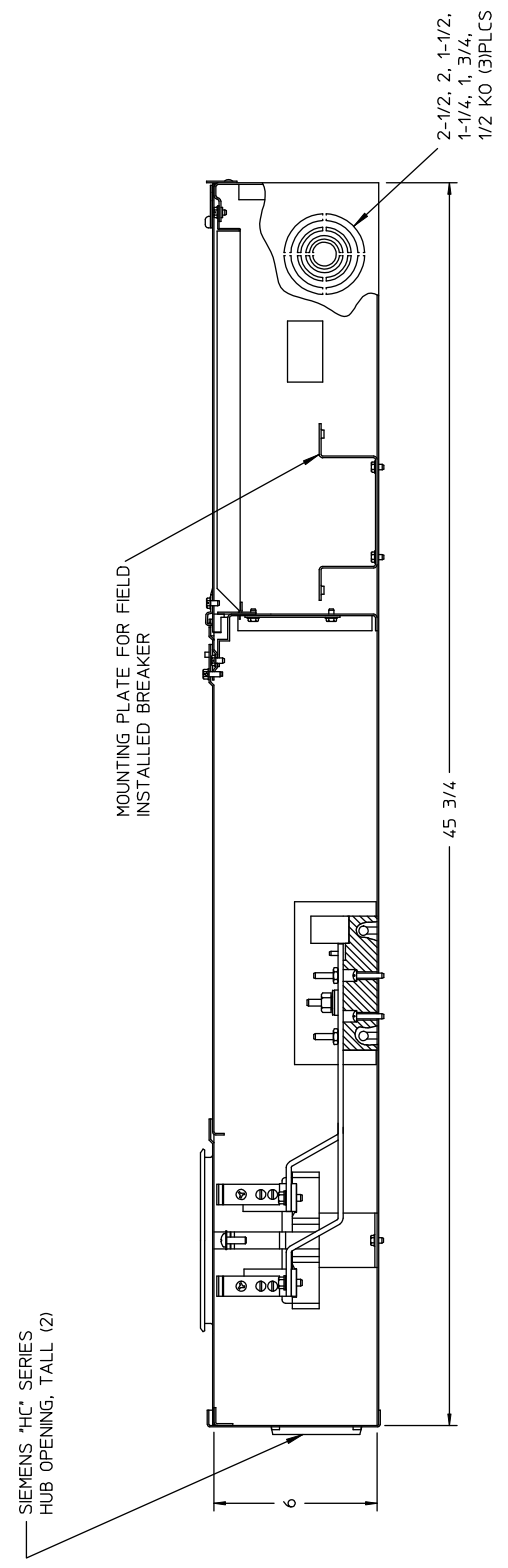
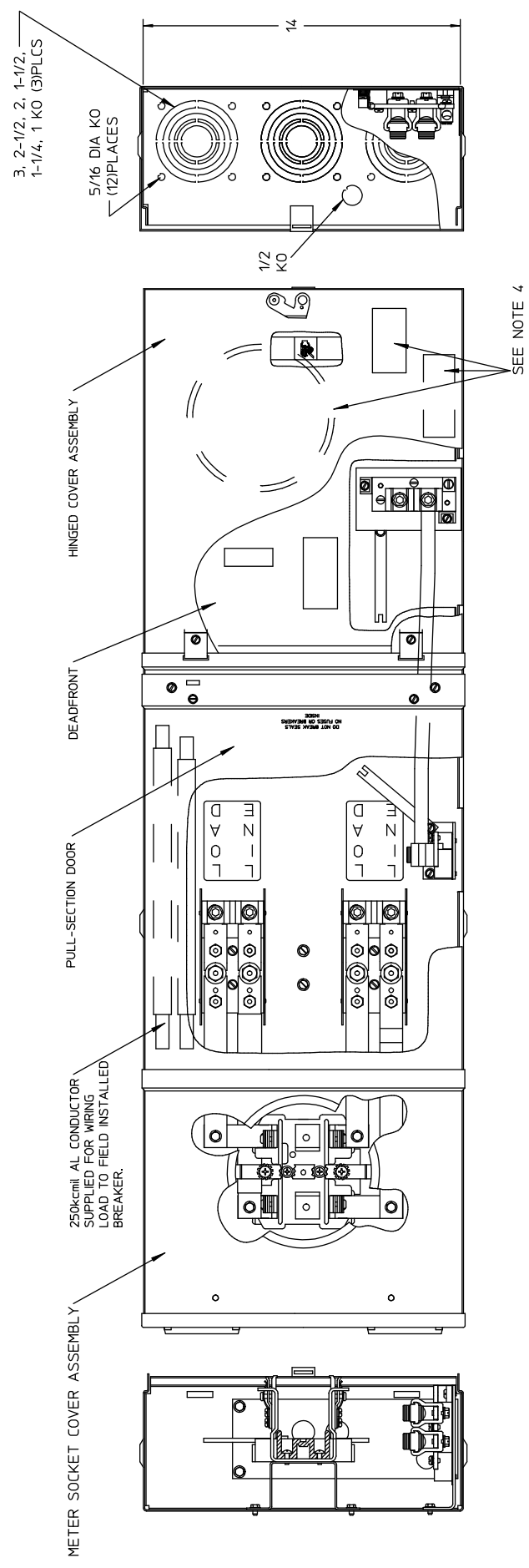
FOR BREAKERS WITH TRIPPED POSITION IN CENTER, RESET BREAKER BY MOVING HANDLE TO "OFF" AND THEN TO "ON".
 FOR EQUIPMENT GROUND BAR ORDER ECLX SERIES. FOR 5TH JAW ORDER UX005B. IF HUB IS REQUIRED SELECT FROM "HC" LIST BELOW, OR USE ECHCXA ADAPTER WITH HUBS SELECTED FROM "RX" LIST BELOW.

HC TYPE HUBS SIZE	CAT. NO.	RX TYPE HUBS SIZE	CAT. NO.
2"	ECHC200	1-1/2"	EC38598
2-1/2"	ECHC250	2"	EC38599
3"	ECHC300	2-1/2"	EC38600

TERMINALS SUITABLE FOR USE WITH 60/75°C, AL/CU INSULATED WIRE

TERMINAL TIGHTENING TORQUES, LB-IN.	WIRE SIZE:	PHASE: LINE	SERVICE GROUND	EQUIPMENT GROUND
kcmil OR AWG	LOAD & NEUTRAL	GROUND	LARGE HOLE	SMALL HOLE
250-2/0	250	---	---	---
1/0 - 3	250	50	45	---
4	250	45	45	---
6	250	45	45	35
8	---	40	40	25
10 - 12	---	35	35	20

TORQUE TEST BLOCK CIRCUIT CLOSING (DISCONNECT) NUT (5/8" ACROSS FLATS) TO 50 LB-IN.



- NOTES:
 1) FINISH: GRAY
 2) CABINET: 16 GA GALV STEEL
 3) 200 AMP, 120/240 VAC, 1 PHASE, 3 WIRE
 4) SEALING RING, HUB COVER PLATE ASY & NEMA INSTRUCTION SHEET PLACED INSIDE OF BOX BEFORE DEADFRONT IS SECURED.
 5) UL LISTED - FILE #E27485.

UNLESS OTHERWISE SPECIFIED DIMENSIONS ARE IN INCHES

TOLERANCES:
 .XX
 .XXX
 HOLE DIAMETER ANGULAR UNDIMENSIONED 90° ANGLES

DWN WRB DATE 5/8/07
 CHK DATE
 APVD DATE

SIZE ISSUE RELEASE NO. DWG NO. MM0202L1200EY REV
 DO NOT SCALE DRAWING SHEET 1 OF 1

-CONFIDENTIAL-PROPERTY OF
Siemens Energy & Automation, Inc.
 Residential Products Division
 SKT 200A 4P HO EUSERC