

TIA-portalen V17

Få overblik over flere nyheder.

SIEMENS



Dagens væarter

Michael Nielsen, Technology Specialist
Ole Dyval, Technology Specialist

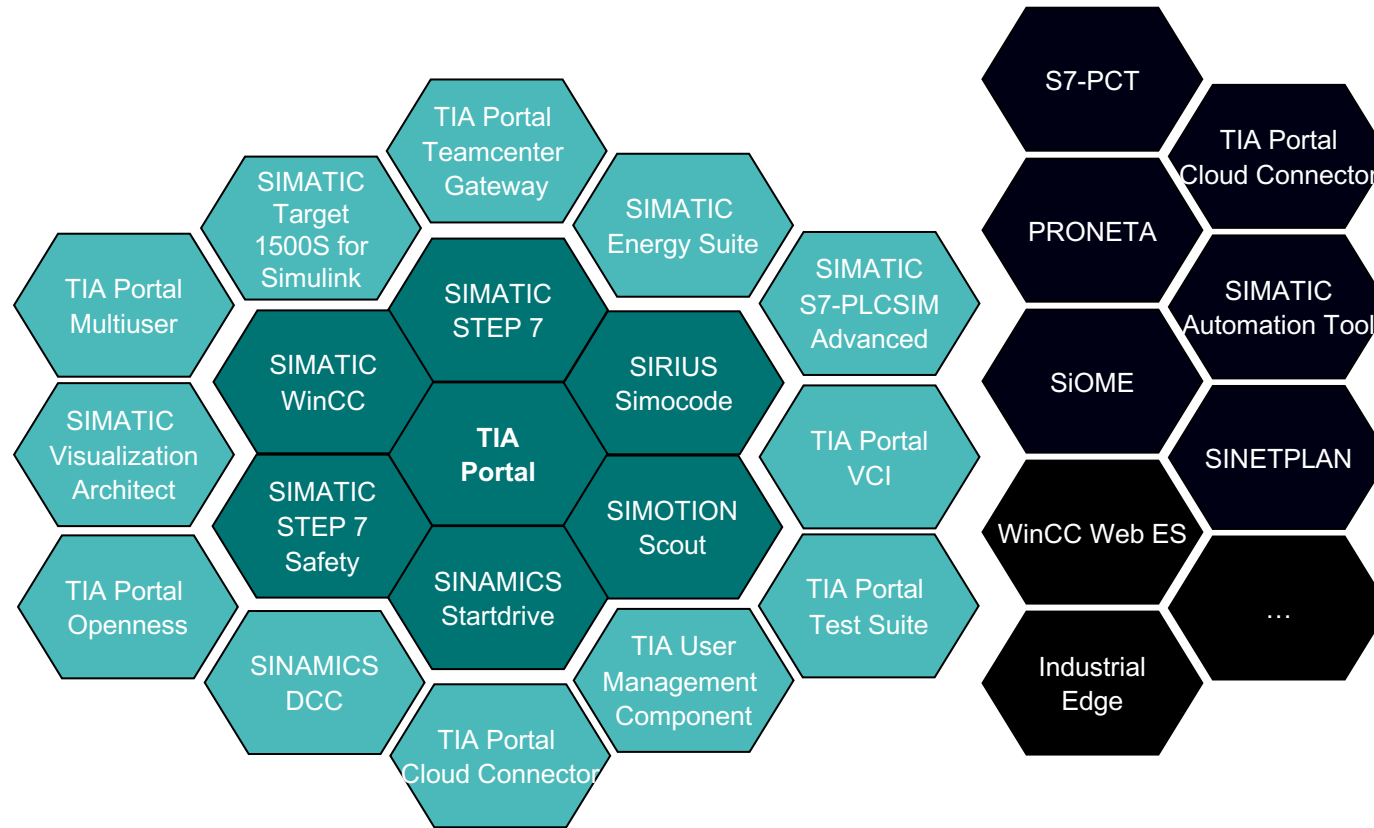
SIEMENS



Agenda for news in V17

- Which optional packages is released ?
- Teasers about news in the V17
- Extended Library features
- New editors coming up with V17 Cause Effect Matrix
- I Device new features
- Faster safety implementation and new features also with the 1500 R/H/HF family
- New features with OPC UA both for S7-1200 and S7-1500
- Security is and integrated feature for the SIMATIC systems
- Software as Perpetual and Subscription
- Extended Grace period for all TIA-portal engineering tools
- Coming up next time

Which packages are released for V17?



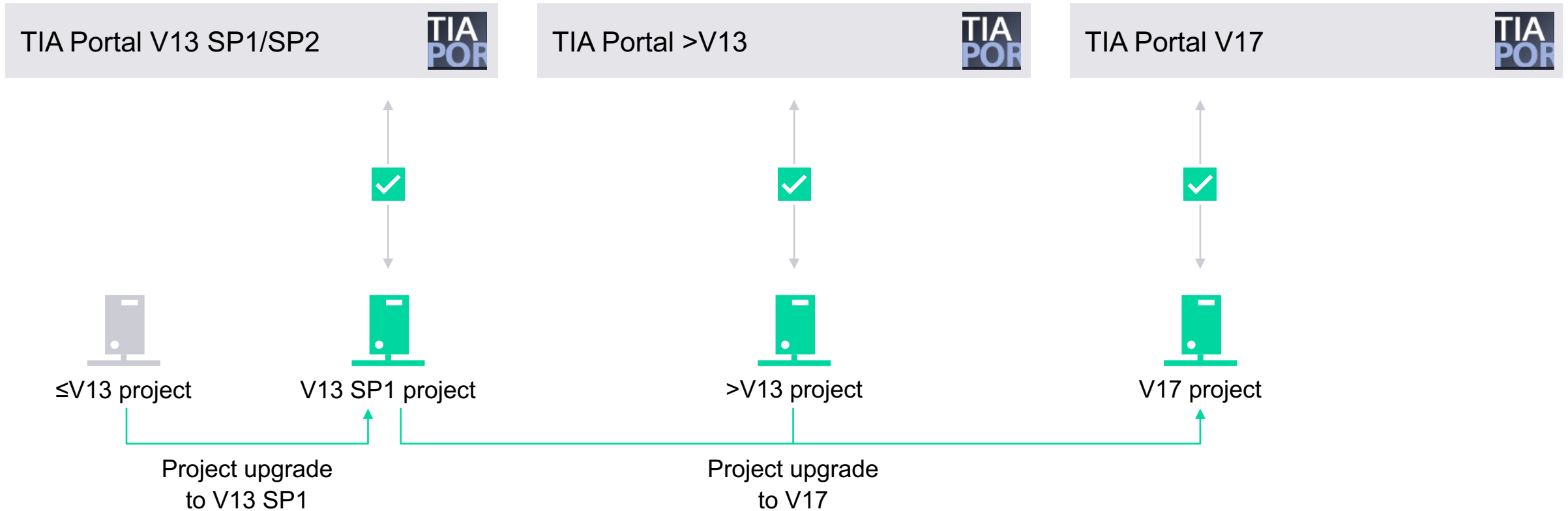
Other release time

- Scout release
- Kinematics
- Target for MatLab
- SIMOCODE ES
- Soft Starter ES
- CFC editor

Overview of TIA-portal engineeringtools and add-on's

SIEMENS

System functions - Upgrading projects



Side-by-side installation of V13 SP1/SP2 up to V17 allows access to all project versions. The V17 license can be used for all available versions from V11.

Spare Parts Compatibility

S7-1200 – FW 4.5 with older TIA Portal versions

TIA Portal V12 to TIA Portal V16



V12/V13/V13 SP1
project with
FW 1.0 to FW3.0



Firmware V4.5

V14/V14 SP1
project with
FW 4.0/4.1



Firmware V4.5

V15/V15.1
project with
FW 4.2/FW 4.3



Firmware V4.5

V16
project
with FW 4.4



Firmware V4.5

TIA Portal V17



V17 project
with FW 4.5



Firmware V4.5

Latest firmware version release: Online support: ID 109771672



New functions can be used with
TIA Portal V17 and firmware V4.5

System functions

Spare parts compatibility S7-1500 and ET 200 CPUs – FW 2.9 with older TIA Portal versions

TIA Portal V12 to TIA Portal V16



V12/V13/V13 SP1
project with
FW 1.0 to FW/1.8



Firmware V2.9

V14/V14 SP1
project with
FW 2.0/2.1



Firmware V2.9

V15/V15.1
project with
FW 2.5/FW 2.6



Firmware V2.9

V16
project
with FW 2.8



Firmware V2.9

TIA Portal V17



V17 project
with FW 2.9



Firmware V2.9

Full spare part functionality: Online support: ID 109744163



New functions can be used with TIA Portal V17 and firmware V2.9

TIA Portal – New functions

Ignore inverted commas in "Open block" dialog (F7)

This allows block names to be copied straight from an editor to the "Open block" dialog, where they can then be opened.

Downloading data blocks

As of V17, data blocks are not re-initialized during loading until their structure has actually changed (<V17 interface timestamp).

This enables a subsequent download without re-initialization when generating data blocks with an identical structure via Openness/VCI/ASCII sources.

Simplified search with "Ctrl + F"

In many STEP 7 editors, "Ctrl + F" can be used to copy the marked text straight into the Find box of the local search function. A second "Ctrl + F" copies the search text to the global search.

Cross-reference editor

Improved visualization of overlapping input and output addresses.

Improved line break at variable names

In LAD, FBD, GRAPH and CEM, at operands written in "camelCasing" or "PascalCasing" a line break is inserted before an uppercase letter if possible.

Number of replacements

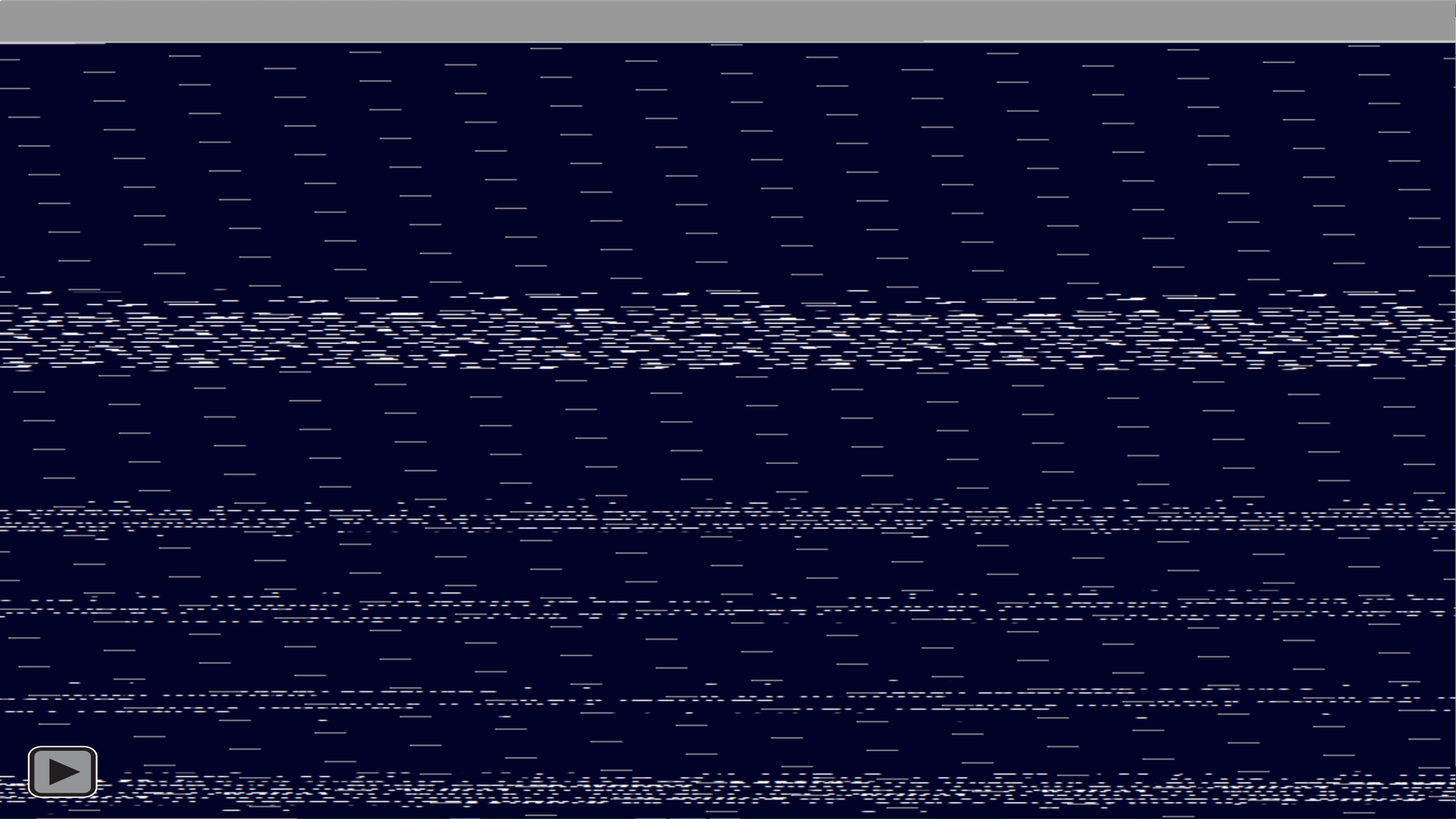
The total number of replacements is displayed for local Find & Replace.

More one-finger keyboard shortcuts

The keyboard shortcuts for LAD (empty box, normally closed, normally open) and FBD (empty box, AND, OR) can now be operated with one finger (F8, F9, F10).

Partial search for block names in "Open block" dialog (F7)

Block search without entering prefix in "Open block" dialog.



TIA Portal – New functions

Ignore inverted commas in "Open block" dialog (F7)

This allows block names to be copied straight from an editor to the "Open block" dialog, where they can then be opened.

Downloading data blocks

As of V17, data blocks are not re-initialized during loading until their structure has actually changed (<V17 interface timestamp).

This enables a subsequent download without re-initialization when generating data blocks with an identical structure via Openness/VCI/ASCII sources.

Simplified search with "Ctrl + F"

In many STEP 7 editors, "Ctrl + F" can be used to copy the marked text straight into the Find box of the local search function. A second "Ctrl + F" copies the search text to the global search.

Cross-reference editor

Improved visualization of overlapping input and output addresses.

Improved line break at variable names

In LAD, FBD, GRAPH and CEM, at operands written in "camelCasing" or "PascalCasing" a line break is inserted before an uppercase letter if possible.

Number of replacements

The total number of replacements is displayed for local Find & Replace.

More one-finger keyboard shortcuts

The keyboard shortcuts for LAD (empty box, normally closed, normally open) and FBD (empty box, AND, OR) can now be operated with one finger (F8, F9, F10).

Partial search for block names in "Open block" dialog (F7)

Block search without entering prefix in "Open block" dialog.



TIA Portal – New functions

Ignore inverted commas in "Open block" dialog (F7)

This allows block names to be copied straight from an editor to the "Open block" dialog, where they can then be opened.

Cross-reference editor

Improved visualization of overlapping input and output addresses.

Downloading data blocks

As of V17, data blocks are not re-initialized during loading until their structure has actually changed (<V17 interface timestamp).

This enables a subsequent download without re-initialization when generating data blocks with an identical structure via Openness/VCI/ASCII sources.

Simplified search with "Ctrl + F"

In many STEP 7 editors, "Ctrl + F" can be used to copy the marked text straight into the Find box of the local search function. A second "Ctrl + F" copies the search text to the global search.

Improved line break at variable names

In LAD, FBD, GRAPH and CEM, at operands written in "camelCasing" or "PascalCasing" a line break is inserted before an uppercase letter if possible.

Number of replacements

The total number of replacements is displayed for local Find & Replace.

More one-finger keyboard shortcuts

The keyboard shortcuts for LAD (empty box, normally closed, normally open) and FBD (empty box, AND, OR) can now be operated with one finger (F8, F9, F10).

Partial search for block names in "Open block" dialog (F7)

Block search without entering prefix in "Open block" dialog.



TIA Portal – New functions

Ignore inverted commas in "Open block" dialog (F7)

This allows block names to be copied straight from an editor to the "Open block" dialog, where they can then be opened.

Downloading data blocks

As of V17, data blocks are not re-initialized during loading until their structure has actually changed (<V17 interface timestamp).

This enables a subsequent download without re-initialization when generating data blocks with an identical structure via Openness/VCI/ASCII sources.

Simplified search with "Ctrl + F"

In many STEP 7 editors, "Ctrl + F" can be used to copy the marked text straight into the Find box of the local search function. A second "Ctrl + F" copies the search text to the global search.

Cross-reference editor

Improved visualization of overlapping input and output addresses.

Improved line break at variable names

In LAD, FBD, GRAPH and CEM, at operands written in "camelCasing" or "PascalCasing" a line break is inserted before an uppercase letter if possible.

Number of replacements

The total number of replacements is displayed for local Find & Replace.

More one-finger keyboard shortcuts

The keyboard shortcuts for LAD (empty box, normally closed, normally open) and FBD (empty box, AND, OR) can now be operated with one finger (F8, F9, F10).

Partial search for block names in "Open block" dialog (F7)

Block search without entering prefix in "Open block" dialog.



TIA Portal – New functions

Ignore inverted commas in "Open block" dialog (F7)

This allows block names to be copied straight from an editor to the "Open block" dialog, where they can then be opened.

Cross-reference editor

Improved visualization of overlapping input and output addresses.

Downloading data blocks

As of V17, data blocks are not re-initialized during loading until their structure has actually changed (<V17 interface timestamp).

This enables a subsequent download without re-initialization when generating data blocks with an identical structure via Openness/VCI/ASCII sources.

Improved line break at variable names

In LAD, FBD, GRAPH and CEM, at operands written in "camelCasing" or "PascalCasing" a line break is inserted before an uppercase letter if possible.

More one-finger keyboard shortcuts

The keyboard shortcuts for LAD (empty box, normally closed, normally open) and FBD (empty box, AND, OR) can now be operated with one finger (F8, F9, F10).

Simplified search with "Ctrl + F"

In many STEP 7 editors, "Ctrl + F" can be used to copy the marked text straight into the Find box of the local search function. A second "Ctrl + F" copies the search text to the global search.

Number of replacements

The total number of replacements is displayed for local Find & Replace.

Partial search for block names in "Open block" dialog (F7)

Block search without entering prefix in "Open block" dialog.



TIA Portal – New functions

Ignore inverted commas in "Open block" dialog (F7)

This allows block names to be copied straight from an editor to the "Open block" dialog, where they can then be opened.

Cross-reference editor

Improved visualization of overlapping input and output addresses.

More one-finger keyboard shortcuts

The keyboard shortcuts for LAD (empty box, normally closed, normally open) and FBD (empty box, AND, OR) can now be operated with one finger (F8, F9, F10).

Downloading data blocks

As of V17, data blocks are not re-initialized during loading until their structure has actually changed (<V17 interface timestamp).

This enables a subsequent download without re-initialization when generating data blocks with an identical structure via Openness/VCI/ASCII sources.

Improved line break at variable names

In LAD, FBD, GRAPH and CEM, at operands written in "camelCasing" or "PascalCasing" a line break is inserted before an uppercase letter if possible.

Simplified search with "Ctrl + F"

In many STEP 7 editors, "Ctrl + F" can be used to copy the marked text straight into the Find box of the local search function. A second "Ctrl + F" copies the search text to the global search.

Number of replacements

The total number of replacements is displayed for local Find & Replace.

Partial search for block names in "Open block" dialog (F7)

Block search without entering prefix in "Open block" dialog.



TIA Portal – New functions

Ignore inverted commas in "Open block" dialog (F7)

This allows block names to be copied straight from an editor to the "Open block" dialog, where they can then be opened.

Downloading data blocks

As of V17, data blocks are not re-initialized during loading until their structure has actually changed (<V17 interface timestamp).

This enables a subsequent download without re-initialization when generating data blocks with an identical structure via Openness/VCI/ASCII sources.

Simplified search with "Ctrl + F"

In many STEP 7 editors, "Ctrl + F" can be used to copy the marked text straight into the Find box of the local search function. A second "Ctrl + F" copies the search text to the global search.

Cross-reference editor

Improved visualization of overlapping input and output addresses.

Improved line break at variable names

In LAD, FBD, GRAPH and CEM, at operands written in "camelCasing" or "PascalCasing" a line break is inserted before an uppercase letter if possible.

More one-finger keyboard shortcuts

The keyboard shortcuts for LAD (empty box, normally closed, normally open) and FBD (empty box, AND, OR) can now be operated with one finger (F8, F9, F10).

Number of replacements

The total number of replacements is displayed for local Find & Replace.

Partial search for block names in "Open block" dialog (F7)

Block search without entering prefix in "Open block" dialog.



TIA Portal – New functions

Ignore inverted commas in "Open block" dialog (F7)

This allows block names to be copied straight from an editor to the "Open block" dialog, where they can then be opened.

Downloading data blocks

As of V17, data blocks are not re-initialized during loading until their structure has actually changed (<V17 interface timestamp). This enables a subsequent download without re-initialization when generating data blocks with an identical structure via Openness/VCI/ASCII sources.

Simplified search with "Ctrl + F"

In many STEP 7 editors, "Ctrl + F" can be used to copy the marked text straight into the Find box of the local search function. A second "Ctrl + F" copies the search text to the global search.

Cross-reference editor

Improved visualization of overlapping input and output addresses.

Improved line break at variable names

In LAD, FBD, GRAPH and CEM, at operands written in "camelCasing" or "PascalCasing" a line break is inserted before an uppercase letter if possible.

Number of replacements

The total number of replacements is displayed for local Find & Replace.

More one-finger keyboard shortcuts

The keyboard shortcuts for LAD (empty box, normally closed, normally open) and FBD (empty box, AND, OR) can now be operated with one finger (F8, F9, F10).

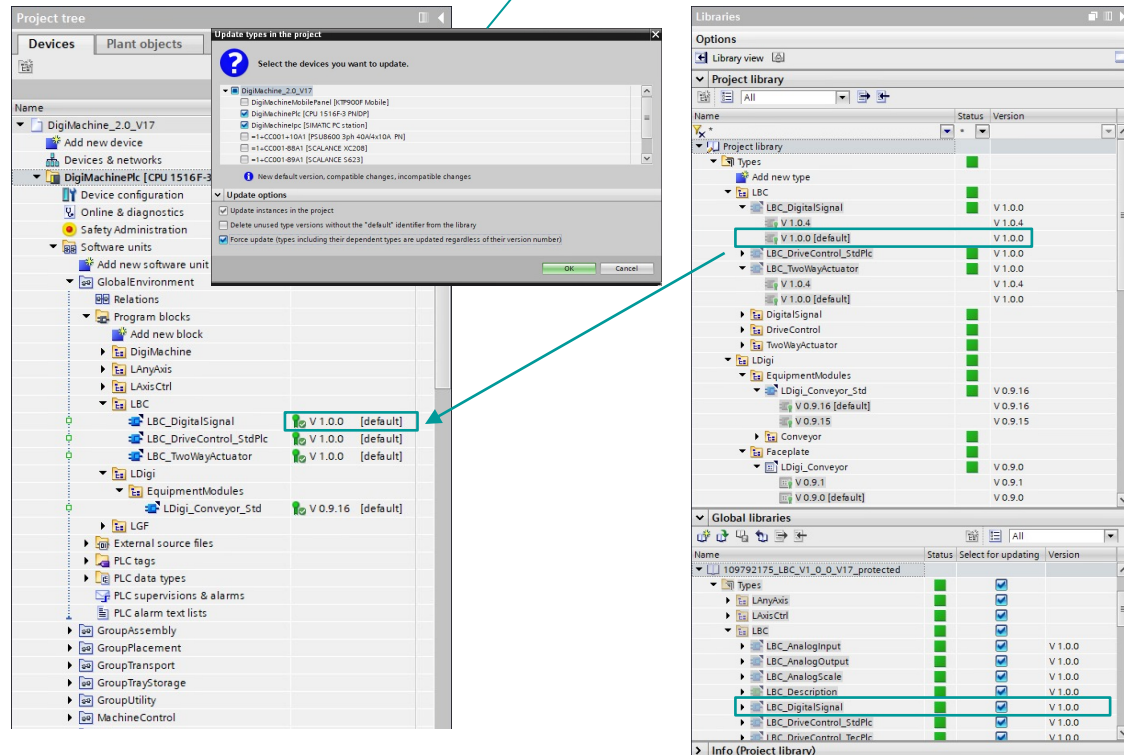
Partial search for block names in "Open block" dialog (F7)

Block search without entering prefix in "Open block" dialog.

TIA Portal – System functions

Extended library functions – use types

Updating a minor library number into the project



Default version

- The highest version number is no longer leading
- The user can define any version as default version
- The default version is used when executing library functions
- By setting the default version and following update also older versions can be used in the project

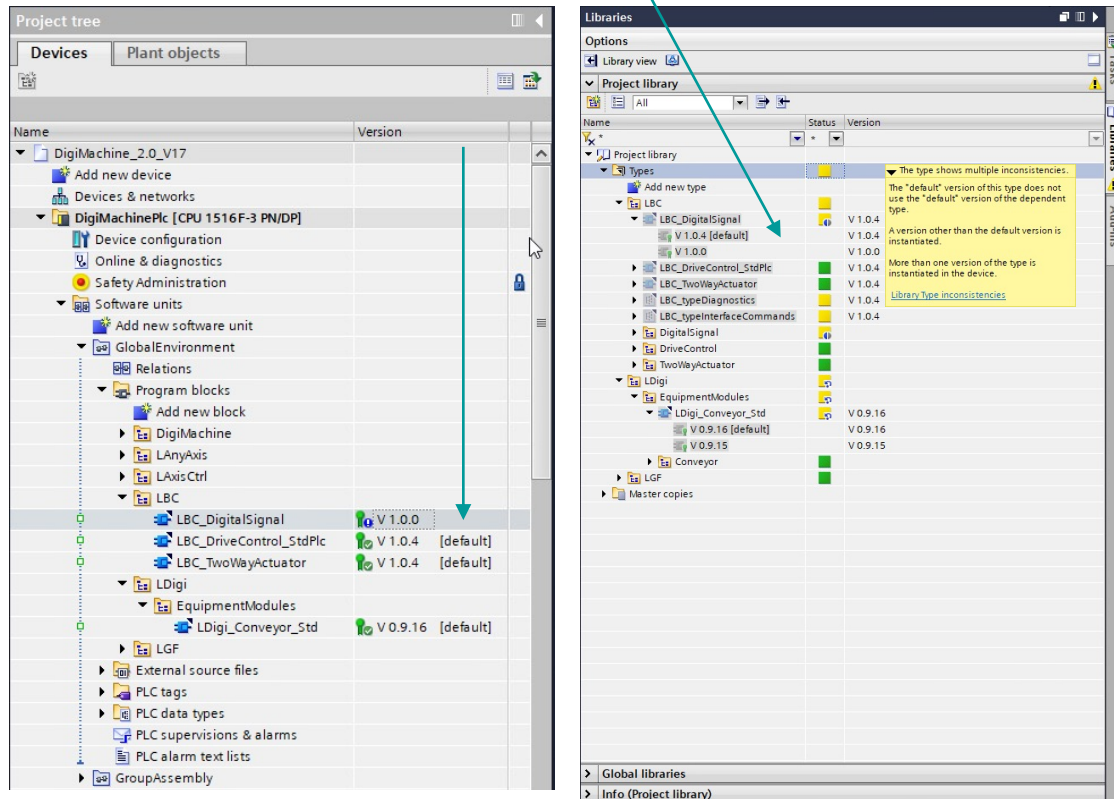
Library update

- With the option "Force update" the user can perform a library update independent from the version number
- Older or new versions can be deleted, so that only one version of a type is still contained in the project
- The user can define which types / versions should be updated from the Global Library
- This allows to..
 - undo changes in the project
 - set library objects in the project to a defined version
 - use older versions from a global library
 - use preconfigured global libraries for the project update

TIA Portal – system functions

Extended library functions – status of library type

The “default” version of block “LBC_DigitalSignal” is not used in PLC



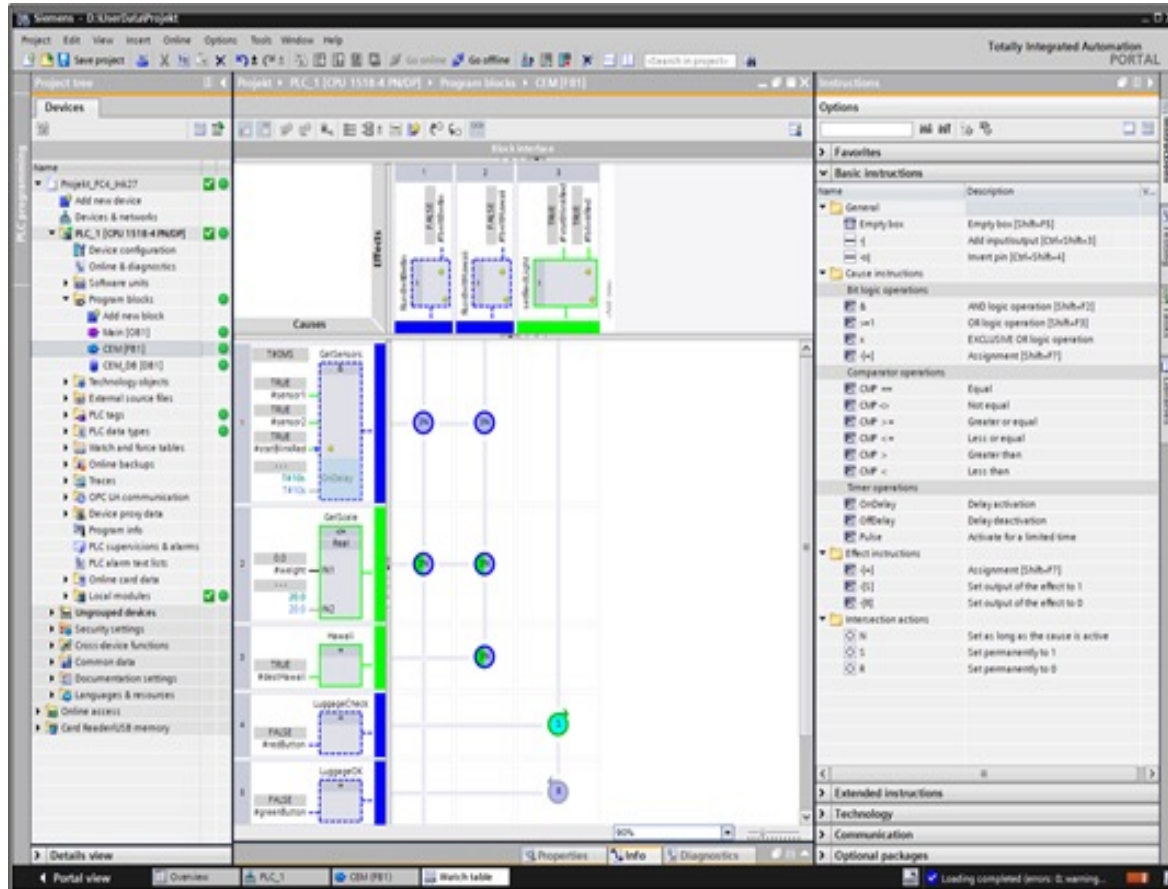
Overview of library types

- To display the state and usage of library types within a project, each library type has a status icon.
- This allows the user a quick overview of types ...
 - which do not use the default version of another type
 - for which the same version numbers are available
 - of which another version than the default version is instantiated
 - of which several versions are instantiated in one device
- The status icon of a library type is propagated through the folder levels
- The status information to be displayed can be configured in the settings of the TIA Portal

Show inconsistencies in libraries

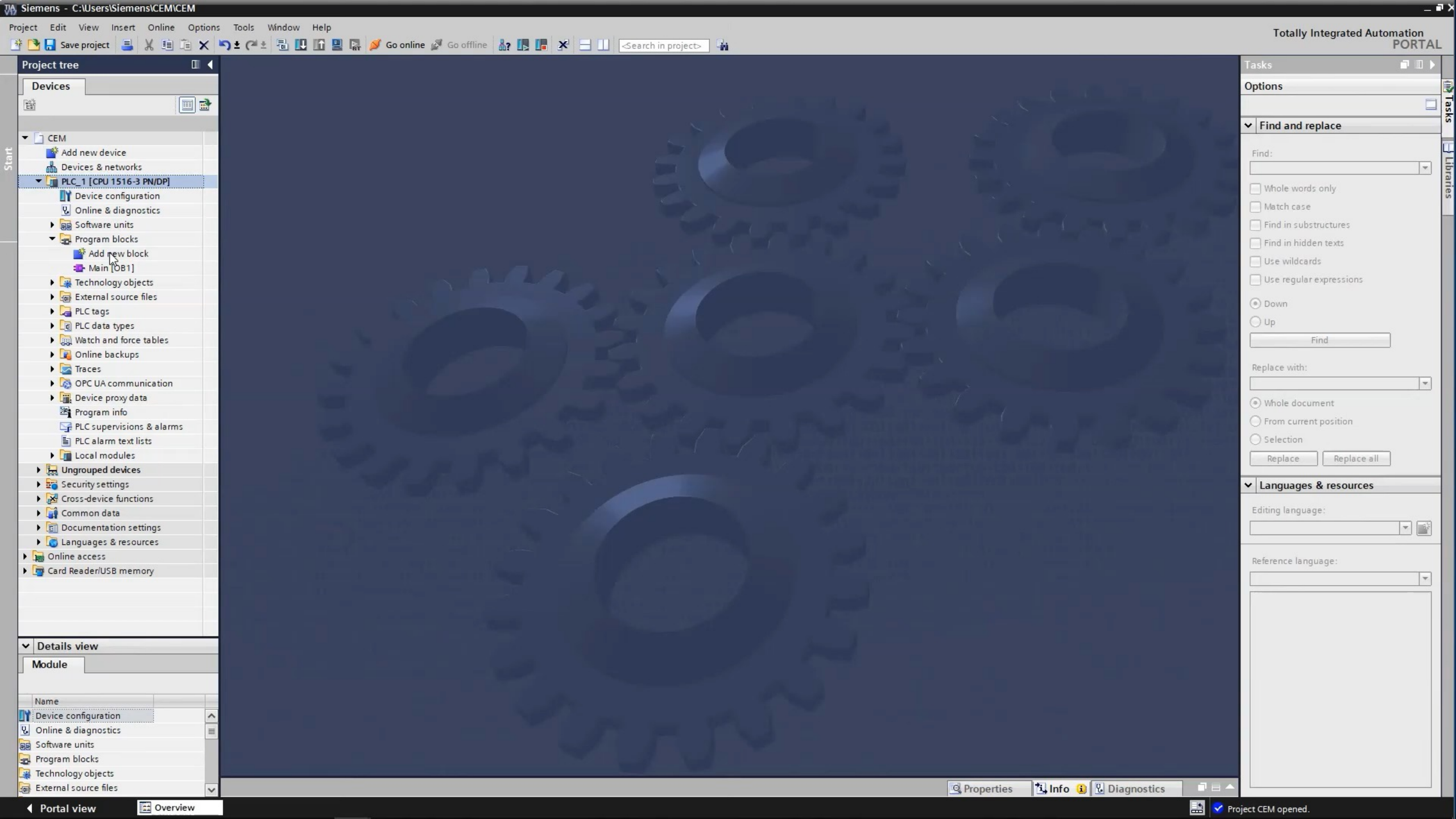
- ☒ Show symbol when a default version does not use the default version of the dependent type
- ☒ Show symbol when duplicates of a type version exist
- ☒ Show symbol when multiple versions of a type are instantiated in the same device
- ☒ Show symbol when a non-default version is instantiated

Cause Effect Matrix CEM editor



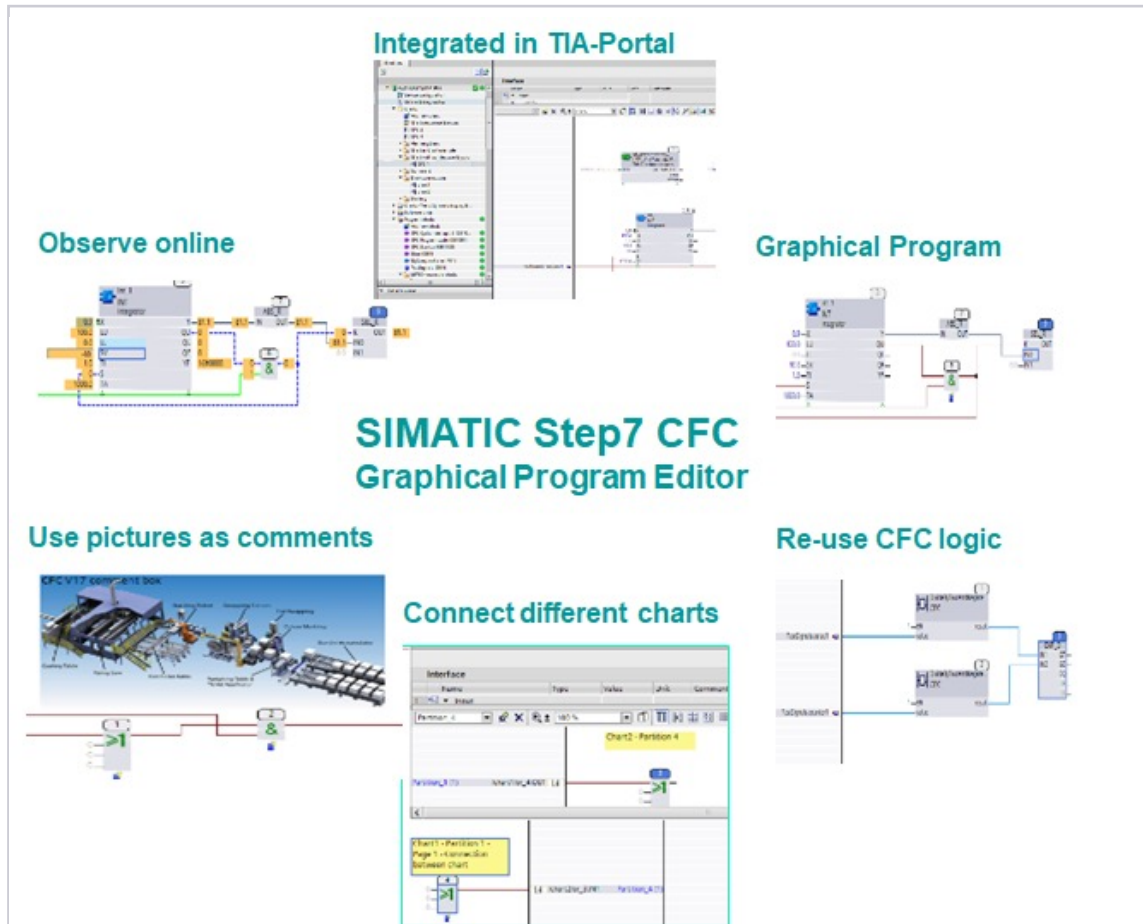
Build in editor in the TIA-portal

- Can be used together with S7-1200 and S7-1500
- Cause in combination with Effect will give the answer
- On- and off-line editor



STEP 7 – innovations

SIMATIC STEP 7 CFC V17



SIMATIC STEP 7 CFC

Graphical programming for SIMATIC S7-1500

Generation of automation programs by drawing a technology chart
→ **Solve automation tasks already in the configuration phase**

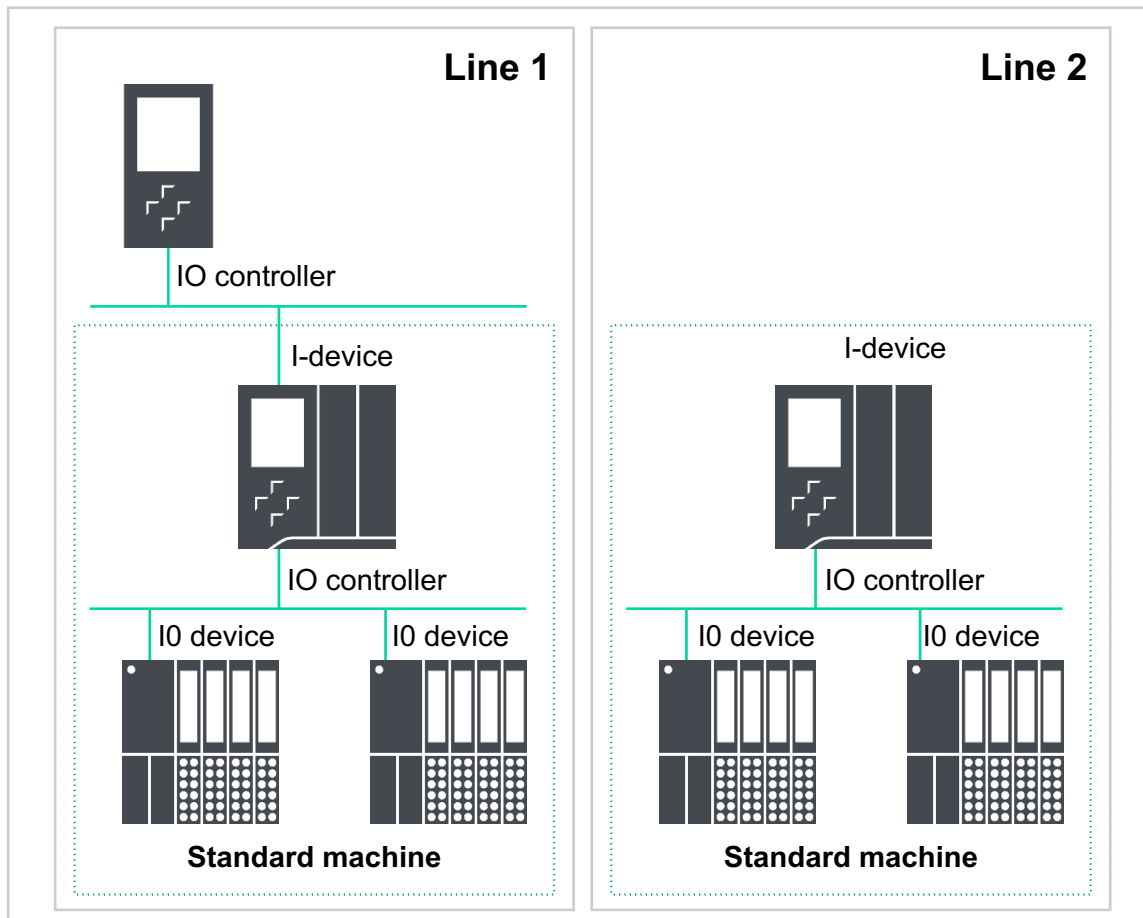
Parameterize technology functions by linking function blocks (AND, OR, PID Controllers)
→ **Functions are created much faster than with conventional programming**

Use of “Chart in Chart” technology for a hierarchical structure
→ **Significantly less possible error sources**

Convert technical requirements into complete, executable automation programs by pressing a button
→ **The configuring data are converted automatically.**

Use the TIA Portal mechanisms for the transfer to the programmable controller
→ **More efficient engineering**

Deactivating/activating the I-device in the user program



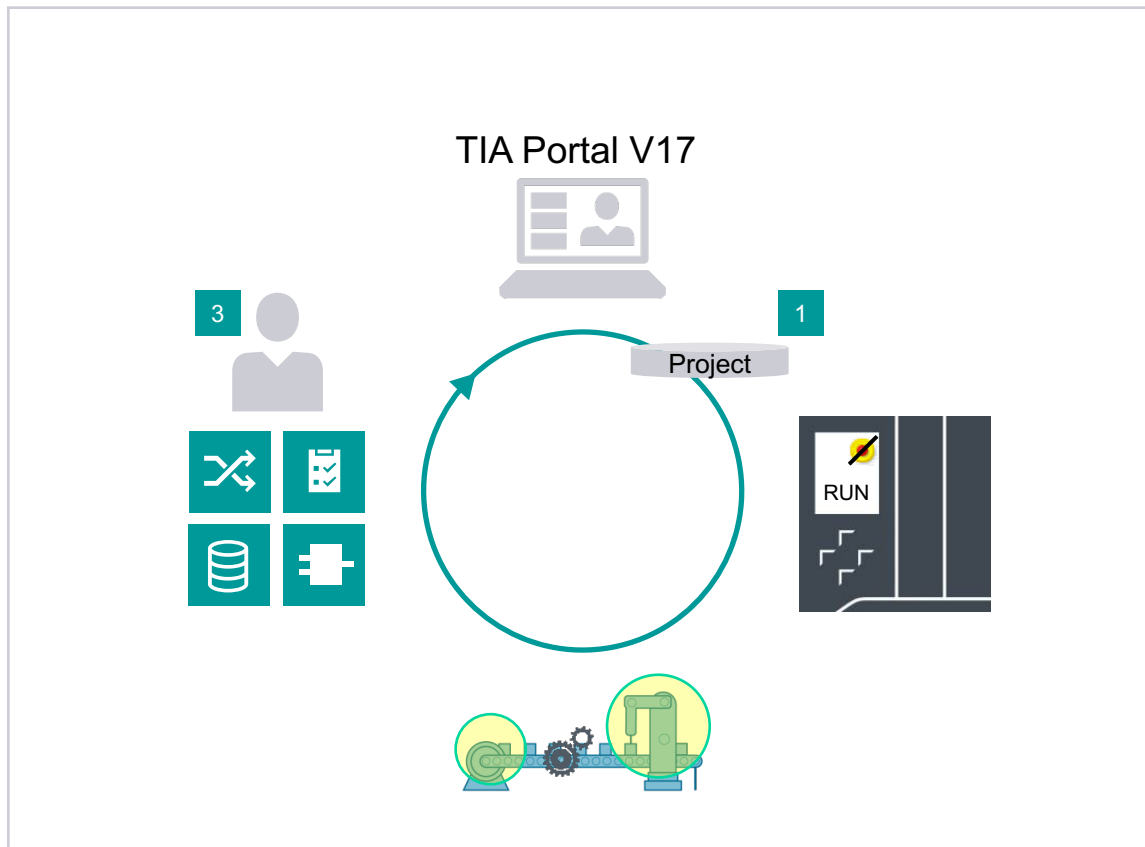
- The I-device configuration of a CPU can be deactivated or re-activated by using the instruction "D_ACT_DP"
- If the IO controller is not available, the I-device CPU does not longer indicate an error via its ERROR LEDs (if the I-device function is deactivated by the user program)
- Pre condition: TIA Portal V17, CPU FW V2.9, CM 1542-1 FW V3.0

Customer benefits

- All standard machines have a uniform user program, regardless of whether there is an IO controller at the deployment site
- No annoying/confusing ERROR LED display

SIMATIC STEP 7 Safety V17

Fast Commissioning



Fast Commissioning workflow

1. Download prepared project to controller.
2. Deactivate Safety mode and activate Fast Commissioning mode
3. Perform adjustments in safety program during operation
4. Finalize project by full compile
5. Final download of the safety program
6. Activation of Safety mode and re-initialization by STOP – START transition of CPU

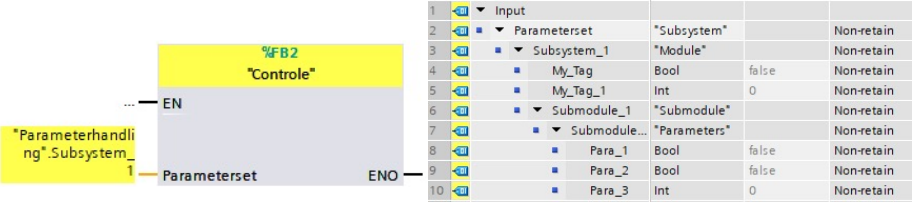
Benefits

- Increased efficiency when commissioning the safety program
- Shorter compile times during commissioning
- Adjustments of safety program during deactivated safety mode
- More control due to time limitation of deactivated Safety mode



SIMATIC STEP 7 Safety V17

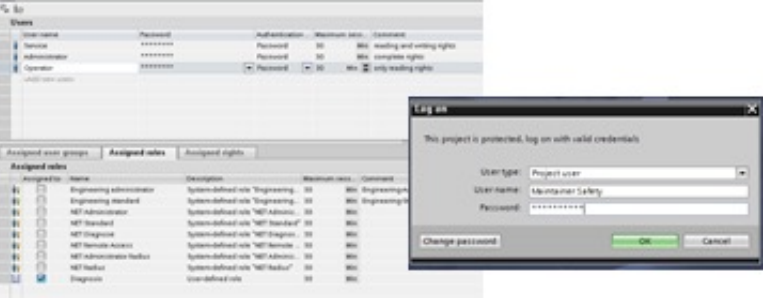
1.



2.

Description	Used and compiled	Function in safety program	Offline signature
Program blocks			
FOB_RTG1 [OB123]	Yes	F-OB	0xA7482493
Main_Safety_RTG1 [FB1]	Yes	F-FB	0xF308B915
FFB_used_DB [DB3]	Yes	I-DB for F-FB	0x27E959F6
Main_Safety_RTG1_DB [DB1]	Yes	I-DB for F-FB	0x27E959F6
tmp			Not available.
unused			0x783E1951
FFC_unused [FC1]	Yes	F-FC	0xD379BA50
FDB_unused [DB2]	Yes	F-DB	0x27E959F6
used			0x9896C7CD
FFC_used_5 [FC7]	No	F-FC	Not available.

3.



1. Nested F-compliant PLC data types

Optimum structuring of data in the safety program can now be achieved by creating F-compliant data types up to a nesting depth of 8. All data types allowed in the safety program can be used as F-PLC data.

2. Group signature

Changes in structure of safety program can be localized more quickly. Acceptance procedures can do more efficiently by comparing the group signature of the changed and the already accepted safety program.

3. UMAC

It's possible to realize access protection for the F-program based on user-specific/role-specific UMAC rights.

Acknowledgment of failsafe warn cycle time

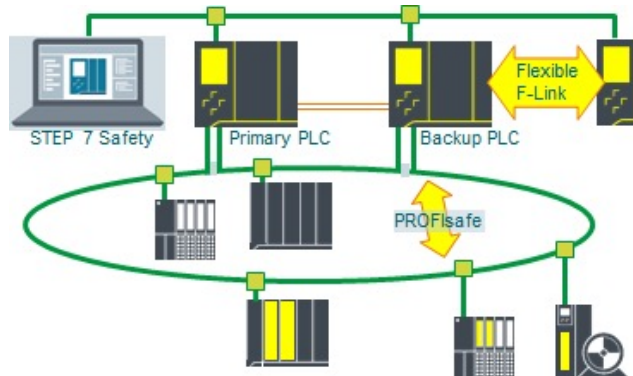
With block ACK_FCT_WARN it's possible to acknowledge the message for exceeding failsafe warn cycle time.

Think green – paperless safety printout

The requirement concerning handling the safety printout has been modified in the manual and now allows paperless storage and archiving – which means a paper printout is no longer necessary.

Advanced Controller

Redundant controller with Safety: CPU 1518HF-4 PN



New PLC: CPU 1518HF-4 PN

- Engineering in STEP 7 Professional (TIA Portal) V17 and STEP 7 Safety
- Safety programming similar to non-redundant fail-safe PLC
- Support of PROFIsafe communication
- Supports flexible F-Link for fail-safe controller/controller communication
- 3rd Ethernet interface (X3) for redundant “north-bound” connection

Benefits

- No additional failsafe PLC required
- High level of availability for applications in combination with Safety

Agenda for news in V17

- Which optional packages is released ?
- Teasers about news in the V17
- Extended Library features
- New editors coming up with V17 Cause Effect Matrix
- I Device new features
- Faster safety implementation and new features also with the 1500 R/H/HF family
- New features with OPC UA both for S7-1200 and S7-1500
- Security is and integrated feature for the SIMATIC systems
- Software as Perpetual and Subscription
- Extended Grace period for all TIA-portal engineering tools
- Coming up next time

OPC UA S7-1200 V4.5

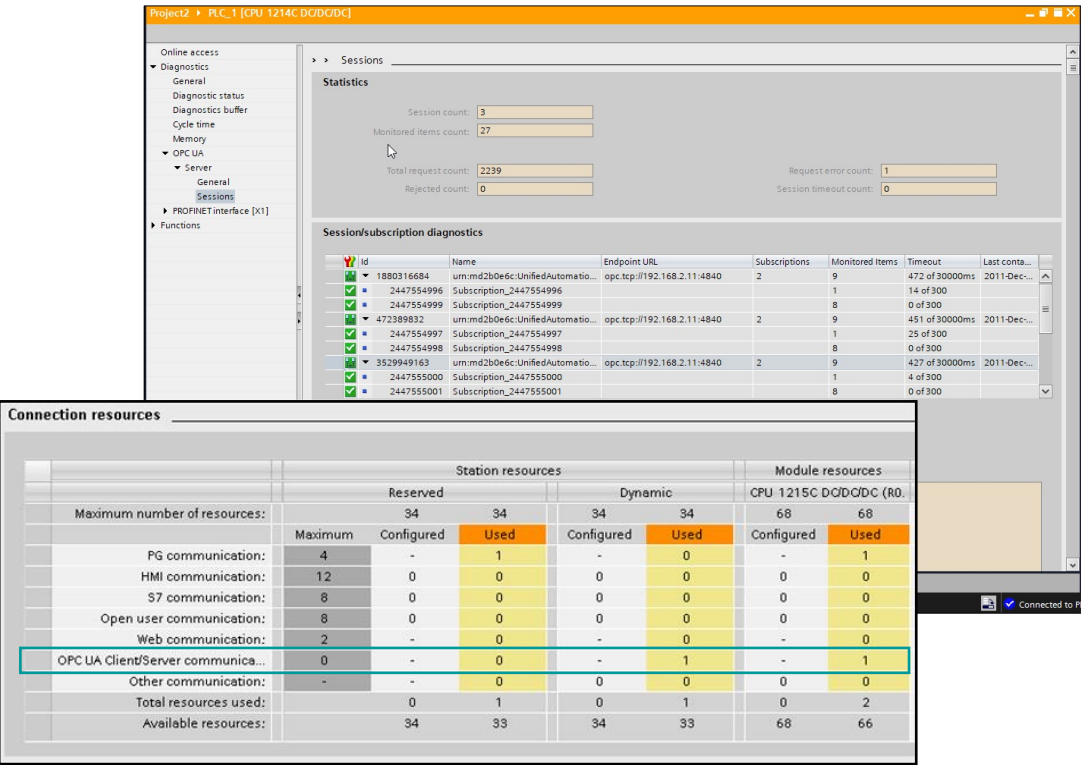
Extended range of functions



Supports

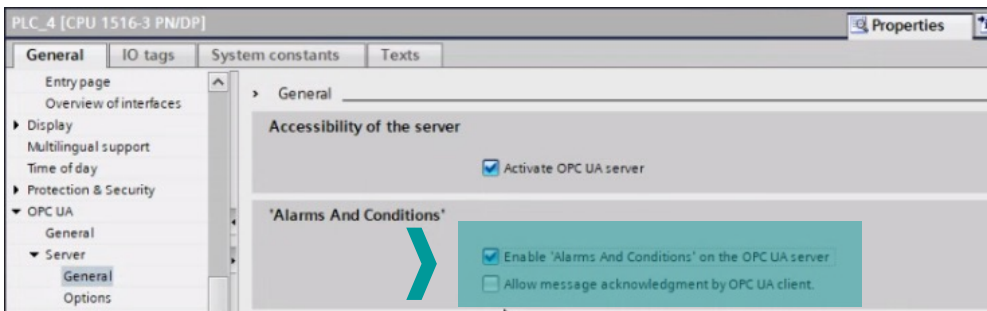
- Structured data types and arrays

OPC UA server diagnostics in TIA Portal also for S7-1200



OPC UA highlights for SIMATIC S7-1500 and ET 200 CPUs

OPC UA server – Alarms & Conditions



Events								
Events Alarms Event History								
A	C	Time	Severity	Server/Object	SourceName	Message	EventType	Active
		14:14:55.884	500	Quickstart Alar...	Internal	Events Raised	AuditEventType	
		14:14:55.884	500	Quickstart Alar...	EastTank	The alarm severity has increased.	NonExclusiveLevelAlarmType	LowActive
		14:14:55.884	500	Quickstart Alar...	NorthMotor	The alarm severity has increased.	ExclusiveDeviationAlarmType	High
		14:14:55.884	500	Quickstart Alar...	SouthMotor	The alarm severity has increased.	TripAlarmType	Active
		14:14:56.898	500	Quickstart Alar...	Internal	Raising Events	SystemEventType	
		14:14:56.898	500	Quickstart Alar...	Internal	Events Raised	AuditEventType	
		14:14:57.912	500	Quickstart Alar...	Internal	Raising Events	SystemEventType	
		14:14:57.912	500	Quickstart Alar...	Internal	Events Raised	AuditEventType	
		14:14:57.912	900	Quickstart Alar...	EastTank	The alarm severity has increased.	ExclusiveDeviationAlarmType	High
		14:14:57.912	900	Quickstart Alar...	WestTank	The alarm severity has increased.	TripAlarmType	Active
		14:14:57.912	900	Quickstart Alar...	SouthMotor	The alarm severity has increased.	NonExclusiveLevelAlarmType	LowLowActive
Details								
Name		Value						
Identifier		I:Metals/SouthMotor?Silver						
AckedState/Id		False						
ActiveState		"en-US", "Active"						
ActiveState/EffectiveDisplayName		"en-US", "LowActive"						
ActiveState/Id		True						
ConditionName		Silver						
ConfirmedState/Id		False						
EventId		len=16, 0xf43d7759d2d0f4438a08baf449d7583f						
Event Type		NodeId						
Message		"" "The alarm severity has increased."						
Retain		True						
Severity		500						
SourceName		SouthMotor						
Time		14:14:41.682						

CPU messages can be transferred to OPC UA clients

Supported SIMATIC alarm types

- Programmed alarms/messages
- ProDiag messages
- System events

Per subscriptions Alarms, Conditions & Events can be subscribed by the client.

Program messages incl. associated values are provided by the OPC UA server.

Alarms requiring acknowledgement can be acknowledged from the OPC UA client (can be deactivated).

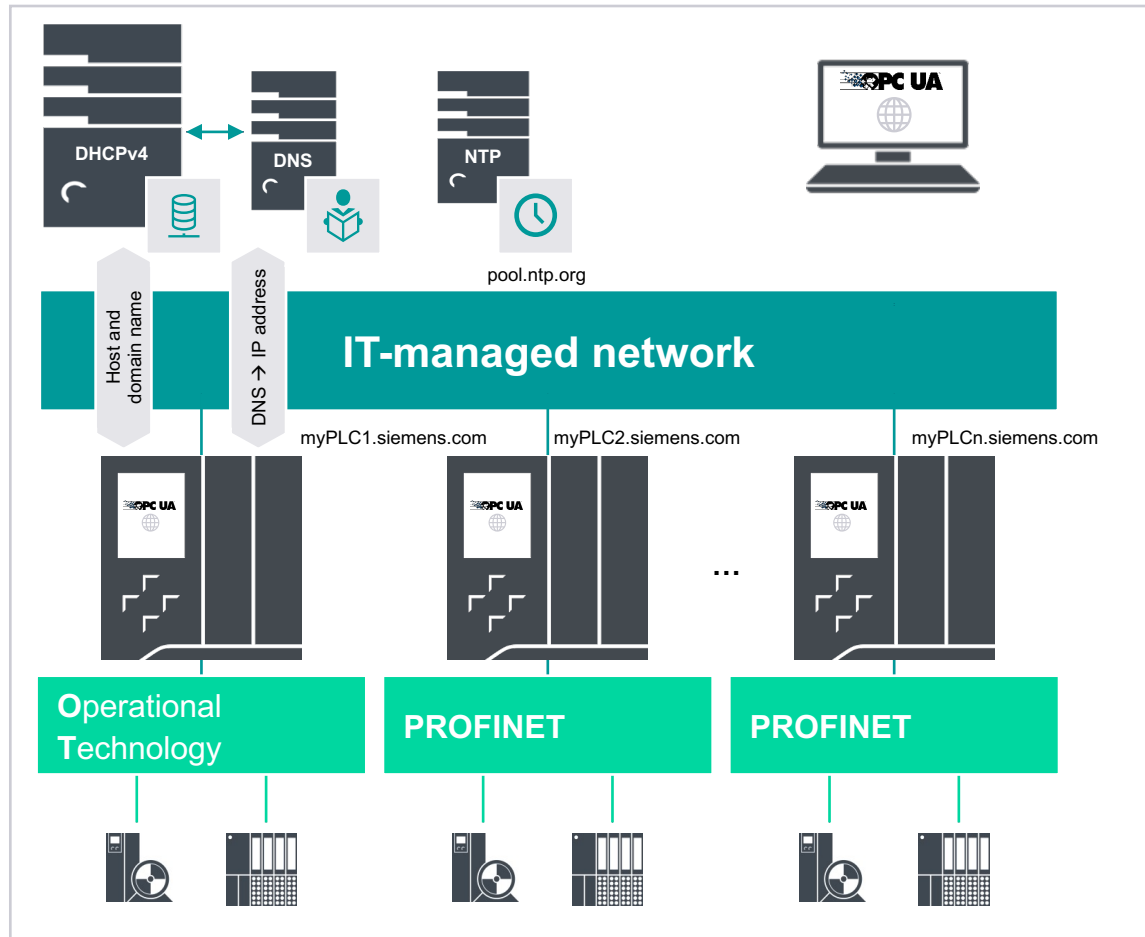
A "message burst" is displayed as "overload" and messages can be refreshed from the client.

Number of simultaneous messages:

PLC Type	Small	Middle	Big
System Diagnostics	50	100	200
Program Alarms	100	200	400

DNS for SIMATIC S7-1500- and ET 200-CPU

Name-based addressing



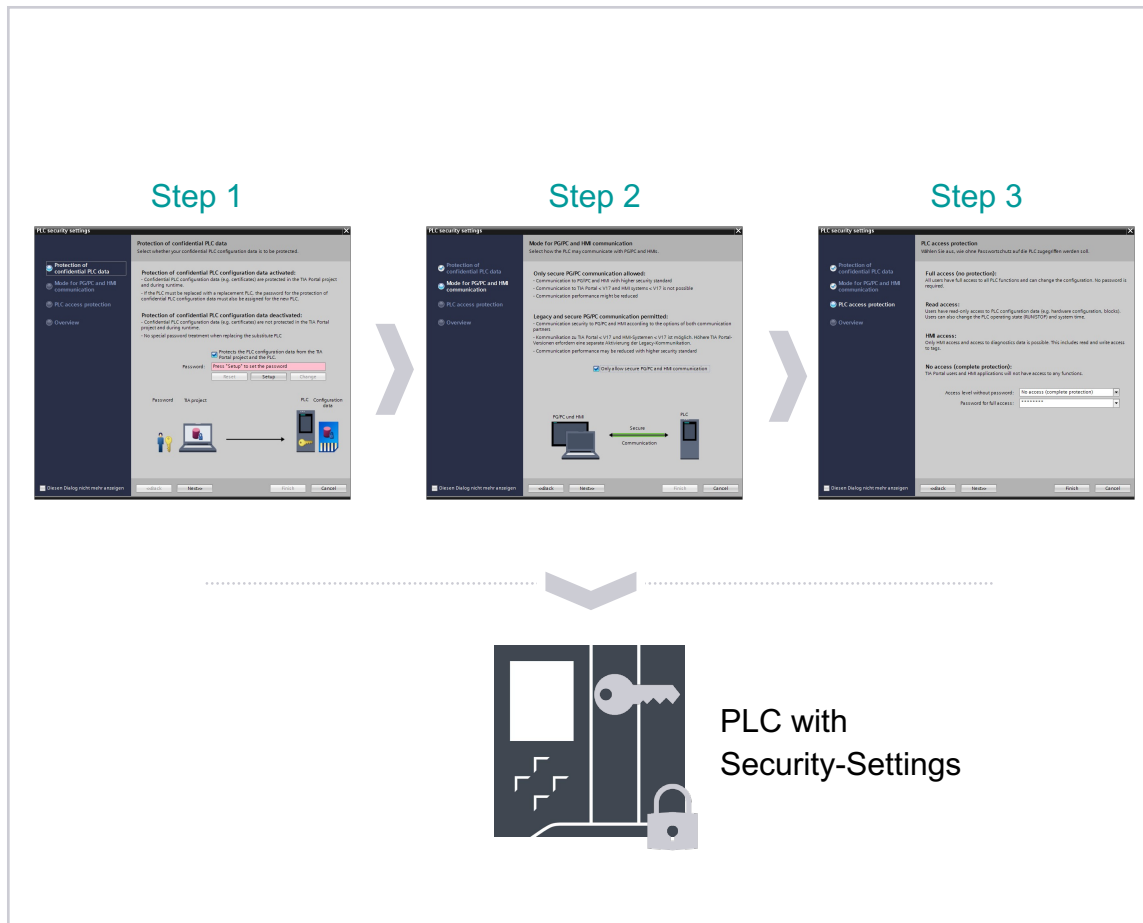
DNS – Domain Name System

- **New:** The DNS server addresses can be obtained from the CPU via DHCP.
- **New:** The CPU can obtain host and domain names from a DHCP server for applications realized with OPC UA or (secure) OUC.
- **New:** The CPU can transfer configured host or domain names to DHCP servers coupled with DNS servers for dynamic alignment (dynamic DNS).
- **New:** The CPU's NTP client can address NTP servers by name.
- **New:** New "CommConfig" instruction allows network parameters to be written or read, such as IP suite, DNS server, host and domain name.

Requirement: TIA Portal V17, CPU FW V2.9

System functions

Security Wizard for new PLC Security Mechanisms



Security Wizard

- The new Security Mechanisms are activated by default (Security-by-Default) in new PLC Firmware versions.
- When inserting a new CPU (S7-1500 FW v2.9, S7-1200 FW v4.5) a new Security Wizard appears automatically to configure the security mechanisms.
- Following configuration is done via the Security Wizard:
 - Protection of confidential PLC configuration data
 - Mode for secure PG/PC and HMI Communication
 - PLC Access Protection
- The Security Wizard can also be called again later from the Hardware Configuration.

Benefits

- Quick and easy configuration of the new PLC Security mechanisms in a single process step
- Supporting information to select suitable settings for own use case



Agenda for news in V17

- Which optional packages is released ?
- Teasers about news in the V17
- Extended Library features
- New editors coming up with V17 Cause Effect Matrix
- I Device new features
- Faster safety implementation and new features also with the 1500 R/H/HF family
- New features with OPC UA both for S7-1200 and S7-1500
- Security is and integrated feature for the SIMATIC systems
- Software as Perpetual and Subscription
- Extended Grace period for all TIA-portal engineering tools
- Coming up next time

TIA Portal Cloud – Top highlights at a glance

Your gateway to automation in the Digital Enterprise

Instant access to TIA Portal and options covering engineering and simulation



Secure data storage in the cloud



Flexible payment models with subscription & pay-per-use



Access to previous TIA Portal versions

- TIA Portal V16
- TIA Portal V15.1

More coming soon



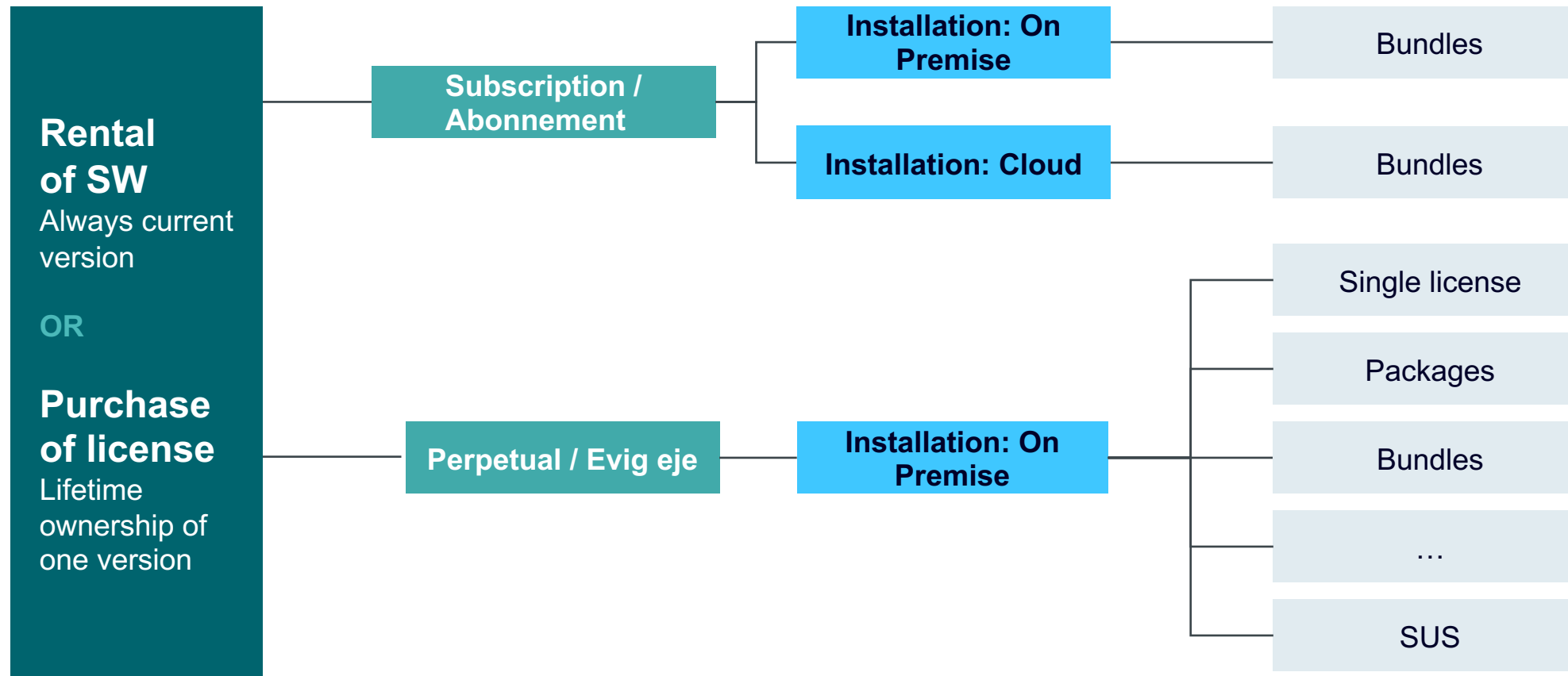
Always up to date software
→ no software maintenance



SIEMENS

TIA Portal V17

New payment and licensing models



Subscription available for TIA Portal Cloud

Package

STEP 7- WinCC- Safety- Basic

STEP 7 Professional

WinCC Advanced / Unified

Safety Advanced

PLCSIM Advanced

StartDrive Advanced

SINAMICS DCC

Test Suite

SiVArc

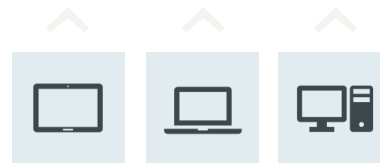
Energy Suite

TIA Portal Cloud

New



Hosting as VM (Lift-and-shift)



www.siemens.com/tia-portal-cloud

www.premiumservices.siemens.com


New business model

Subscription
unlimited access

Subscription
Immediate access once required, 4 different sizes
Basic, Engineering, Simulation and Full package

Freemium
Time limited offer to access TIA Portal Cloud for Basic
Engineering with STEP 7 Basic, STEP 7 Safety Basic
and WinCC Basic

SIEMENS

The background features a complex network of blue dots of varying sizes, connected by thin, light blue lines, creating a star-like or molecular structure against a dark blue gradient.

TIA Portal V17 Licenses and Grace Period Offer

Exclusive SUS offer, valid until 2021/08/31

SIEMENS

TIA Portal V17 Grace Period Offer

Exclusive SUS offer for TIA Portal products valid until 2021/08/31

TIA Portal Engineering

STEP 7 Professional

STEP 7 Professional COMBO

STEP 7 Basic

WinCC Basic

WinCC Comfort

WinCC Advanced

WinCC Professional

WinCC Unified

SINAMICS Startdrive Advanced

TIA Portal Eng. Options

STEP 7 Safety Advanced

STEP 7 Safety Basic

TIA Portal Multiuser Engineering

S7-PLCSIM Advanced

SIMATIC Energy Suite

TIA Portal Teamcenter Gateway

SIMATIC Visualization Architect

SINAMICS DCC Combo

TIA Portal Runtime

SIMATIC WinCC RT Professional

SIMATIC WinCC Client for RT Prof.

Precondition

A valid license for version V16 of the SUS capable TIA Portal base product

Delivery of the SUS download product

... **earliest (after verification)**



A new **first delivery** of the Certificate of Contract (CoC) via e-mail.

... **and within 1 – 3 business days**
(after TIA Portal V17 delivery release)



The **SUS delivery** (download link) with TIA Portal V17 upgrade via e-mail



| Kontakt

Michael Nielsen

michael.nielsen@siemens.com

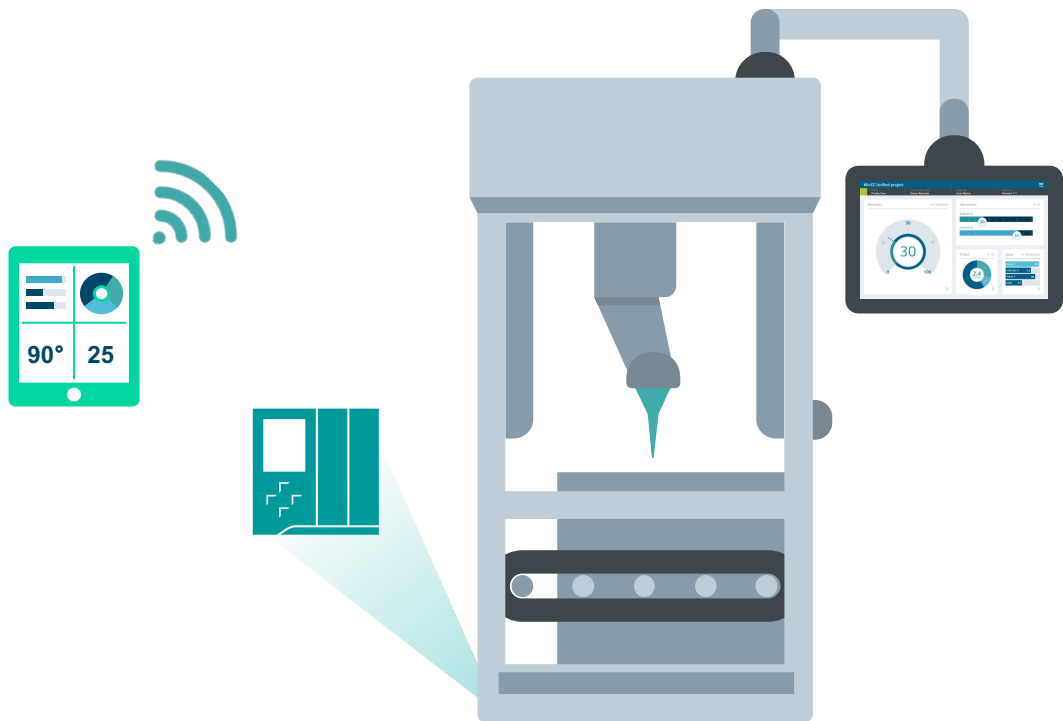
Ole Dyval

ole.dyval@siemens.com

SIEMENS



Basic informations for the field test and the service cases, without programming



HMI Panel

Standard Visualisation for the controlling of the machine for the end-user. Include every thing that you need for a 24/7 use (ie. Alarms and logging).

View of Things (VoT)

Gives the possibility to implement simple visualisation directly on the Controller. Can be service and KPI values shown on a Smart solution via the browser. This is fully programmed via WinCC Unified and works autonomic also for the S7-1500.

Næste webinar

WinCC Unified V17 - nyheder

Flere brugere, enkel opbygning af websider
og større fleksibilitet

Fredag den 25. juni kl. 11.00
www.siemens.dk/di-webinarer



SIEMENS

WEBINARER MED INSPIRATION, VIDEN OG VÆRDI

Industry Information Live

Tilmeld dig, se og gense på
www.siemens.dk/di-webinarer



Tilmeld dig på
www.siemens.dk/di-tilmeld-nyheder

Du finder også vores nyheder på
www.siemens.dk/di-nyheder

NYHEDSBREVE TIL INDUSTRIEN
UDKOMMER 8-10 GANGE OM ÅRET

Industry Information News

TIPS OG TRICKS PÅ YOUTUBE

Industry Information Demo

Find hurtigt playlisten og abonner via
www.siemens.dk/di-demo

