

Reyrolle 7SR45 – Argus

Self / Dual Powered Over current Protection

siemens.com/reyrolle

Description

The 7SR45 numeric relay provides both definite time and inverse time over current and earth fault protection functions ensuring sensitivity with a minimum operate setting of $0.2 \times I_n$ for phase over current protection. The relay is CT powered with an option for connection to an external auxiliary supply to provide additional security and communications port for connecting to SCADA. The compact non draw-out design provides front fascia navigation keys, LCD and front USB port for ease of use.

Main Function	Over current and Earth Fault Protection
Inputs and Outputs	4 Current Transformers With 1A or 5A Inputs, 2 or 4 Binary Inputs & 2 or 4 Binary Outputs, Pulse Output & Remote Flag Output
Communication	Front USB port (for configuration via Reydisp) Rear RS485 (optional)
Housing	Size 4 - non draw-out case with mounting options available in standard 4U rack height or height reduced side mounting arrangement

Benefits

- CT powered with option for external auxiliary supply connection
- Dedicated switch-on-to-fault (SOTF) protection
- Self monitoring – Including battery condition monitor
- High sensitivity – Trip ready at 20% of I_n (single phase) & 13% of I_n (three phase) via low power pulse output or binary output
- Intelligent power management – Fail safe start up and shut down modes
- Internal lithium battery back-up for viewing fault data, setting the protection and resetting of indications



- Easy setting via the front fascia or using the Reydisp Evolution software via USB port
- Mechanical flag indication
- 2 case options for mounting in various size RMU's

Applications

- Protection relay for Ring Main Units without auxiliary power supply back up.
- Incomers, Feeders and MV/LV transformers
- Panel refurbishment of old electromechanical protection relays.

Protecting your electrical assets... today and tomorrow

Protection Functions

- 50 Instantaneous Over current
- 50N/G Instantaneous Derived/Measured Earth Fault Protection
- 51 Timed Delayed Over current Protection
- 51N/G Time Delayed Derived/Measured Earth Fault Protection
- 50LC/SOTF Switch-On-To-Fault

Ancillary Functions

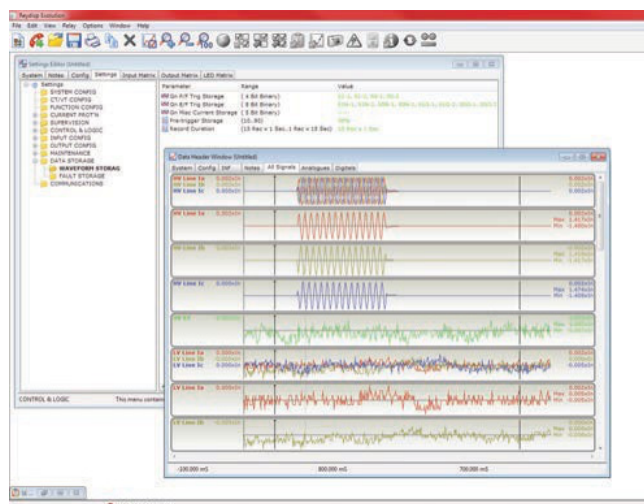
- 49T High speed external trip via BI
- 68 Protection Function Blocking/Inrush current blocking
- 86 Lockout

Communications

- IEC60870-5-103
- MODBUS RTU

Reydisp Software

Our user friendly PC software tool ensures a smooth installation providing an efficient and intuitive interface to the relay.



Siemens Protection
Devices

North Farm Road
Hebburn
Tyne & Wear
NE31 1TZ
United Kingdom

For enquires please contact our
Customer Support Center

Phone: +49 180/524 8437 (24hrs)
Fax: +49 180/524 24 71
E-mail: support.ic@siemens.com
www.siemens.com/protection

Article No. EMEA-B10021-00-76GB
Printed in the UK

Subject to changes and errors.
The information given in this document only contains general descriptions and / or performance features which may not always specifically reflect those described or which may undergo modification in the course of further development of the products.

The requested performance features are binding only when they are expressly agreed upon in the concluded contract.