

# SIMATIC WinCC Unified System



# Human Machine Interface is changing...



## Increase of production data

The amount of data generated annually will increase by five times until 2025. (175 Zettabyte)



## Increasing number of devices and systems to connect

Gartner IT forecasts that the number of IoT devices will reach 25 billion by 2021



## Upcoming user interaction scenarios

Expected sales of virtual reality equipment by 2022: 26.7 million devices (0.8 million in 2018)

# If you want to master this change you have to deal with...

## Web Technology

Scalability Manufacturing IT Collaboration Object orientation

SVG **Device independency** Openness Plant Intelligence

Everywhere Access

Engineering Automation One Engineering **Data Backbone** HTML5

**On Premise** IT-Integration Edge computing Connectivity Usability

Digitalization **Cloud Connectivity**

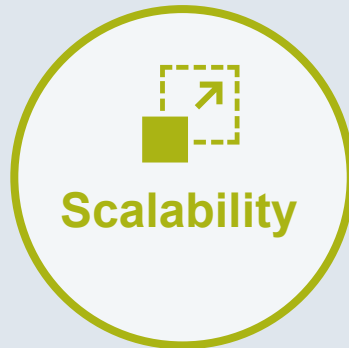
– ”

These topics define the requirements for the HMI systems of the next decade.

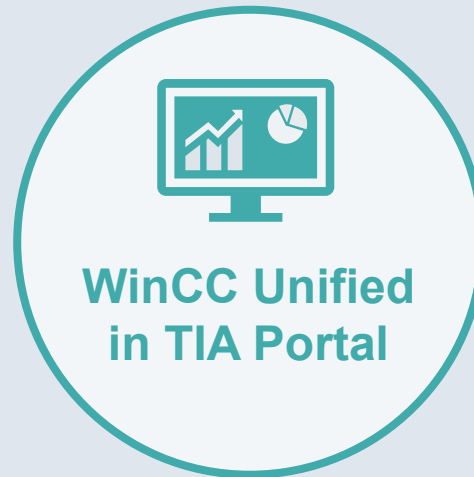
# We meet these requirements with the new WinCC Unified system!



- **Native Web Technology**HTML5, SVG, JavaScript
- Device independent
- Object oriented – HMI



- **One Engineering**
- Unified Comfort Panels
- WinCC Unified PC
- **Collaboration**



- On Premise
- Unified @Cloud
- Unified @Edge
- MindSphere Apps



- Basis for Digitalization
- Plant Intelligence
- Integration Platform for everything north of the PLC
- **Openness**

# SIMATIC WinCC Unified System V16 – Overview



Platform

Unified Comfort Panels, PC



Common engineering  
for all platforms



Software

SIMATIC WinCC Unified  
in TIA Portal V16



# SIMATIC HMI Unified Comfort Panels

## Seeing what matters- in a brilliant way



### New generation High-End Operator Panels from 7 to 22 Inch



#### Feature / Function

- Durable glass front with capacitive multitouch technology
- Expand the standard functionality with apps
- Significantly increased hardware performance and system limits
- Protected operating system and encrypted communication technologies
- Visualization powered by SIMATIC WinCC Unified

#### Benefit

- Maximum usability through enhanced legibility and brilliant colors
- Implement project-specific requirements easily
- Implement applications with a larger quantity structure
- High level of IT security to protect the system against cyber attacks
- Latest technology for today's and tomorrow's requirements to HMI systems

# SIMATIC WinCC Unified – One common HMI platform

**SIEMENS**  
*Ingenuity for life*



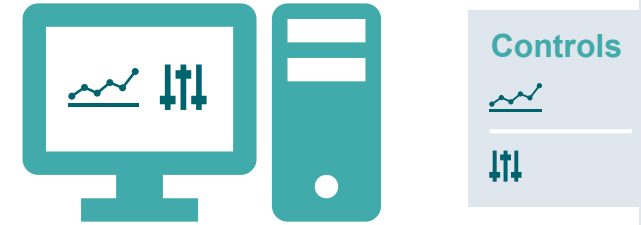
## Faceplates

Use the same faceplates for Panel- and PC Systems.



## Screen structure

Consistent structuring of screens with picture windows.



## Controls

Common UI Controls for Panels and PC to ensure the best Usability.



# SIMATIC WinCC Unified PC



# SIMATIC WinCC Unified PC – Highlights



## Scalability from panel to control center

One common software platform for all devices



## Modern User Interface based on web technologies

Flexible access with any modern web browser



## Advanced scripting based on JavaScript

Powerful and platform independent scripting language



## Automate engineering tasks with TIA Portal Openness

Create, validate and reuse WinCC Unified components automatically



## Technological hierarchy for object oriented engineering

Define plant assets once and reuse them by instances



## Calendar and Performance Insight Option

Manage working times and get production insights based on individual KPI calculation



## Easy collaboration of WinCC Unified systems

Setup of distributed configurations. Predefined as well as on the fly access



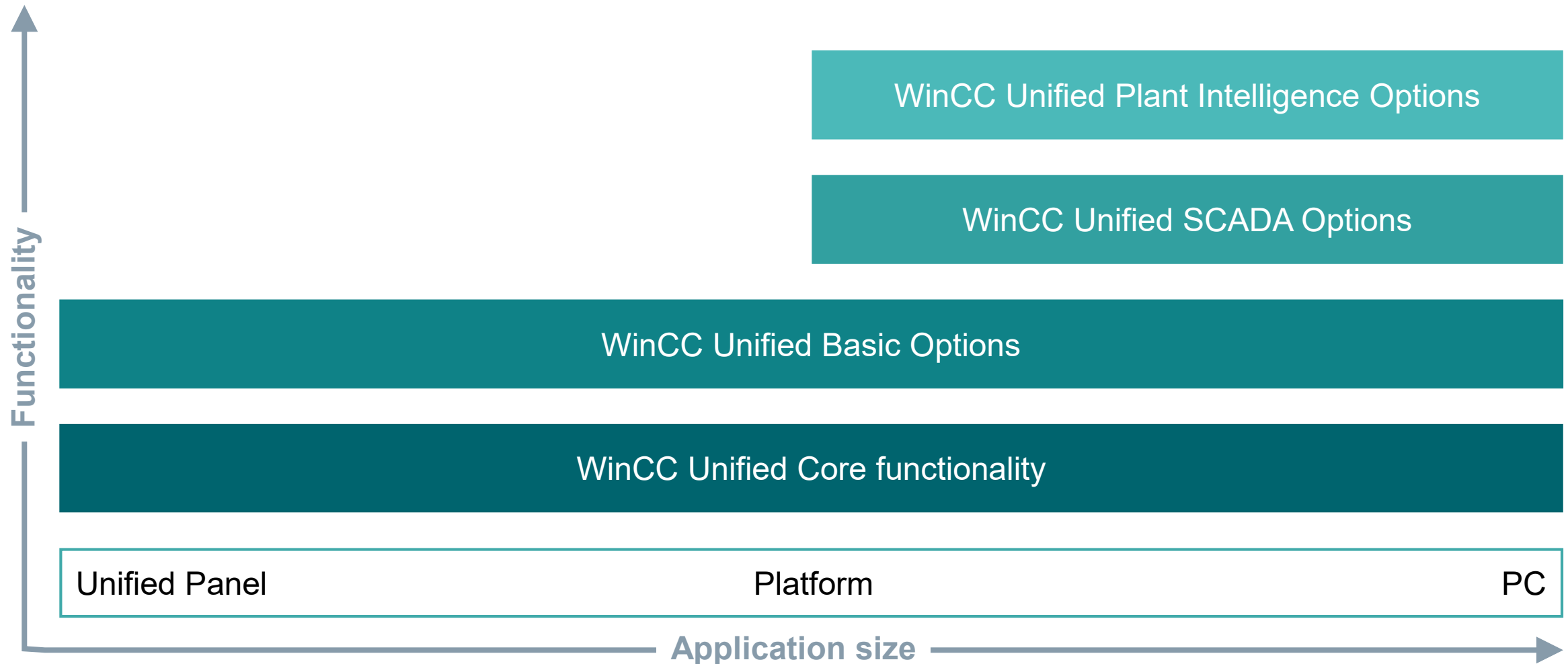
## Use WinCC Unified as Integration Platform

Integrate IT-Tools into one user interface and exchange data via interfaces



# Scalable from Panel to SCADA solution

## Seamless functionality and usability



# WinCC Unified V16

## Core functionality



Core functionality	Description	Unified Comfort Panels	Unified PC Runtime
User Interface	Scalable for all devices	✓	✓
Connectivity	Connecting automation and IT via standard interfaces	✓	✓
Alarming	Know what's happening at your facility	✓	✓
Reporting	Reporting functionality (based on Microsoft Excel)	✂	✓ <sup>1</sup>
Scripting	Extensive scripting possibilities for Runtime	✓	✓
Openness Engineering	Shorten Time to Market using automated engineering	✓	✓
Openness Runtime	Expand runtime functionality and serve as integration platform	✓	✓
Technological Hierarchy	Modular and standardized machine and plant concepts	✂	✓
User Administration	Local user management and access control	✓	✓

<sup>1</sup> Automated reports optional

Available
 Available (limited)
 In work
 Not available

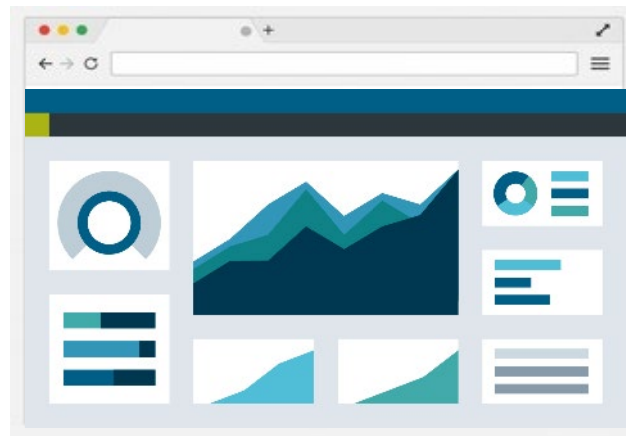
# WinCC Unified – Modern User Interface

A great experience. No matter where you are!



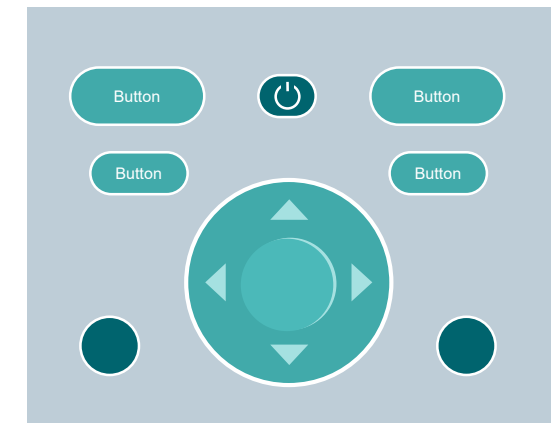
## Based on Web Technologies

Like HTML5, SVG and JavaScript.  
Lightweight user interface with all the possibilities you're used to.



## Access from Everywhere

With any modern web browser.  
No need for installing extra plugins –  
Also on mobile devices.



## Customize and Animate

Use Dynamic SVGs or Custom  
Web Controls to make your HMI  
stand out.



# WinCC Unified – Scripting – Advanced scripting with the power of JavaScript

```
export function Funtion (parameter1, parameter2){  
    let tag1 = Tags('MyTag1');  
    tag1.Write(123);
```

```
    let tag2 = Tags('MyTag2');  
    tag1.Write(123);
```

```
    if (tag1 > 100){
```

```
        UI.RootWindow.
```

```
        HMIRuntime.
```

```
    } else {
```

```
        HMIRuntime.
```

```
    }
```

```
}
```



## JavaScript is a widely spread and easy to learn scripting language

- One scripting language for all platforms (Panel and PC Systems)
- Use the entire object oriented JavaScript scope for handling data, objects, classes, inheritance
- Predefined Code Snippets for common tasks available in TIA Portal
- Integrated debugging functionality
- Local scripts for e.g., screen dynamics, events and scheduled tasks. Support of global script functions
- Direct access to WinCC Unified JavaScript object model e.g., access to file-system or databases

# WinCC Unified V16

## Access from Everywhere



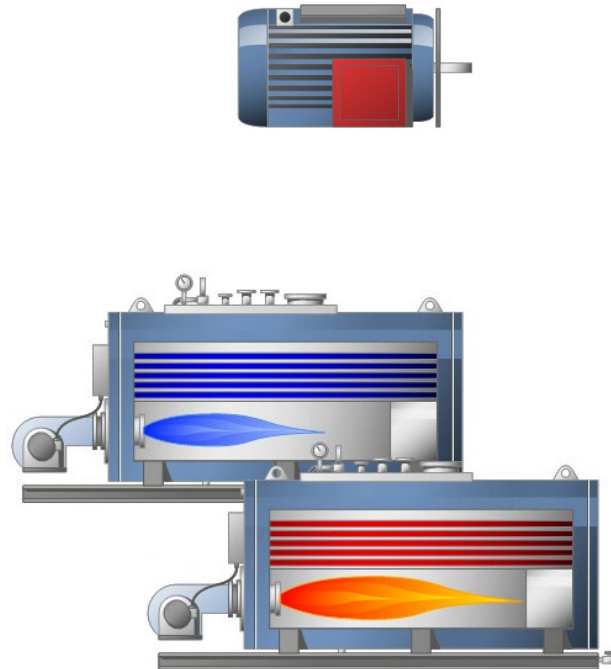
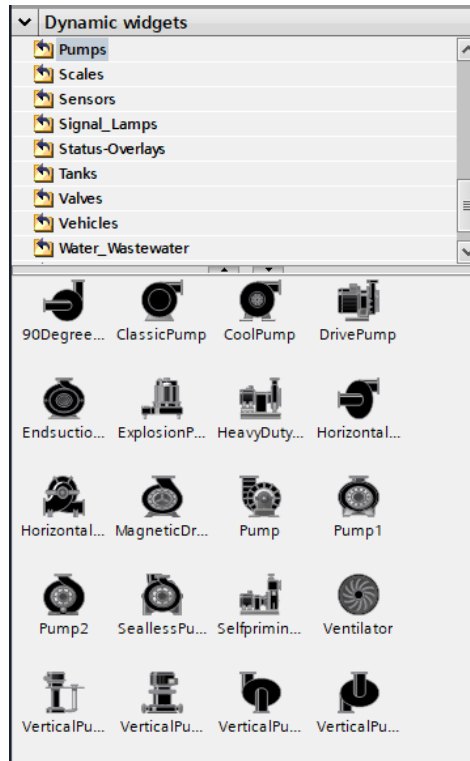
Operating System (Client)	Recommended Browser
Microsoft Windows	<ul style="list-style-type: none"><li>• <b>Google Chrome</b> (Test focus)</li><li>• Mozilla Firefox,</li><li>• Microsoft Edge</li></ul>
Android	<ul style="list-style-type: none"><li>• <b>Google Chrome</b> (Test focus)</li><li>• Firefox</li><li>• Edge</li></ul>
iOS, Mac	<ul style="list-style-type: none"><li>• <b>Safari</b> (Test focus)</li><li>• Google Chrome</li><li>• Firefox</li><li>• Edge</li></ul>



# WinCC Unified V16 – User Interface Customize and Animate

Unified Comfort Panel ✓

PC ✓





**Scalable Vector Graphics (SVG)**  
for all resolutions without loss of quality

- **Animate (dynamic) SVG files** according to the process state
- **Ready to use industry library** with static and dynamic SVGs

# WinCC Unified V16

## Overview Controls

Unified Comfort Panels		Unified PC Runtime
✓	Screen Window	✓
✓	Faceplate Container	✓
✓	Web Control	✓
✓	Alarm Control	✓
✓	Trend Control	✓
✗	Process Control	✓
✗	Trend Companion	✓
✗	Function Trend Control	✓
✗	Media Player	✓

 Available
  In work



# WinCC Unified – TIA Portal Openness



## Higher engineering quality in less time



### Configurator

Build your machine configurator with a .net programming language and build a UI that fits your needs.

### TIA Portal

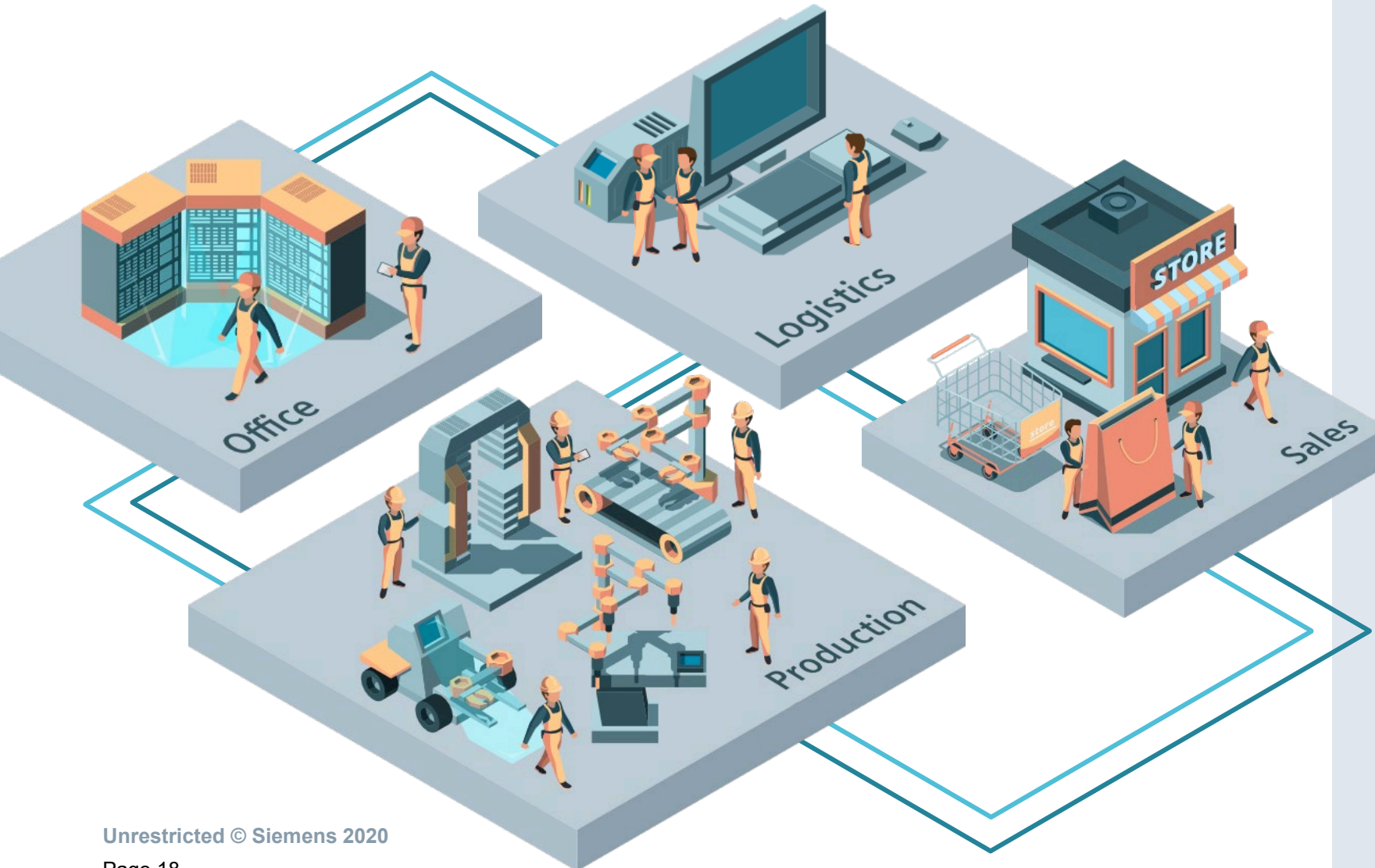
Get access to existing assets or create them automatically from scratch via the Openness API.

### Projects

Create individual project configurations within seconds. Reduce risk and save time.

**Engineering automation is the power booster for your workflow**

# WinCC Unified as integration platform – Connect and integrate 3rd party tools

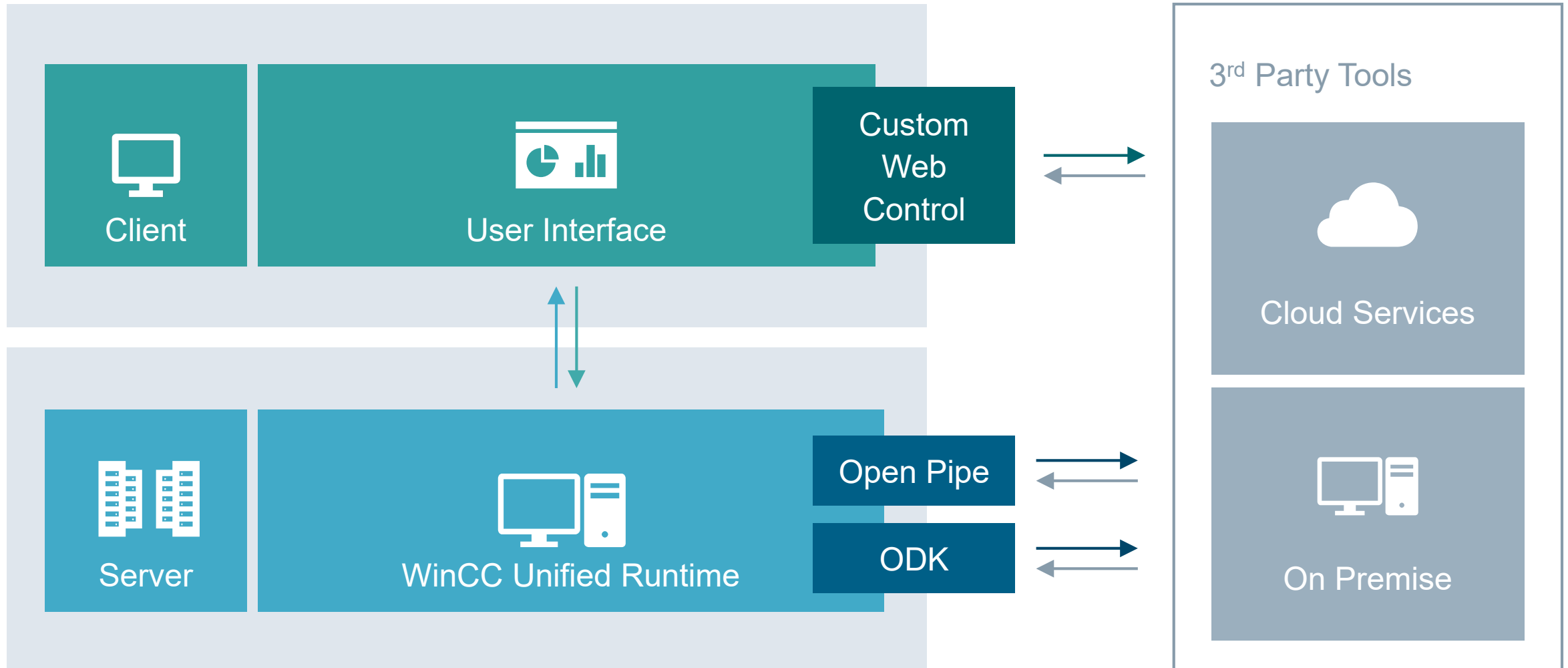


Different departments use  
different software system

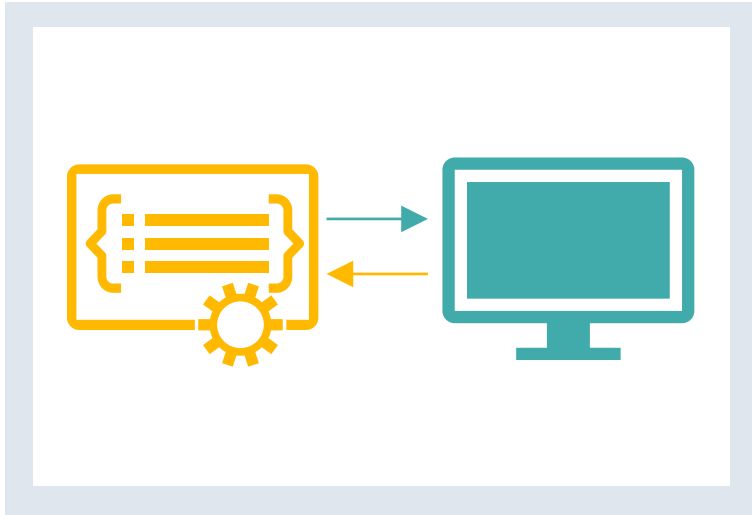
Digitalization requires  
seamless data flow

Open interfaces are required  
for all systems

# WinCC Unified – Integration platform – Connect and integrate 3rd party tools



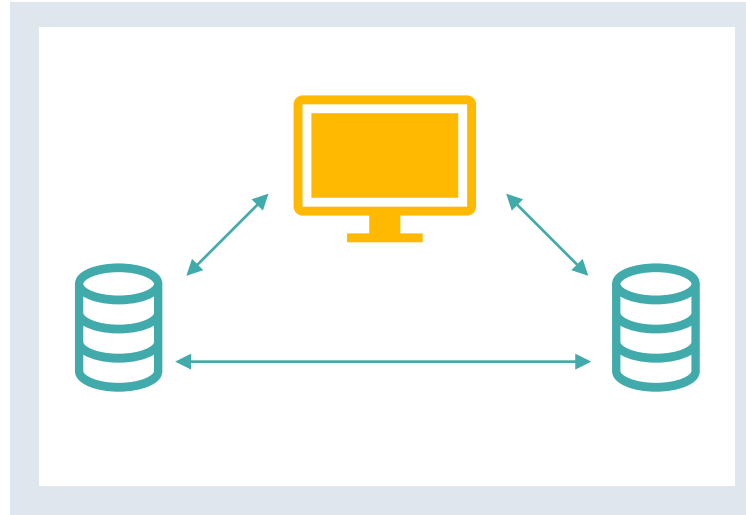
# WinCC Unified – Integration platform – Examples



## Open Pipe Data Interface

Server sided data interface  
for online tags and alarms.

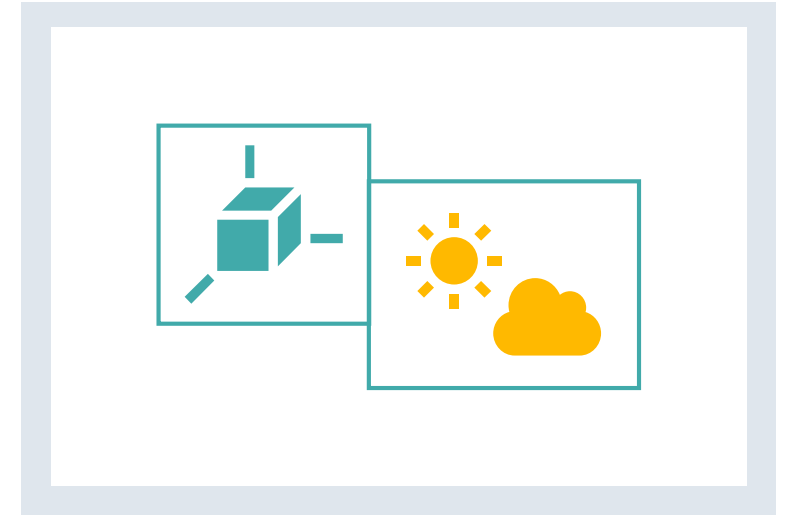
Independent from programming language.  
Can be used to connect several software  
tools to WinCC Unified.



## Runtime Openness Data Interface

Server sided data interface for online  
and historical tags and alarms with  
.net or C++ programming.

Exchange huge amounts of data  
with Databases or IT systems.



## Custom Web Control Container for Web Content

Add custom UI controls (e.g. 3D Viewer)  
or visualize and exchange data of 3rd party  
services (e.g. weather data). Can be used  
to get access to sensors of mobile clients  
(e.g. camera, GPS)



# ODK vs. OpenPIPE

## What are the differences?



Unified Comfort Panel ✂ PC ✓

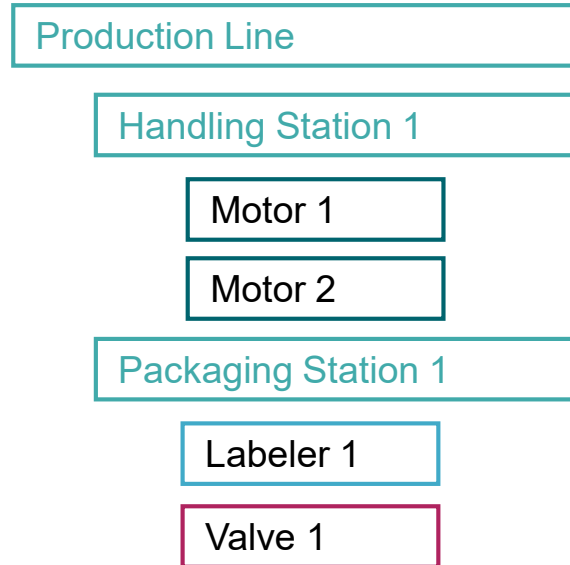
Unified Comfort Panel ✓ PC ✓

### Open Developer Kit (ODK)

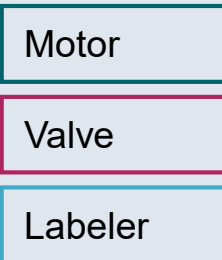
### OpenPIPE

Extensive runtime object model	Type	Lightweight interface
Large quantities	Data quantity	Low to medium
High	Data throughput	Low to medium
C#/C++	Programming languages	Language independent e.g.: C#, C++, JavaScript, PowerShell, ...
Online and Logging Tags, Archives, Alarms, Users, Technological Hierarchy plant objects	Read/Write access to data of WinCC Unified data	Online Tags, Alarms (read only)

# WinCC Unified – Technological Hierarchy – Define plant assets once and reuse them by instances

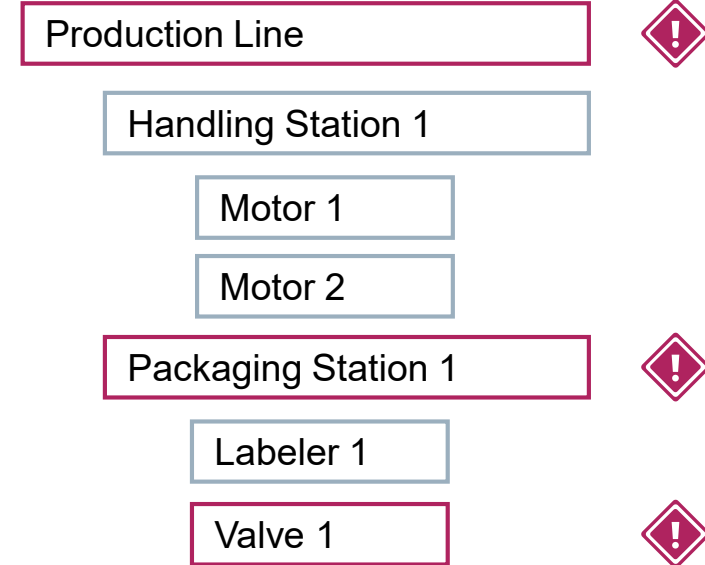


## Types



## Object oriented engineering approach

Create a technological structure of your plant and build plant assets based on objects that can be updated centrally.



## Hierarchically structured operation

Use the technological hierarchy to navigate through all of your plant assets. Get a quick overview of system status based on a hierarchical alarm structure.

# WinCC Unified V16

## Basic Options

Basic Options	Description	Unified Comfort Panels	Unified PC Runtime
File-based Logging	Local data logging for small to medium applications	✓ (Logging Tags included)	✓ (Logging Tags optional)
Parameter Control	Consistent handling and operation of machine or production parameters	✓ (included)	✓
Collaboration	Establish distributed configurations	✂	✓
Clients	Flexible web-based, remote Monitoring and Operation	✂	✓
Audit	Documentation and validation according to legal requirements e.g., 21 CFR Part 11	✂	✂

 Available
  Available (limited)
  In work
  Not available

# WinCC Unified V16

## SCADA Options



SCADA Options	Description	Unified Comfort Panels	Unified PC Runtime
Database Option	Performant, large-scale and long-term managed logging	✗	✓
Redundancy	Increased availability	✗	✂
Central Logging	Central long-term database logging	✗	✂

✓ Available    ✓ Available (limited)    ✂ In work    ✗ Not available



# WinCC Unified V16

## Plant Intelligence Options



Plant Intelligence Options	Description	Unified Comfort Panels	Unified PC Runtime
Calendar	Calendar-based administration of events and schedules	✗	✓
Performance Insight	Visualization and analysis of asset performance with KPIs and time/state model	✗	✓

Plant Intelligence Options	Description	Unified Comfort Panels	Unified PC Runtime
Sequence Execution	Flexible arrangement of automatic steps within the production process including manual interaction	✗	✂
Line Coordination	Coordination and synchronization of machines/units via recipe-controlled procedures	✗	✓

 Available
  Available (limited)
  In work
  Not available

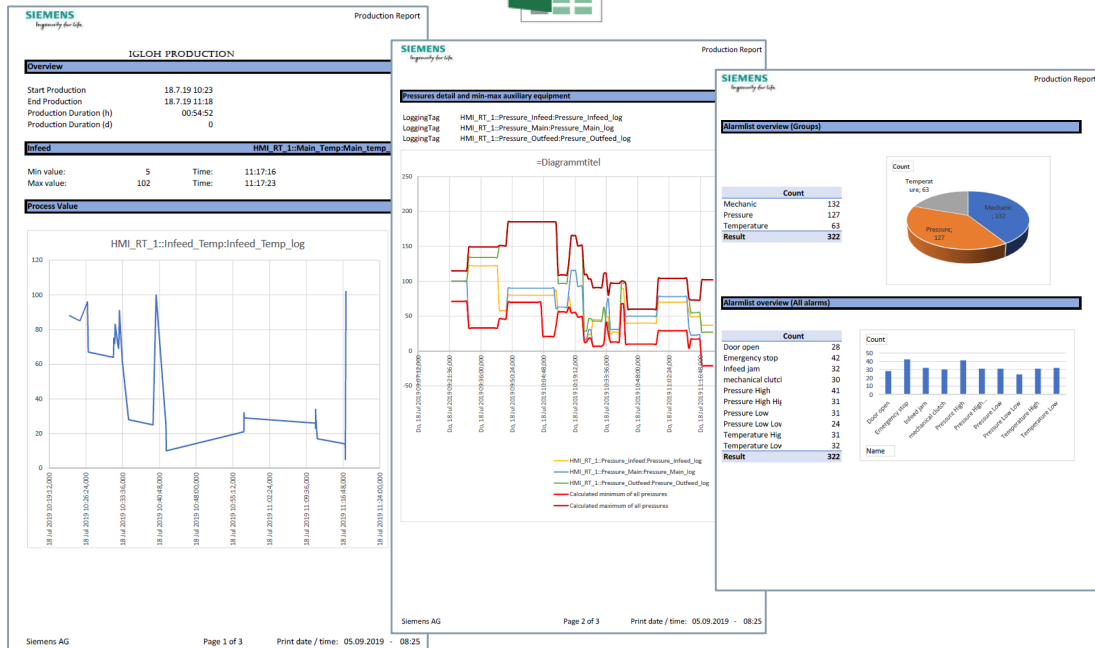
# WinCC Unified – Reporting

## Flexible reporting based on Office tools



Unified Comfort Panel 

PC 



**Flexible assignment and planning** of report execution at runtime.  
Consistent documentation of production data for all levels of  
production (product or quality report)

Create **fully customized report templates**  
with a tool you already know – Microsoft Excel<sup>1</sup>

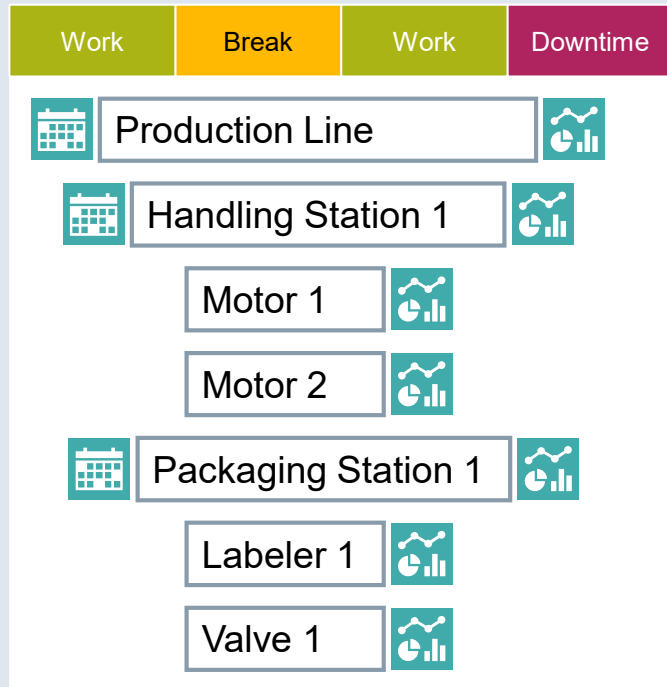
**On Demand Generation** – Trigger a report  
manually whenever you need it

**Automated generation** – Time-scheduled  
or event-triggered **reports – fully automatic**  
(optional)

<sup>1</sup> Please note the system requirements



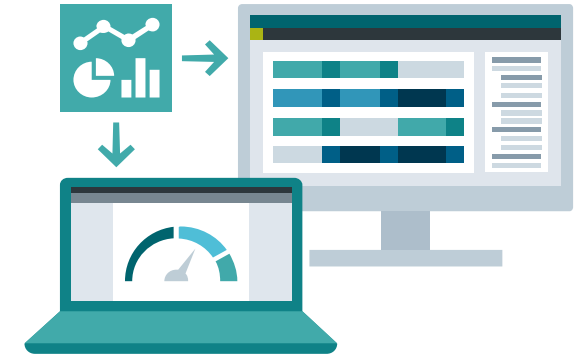
# SIMATIC WinCC Unified – Plant Intelligence - Calendar & Performance Insight



Standardized **Time model**  
as basis for Calendar and  
Performance Insight



**Calendar**  
Schedule activities for the  
production



**Performance Insight**  
Improving performance by  
calculating individual KPIs

## Plan your production shifts



## Schedule activities for the production

- Based on the technological hierarchy
- Define working time of machines and systems
- Create standard templates for regular production days and shifts.
- Planning the execution of activities relative to a timeline, for example, machine
  - start 30 minutes before early shift (ramp-up time)

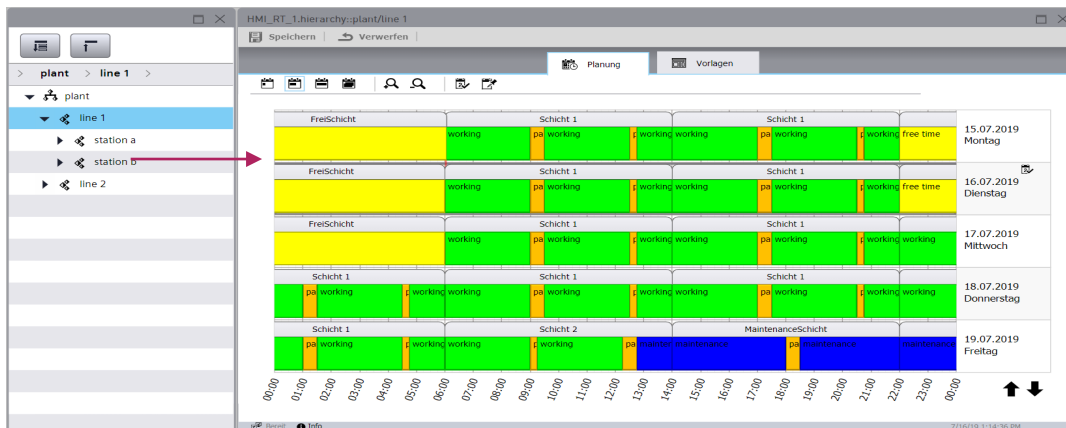
# WinCC Unified V16 – Plant Intelligence options

## Calendar

Unified Comfort Panel ✕ PC ✓

### User interface in the screen

Plant View Control using the Calendar Control



### Scheduling of shifts

for machines, plants and lines in the technological hierarchy

Management of working time and tasks based on templates

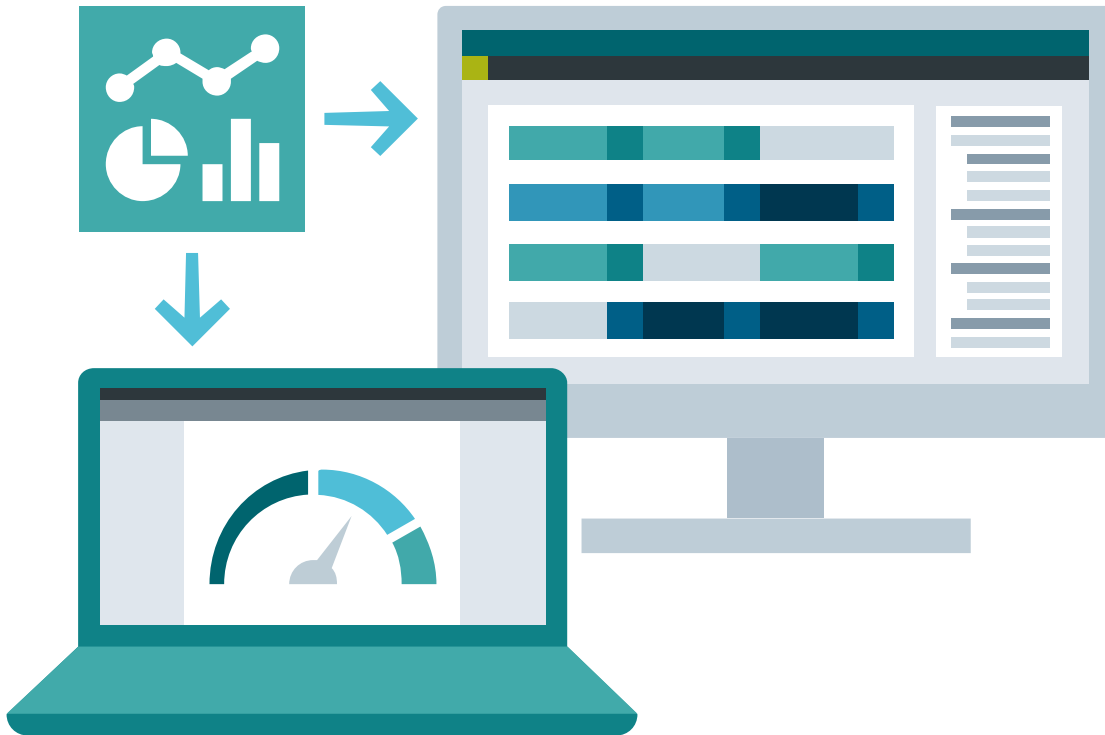
Planning the production process and events in relation to operating times, e.g. definition of shifts

### Reduced engineering effort

through modular and standardized object-oriented concepts

# WinCC Unified – Performance Insight Option

## Get value out of your data



### Production insights based on individual KPI calculations

- Global definition of KPI formulas according to ISO22400
- Object oriented KPI engineering based on technological hierarchy
- Comprehensive set of WinCC controls for the display of KPIs
- Downtime analysis
- Calculation of the performance of machines / lines / plants according to context (e.g. shift, order, etc.)
- Creating an Excel-based report



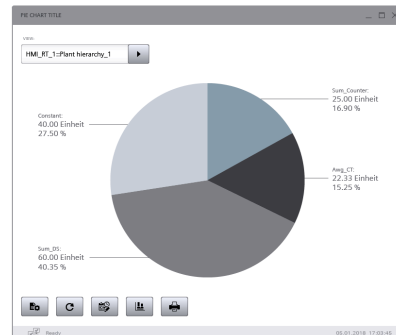
# WinCC Unified V16 – Performance Insight Controls

Unified Comfort Panel ✗ PC ✓

## Bar Chart



## Pie Chart



## Gantt Chart



## Display of KPIs and operands and their analysis

as bar or pie chart e.g.

- production operand
- piece counter "good parts"
- KPI (quality)

**Combined/multiline display of**  
machine status with duration  
and frequency analysis  
e.g. Downtime analysis of machines

# WinCC Unified – Collaboration – Making collaboration more flexible

## Exchange process data between WinCC Unified systems

- Every machine can provide different types of data to other WinCC Unified systems
- Share screens, tags, archives and alarms
- Access to data of other Unified platforms during Runtime



## Combine production data from several machines for supervision

- Setup of distributed configurations for lines and plants
- Increases the flexibility and simplifies the connection of different machines to one unified system
- Connect systems while commissioning or later

# Functional overview

WinCC  
Unified PC 16

## V16

- Native Web Client
- SVG graphics (static and dynamic)
- Controls with significantly increased functionality
- File-based Archiving or Database logging
- Picture window technology
- Advanced Scripting
- Dynamization of objects
- Open Pipe and ODK (Open Development Kit)
- Custom Web Controls
- Technological Hierarchy
- Collaboration (1st step - screens)
- Calendar Option
- Performance Insight Option
- Line Coordination System (LCS)

## > V16

- 3rd Party Communication
- Profibus Communication
- Native Client
- Audit/GMP
- RFID Autentication
- Two-hand operation & Multitouch
- Multi-monitor
- Central User Management
- System diagnosis control
- Redundancy
- OPC UA HA/AC (Client)
- Monitoring Client (License)
- Central database archiving
- Central reporting server
- Collaboration (2<sup>nd</sup> step – tags, archives)
- Sequence Execution System (SES)
- And more ...

# Get Started

---



# SIMATIC WinCC Unified System – Application Examples



Type	
TIA Portal Add-In Data 2 Unified	<a href="#">SIOS Download</a>
WinCC Unified Tag Simulator	<a href="#">SIOS Download</a>
WinCC Unified Demo projects	<a href="#">SIOS Download</a>
TIA Portal Library HMI Template Suite	<a href="#">SIOS Download</a>
Getting Started Edge @ Unified Comfort Panel	Soon
From Comfort to Unified Comfort Guideline	Soon

Available Q3/2020

**Basic  
SIMATIC WinCC Unified &  
Unified Comfort Panels**

**Description**

Learn how to create TIA Portal projects for Unified Comfort Panels and how to use them optimally.

**Short title**  
TIA-UWCCM

**SITRAIN personal**  
3 days classroom training

**Advanced  
SIMATIC WinCC Unified  
Scripting (JavaScript)**

**Description**

Learn to optimally use JavaScript in SIMATIC WinCC Unified without previous programming knowledge.

**Short title**  
TIA-UWCCJA

**SITRAIN access**  
~3 hours web-based training

Available Q3/2020

**Advanced  
SIMATIC WinCC Unified for  
PC systems**

**Description**

Learn how to use the functionalities and options especially available for PC Systems with WinCC Unified.

**Short title**  
TIA-UWCCPC

**SITRAIN personal**  
2 days classroom training



# WinCC Unified Community – Join us now for free!



Learn everything you need to get started with the WinCC Unified System



Discuss with other WinCC Unified users or prospects online



More than 90 minutes of videos in short on-demand clips

Join us now for free on  
[\*\*siemens.se/wincc-unfied\*\*](https://siemens.se/wincc-unfied)

# Ordering Information

---



# SIMATIC WinCC Unified V16

## License Compatibility Engineering - Existing customers

WinCC (TIA Portal) V16			
Engineering System valid for...	Comfort Panels	WinCC RT Adv.	WinCC RT Prof.
WinCC Prof. (max)	✓	✓	✓ (max.)
WinCC Prof. (4k)	✓	✓	✓ (4k)
WinCC Prof.(512)	✓	✓	✓ (512)
WinCC Advanced	✓	✓	✗
WinCC Comfort	✓	✗	✗



WinCC Unified (TIA Portal) V16	
Unified Comfort Panels	Unified PC Runtime
✓	✓ <b>(100k)</b>
✓	✓ (10k)
✓	✓ (10k)
✓	✓ (10k)
✓	✗

### Existing customers with WinCC (TIA Portal):

The license of WinCC (TIA Portal) is also valid for engineering using WinCC Unified (TIA Portal).

# SIMATIC WinCC Unified V16 Engineering – Ordering information



WinCC Unified Engineering	Package (DVD)	Online Software Delivery (OSD)
WinCC Unified Comfort ES	6AV2151-0XB01-6AA5	6AV2151-0XB01-6LA5
WinCC Unified PC (10k) ES	6AV2153-2FB01-6AA5	6AV2153-2FB01-6LA5
WinCC Unified PC (100k) ES	6AV2153-2GB01-6AA5	6AV2153-2GB01-6LA5
WinCC Unified PC (Max) ES	6AV2153-0XB01-6AA5	6AV2153-0XB01-6LA5
WinCC Unified PC (1k) ES Trial	6AV2153-2EB01-6AA7	Download via SIOS

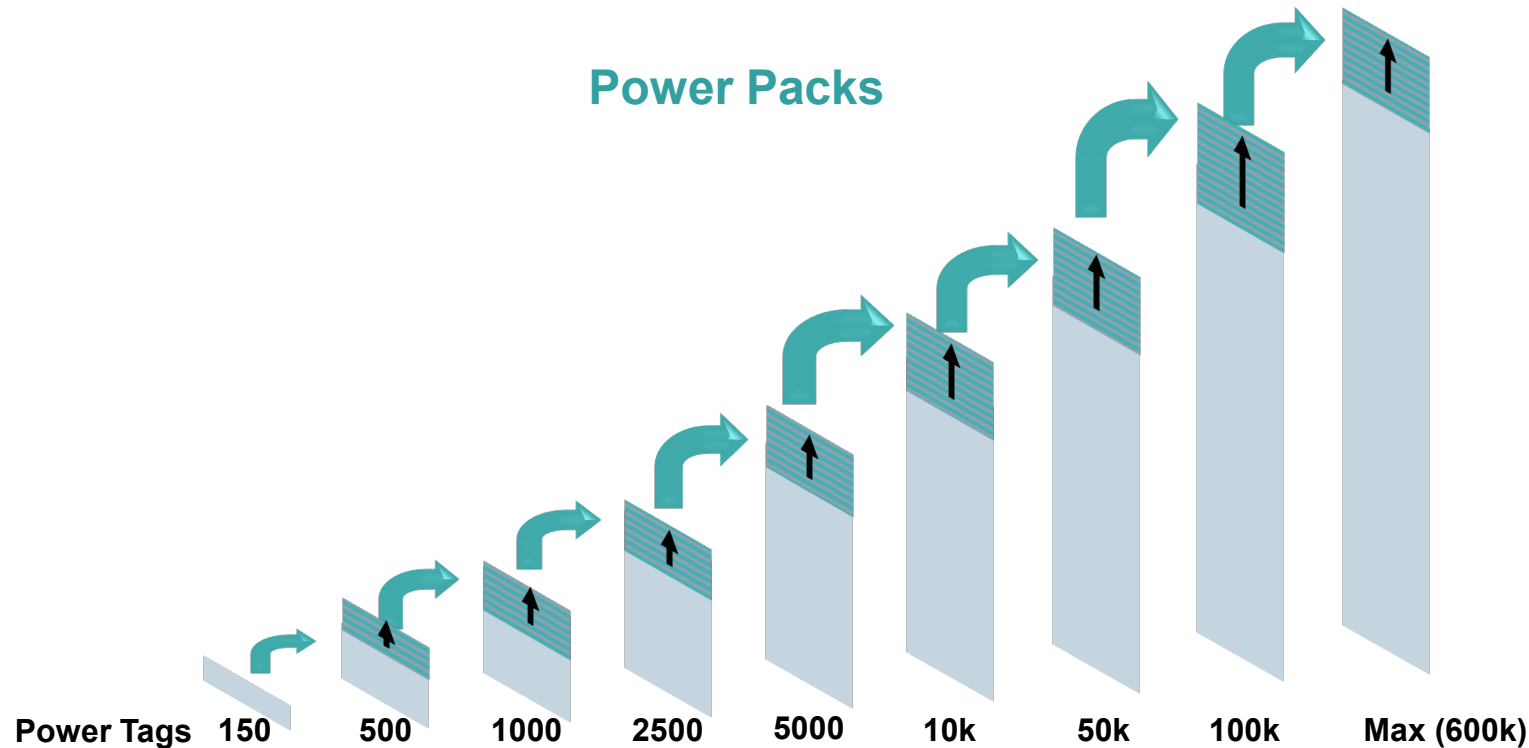
**The complete list for WinCC Unified  
(Engineering and Runtime) can be found in the product announcement here**  
<https://support.industry.siemens.com/cs/ww/en/view/109771724>

# SIMATIC WinCC Unified V16 - PC Runtime

## Licensing concept



WinCC Unified offers Base Packages with different number of Power Tags.  
The PowerPacks are used to expand the number of Power Tags, without effecting the overall price.



**Each WinCC Unified PC Runtime includes 2 Clients for local HMI and remote access.  
SimaticNET must be licensed extra, for more than 10 S7-connections.**

# SIMATIC WinCC Unified V16

## Ordering Information - PC Runtime



WinCC Unified PC RT System Base Packages	Package (DVD)	Online Software Delivery (OSD)
WinCC Unified PC (150) RT	6AV2154-3DB01-6AA0	6AV2154-3DB01-6LA0
WinCC Unified PC (500) RT	6AV2154-1EB01-6AA0	6AV2154-1EB01-6LA0
WinCC Unified PC (1k) RT	6AV2154-2EB01-6AA0	6AV2154-2EB01-6LA0
WinCC Unified PC (2,5k) RT	6AV2154-2MB01-6AA0	6AV2154-2MB01-6LA0
WinCC Unified PC (5k) RT	6AV2154-1FB01-6AA0	6AV2154-1FB01-6LA0
WinCC Unified PC (10k) RT	6AV2154-2FB01-6AA0	6AV2154-2FB01-6LA0
WinCC Unified PC (50k) RT	6AV2154-1GB01-6AA0	6AV2154-1GB01-6LA0
WinCC Unified PC (100k) RT	6AV2154-2GB01-6AA0	6AV2154-2GB01-6LA0
WinCC Unified Max RT (max.)	6AV2154-0XB01-6AA0	6AV2154-0XB01-6LA0

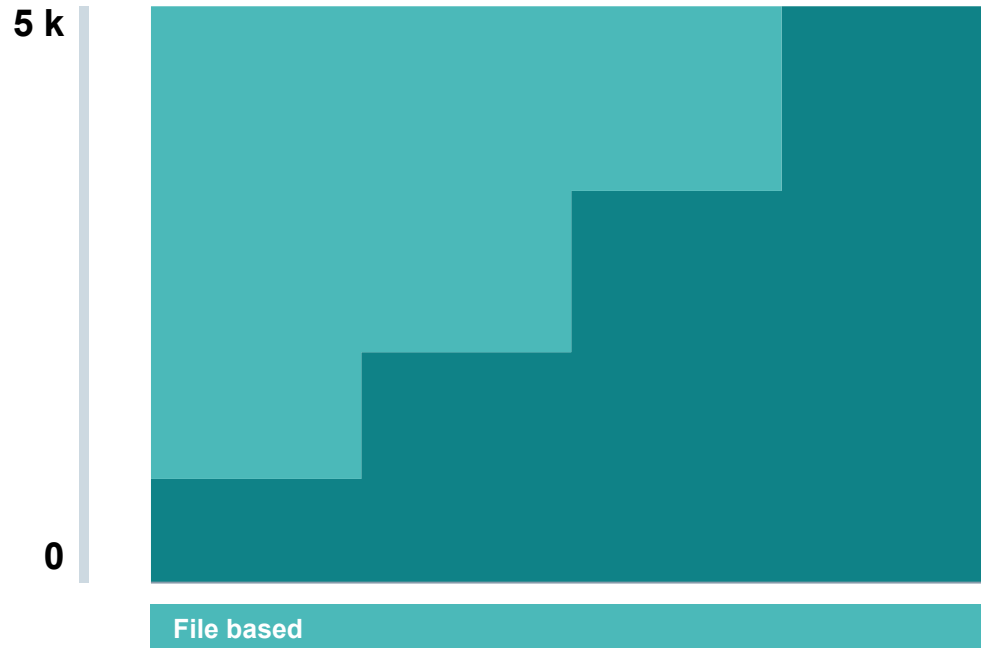


# SIMATIC WinCC Unified – Logging Tags

## Licensing concept – “file-based”

Unified Comfort Panel ✓

PC ✓



### Unified Comfort Panels

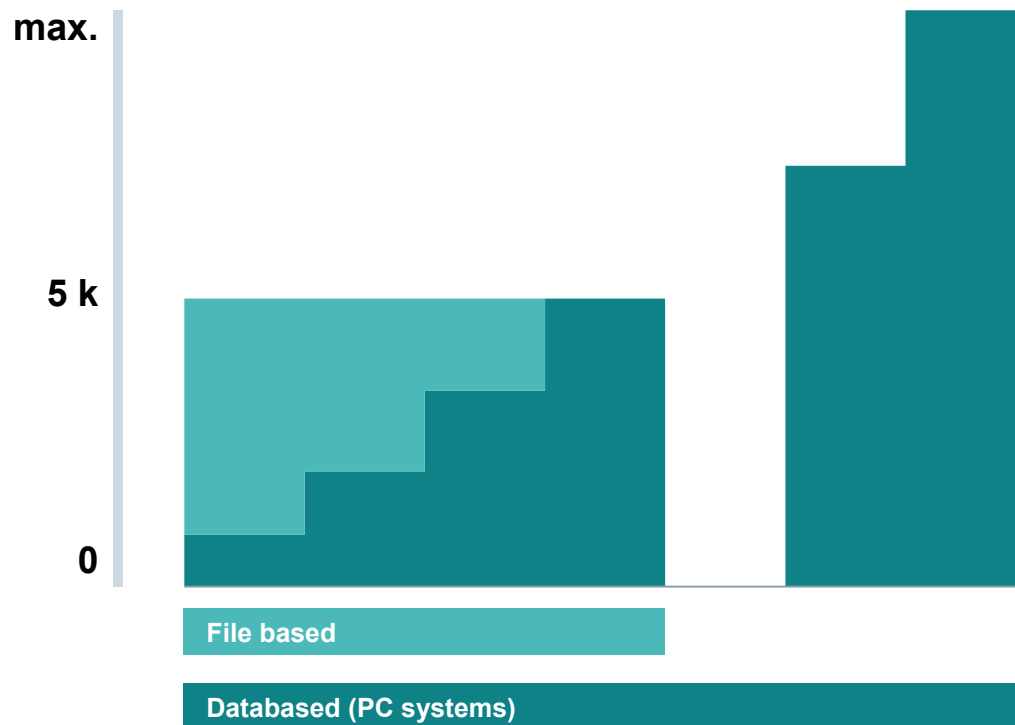
File-based Logging up to 5,000  
Logging Tags (included)

### Unified PC Systems

- File-based Logging up to 5,000 Logging Tags
- Licenses for Logging Tags:  
100; 500; 1,000; 5,000 (countable)

Possibility to change to Databased  
Logging for growing requirements

# SIMATIC WinCC Unified – Logging Tags Licensing concept



■ Filebased Logging ■ Databased Logging

## Unified PC Systems

Configure the logging system  
according to your requirements

- Databased Logging (optional), **scalable up to the maximum number of Power Tags**
- Licenses for Logging Tags:  
100; 500; 1,000; 5,000 (countable)

# SIMATIC WinCC Unified V16 - PC Options

## Ordering Information – Logging Tags

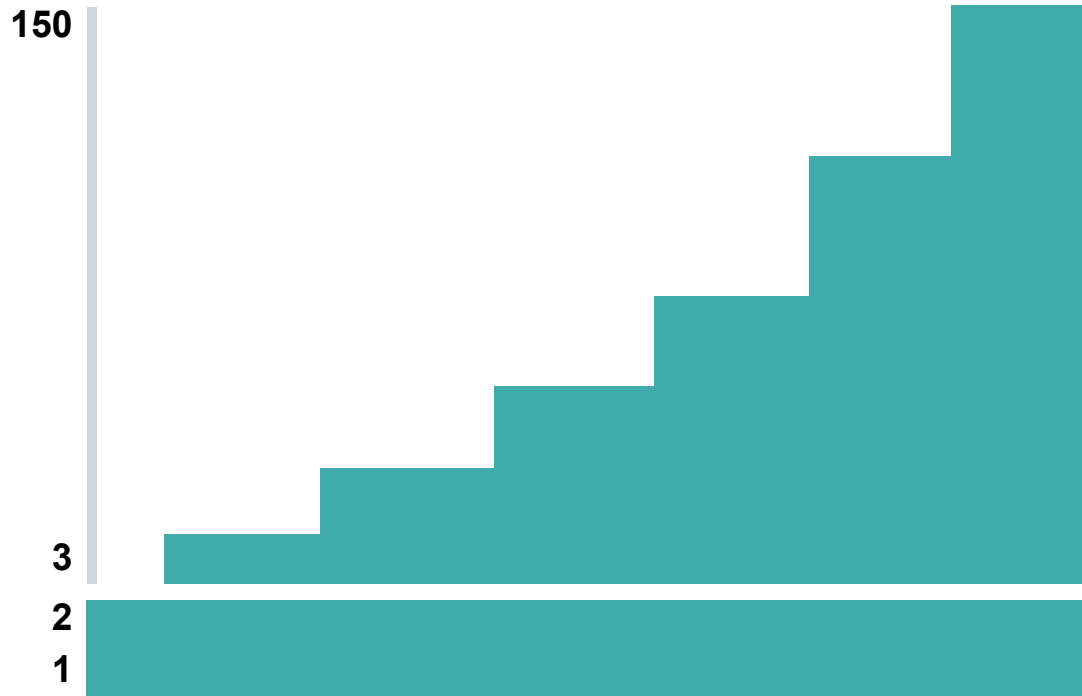


WinCC Unified Logging <sup>1</sup>	Package (DVD)	Online Software Delivery (OSD)
WinCC Unified Logging Tags (100)	6AV2157-2DA00-0AB0	6AV2157-2DA00-0LB0
WinCC Unified Logging Tags (500)	6AV2157-1EA00-0AB0	6AV2157-1EA00-0LB0
WinCC Unified Logging Tags (1000)	6AV2157-2EA00-0AB0	6AV2157-2EA00-0LB0
WinCC Unified Logging Tags (5000)	6AV2157-1FA00-0AB0	6AV2157-1FA00-0LB0
WinCC Unified Logging Tags (10.000)	6AV2157-2FA00-0AB0	6AV2157-2FA00-0LB0
WinCC Unified Logging Tags (30.000)	6AV2157-6FA00-0AB0	6AV2157-2FA00-0LB0

<sup>1</sup> independent of WinCC Unified version

**The total number of Logging Tags can be increased (countable) upon demand.  
Logging Tags are valid for file-based and databased (Database Option) logging.**

# SIMATIC WinCC Unified – Clients License concept



Client licenses are pooled at the WinCC PC Runtime station

**Unified PC Systems – Configure client access**  
according to your requirements

- **Two Clients are included** at every WinCC Unified Runtime (one of them is normally used for local visualization)
- Flexible remote access for any number of users (**concurrent access**)
- **Grow on demand** increase number of Clients by 1, 3, 10, 30, 100 (**countable**)

# SIMATIC WinCC Unified V16 - PC Options

## Ordering Information - Clients



WinCC Unified Clients <sup>1</sup>	Package (DVD)	Online Software Delivery (OSD)
WinCC Unified Client Operate (1)	6AV2157-1JW00-0AB0	6AV2157-1JW00-0LB0
WinCC Unified Client Operate (3)	6AV2157-3JW00-0AB0	6AV2157-3JW00-0LB0
WinCC Unified Client Operate (10)	6AV2157-2CW00-0AB0	6AV2157-2CW00-0LB0
WinCC Unified Client Operate (30)	6AV2157-6CW00-0AB0	6AV2157-6CW00-0LB0
WinCC Unified Client Operate (100)	6AV2157-2DW00-0AB0	6AV2157-2DW00-0LB0

<sup>1</sup> independent of WinCC Unified version

**The maximum number of concurrent Clients can be increased (countable) upon demand.**

# SIMATIC WinCC Unified V16 – PC Options

## Ordering Information



WinCC Unified Options (PC)	Package (DVD)	Online Software Delivery (OSD)
WinCC Unified Parameter Control (PC)	6AV2157-0BP01-6AB0	6AV2157-0BP01-6LB0
WinCC Unified Collaboration (PC)	6AV2157-0BR01-6AB0	6AV2157-0BR01-6LB0
WinCC Unified Report Execution	6AV2157-0BQ01-6AB0	6AV2157-0BQ01-6LB0

WinCC Unified SCADA Options (PC)	Package (DVD)	Online Software Delivery (OSD)
WinCC Unified Database Option	6AV2154-0BS01-6AA0	6AV2154-0BS01-6LA0

# SIMATIC WinCC Unified – Promotion Packages



Available until 31/12/2020

## WinCC Unified PC (1k) RT

- WinCC Unified PC (1k) RT
- Parameter Control (PC)
- Logging Tags (100)
- Report Execution

**6AV2155-2ES01-6AL0**

## WinCC Unified PC (10k) RT

- WinCC Unified PC (10k) RT
- Parameter Control (PC)
- Logging Tags (1000)
- Report Execution

**6AV2155-2FS01-6AL0**

## WinCC Unified PC (50k) RT

- WinCC Unified PC (50k) RT
- Parameter Control (PC)
- Logging Tags (1000)
- Report Execution
- Database Option
- Client Operate (1)

**6AV2155-1GS01-6AL0**

**Packages only available via Online Software Delivery (OSD)**

~ 30%  
discount



# SIMATIC WinCC Unified – Promotion Packages Plant Intelligence Options

**SIEMENS**  
*Ingenuity for life*

Available until 31/12/2020

## WinCC Unified Plant Intelligence Optionen

- Calendar Option (Basis)
- Performance Insight Option (Basis)
- Logging Tags (100)

**6AV2155-0XP01-6AL0**

**Packages only available via Online Software Delivery (OSD)**

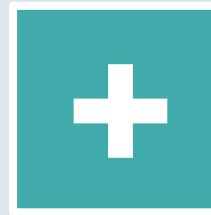
~ 30%  
discount

# SIMATIC WinCC Unified Ordering Information - IPC Packages



## SIMATIC IPC

Available for almost all SIMATIC IPCs that meet the technical requirements of SIMATIC WinCC Unified PC



## SIMATIC WinCC Unified PC

WinCC Unified PC Runtime License

- Price discount only with concurrent order of IPC and WinCC Unified software
- Please note the technical requirements of WinCC Unified when selecting the configuration
- Further information regarding the packages can be found in SIOS (as soon as available:)  
<https://support.industry.siemens.com/cs/de/en/view/99860269>

# Functional overview

WinCC  
Unified PC 16

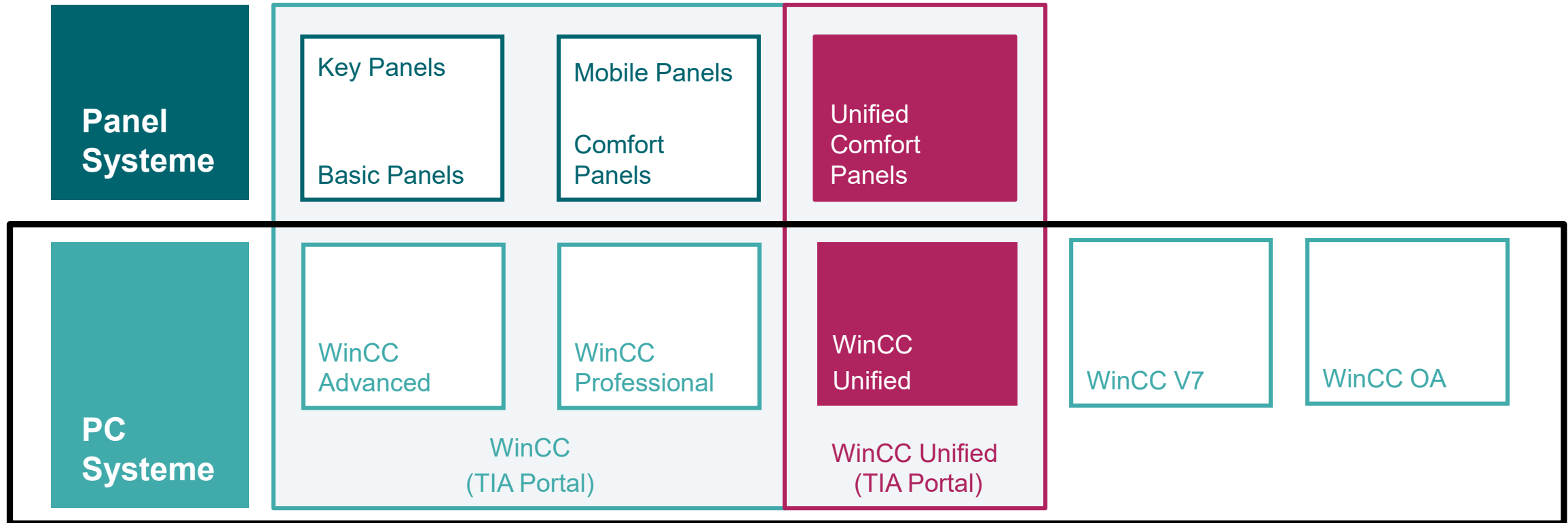
## V16

- Native Web Client
- SVG graphics (static and dynamic)
- Controls with significantly increased functionality
- File-based Archiving or Database logging
- Picture window technology
- Advanced Scripting
- Dynamization of objects
- Open Pipe and ODK (Open Development Kit)
- Custom Web Controls
- Technological Hierarchy
- Collaboration (1st step - screens)
- Calendar Option
- Performance Insight Option
- Line Coordination System (LCS)

## > V16

- 3rd Party Communication
- Profibus Communication
- Native Client
- Audit/GMP
- RFID Autentication
- Two-hand operation & Multitouch
- Multi-monitor
- Central User Management
- System diagnosis control
- Redundancy
- OPC UA HA/AC (Client)
- Monitoring Client (License)
- Central database archiving
- Central reporting server
- Collaboration (2<sup>nd</sup> step – tags, archives)
- Sequence Execution System (SES)
- And more ...

# HMI & SCADA Portfolio – Including WinCC Unified System



No replacement of current portfolio for the moment. WinCC Unified V16 running in parallel for now.  
In the long term, the HMI & SCADA portfolio in TIA Portal will consistently be based on WinCC Unified.



Jos Klein Woud  
Produkt- och marknadsansvarig  
SCADA

Siemens AB

Malmö

Tel: 040-59 25 13

E-mail: [jos.kleinwoud@siemens.com](mailto:jos.kleinwoud@siemens.com)

[siemens.se/wincc-unified](https://www.siemens.se/wincc-unified)