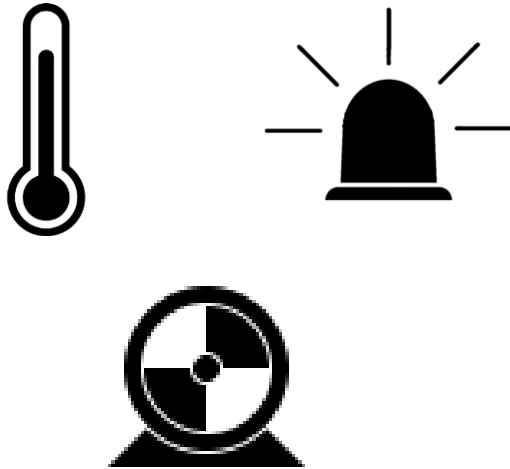


Library of Basic Processes (LBP)

Description

What is Library of Basic Processes (LBP) ?



Reusable
elements

From project to project,
there are common elements
that require to be visualized.
They can be motors, analog
values, valves ...

standardized



Library of Basic
Processes

The LBP provides support
in visualizing various
functions of those common
elements.

re-use



Projects

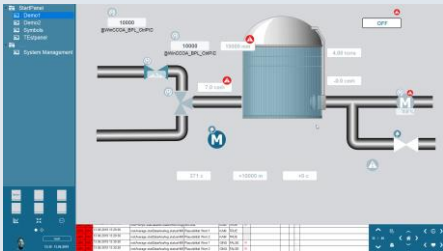
The library then can be
used in next projects

LBP – Where it supports for ?



LBP is available

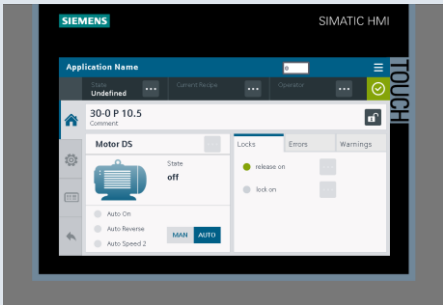
for WinCC OA



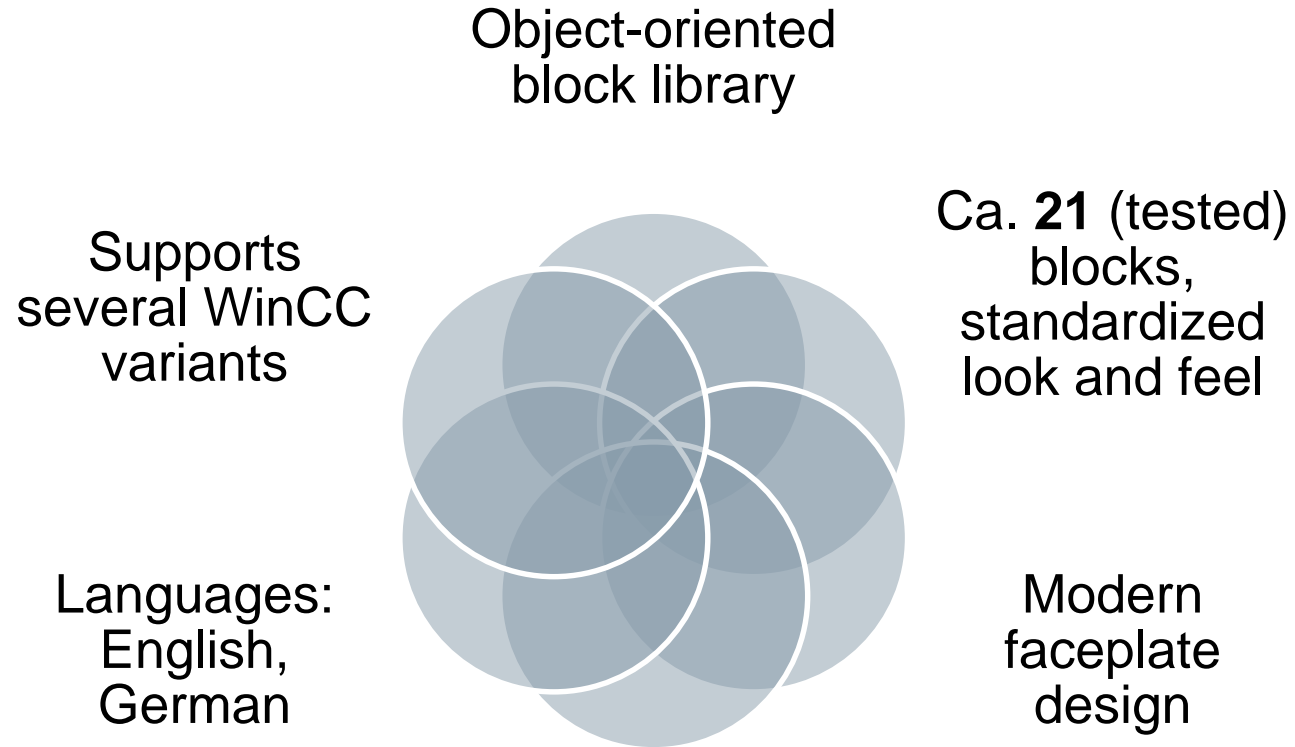
for WinCC V7 and WinCC Professional



for TIA Portal Comfort / Advanced

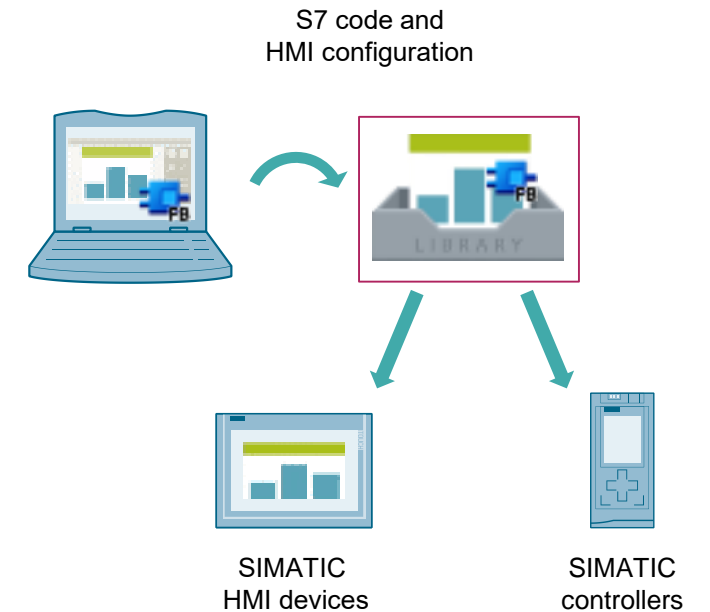


LBP – Library of Basic Processes Properties



[free download LBP](#)

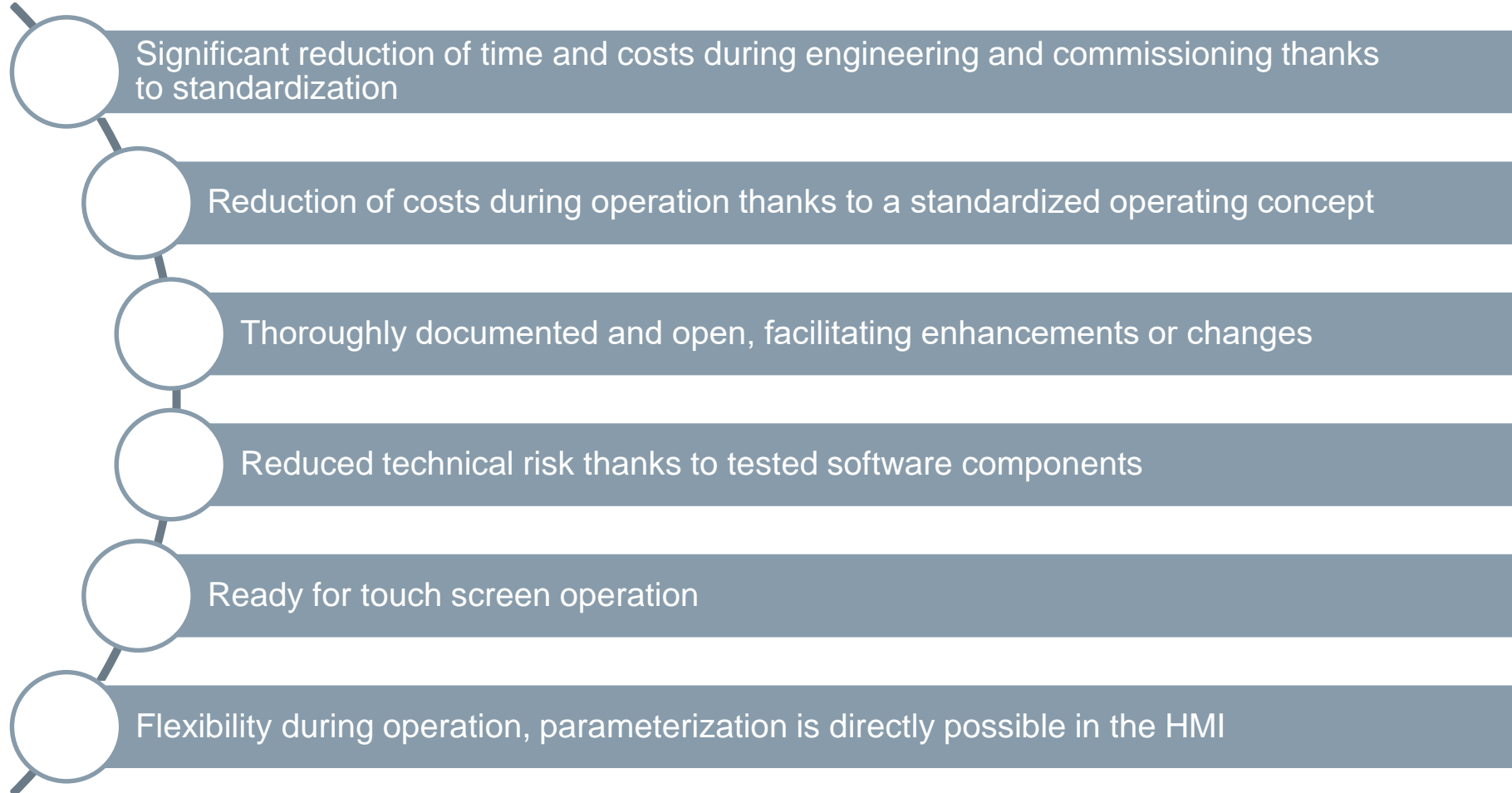
SIEMENS
Ingenuity for life



Advantages

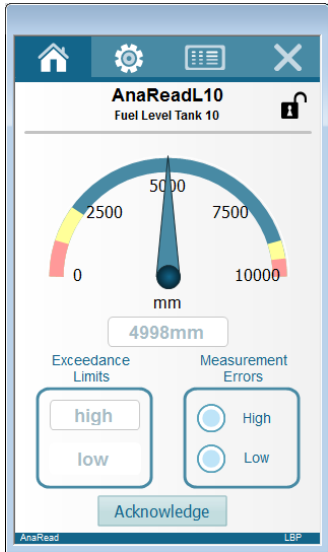
LBP – Library of Basic Processes

Customer benefits



Functions

General functionality of functions



Home screen

- Overview of main values and alarms

Settings pages

- Overwriting values
- Logging of actions

Filtered Alarms

- Filtered by function block
- Filtered by Alarm type

Pop Up Management on SCADA Systems

- With changeable behavior

Faceplates

General operation and navigation concept

SCADA View

Modern design with self explaining icons

Configuration / Parameter settings

Big and readable elements

Selected alarms and messages related to the element

Integrated station lock

Selection of values from PLC (default) or HMI

Logging of last 15 events generated by function block

Navigation through different pages

Date	Time	Status	Message text	Class	Cont
05/02/19	02:31:55 PM	Limit Max Reached		LBPL_Warnini	0/0
05/02/19	02:31:58 PM	Limit Max Reached		LBPL_Alarm	0/0

Date	Time	Event
2/6/2019	12:05:11 PM	< CHECK >
2/6/2019	10:48:39 AM	ALARM LOW
2/6/2019	10:48:39 AM	WARNING LOW
2/6/2019	9:31:17 AM	ALARM LOW
2/6/2019	9:31:17 AM	WARNING LOW

Faceplates

General operation and navigation concept

HMI Comfort Panel View

Main screen

Settings

Alarms and messages

Navigation tabs

User registration

Open navigator

Diagnostic overview

Values can be chosen between PLC or HMI

Radio box defines alternative is set

Return (close message window)

Loop in Alarm

Alarm acknowledgement

Application Name

State Undefined ...

Current Recipe ...

Operator User Name ...

30-1 FIRQ41
Inflow Tank 10

HMI Settings

Comment
Inflow Tank 10

Unit
cm

Previous Values

Counter
+0
cm

Remain
+0.000
cm

Last Correction
6/13/2019 2:17:52 PM

Initialize **Reset**

30-3 M31
Pump OutFlow Tank

Comment
Pump OutFlow Tank

Tolerance

PLC 1.5 %

HMI 2.0 %

5000 ms

0 ms

30-3 LIC24
Level Control Tank 10

Setpoint Control

Manual OFF MAN AUTO

Setpoint
+4976.269 mm

Feedback
+0.0% mm

Errors

30-3 M31
Pump OutFlow Tank 10

No.	Time	Date	Status	Text	Acknowledge group
126	3:49:17 PM	6/13/2019	+	30-3 M31 - Trip	0
118	4:18:24 PM	6/13/2019	+	30-3 M31 - Off	0

Unrestricted © Siemens 2020

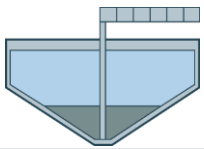
LBP – Library of Basic Processes

Polygon with 8 points (conversion tool)

LBP_Polygon

0,000tons

- The easy way to realize complex conversions. Based on 8 fixed setpoints for conversion rate, it is possible to get results for any conversion equation.



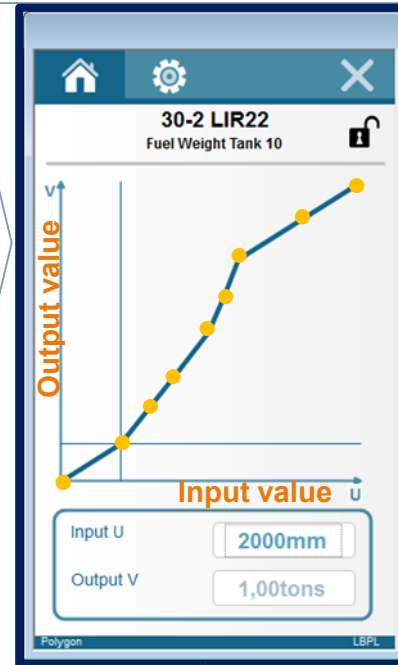
Application example:

Level is known, what is the volume of the content?

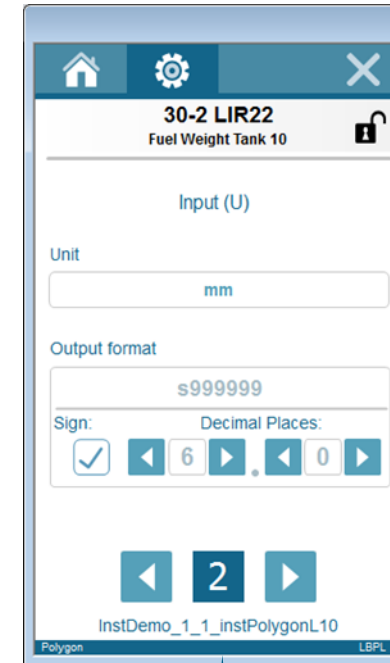
The answer: LBP_Polygon.

Advantages

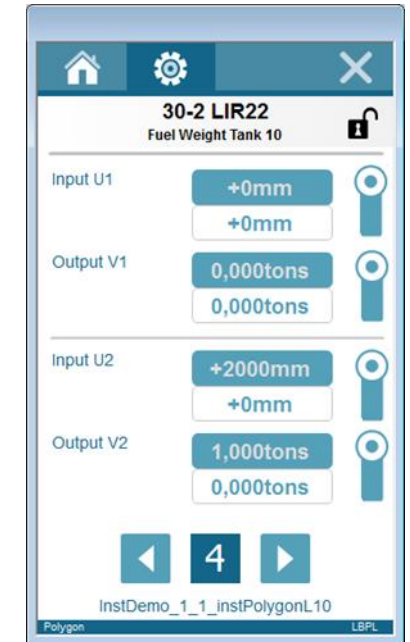
- The easy way to realize complex unit conversions
- Easy to read the current input and output values
- Easy to configure the conversion points



Definition of 8 different conversion points
Second axis shows the actual point



Parameters for the display of results
(For operator)



Parameters for each conversion point

**I want to start with
LBP right now !**

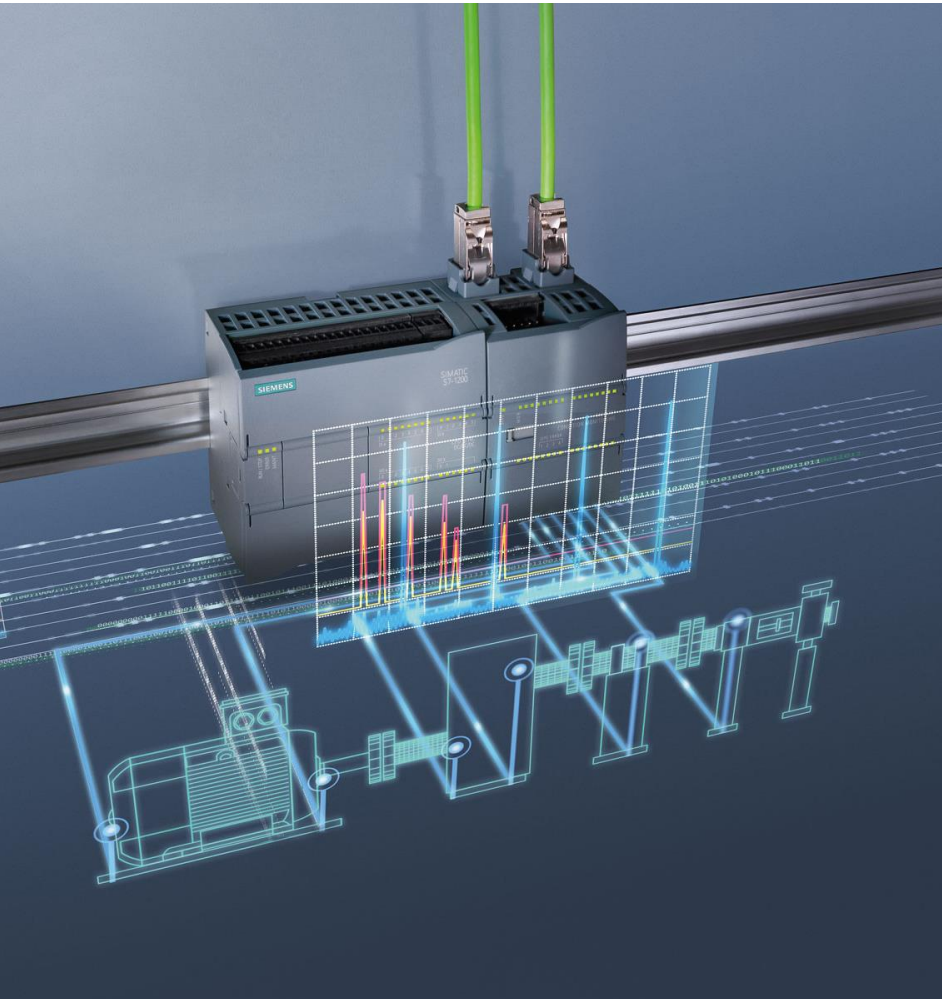
SIOS (Entry ID: 109749508)



- Find the Library and documentation for download
- Find demo applications
- Technical information

<https://support.industry.siemens.com/cs/ww/en/view/109749508>

Thank you for your attention!



For further information and support, please contact:

Mr. Le Tien Vinh

Sales specialist

Digital Industries – Factory Automation

Siemens Vietnam

Mobile: (+84) 0902 586 121

Email: le-tien.vinh@siemens.com

www.siemens.com.vn

www.facebook.com/Siemens.Vietnam

Subject to changes and errors. The information given in this document only contains general descriptions and/or performance features which may not always specifically reflect those described, or which may undergo modification in the course of further development of the products. The requested performance features are binding only when they are expressly agreed upon in the concluded contract.

All product designations, product names, etc. may contain trademarks or other rights of Siemens AG, its affiliated companies or third parties. Their unauthorized use may infringe the rights of the respective owner.