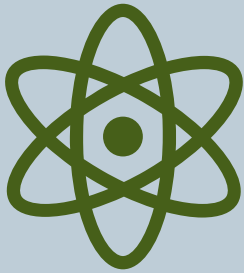
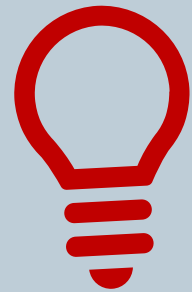


SIEMENS



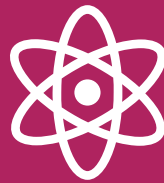
Christmas Quiz

STEM and Sustainability

[siemens.co.uk/education](https://www.siemens.co.uk/education)



Did you know?



Did you know that a reindeer and a caribou are the same animal? People use the term 'reindeer' to refer to the domesticated work animals, like those pulling Santa's sleigh, and 'caribou' is used to refer to the wild-living animals.

Merry Chris-STEM-mas! Test your STEM and Sustainability skills in this fun and festive quiz!

Question 1

'Rangifer tarandus' is the scientific name for which animal?

Question 2

On the fifth day of Christmas, my true love gave to me, 5 gold rings! But what is the periodic symbol for gold?

Question 3

An artificial Christmas tree has a lower carbon footprint than a real Christmas tree. TRUE or FALSE

Question 4

Santa is planning to travel from the North Pole to London, a distance of 4240 miles. He is setting off from the North Pole at 1pm and he needs to arrive in London at 5pm. What speed, in miles per hour, does Santa need to fly to get to London on time?

Question 5

If Santa Claus had to deliver a present from the North Pole to the moon, how many miles would he have to travel?

Question 6

In the song '12 Days of Christmas', how many presents are mentioned in total?

Question 7

To the nearest million, how many Brussels sprouts are thrown away every Christmas?

Question 8

If you are on the naughty list, you might get a lump of coal for Christmas. But what the primary element in coal?

Question 9

In the Christmas song, 'Deck the Halls' how many 'lahs' are there after the line, 'Deck the halls with boughs of holly...'

Question 10

In 2018, the UK wasted enough wrapping paper to wrap up the whole of which island:

- Guernsey
 - The Isle of Man
 - Great Britain
-

Question 11

If you wanted to find the North Pole, you could use a compass to point north. But what force makes a compass point north?

Question 12

In what year was the first Christmas cracker invented?

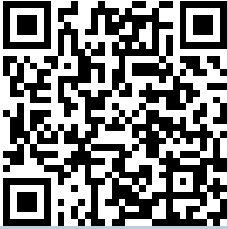
Did you know?



You can test if your wrapping paper is recyclable by scrunching it into a tight ball. If it says tightly scrunched when you let go then it will be recyclable!

How did you score?

Explore STEM at home
with these awesome
DIY Science videos.
Scan the QR code to watch!



[siemens.co.uk/education](https://www.siemens.co.uk/education)



Score: /15