

# Meter Centers

## Circuit Breaker Service Entrance Modules

### FEATURES

- UL Listed for 60/75°C conductors.  
See equipment markings for applications.

### Series Tested Systems

Specify Siemens Modular Metering equipment in conjunction with Siemens Load Centers.

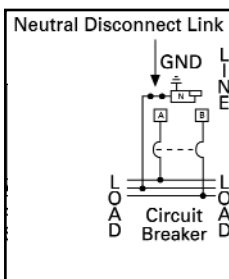
Maximum Interrupting Rating	Ampere Rating	Indoor Enclosure Type 1 Indoor Catalog Number	Outdoor Enclosure Type 3R Outdoor Catalog Number	Circuit Breaker Type
<b>1 PHASE, 3 WIRE SN, INCOMING</b>		<b>120/240 VOLT AC</b>		
65,000	400	<b>MC4U</b>	<b>WMC4</b>	JD6
65,000	600	<b>MC6U</b>	<b>WMC6</b>	JD6
65,000	800	<b>MC8U</b>	<b>WMC8</b>	MD6
65,000	1000	<b>MC10U</b>	<b>WMC10</b>	ND6
65,000	1200	<b>MC12U</b>	<b>WMC12</b>	ND6
65,000	1600	<b>MC16U</b>	<b>WMC16</b>	PD6
65,000	2000	<b>MC20U</b>		RD6
<b>3 PHASE, 4 WIRE SN, INCOMING</b>		<b>120/240 or 120/208 VOLT AC</b>		
65,000	400	<b>MC44U</b>	<b>WMC44</b>	JD6
65,000	600	<b>MC64U</b>	<b>WMC64</b>	JD6
65,000	800	<b>MC84U</b>	<b>WMC84</b>	MD6
65,000	1000	<b>MC104U</b>	<b>WMC104</b>	ND6
65,000	1200	<b>MC124U</b>	<b>WMC124</b>	ND6
65,000	1600	<b>MC164U</b>	<b>WMC164</b>	PD6



### Service Entrance Modules

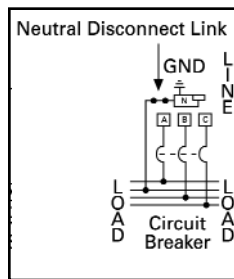
#### OUTDOOR

1 PHASE, 3 WIRE, INCOMING



#### OUTDOOR

3 PHASE, 4 WIRE, INCOMING

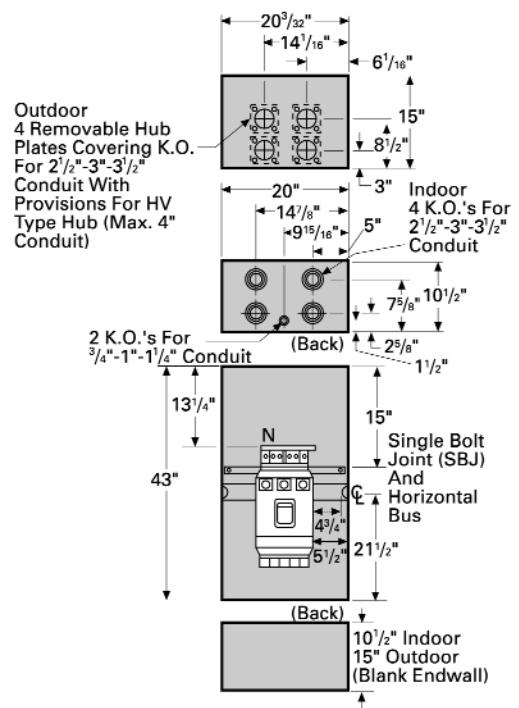
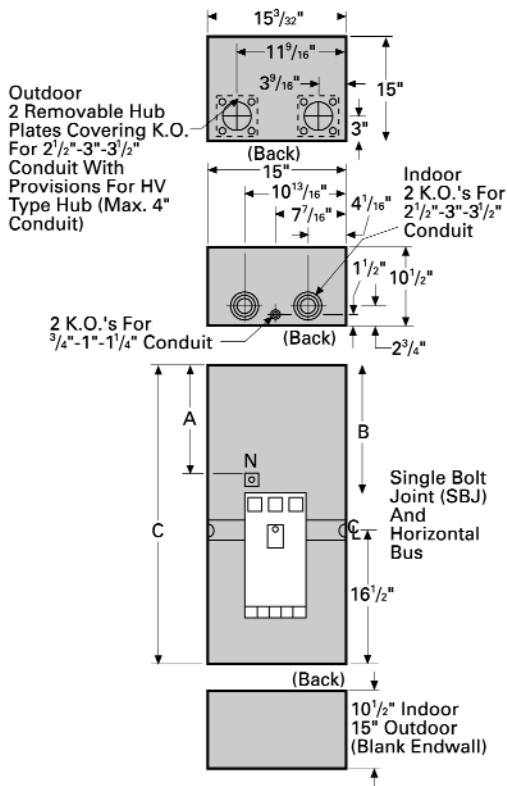


# fastfax

# SIEMENS

# Circuit Breaker Service Entrance Modules

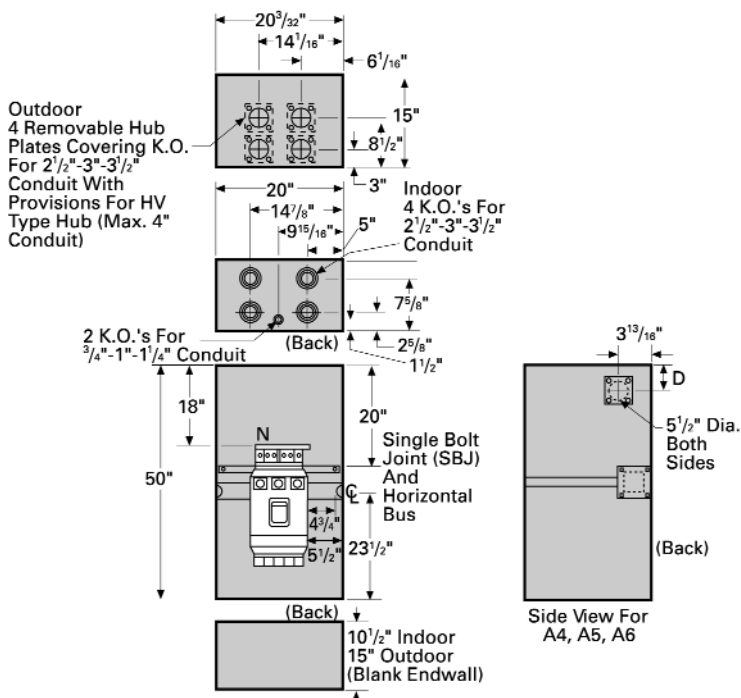
## Dimensions (in inches)



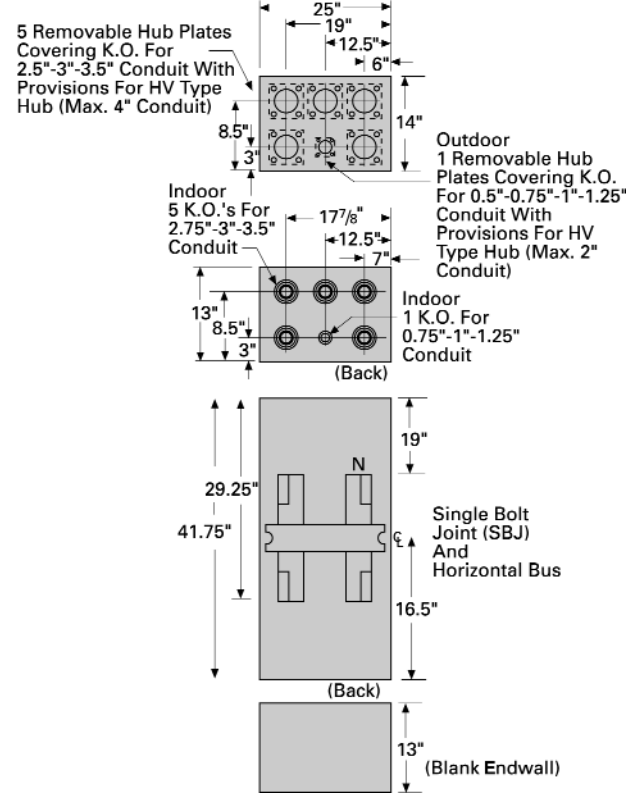
Catalog Number		Dimensions (inches)	
Indoor	Outdoor	(D)	
MC8U	WMC8U	5-7/16	
MC84U	WMC84U	5-7/16	

Catalog Number		Dimensions (inches)			
Indoor	Outdoor	(A)	(B)	(C)	(D)
MC4U	WMC4U	9-1/4	15-9/16	33	4-9/16
MC6U	WMC6U	14	17-5/8	37	4-9/16
MC44U	WMC44U	9-1/4	15-9/16	33	4-9/16
MC64U	WMC64U	14	17-5/8	37	4-9/16

# Circuit Breaker Service Entrance Modules Dimensions (in inches)



Catalog Number		Dimensions (inches)
Indoor	Outdoor	(D)
MC10U	WMC10U	10-7/16
MC12U	WMC12U	10-7/16
MC104U	WMC104U	10-7/16
MC124U	WMC124U	10-7/16



Catalog Number	
Indoor	Outdoor
MC16U	WMC16U
MC164U	WMC164U
MC20U	