



## RAIL AUTOMATION

# Automatic Train Control (ATC) for Light Rail

Siemens Mobility introduces its latest Automatic Train Control (ATC) system for light rail vehicle applications.

### Provides several key functions:

- 2340 Hz AF Cab Signal Interface
- Ten (10) Individual Speed Codes
- Street Running
- Overspeed Protection
- Brake Assurance
- Ethernet PTU
- Datalogging

Bi-color LEDs on the ADU speed ring clearly show actual speed against required speed limits. A two-digit display also provides speed in numeric format.

Small package size is ideal for utilizing the limited equipment space experienced on board Light Rail Vehicles.



*Light Rail Operator's Cab Console. ADU is left of center screen.*

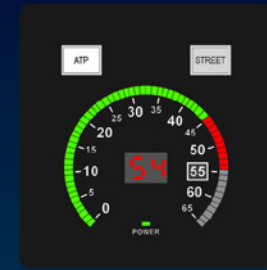
## Features

- Solid-State LED Indicators
- Auto Dimming Function
- Microprocessor Based
- Vital Design
- Dual Cab Operation
- Vital Decelerometer
- Ethernet Network Capability

**SIEMENS**

## Physical Data

Specification	Parameters
Size	ATC Unit, 13.3" H x 18.2" W x 13.0" D ADU, 6.2" H x 5.9" W x 5.8" D (with connector)
Battery	28 VDC (Nominal) Range 18 V to 36 VDC (Current 5 A (Nominal))
Output Signal	Service Brake: Dry Contacts (6 A @ 30 VDC) Emergency Brake: Dry Contact (4 A @ 40 VDC)



*Aspect Display Unit with Speedometer  
(Assembly No. NYK:P000620300-A01)*

## Environmental Data

Specification	Parameters
Operating Temperature	-40 °F to +158 °F (-40 °C to +70 °C)
Humidity ( <i>Maximum</i> )	20% to 100% non-condensing
Storage Temperature	-67 °F to +203 °F (-55 °C to +95 °C)
Shock & Vibration	IEC 61373

## Ordering

To Order Call	Specify
1 (800) 793-7233	Assembly Number



*Track Receivers  
(Assembly No. NYK:P000620402-D01)*



*ATC Unit  
(Assembly No. NYK:P000620100-A01)*

Siemens Mobility, Inc.  
One Penn Plaza  
11th Floor, Suite 1100, New York, NY 10119, United States

Contact for information:  
Rail Infrastructure Headquarters, Homestead, PA 15120  
1 (800) 793-7233, [siemensmobility.us@siemens.com](mailto:siemensmobility.us@siemens.com)

Printed in the USA | © 2021 Siemens Mobility, Inc. | [usa.siemens.com/mobility](http://usa.siemens.com/mobility)

Subject to changes and errors. Reference to any specific commercial products, processes, or services, or the use of any trade, firm, or corporation name is for the information and convenience of the public and does not constitute endorsement, recommendation, or favoring by their respective entities. The information given in this document only contains general descriptions and/or performance features. The requested performance features are binding only when they are expressly agreed upon in the concluded contract.