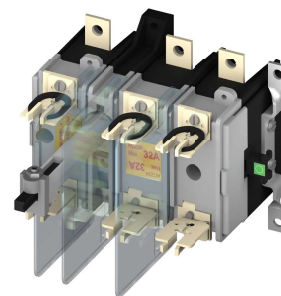
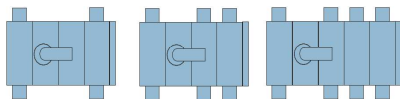


SENTRON SUPERSWITCH

Switch Disconnecter Fuse - Size 1



3KL81...-... (20A-100A)
3KA81...-... (63A-100A)



IEC 60947 -1
IEC 60947 -3



Operating Instructions



EN **⚠ DANGER**
Hazardous voltage will cause death or serious injury. Turn off and lock out all power supplying this device before working on this device. Replace all covers before power supplying this device is turned on.
NOTICE
Installation & Maintenance is to be carried out by qualified personnel.



Required tools



2.5 mm
5.0 mm



3.0 mm



10 mm

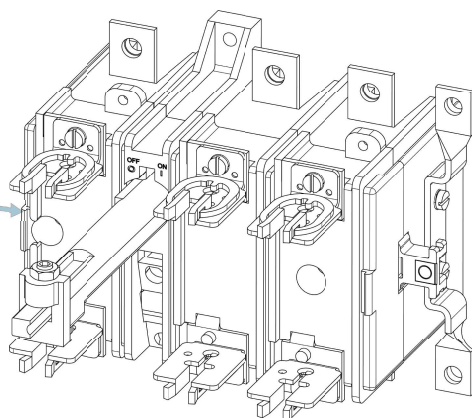
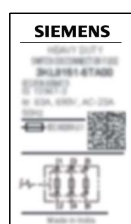


0.5 x 3 mm

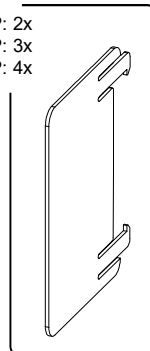
cal. ISO 6789



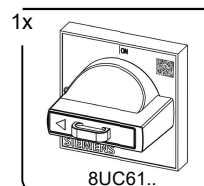
Contents



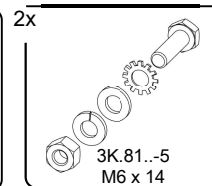
2P: 2x
3P: 3x
4P: 4x



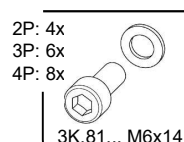
For 3KL8



1x



2x



2P: 4x
3P: 6x
4P: 8x



2P/3P: 2x
4P: 4x



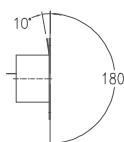
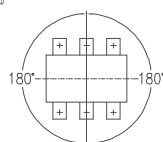
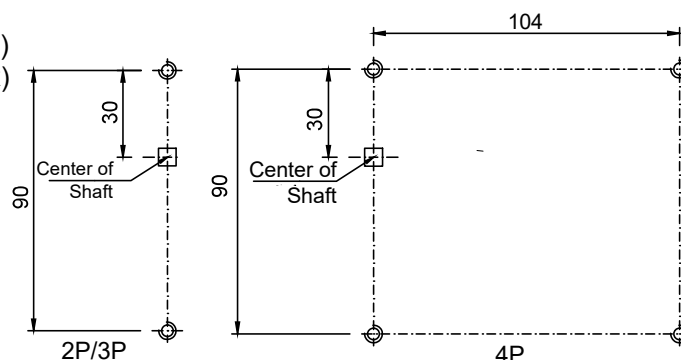
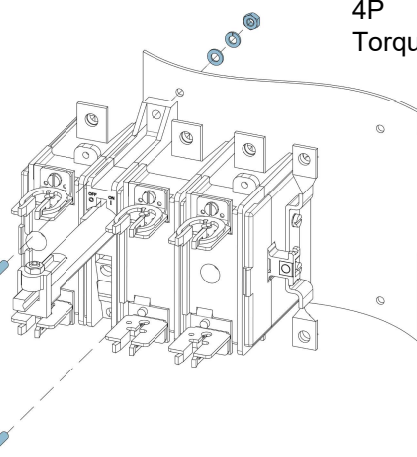
Assembly



Mounting Details:

2P/3P : M4 x 20 (2x)
4P : M4 x 20 (4x)
Torque 1 to 1.5 Nm

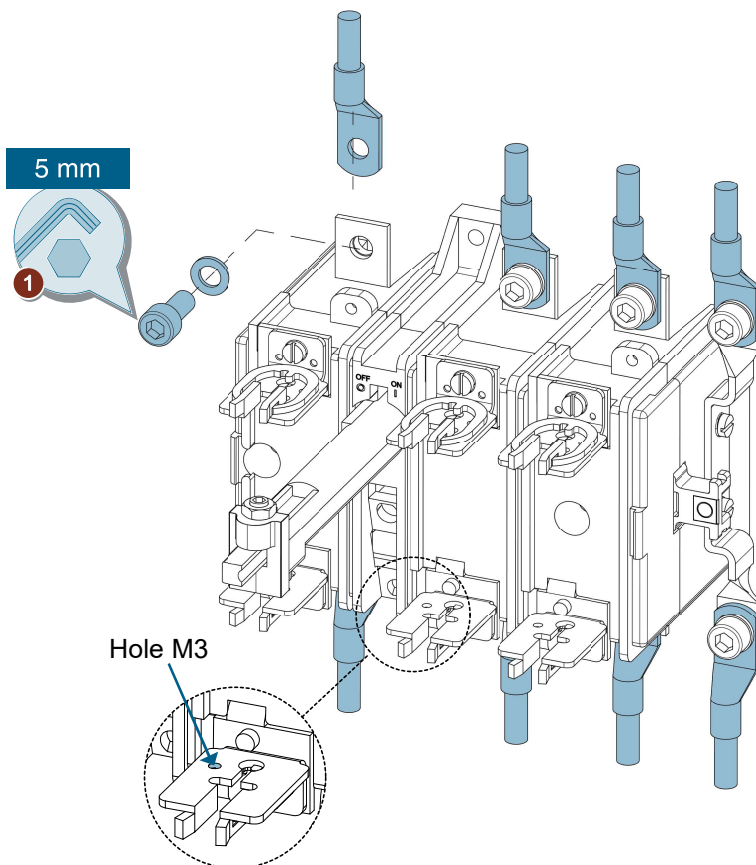
0.5 x 3 mm



Permissible mounting position



Connection



Provision for Fuse monitoring

Termination Details:

**3KL8111../3KL8121../3KA8151..
3KL8151../3KL8171../3KA8171..**

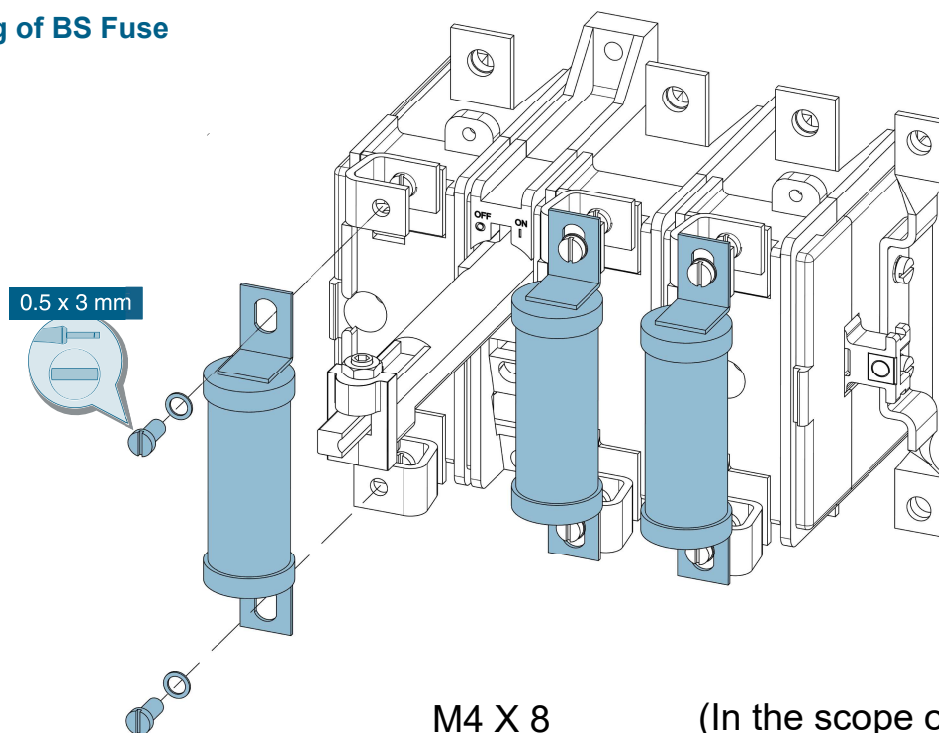
Max. Lug Size 35 mm² M6 x
14
Torque 6 Nm to 7.5 Nm



Assembly



Mounting of BS Fuse



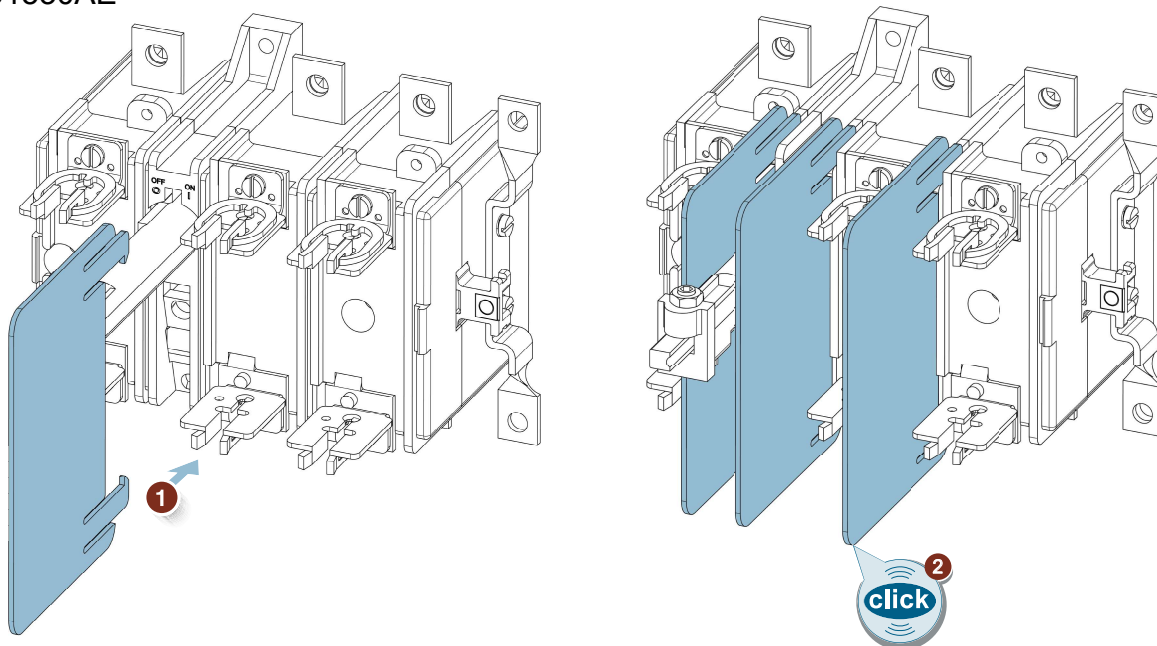
M4 X 8 (In the scope of supply)
Torque 2 Nm.



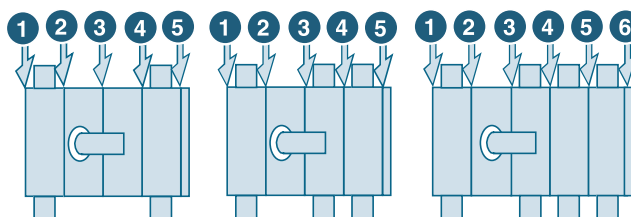
Assembly



Phase Barrier: 3KX81530AE



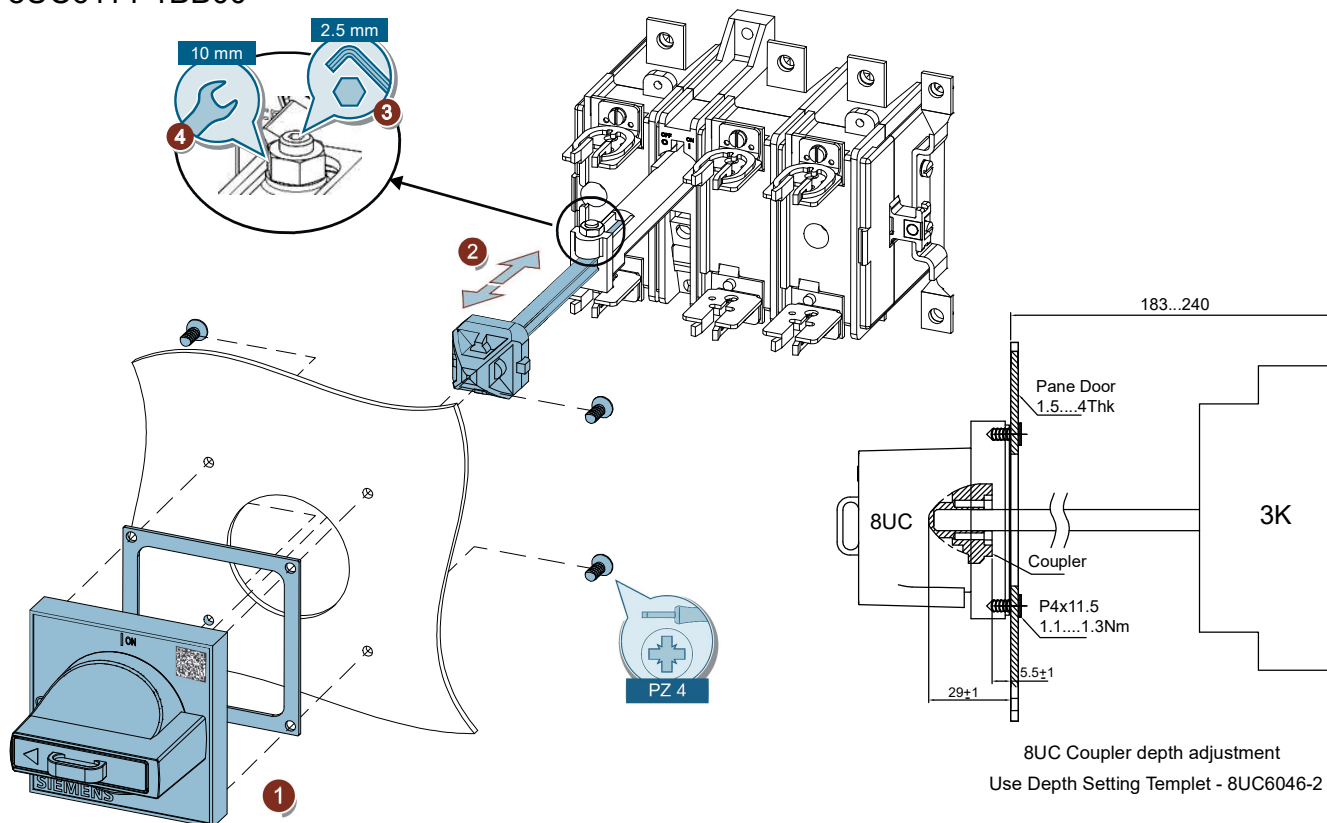
- 2P: Phase Barrier in positions 2 & 4 are essential
 3P: Phase Barrier in positions 2,3 & 4 are essential
 4P: Phase Barrier in positions 2,3,4 & 5 are essential

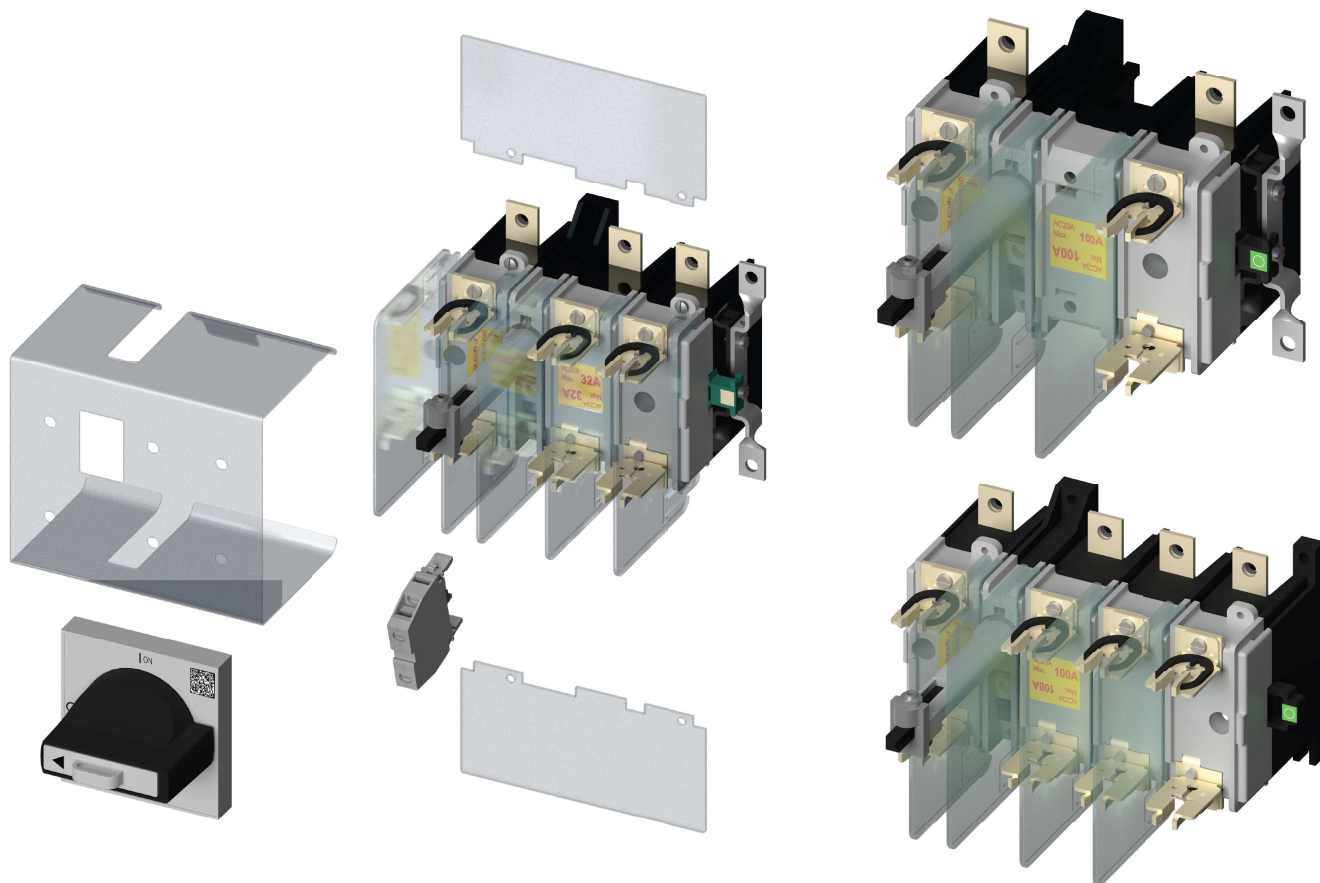


Assembly



Mounting Details for Front Drive 8UC6114-1BB00



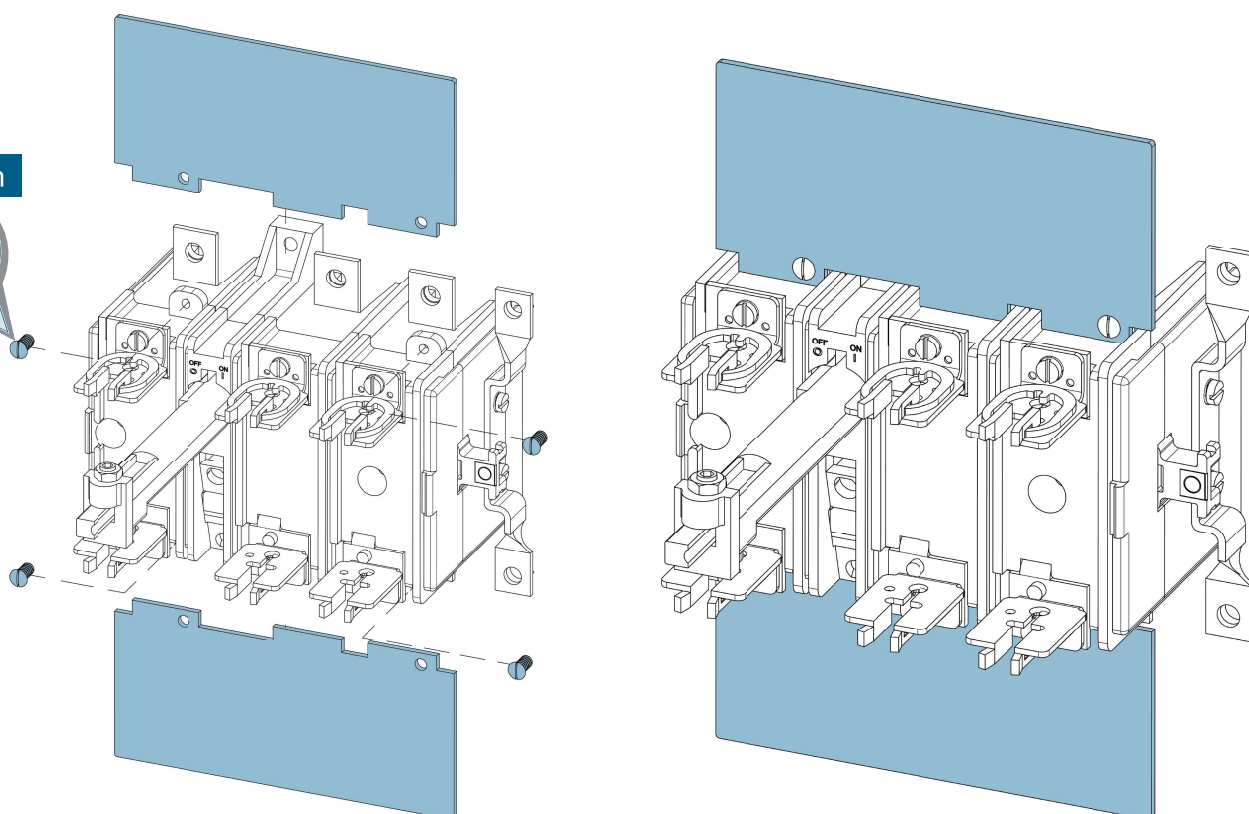


Terminal cover

2P/3P : 3KX81510AE

4P : 3KX81510AG

0.5 x 3 mm



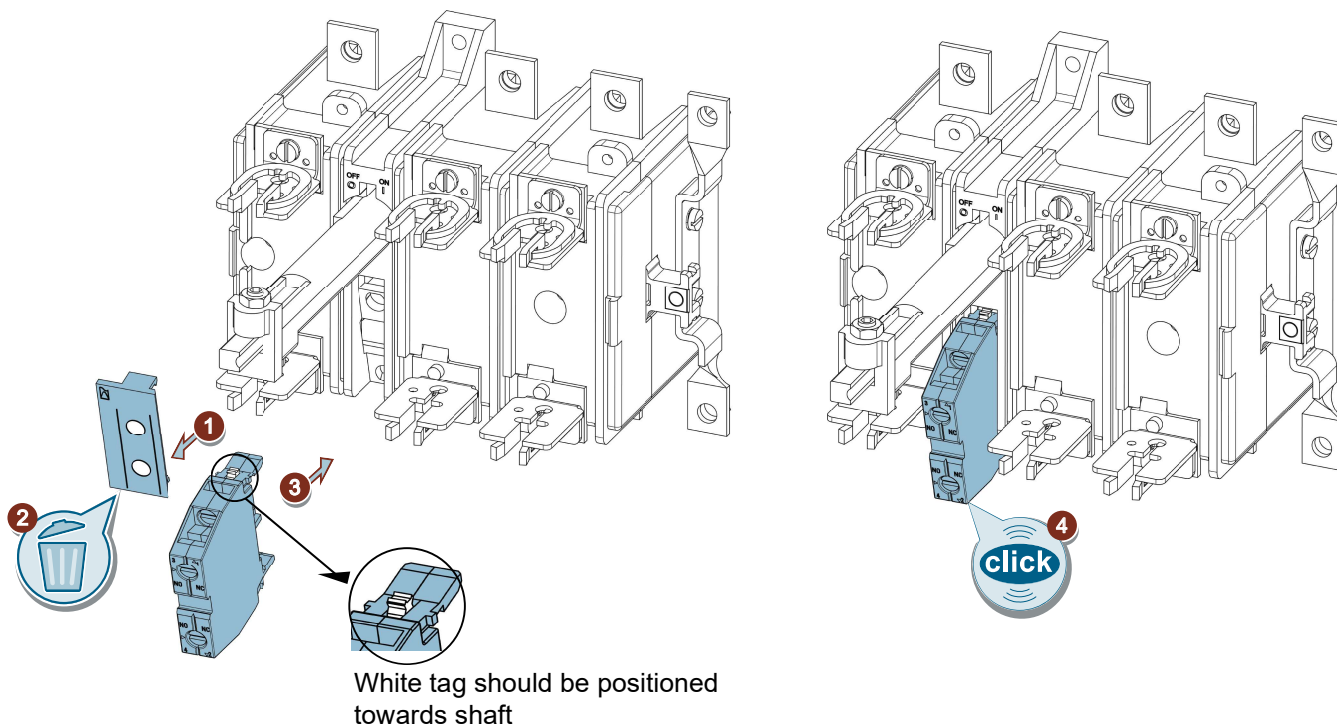


Assembly



Mounting Aux. Switch

3SB54000A



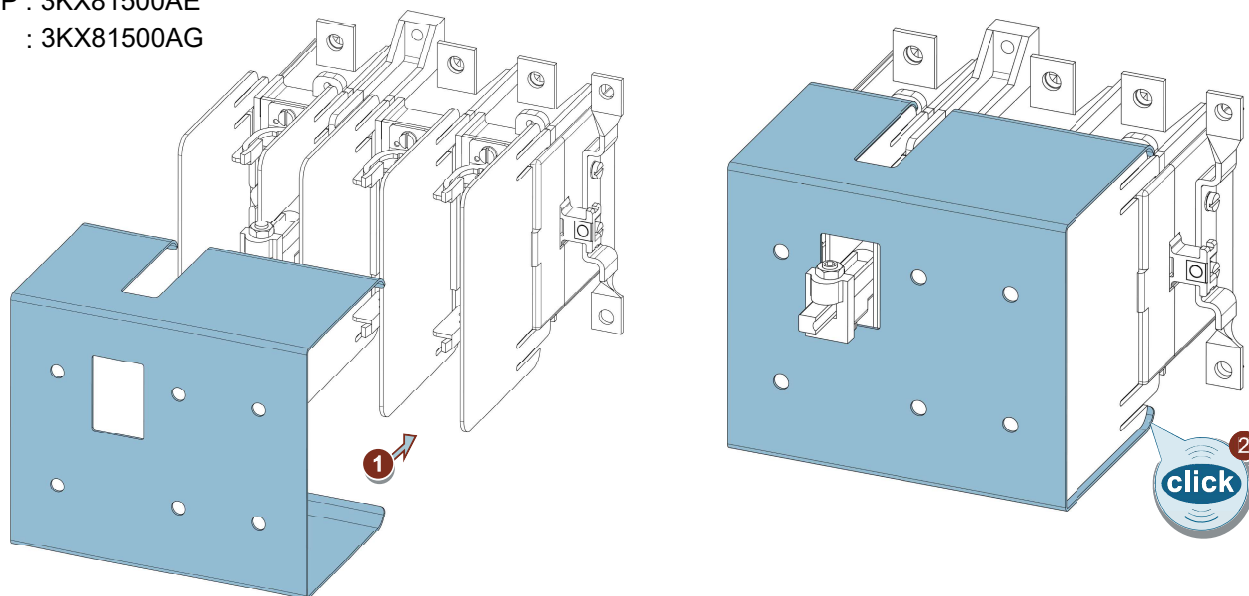
Assembly



Fuse Cover:

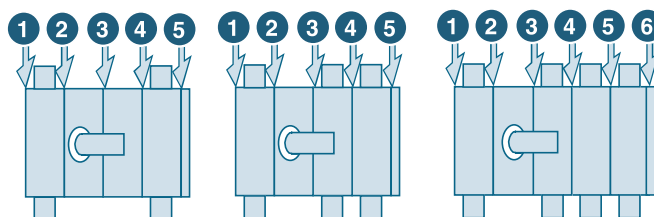
2P / 3P : 3KX81500AE

4P : 3KX81500AG



2P/3P : Additional Phase Barrier in position 1 & 5

4P : Additional Phase Barrier in position 1 & 6



EN

WARNING

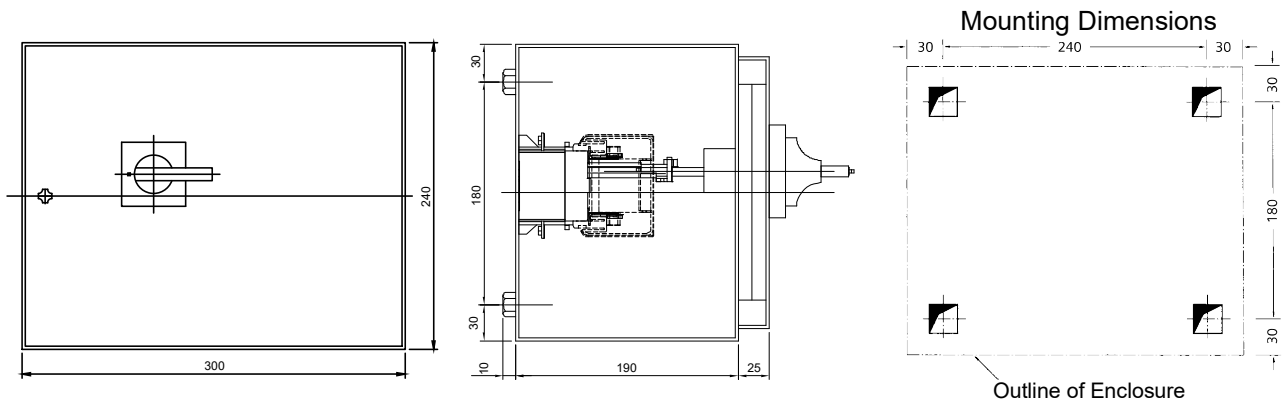
Hazardous Voltage. Will Cause death or Serious Injury.
Ensure Switch is in OFF position. While mounting and removal.



Information



Dimension Details for SDF in Enclosure

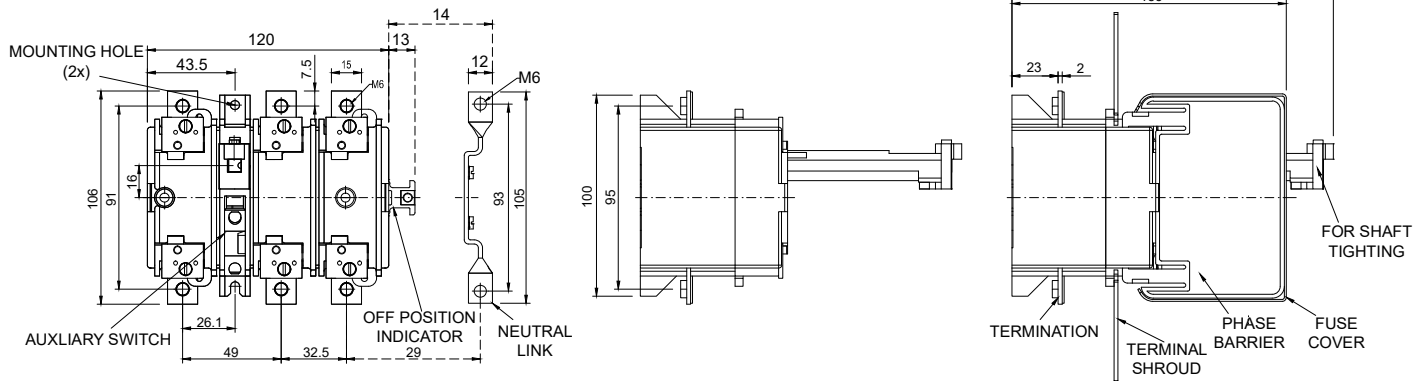


Information

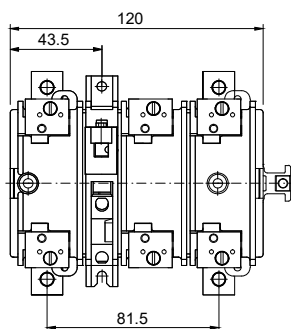


Overall Dimensional details

3KL8/3KA8 : 3P/3P+N

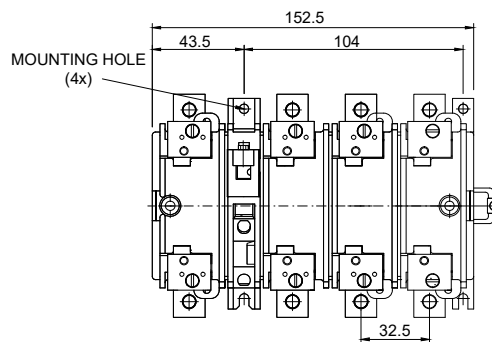


3KL8/3KA8 : 2P



For other dimensions refer 3P/3P+N

3KL8/3KA8 : 4P



For other dimensions refer 3P/3P+N

Disposal

Siemens Products are environment-friendly, which predominantly consist of recyclable materials.

For Disposal, we recommend Disassembling and separation into following materials.

METALS. Segregate into Ferrous & Non Ferrous types for recycling through authorised dealer.

Email: ics.india@siemens.com

PLASTICS: Segregate as per material type for recycling through an authorised dealer.

Because of the long lifetime of Siemens products the disposal guidelines maybe replaced by other national regulations when taking the product out of service.

The local customer care service is available at any time to answer disposal-related questions

Customer Care Toll-free no. - 1800 209 0987