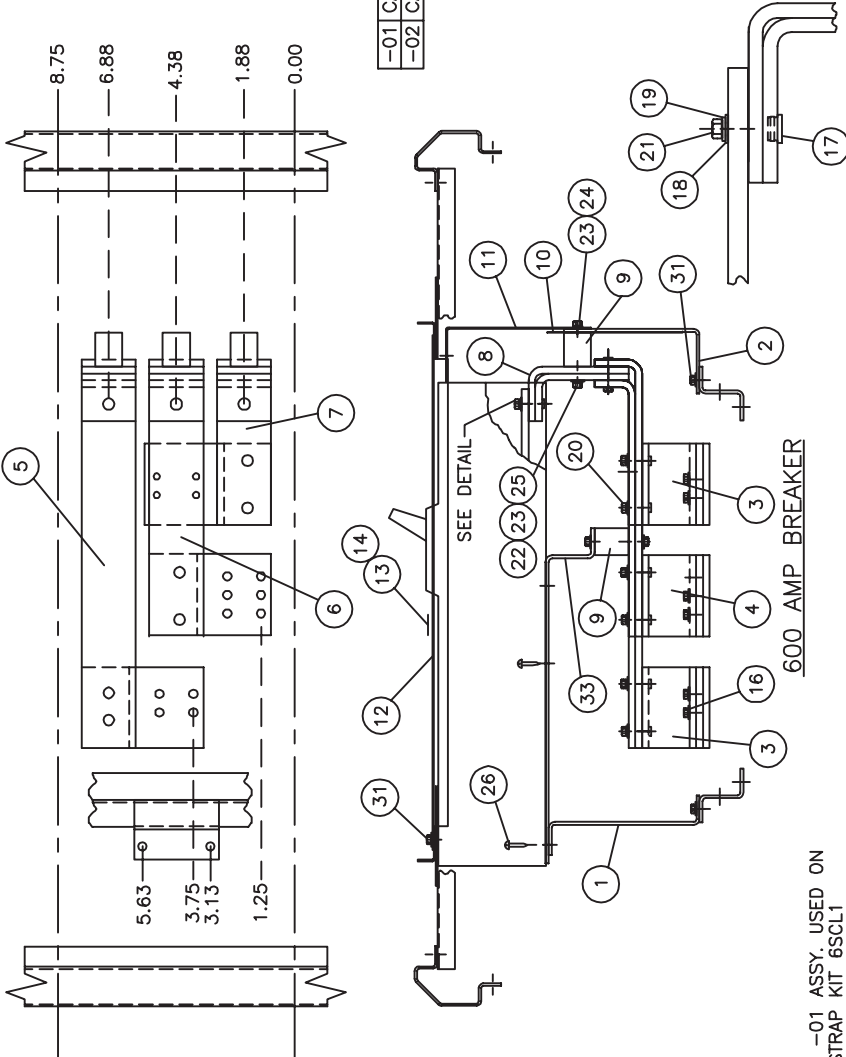


Third Angle Projection
 12-5772
 1
 Rev
 Sht

| -02 | -01 | ITEM | PC. NO. | DESCRIPTION |
|-----|-----|------|--------------|------------------------------|
| 1 | 1 | 1 | 16-6114-01 | MOUNTING BRACKET |
| 1 | 1 | 2 | 16-6120-02 | SUPPORT BRACKET |
| 2 | 2 | 3 | 17-6768-02 | ØAC JITNEY |
| 1 | 1 | 4 | 17-6769-02 | ØB JITNEY |
| 1 | 1 | 5 | 12-6776-06 | ØAC LONG CONNECTOR |
| 1 | 1 | 6 | 12-6776-05 | ØB LONG CONNECTOR |
| 1 | 1 | 7 | 12-6776-04 | ØAC SHORT CONNECTOR |
| 3 | 3 | 8 | 17-6770-02 | PAD CONNECTOR |
| 4 | 4 | 9 | 11-1800-02 | 1-1/4" INSULATOR |
| 1 | 1 | 10 | 11-7721-01 | BARRIER |
| 1 | 1 | 11 | 11-6415-02 | BARRIER |
| 1 | 1 | 12 | 12-6487-01 | COVER PLATE |
| 1 | 1 | 13 | 11-7505-01 | CIRCUIT I.D. CARD |
| 1 | 1 | 14 | 11-7506-01 | CARD HOLDER |
| 15 | | | | |
| 2 | 2 | 16 | 11-B-2022-05 | STRAP-BUS HARDWARE KIT |
| 12 | 12 | 17 | 11-1620-04 | 5/12-18 INSERT |
| 12 | 12 | 18 | 11-1615-06 | 5/16" FLAT WASHER |
| 12 | 12 | 19 | 11-1618-04 | 5/16" LOCK WASHER |
| 6 | 6 | 20 | 11-1566-05 | 5/16-18 X 1" HHMS |
| 6 | 6 | 21 | 11-1566-07 | 5/16-16 X 1-1/4" HHMS |
| 8 | 8 | 22 | 11-1615-04 | 1/4" FLAT WASHER |
| 8 | 8 | 23 | 11-1618-03 | 1/4" LOCK WASHER |
| 4 | 4 | 24 | 11-1546-02 | 1/4-20 X 1/2" HHMS |
| 4 | 4 | 25 | 11-1546-05 | 1/4-20 X 7/8" HHMS |
| 4 | 4 | 26 | 11-1542-14 | 1/4-20 X 2-3/4" SRHMS |
| - | - | 27 | 12-B-2105-04 | NEUTRAL LUG ASSEMBLY |
| 1 | - | 28 | 12-B-2105-06 | NEUTRAL LUG ASSEMBLY |
| - | - | 29 | 11-1580-02 | 3/8-16 X 1" RHSNB |
| - | - | 30 | 11-1622-01 | 3/8-16 BELLEVILLE WASHER NUT |
| 6 | 6 | 31 | 11-1553-02 | 1/4-20 X 3/8" SHHWSW |
| 1 | 1 | 32 | 12-5531-11 | FILLER PLATE ASSEMBLY |
| 1 | 1 | 33 | 16-6115-01 | AUXILIARY MOUNTING BRACKET |
| 1 | - | 34 | 31-1230-01 | INSTRUCTION SHEET |
| 1 | 1 | 35 | 15-A-1027-01 | CARTON LABEL |
| 1 | 1 | 36 | 48001057 | CARTON |
| - | - | 37 | 11-5570-02 | SERIES 5 CONVERSION KIT |
| - | - | 38 | 31-1195-01 | INSTRUCTION SHEET |
| | | 39 | | |
| | | 40 | | |

-01 CAT# 6SCL1
 -02 CAT# SSCLD



PC. -01 ASSY. USED ON STRAP KIT 6SCL1
 PC. -02 ASSY. USED ON STRAP KIT SSCLD

⚠ DANGER

Hazardous voltage. Will cause death or serious injury.

Keep out. Qualified personnel only. Disconnect and lock off all power before working on this equipment.

TORQUE VALUES:
 (16)-72 IN/LBS.
 (29)-20 FT/LBS.
 (20)(21)-12 FT/LBS.

| Date | C.N. | Rev |
|------------------|------|-----|
| 1A-0662-16-89 | 0 | 0 |
| 1A-0776-08-89 | 1 | 1 |
| 1A-2801-30-90 | 2 | 2 |
| 1A-2808-31-91 | 3 | 3 |
| 1A-9397-22-91 | 4 | 4 |
| 1B-3591-11-92 | 5 | 5 |
| 1B-9085-08-95 | 6 | 6 |
| 1C-831A-04-12-04 | 7 | 7 |
| 1C-831B-7-31-06 | 8 | 8 |

Unless otherwise specified dimensions are in inches and are as follows unless specified otherwise.
 .XX ±.030
 .XXX ±.015
 Angular ± 2'
 Do not scale drawing

| | | | |
|------|-----|------|---------|
| Dwn | MJR | Date | 8-28-91 |
| Chk | JRM | Date | 9-5-91 |
| Apvd | SH | Date | 9-13-91 |

Confidential - Property of
Siemens Industry, Inc.
 Building Technologies Division

SCLD FRAME MOUNT
SERIES 6 - BRANCH

| | | | |
|---------|---------|-------|--------|
| Dwg No. | 12-5772 | Rev. | 8 |
| Scale | NONE | Sheet | 1 of 1 |

FOR USE WITH SCLD6 FRAME BREAKERS MOUNTED IN SPP/FPP/S5/F2/P5 PANELBOARDS (DEEP BOX).