

The Siemens logo is displayed in a white box at the top left of the page. The background of the entire top section is a photograph of a high-voltage electrical substation with silhouettes of power lines and equipment against a blue sky.

[siemens.com/energy/disconnector](https://www.siemens.com/energy/disconnector)

Motor Drive

3DV8

for High Voltage Disconnectors

Since the 1930s, Siemens has exported disconnectors and related components throughout the world. Based on the “genetic code” of the proven Siemens disconnectors, the portfolio has now been enhanced and harmonized to respond even better to varied customer needs and to make it easier for you to select the right product.



Motor drive 3DV8

Application and design of the motor drive

Like the Siemens disconnectors, the 3DV8 motor drive is delivered pre-adjusted and is therefore easy to install. You will benefit from reduced set-up time and cost. The 3DV8 is compatible with all Siemens disconnectors. Thanks to its modular design, it meets a broad range of technical specifications. Besides the 3DV8 Siemens offers further types of motor and manual drives.

Customer-specific solutions

Our 3DV8 motor drive is even more customizable than its predecessor. All components have a modular design and are therefore highly adaptable to your specific requirements. Coloring of the galvanized housing can also be customized to meet your needs. The 3DV8 can also be used as a replacement drive as well.

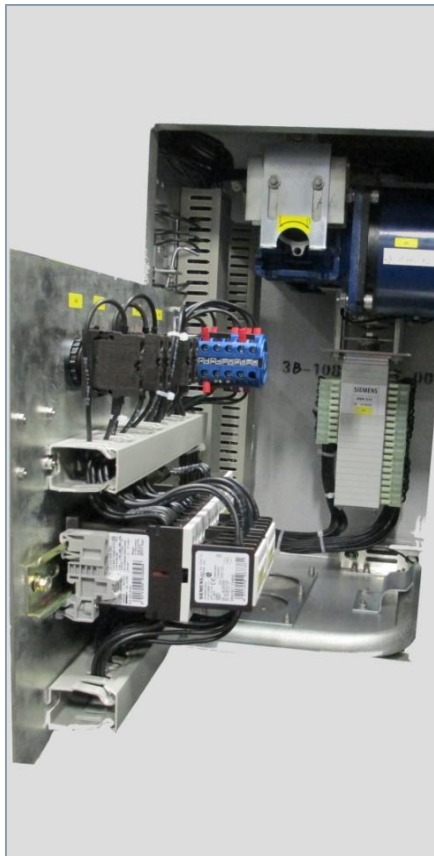
Proven quality that serves you a lifetime

All components of our motor drive are equipped with protection against contact and conform to protection class IP2X. The encapsulated worm drive and constant lubrication provide maximum staff safety and make maintenance virtually unnecessary. A sophisticated anti-condensation system that ensures continuous air circulation offers an extremely long service life. The galvanized housing is delivered with our proven corrosion protection and conforms to protection class IP55. Of course, our 3DV8 motor drives fulfill all requirements of different international and national standards like IEC, GOST R and GB, and are proven in extensive type tests.

Long-term partnership

Our decades of experience in the high voltage sector ensure state-of-the-art technology and highly reliable products that are appreciated by our customers worldwide. Knowing your business, we are a competent partner to support you, not only with products, but also with a wide range of services around your power plant.

Disconnectors
designed for your needs.



Design		Motor Drive			
Rated motor voltage*	[V] DC	60	110 / 125	220 / 230	250
	[V] AC	AC 127 / 230V; 50 / 60 Hz 3AC 127 / 220 / 230 / 380 / 415V; 50 / 60 Hz			
Rated control voltage*	[V] DC	60	110-125	220-230	250
	[V] AC	AC 127 / 230 V; 50 / 60 Hz			
Rated consumer voltage*	[V] DC	110-125	220-230	250	
	[V] AC	AC 127 / 230V; 50 / 60 Hz			
Rated nominal torque	[Nm]	600 and 800			
Rated starting torque	[Nm]	870 to 2200			
Operational time	[s]	< 15			
Temperature range	[°C]	-55 / +55			
Auxiliary contacts**		10 normal open / 10 normal close 4 early made / 4 late break / 1 wipping			
Auxiliary switching capability		Class 2 according to IEC 62271-102			
Protection class		IP55			
Maintenance period		Free			

* Other values are available upon request.

** Other configurations are available upon request.

Technical structure

The motor drive consists of three components: the galvanized housing, the gear unit with motor, and the electrical equipment with auxiliary switch. The applied auxiliary switch is considered as the most reliable one on the market. It is form-fit to the gear unit and allows for safe operation of the substation.

The opening is secured by a swivel-mounted shutter. Opening the shutter automatically interrupts the motor and control circuit, protecting the site personnel against inadvertent operation of the high voltage switchgear by remote control. The operating mechanism can also be operated manually. For this purpose, a hand crank is easily accessible from the side and can be operated with little effort (< 50 rotations).

Main features

- Easy commissioning and assembly due to pre-adjusted delivery
- Encapsulated worm drive provides for maintenance-free operation and safety for staff
- Proven auxiliary switch for highest reliability
- Standard RAL 9006, also available in other colors
- Low noise level
- Designed according to EN 62771-100
- Exceeding the IEC and meeting GOST R and GB



Siemens AG
Energy Management
Freyeslebenstrasse 1
91058 Erlangen
Germany

Customer Support Center
Phone +49 180 524 7000

© 11.2014, Siemens AG