

SIEMENS



Stand-alone fire detection for industrial applications

Discover Siemens' cutting-edge fire detection solutions, designed to enhance safety and optimize efficiency in harsh environments. The powerful systems guarantee seamless and adaptable operation while maximizing operational cost efficiency. With safety integrity level 2 (SIL2) compliance and unmatched reliability, the detectors prioritize the highest level of safety for both people and machines.

[siemens.com/fs-industry](https://www.siemens.com/fs-industry)

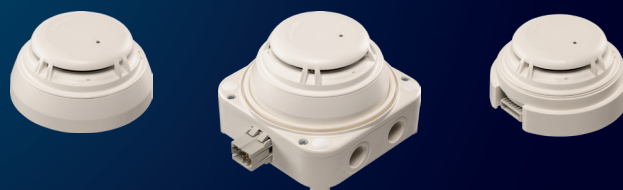
Spot detector

High-end, multi-criteria spot detector for reliable stand-alone applications

The high-end, multi-criteria spot detectors have been specially developed for stand-alone applications where availability and redundancy are paramount. With advanced signal analysis (ASA technology), you can rely on fast and highly accurate detection. The detectors excel even in demanding environments, offering unique detection accuracy and protection against false alarms. Additionally, flexibility is provided with up to three selectable parameter sets, allowing for customization and optimization based on the customers' requirements.

Flexible spot detectors with plug-and-play and base attachment

Siemens' spot detectors are available with either a 24 VDC or 110 VDC power supply, providing you with options to suit your specific needs. The stand-alone detectors are available with three different bases, making it the ideal option for various use-cases. The plug & play solution ensures easy and quick mounting, with a dedicated plug that eliminates installation errors. For areas with rough environmental requirements, an optional base attachment is available to provide added protection. With these features, all spot detectors offer convenience, adaptability, and reliability for your fire detection needs.



Key Facts

- ✓ Meets safety integrity level 2 (SIL2)
- ✓ Safety characteristic: MTTFd > 1000 years
- ✓ Protection class (IEC 60529) IP44 with detector base WET
- ✓ EMC-, climate-, over and under voltage, as well as shock and vibration tested according to EN50155
- ✓ Multi-criteria sensor according to EN-54
- ✓ Requirements for fire behavior of materials and components EN45545 – V0 Material

Aspirating smoke detector

Superior fire detection with the aspirating smoke detector

Siemens' aspirating smoke detector is a high-end solution for superior fire detection. With its exceptional sensitivity and reliability, this detector efficiently differentiates between smoke and deceptive phenomena, ensuring accurate and timely detection. Configuration is quick and easy, minimizing start-up sequence and streamlining the process. To meet project-specific requirements, the detector offers a range of selectable parameter settings, allowing for customization and optimization. Its unique dust-resistant detection chamber ensures uninterrupted and reliable performance even in challenging environments.

Key Facts

- ✓ Meets safety integrity level 2 (SIL2)
- ✓ Safety characteristic: MTTFd > 100 years
- ✓ Fire detection and fire alarm systems EN54
- ✓ EMC-, climate-, over and under voltage as well as shock and vibration tested according to EN50155
- ✓ Requirements for fire behavior of materials and components EN45545 – V0 Material



Siemens AG Österreich
Smart Infrastructure
Fire Safety Application Center
Siemensstraße 90
1210 Vienna, Austria



industry.fsac.at@siemens.com

Subject to changes and errors. The information given in this document only contains general descriptions and/or performance features which may not always specifically reflect those described, or which may undergo modification in the course of further development of the products. The requested performance features are binding only when they are expressly agreed upon in the concluded contract.

© Siemens AG Austria, 2024