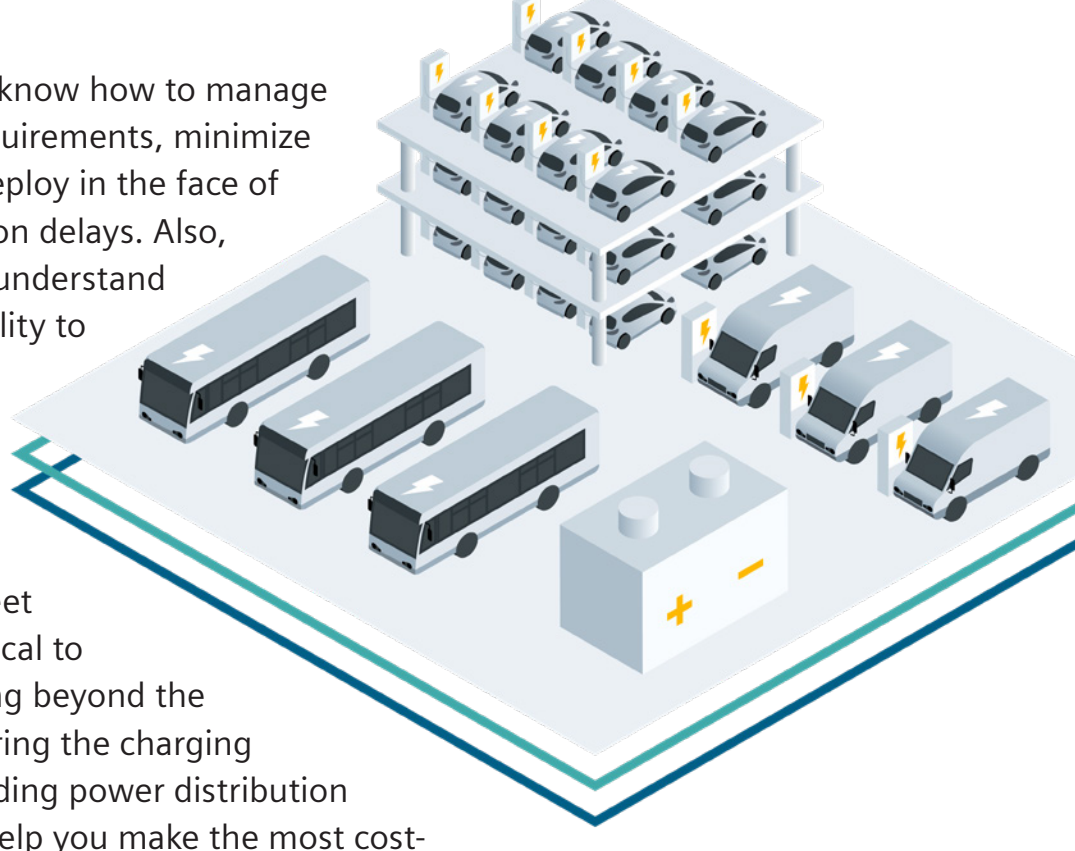


Depot and fleet charging planning simulation and analytics

Companies need to know how to manage vehicle charging requirements, minimize costs, and rapidly deploy in the face of utility interconnection delays. Also, companies need to understand how to retain flexibility to meet evolving business needs and evolving technology.



Planning for your fleet electrification is critical to your success. Looking beyond the vehicle and considering the charging infrastructure, including power distribution requirements, will help you make the most cost-effective implementation decisions so you can best optimize your investment. Siemens has developed an effective planning tool that models prospective electrification to help you make the best decisions for your fleet charging infrastructure.

Siemens simulation tool looks at various key considerations when determining what you need to optimize your depot and maximize your investment.

Fleet specifications

- How many vehicles do you currently have in your fleet and how many do you anticipate having in the future?
- What are your vehicle types?
- What are the vehicles used for and what is required to keep your business going?

Depot specifications

What does your location look like?
Are there any parking constraints or existing processes to consider?



Charger details

- What type of charger do you need for your eFleet?
- How many chargers do you need?
- How much power is required for each charger?

Load management optimization

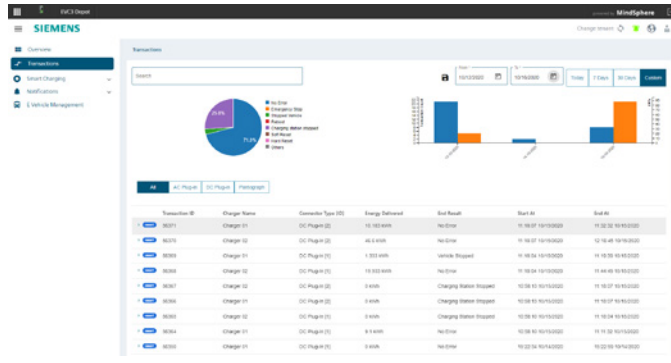
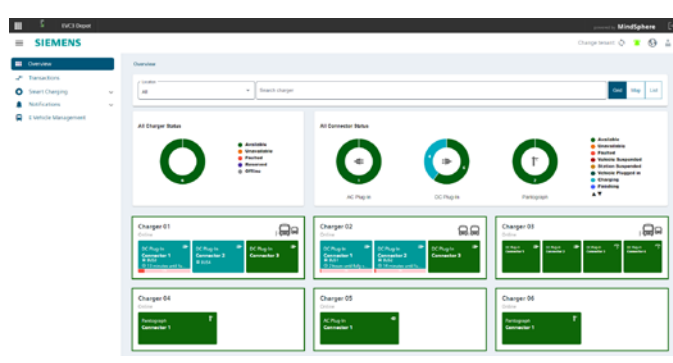
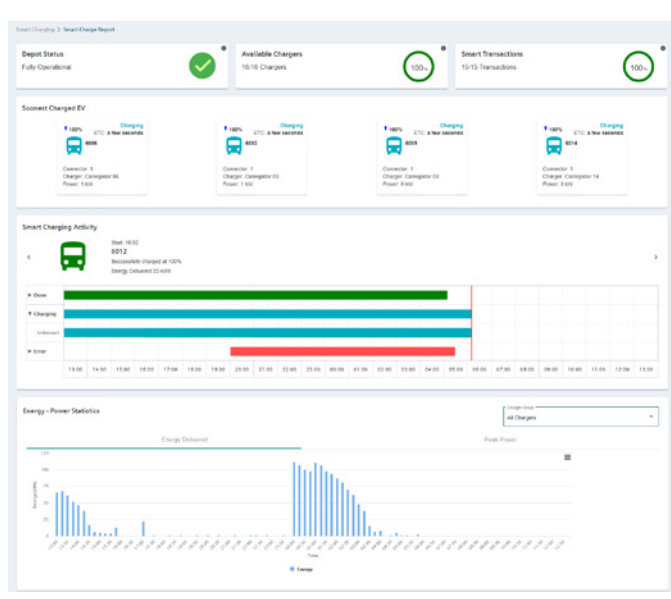
- What load requirements are needed to maximize your charging infrastructure?
- How can you ensure your vehicles are charged when needed?
- When do you need your vehicles charged?

Electrical infrastructure:

- How much power is required to keep your chargers charging your vehicles?
- How quickly do you need to charge your vehicles?
- What grid connections are required?

Energy and market constraints

- What are your local energy rates and how do they factor into your depot management?
- How can you manage charging times based on demand charges?
- What costs do you need to consider for utility interconnection?



Fleet electrification requires detailed planning. Using planning tools and modeling analysis can help simplify decision making, as well as better planning for capital and operating investments. Partner with Siemens to help make the transition smoother, so together we can build a cleaner, more electrified future.

