

Clearguard ACM 200 Axle Counting System

Smart track vacancy detection for cost-effective operations

Rail Automation

A track vacancy detection system supplies the information about whether a track in a particular section is clear or occupied, thereby permitting safe, trouble-free and efficient operations management.

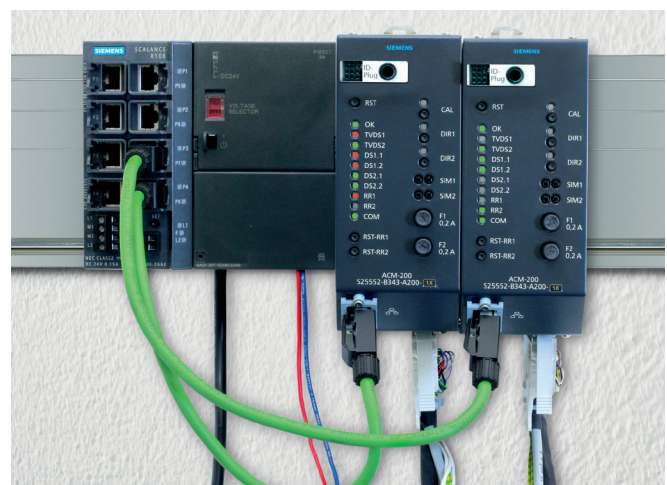
The Clearguard ACM 200 axle counting system is made up of maintenance-free Clearguard ACM 200 modules which are programmed via an ID plug and combined using an Ethernet network and Clearguard ZP D 43 counting heads.

Fields of application:

- metro and tramway systems
- freight lines and depots
- main lines and secondary lines, station areas, switches
- single-track and multiple-track lines
- all traction types
- all common types of car
- track sections of any length
- train speeds of up to 400 km/h (250mph)

Benefits

- Connection to electronic and relay interlockings
- HTML communication for attribute configuration, logging and diagnostics
- Modular, compact hardware
- Deployment of Clearguard ZP D 43



Technical Data

Counting Capacity	32,767 axles per track vacancy detection section 20 axles per second for the Clearguard ZP D 43
Max. number of connectable wheel detectors per ACM	Two counting heads: Clearguard ZP D 43
Max. number of detectable track vacancy detection sections per ACM	2 track vacancy detection sections
Power consumption	Clearguard ZP D 43: 5 W Clearguard ACM: 7.8 W
ACM supply voltage	24 V DC (21.6 V to 31.2 V DC), approx. 1 A

Outputs

Relay contacts for DC

Switching voltage	10 V DC to 72 V DC 10 V AC to 150 V AC
Switching current	2 mA DC to 0.25 A
Switching power	15 W, 2 mA AC bis 1 A

Relay contacts for AC

Switching voltage	24 V (–10%) to 110 V (+10%) AC
Switching current	2 mA to 1 A
Switching power	15 W

Inputs

Voltage range	21.6 V to 72 V DC (max. 6 mA)
Current range	up to 6 mA at 21.6 V to 72 V DC (with series resistor limited to 6 mA)
Operating conditions	–40 °C to +70 °C



Clearguard ZP D 43 (DEK 43)



Trackside connection box
(Clearguard ZP D 43 counting head)

The information in this document contains general descriptions of the technical options available. The required features should therefore be specified in each individual case at the time of closing the contract. For the secure operation of Siemens products and solutions, it is necessary to take suitable preventive action and integrate each component into a holistic, state-of-the-art security concept. Third-party products that may be in use should also be considered. Clearguard® is registered trademark of Siemens AG.



1. Clearguard ACM 200
2. Power Transformer
3. Ethernet Switch
4. Router

Siemens Industry, Inc.
Rail Automation
2400 Nelson Miller Parkway
Louisville, KY 40223
Tel: +1 800 793 7233
www.siemens.com/rail-automation

© All Copy Rights Reserved to
Siemens Industry, Inc., 2015
Subject to change without prior notice. 9/15