

Heavy Duty Safety Switch

Type VBII, 600 Amp, Type 4/4X (Stainless Steel)

Standards and Ratings

- UL Listed under file #E4776
- Meets UL98 for switches and UL 50 for enclosures
- Meets NEMA Standard KS-1 for enclosed switches
- Meets NEC wire bending space requirements
- Rated 10,000 AIC as standard or 200,000 AIC when protected by Class R, T or J fuses rated 600 amp maximum
- 12X overload current rating exceeds 10X industry standard

- Suitable for use as service entrance equipment

Features

- Quick-make and break switching action
- Visible blade design
- Highly visible ON/OFF indication
- Modular design allows quick and easy replacement of parts
- Front removable lugs which can easily be converted to copper body or compression type lugs
- Defeatable dual cover interlock

General Information

| Catalog Number | Volts | Description | Shipping Weight (lbs.) |
|----------------|-------|-----------------------------|------------------------|
| HNF266S | 600 | 2 Pole, 2 Wire, Non-Fusible | 115 |
| HNF366S | 600 | 3 Pole, 3 Wire, Non-Fusible | 120 |

Horsepower Ratings^{1 2 3} - 600 Volts

| Catalog Number | 3 Phase, 480V AC | | 3 Phase, 600V AC | | 600V DC |
|----------------------|------------------|-----|------------------|-----|---------|
| | Std | Max | Std | Max | |
| HNF266S | — | — | — | — | 50 |
| HNF366S ⁴ | — | 400 | — | 500 | — |

Accessories

| Catalog Number | Description |
|----------------|--|
| HA165678 | One Normally Open and Closed Auxiliary Switches |
| HA265678 | Two Normally Open and Closed Auxiliary Switches |
| HA365678 | Low Voltage Auxiliary Switch |
| HG656 | Equipment Ground Lug Kit |
| HG2656 | Isolated Equipment Ground Lug Kit |
| HN656 | Neutral Kit |
| HN678 | 200% Neutral Kit |
| HLC65678 | Copper Lug Kit (1 lug per kit) |
| HCL65678 | Compression Lug Mounting Kit (1 kit/pole required allows (2) lugs/Ø) |

Mechanical Lug Wire Ranges (75°C, Cu/Al)

| Description | Wire Range |
|--------------|----------------------------|
| Line, Load | (2) 1/0 AWG - 750 Kcmil or |
| Neutral | (4) 1/0 AWG - 250 Kcmil |
| Ground | (2) #6 AWG - 250 Kcmil |
| 200% Neutral | (4) #1/0 AWG - 600 Kcmil |
| 200% Ground | (4) #6 AWG - 300 Kcmil |

¹ Dual horsepower ratings: Std - applies when non-time delay fuses are installed.

Max - applies when time-delay fuses are installed.

² Horsepower ratings listed also apply to Design E motors through 150HP at 240V, 300HP at 480V and 350HP at 600V with no derating.

³ Also rated 200HP on 3 phase, 240V AC systems.

⁴ Rated 50HP on 250V DC systems.

Product Specification Sheet HD600.8

Answers for industry.

SIEMENS

Product Specification Sheet #HD600.8 (page 2 of 2)

Replacement Parts

| Catalog Number | Description |
|----------------------|---------------------------------|
| HNB66 ^{1 2} | Non-Fusible Replacement Base |
| HH65678S | Replacement Handle/Handle Guard |
| HL65678 ² | Replacement Lug (1 lug per kit) |
| HM66 | Replacement Mechanism |
| ³ | Replacement Door |

Compression Lugs ⁴

| Wire Size | Burndy | | Thomas-Betts | | IlSCO | |
|-----------|--------------------|---------|---------------------|----------------|---------------------|---------------------|
| | CU Only | CU/AL | CU Only | CU/AL | CU Only | CU/AL |
| 2/0 | YA26-N | YA26-A1 | 54160 54951BE | | | IACL-2/0 ACN-2/0 |
| 3/0 | YA27-L Box YA27 | YA27A3 | 54165-TB 54965BE | | CRB-3/0 CRB-3/OL | IACL-3/0 ACN-3/0 |
| 4/0 | YA28-L Box YA28 | YA28A3 | 54170 54970BE | 60150 | CRB-4/0 CRB-4/OL | IACL-4/0 ACN-4/0 |
| 250 Kcmil | YA29-L Box YA29 | YA29A1 | 54113 54913BE | 61156 60156 | CRA-250 CRA-250L | IACL-250 ACL-250 |
| 300 Kcmil | YA30-L YA30 | YA30A1 | 54114 54914BE | 61162 60162 | CRA-300 CRA-300L | IACL-300 ACL-300 |
| 350 Kcmil | YA31-L YA31 | YA31A1 | 54915BE | 61165 60165 | CRA-350 CRA-350L | IACL-350 ACL-350 |
| 400 Kcmil | YA32-N | | 54116 54916BE | | | |
| 500 Kcmil | YA34-L6 YA34-N | | | 61171 | | IACL-500 |

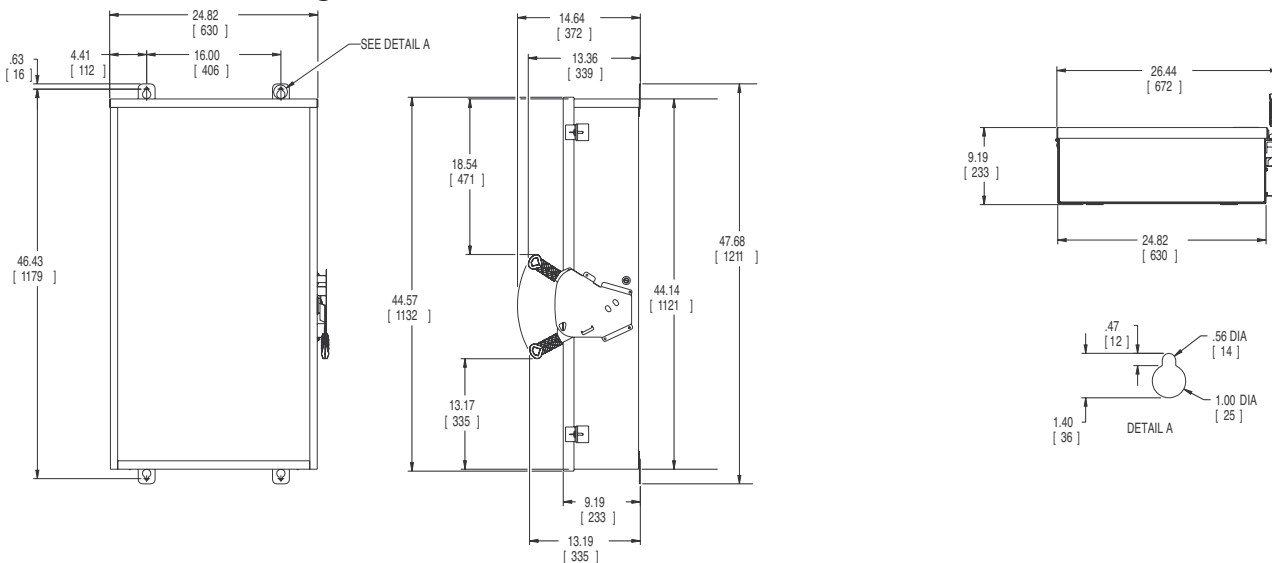
1 Replacement Base contains one pole.

2 Lugs are not provided on Line and Load Replacement Base Assemblies. Order Lug Kit.

3 Place "DOOR" at the end of the switch catalog number.

4 If compression lugs are used, order compression lug kit HCL65678.

Dimension Drawing



No knockouts in enclosures.
Dimensions shown in inches and millimeters ().
Dimension shown accurate to $\pm 1/8$ inch.

| | LINE SIDE WIRE BEND | LOAD SIDE WIRE BEND |
|-----------|---------------------|---------------------|
| Non-fused | 17.35 (441) | 16.48 (419) |

Enclosure: 304 Stainless Steel
.075 Thick (14 Gauge)