



QUICK REFERENCE GUIDE TO INSTALLING UPDATED SOFTWARE VERSION 9V121-A01M ON THE 80214 PROCESSOR MODULE IN THE MODEL 3000 GCP

Document Number SIG-QG-09-07A.1

WARNING

DURING MODULE CHANGE OUT, SOFTWARE CHANGE, REBOOT, AND CALIBRATION PROCEDURES, WARNING DEVICES MAY NOT OPERATE AS INTENDED. TAKE ALTERNATE MEANS TO WARN PEDESTRIANS, EMPLOYEES AND VEHICULAR TRAFFIC.

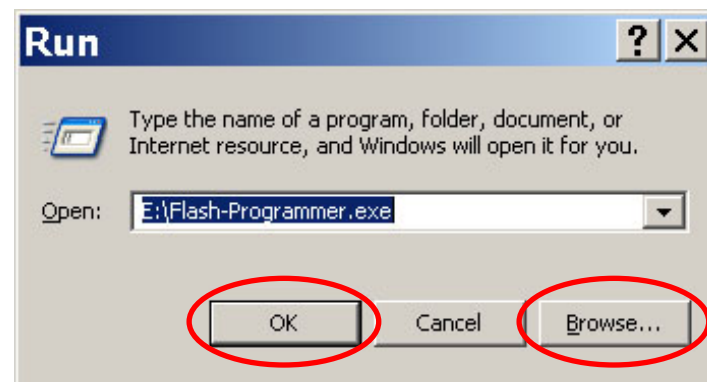
NOTE

If the software currently installed in the A80214 Module is version 9V121-A01H, 9V121-A01J, 9V121-A02J or 9V121-A01L, updating to the M-level software will not require the system to be "Set to Default" and the system will not need to be reprogrammed or recalibrated. However, if updating earlier versions of software, the system will require "Set to Default" and the system must be reprogrammed and recalibrated.

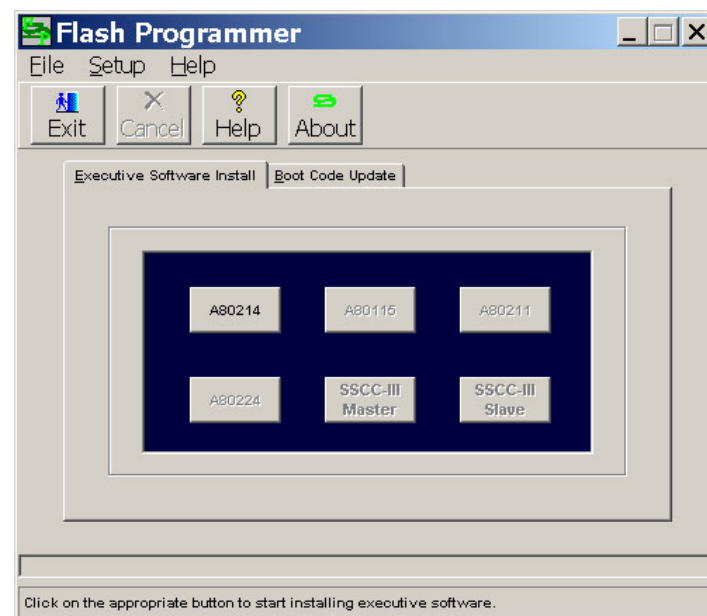
SETUP

The Flash Programmer is a standalone Windows application that does not require an installation before running. It will run directly from a CD. It also can be copied to another location (i.e. USB drive) so long as all files that came with Flash Programmer are also copied to the same location.

1. Insert the Field Update Disc for Model 3000 GCP (Siemens CD Z224-9V952-A01D) into the CD drive of the computer used to download the new files.
2. If the program does not start automatically, select **START > RUN** from the Windows Taskbar at the bottom of the screen.
3. Click the **Browse** button, select the CD drive and then select the Flash-Programmer.exe file. Click **OK**.



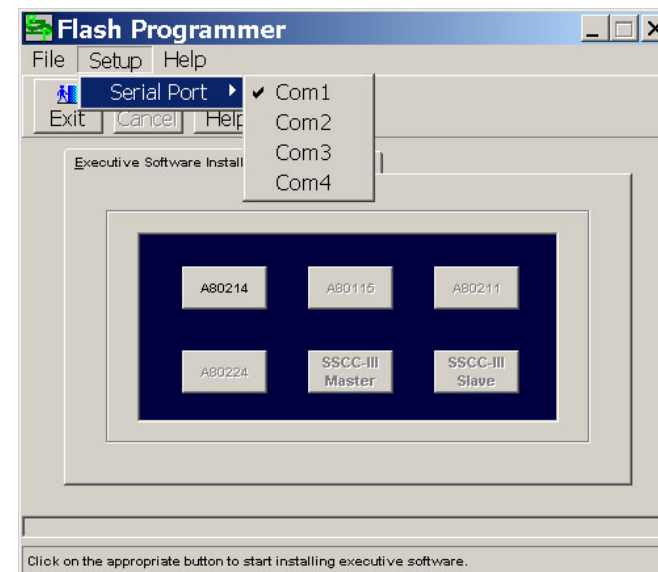
4. The Flash Programmer screen opens.



Flash Programmer Screen

NOTE

By default, the Com1 port on the computer is selected for updating software. The Com port can be changed to a different port by selecting the menu item **Setup > Serial Port** on the Flash Programmer screen. Ports Com1 through Com4 are supported.



NOTE

The Boot Code must be updated if the executive software version is 9V121-A00B or earlier. If the executive software is newer, proceed to **Installing the Executive Software**.

UPDATING BOOT SOFTWARE

WARNING

INTERRUPTING GCP POWER WILL ACTIVATE THE CROSSING WARNING SYSTEM.

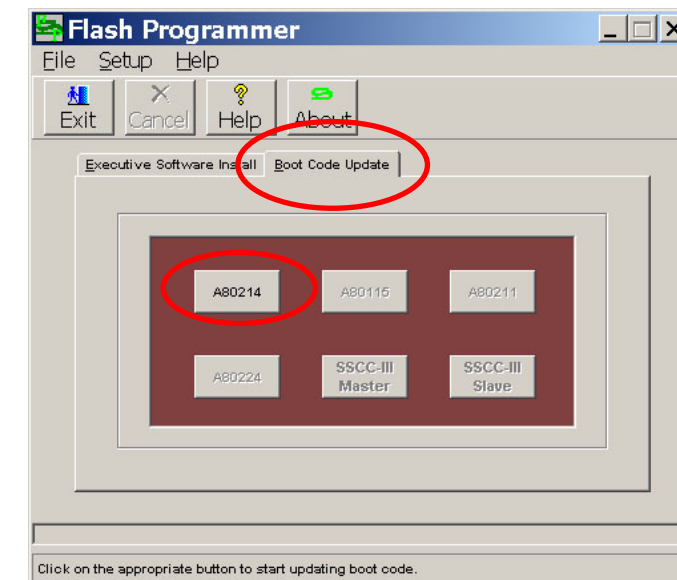
CAUTION

DO NOT CANCEL OR ABORT THE BOOT CODE UPDATE WHILE IN PROGRESS! TO DO SO WILL MAKE THE A80214 MODULE INOPERATIVE AND UNABLE TO BE PROGRAMMED.

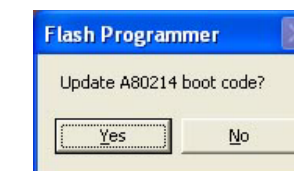
NOTE

Before proceeding with the update of the boot software, set the Model 3000 GCP power switch to **OFF**.

1. Connect an appropriate cable from the computer serial port to J2 of A80214 Module.
2. On the Flash Programmer screen, select the **Boot Code Update** tab.

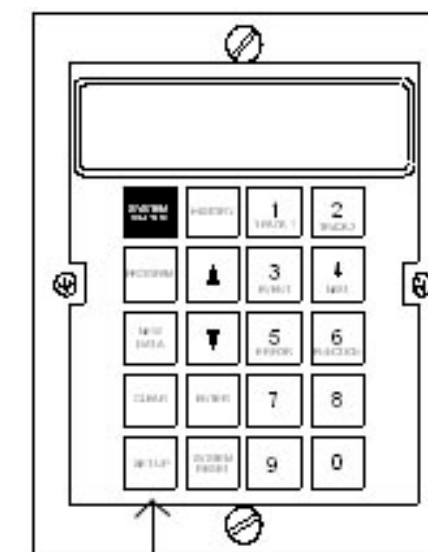


3. Select the **A80214** button.
4. Select **Yes** on the **Update A80214 boot code** prompt.



Update A80214 Boot Code Prompt

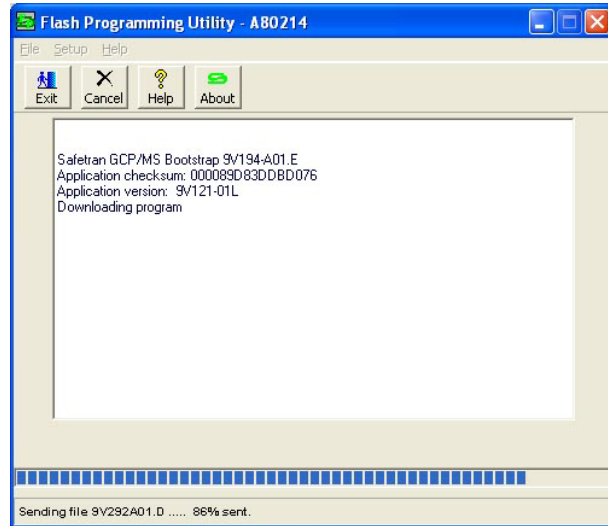
5. Press and hold the **SETUP** key on the Model 3000 GCP system keypad (Keyboard/Display A80019) while setting the Model 3000 GCP power switch to **ON**.



SETUP KEY

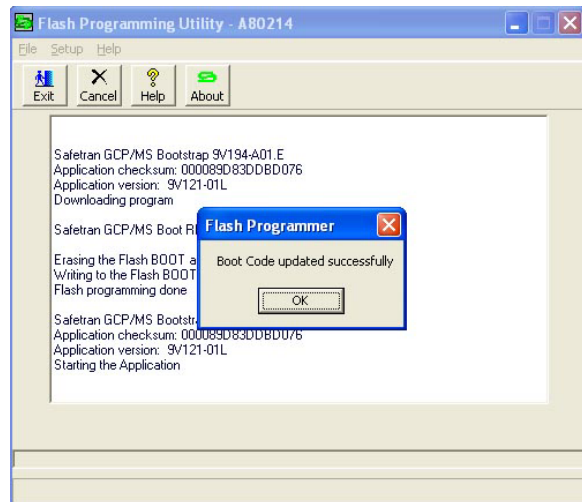
SETUP Key Location

- When the progress bar on the bottom of the Flash Programming Utility screen indicates that it has started to send a file, release the **SETUP** key.



Download Progress on the Flash Programming Utility Screen

- The update is complete when the **Boot Code updated successfully** prompt appears.



Boot Code updated successfully Prompt

INSTALLING THE EXECUTIVE SOFTWARE

WARNING

INTERRUPTING GCP POWER WILL ACTIVATE THE CROSSING WARNING SYSTEM.

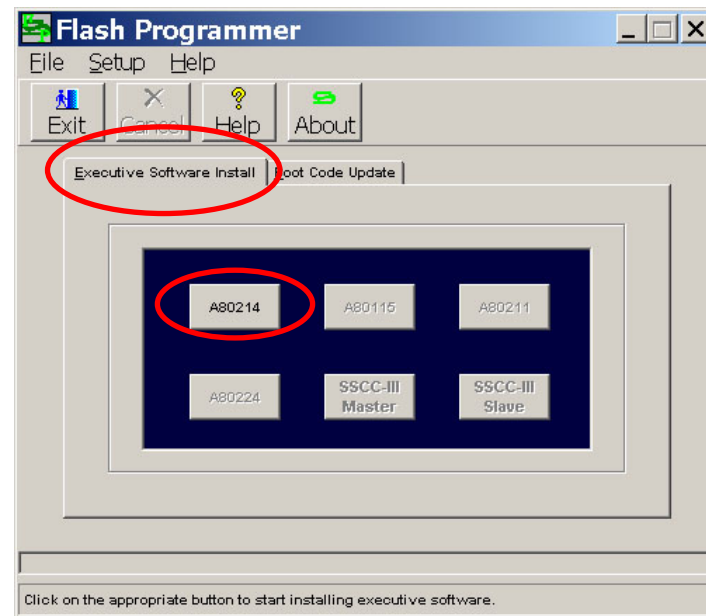
NOTE

Before proceeding with the installation of the executive software, set the Model 3000 GCP power switch to **OFF**.

NOTE

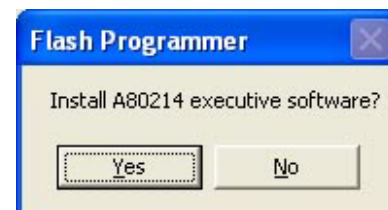
During the installation of the executive software, respond appropriately to all questions when prompted. If the installation is canceled or aborted, the target module may no longer operate and the executive software must be reinstalled before being used.

- To install the executive software in the A80214 Module, connect an appropriate cable from the computer serial port to J2 of A80214 Module.
- On the Flash Programmer screen, select the **Executive Software Install** tab, then select the **A80214** button.



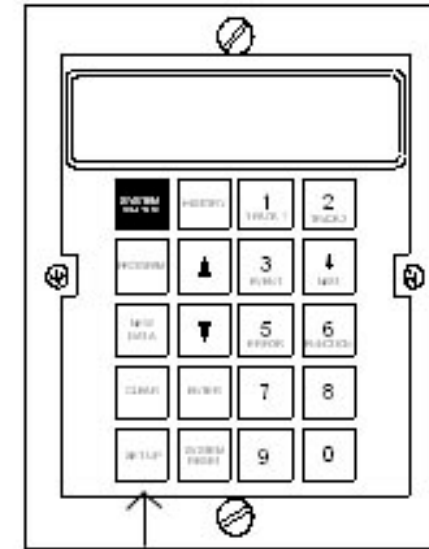
Flash Programmer Screen

- Select **Yes** on the **Install A80214 executive software** prompt.



Install A80214 Executive Software Prompt

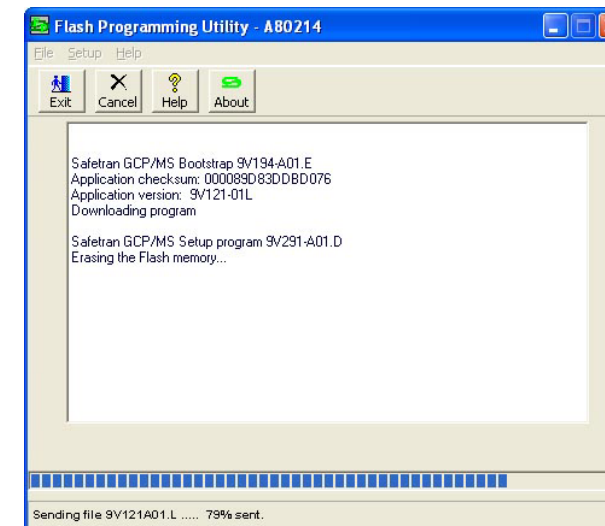
- Press and hold the **SETUP** key on the Model 3000 GCP system keypad (Keyboard/Display A80019) while setting the Model 3000 GCP power switch to **ON**.



SETUP KEY

SETUP Key Location

- When the progress bar at the bottom of the Flash Programming Utility screen indicates that it has started to send a file, release the **SETUP** key.

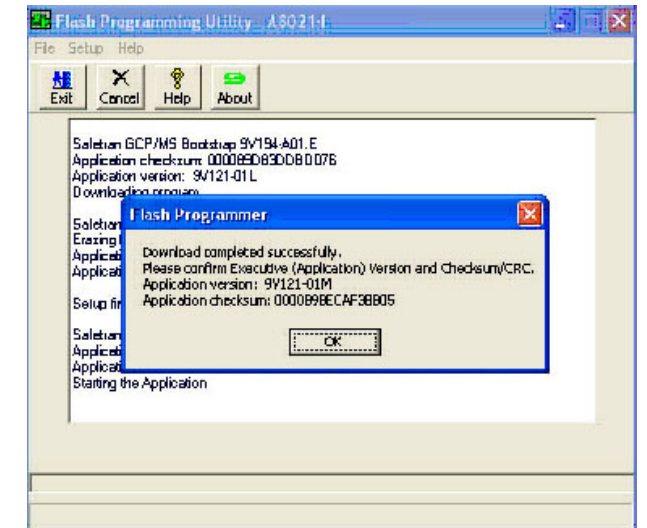


Download Progress on the Flash Programming Utility Screen

- Installation is complete when the **Download completed successfully** prompt appears. Verify that the Application (Executive) Version and the Application Checksum (CRC) displayed are correct.

Application version = **9V121-01M**

Application checksum = **898ECAF3BB05**



Download Completed Successfully Prompt

WARNING

AFTER DOWNLOADING THE SOFTWARE, TESTS MUST BE PERFORMED TO VERIFY PROPER OPERATION OF THE GCP SYSTEM PRIOR TO PLACING THE SYSTEM IN SERVICE.