



| TIA Selection Tool

Release Notes V2022.06

Features

Only available in offline version

- **Integrated drive dimensioning** (see [here](#))
- **Control Panel Design** - Electrical dimensioning of main circuits according to IEC and UL (see [here](#))

Offline and Cloud Version

- **Energy distribution and measurement**
 - New configurator for fuse switch disconnectors 3NP1 up to 630A
 - New configurator for switch disconnecter 3LD
 - New configurator for switch disconnectors with fuses 3KF
- Integration **DC-UPS** in the **power supply wizard**



Product updates

New products and updates for ...

I/O Systems

- **ET 200SP**
 - Added technology module SITRANS FST070 (7ME3448-6AA00-0BB1)
 - Adaptation accessory rule for CM 1x DALI (6ES7137-6CA00-0BU0)
 - Bus adapter BA 2xM12 added at interface modules and CPU's

IPC

- Data updated

Industrial Communication / Power Supplies / Identification and Localization / Connection system

- **Identification and Localization**
 - Various adjustments



Product updates

New products and updates for ...

Industrial Communication / Power Supplies / Identification and Localization / Connection system

• SCALANCE

- SCALANCE W786 and SCALANCE W788 - KEY plugs added
- SCALANCE XF204-2BA and SCALANCE XF204-2BA DNA - bus adapter added
- SCALANCE XM416-4C and SCALANCE XM416-4C (L3 int.) - accessories rule adapted
- SCALANCE XR - Pictures updated
- SCALANCE XC216-3G PoE (DC 54 V) (6GK5216-3RS00-5AC2) and SCALANCE XC216-3G PoE (DC 24 V) (6GK5216-3RS00-2AC2) added
- SCALANCE XB004-2LD (6GK5004-2BF00-1AB2) added
- SCALANCE XF204 (2xBA RJ45 pre-assembled) - configure tab and bus adapter added

• SITOP

- SITOP RED1200/DC24/48V/2X40A (6EP4348-7RB00-0AX0) added



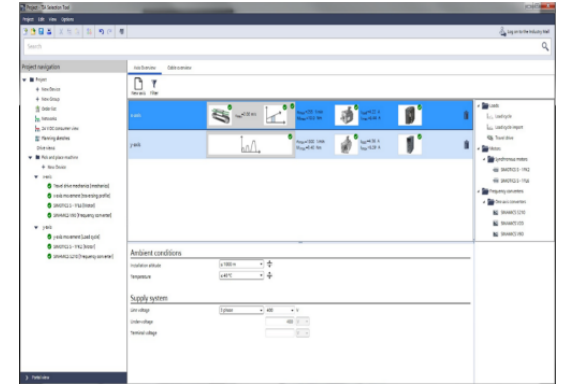
Features of the integrated drive dimensioning

New functionalities and products

- Extension of temperature range for dimensioning up to 5°C - 80°C (required for 1FS2 motors)
- Printing: Options which are not ordered, will not be printed
- SIMOGEAR: Y00 option handling adjusted to DT-Configurator
- Performance of motion profile optimized, especially for tilted rotary table
- Converter: Shows frame size in order list and project documentation
- Lots of other bug fixes and improvements

Not supported

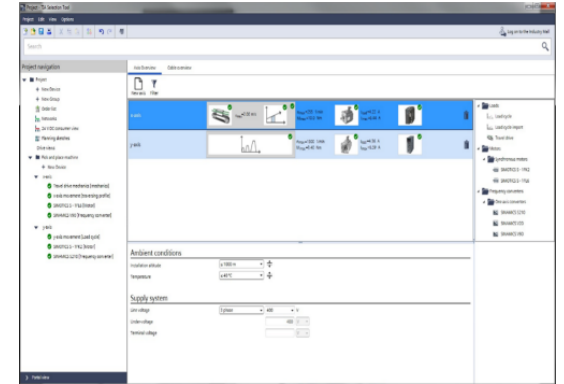
- Help system: There is no special help system provided
- No project import



Features of the integrated drive dimensioning

Known issues

- 1FK2306-2AC and 1FK2306-4AC show wrong shaft height. Should be 63mm and 80mm.
- 1FE2 configuration: The option for ordering stator and rotor separately does not work correctly.
- SINAMICS S120 Drive-CLiQ editor not yet complete. So far only simple DQ cable selection available.
- SINAMICS S120 printing documentation not yet complete.
- After loading older projects, SINAMICS G115D products are incorrectly displayed as no longer available. Selected inverters must be deleted and reselected manually.
- Assignment of axes to SINUMERIK CPUs is not checked for viability.
- 1FK2 with planetary gears - Filtering and sorting currently not according to the system values.
- There are configurations which are not available in the 24 V DC power consumer view.
- There are situations in which options that have already been configured cannot be retained after changing a selected motor.



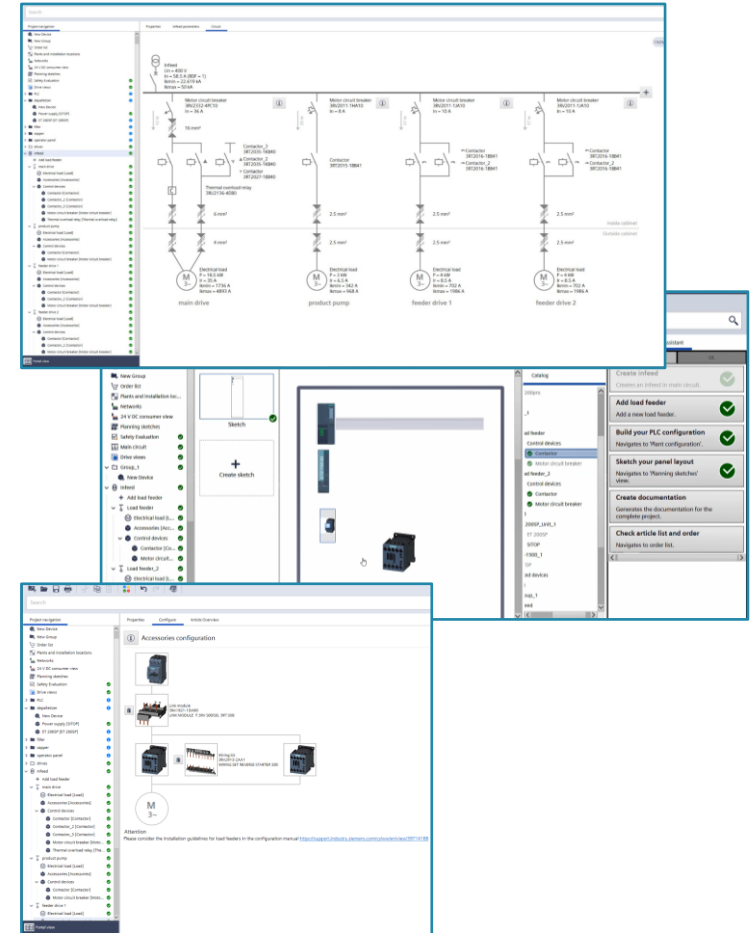
Features of Control Panel Design

New functionalities

- For configuration of US main disconnects additional devices with ETU 560, 820, 830, 850 und 860 can be selected.

The following functions are new and only available as beta function:

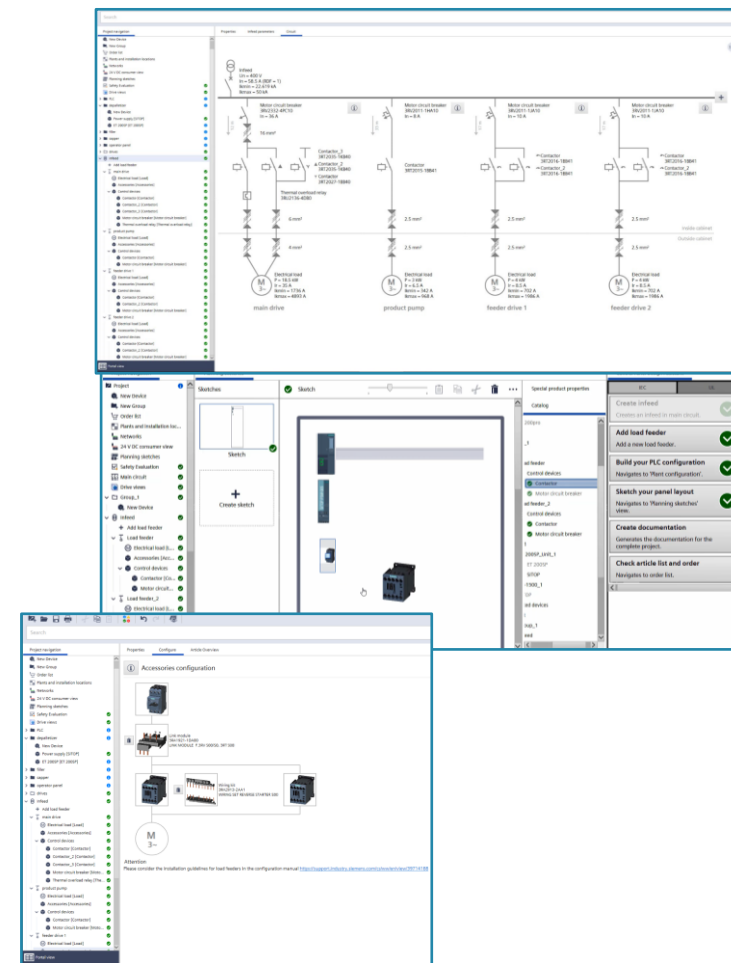
- Configuration of load feeders with power supplies: for IEC networks combinations with SITOP power supplies can be dimensioned now. A pre-configured SITOP power supply can be selected as electrical load. For this feeder a suitable protection device is configured and a cable dimensioning is proceeded.
- For load feeders with hybrid starters for ET 200SP load groups are now supported.
- For IEC load feeders with user defined loads molded-case circuit-breaker 3VA with system protection can be configured.



Features of Control Panel Design

Known issues

- For soft starter combinations, which are configured for failsafe functionality with safety level SIL2 or SIL3, only failsafe soft starters should be selected, if filter type of protection is set to “With motor circuit breaker”, because otherwise TIA Selection tool can crash during calculation of the configuration.
- In user defined loads a selection of miniature circuit breaker 5SY is only possible, when the maximum short circuit current of the infeed is not higher than 35kA. Backup protection is not considered.
- With adding load feeders in main circuit view, which belong to an ET 200SP load group, it can happen, that they are not displayed correctly. To fix this problem, please leave the main circuit view and reopen it again.
- For load feeders with 3-phase SITOP power supply the phase connection is incorrectly displayed in the graphical view in the user interface and in the printout.



Disclaimer

© Siemens 2022

Subject to changes and errors. The information given in this document only contains general descriptions and/or performance features which may not always specifically reflect those described, or which may undergo modification in the course of further development of the products. The requested performance features are binding only when they are expressly agreed upon in the concluded contract.

All product designations may be trademarks or other rights of Siemens AG, its affiliated companies or other companies whose use by third parties for their own purposes could violate the rights of the respective owner.