

Heavy and General Duty Double Throw Safety Switch

Type VBII, 200 Amp, Type 3R (Outdoor)

Standards and Ratings

- UL Listed under file #E4776
- Meets UL98 for switches and UL50 for enclosures
- Suitable for use as Transfer Equipment on optional standby systems as defined by Article 702 of the NEC
- Meets NEMA Standard KS-1 for enclosed switches (Type HD)
- Meets NEC wire bending space requirements
- Suitable for use as service equipment
- AIC Ratings
General Duty 10,000 AIC when protected by Class H or 100,000 AIC when protected by Class R, J or T fuses (fuse ampere rating must not exceed switch ampere rating)
Heavy Duty 10,000 AIC with Class H or 200,000 AIC when used with or

protected by Class R, J or T fuses (fuse ampere rating must not exceed switch ampere rating)

Features

- Quick-make and break switching action
- Visible blade, double break construction
- Highly visible ON/OFF indication
- Modular design allows quick and easy replacement of parts
- Front removable lugs which can easily be converted to copper body or compression type lugs
- Defeatable dual cover interlock
- All copper current carrying parts ¹
- Tangential knockouts
- Handle is padlockable in OFF position

General Information

Catalog Number	Max AC Volts	Description	Shipping Weight (lbs.)
General Duty			
DTGNF224R	240	Non-fusible, 2 Pole, 2 Wire	81
DTGNF224NR	240	Non-fusible, 2 Pole, 3 Wire	82
DTGNF324R	240	Non-fusible, 3 Pole, 3 Wire	84
DTGNF324NR	240	Non-fusible, 3 Pole, 4 Wire	85
Heavy Duty			
DTF224R ²	240	Fusible, 2 Pole, 2 Wire	91
DTF324R ²	240	Fusible, 3 Pole, 3 Wire	94
DTF364R ²	600	Fusible, 3 Pole, 3 Wire	94
DTNF224R	240	Non-fusible, 2 Pole, 2 Wire	81
DTNF324R	240	Non-fusible, 3 Pole, 3 Wire	84
DTNF364R	600	Non-fusible, 3 Pole, 3 Wire	84

Mechanical Lug Wire Ranges (75°C, Cu/Al)

Description	Wire Range
Line, Load Neutral	#6-250 kcmil
Ground	#14-4 AWG

¹ Lugs are aluminum alloy as standard. Optional copper body lugs are available.

² Fusible switches accept: Class H fuses as standard or Class R or T fuses with kit, Class J fuses (move load base).

Product Specification Sheet HD200.8

Answers for industry.

SIEMENS

Product Specification Sheet #HD200.8 (page 2 of 3)

Horsepower Ratings ¹

Catalog Number	240V 1Ø		240V 3Ø		480V 3Ø		600V 3Ø		250V DC	
	Std	Max	Std	Max	Std	Max	Std	Max	Std	Max
General Duty										
DFGNF224R	—	15	—	60	—	—	—	—	—	40
DFGNF224NR	—	15	—	60	—	—	—	—	—	40
DFGNF324R	—	15	—	60	—	—	—	—	—	40
DFGNF324NR	—	15	—	60	—	—	—	—	—	40
Heavy Duty										
DTF224R	15	—	25	60	—	—	—	—	40	—
DTF324R	15	—	25	60	—	—	—	—	40	—
DTF364R	15	—	25	60	50	125	60	150	40	—
DTNF224R	—	15	—	60	—	—	—	—	—	40
DTNF324R	—	15	—	60	—	—	—	—	—	40
DTNF364R	—	15	—	60	—	125	—	150	—	40

Accessories

Catalog Number	Description
General & Heavy Duty Double Throw Switches	
HG61234	Equipment Ground Lug Kit
HG261234	Isolated Equipment Ground Lug Kit
HNC264	Neutral Kit
HS200	2.00" Type "HS" Outdoor Hub
HS250	2.50" Type "HS" Outdoor Hub
Heavy Duty Double Throw Switches Only	
HA161234	Auxiliary Switch (1-NO & 1 NC) ²
HA261234	Auxiliary Switch (2-NO & 2 NC) ²
HA361234	Low Voltage Auxiliary Switch ²
HR64	Class R Fuse Clip Kit (3 fuse clips per kit, (2) kits required per switch)
HLC64	Copper Lug Kit (9 lugs per kit) ²
HT24	300V Class T Kit (2) required per pole
HT64	600V Class T Kit (2) required per pole

Replacement Parts

Catalog Number	Description
HBB64	Fusible Load Side Replacement Base (2) kits required per switch
HFB64	Fusible Line Side Replacement Base (2) kits required per switch
HNB64	Non-fusible Replacement Line Base (2) kits required per switch
HH61234	Replacement Handle/Handle Guard
HL64	Replacement Lugs (3 lugs per kit)
HM64	Replacement Mechanism ²
³	Replacement Door

¹ Dual horse ratings: Std - applies when non-time delay fuses are installed.

Max - applies when time-delay fuses are installed.

² (2) required per switch (one for each of the two line bases).

³ Catalog number is same as switch catalog number plus "DOOR" suffix.

Product Specification Sheet #HD200.8 (page 3 of 3)

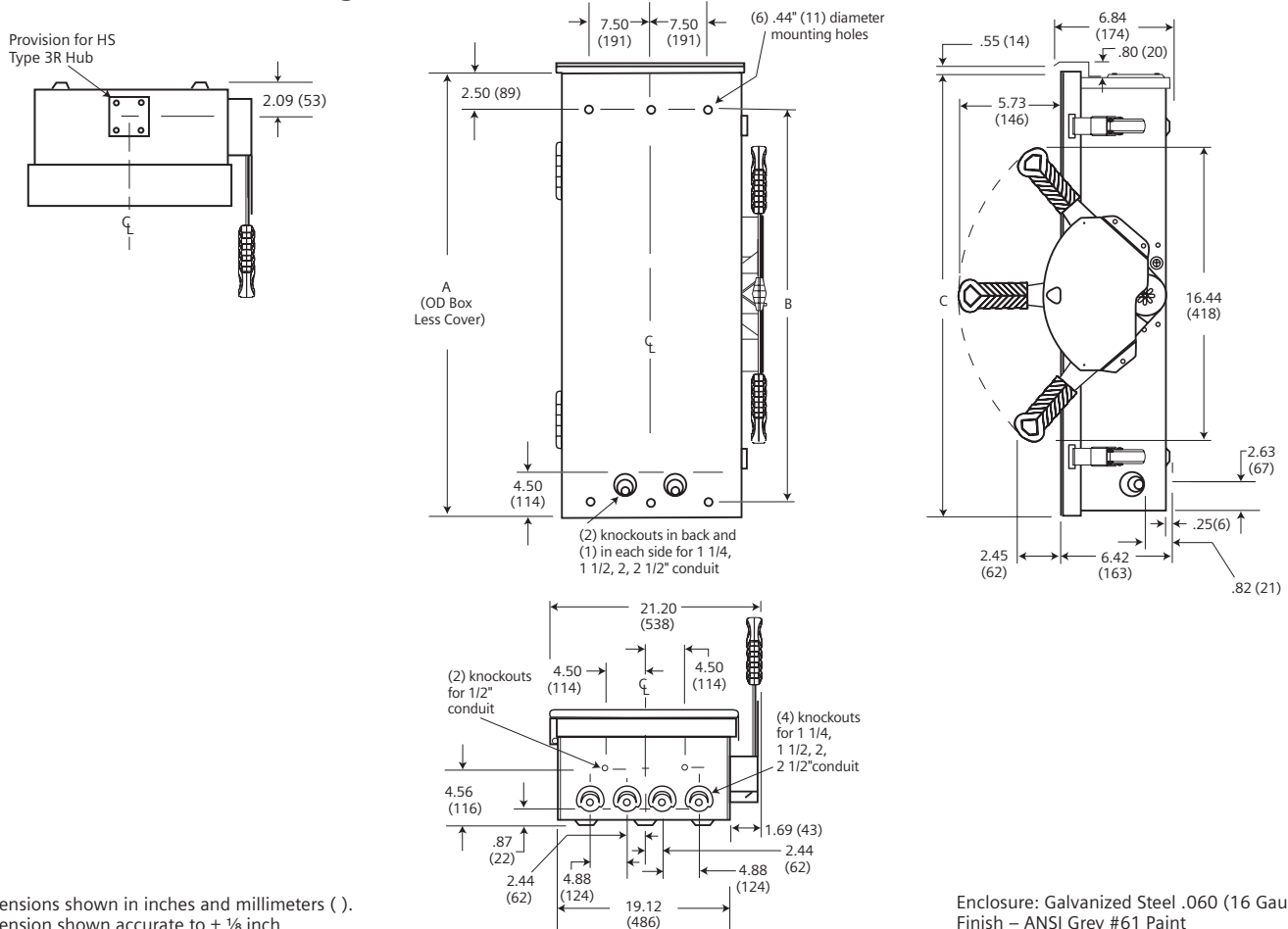
Compression Lugs (UL listed for field installation)

Wire Size	Burndy		Thomas-Betts		Ilco	
	CU ONLY	CU/AL	CU ONLY	CU/AL	CU ONLY	CU/AL
#2	YA2C-L BOX YA2C	YA2CA1	54142-TB	60117	CRB-2 CRB-2L	IACL-2 ACN-2
#1	YA1C-L BOX YA1C	YA1CA1	54147 54947BE	60123	CRA-1-38 CRA-1L	ACN-1
1/0	YA25-L BOX YA25	YA25A1	54153-TB 54949BE	60129 61130	CRA-0 CRA-1/0L	IACL-1/0 ACN-1/0
2/0	YA26-L3 YA26	YA26A6	54158 256-30695-1229 54910BE	60135 61136	CRA-2/0 CRA-2/0L	ACL-2/0 IACL-2/0
3/0	YA27-L3 YA27	YA27A1	54163-TB	60141 61142	CRC-3/0 CRB-3/0L	IACL-3/0 ACL-3/0
4/0	YA28-L3 YA28-TC38	YA28A1	54168 256-30695-1253	61148 60147	CRC-4/0 CRB-4/0L	IACL-4/0 ACL-4/0
250 Kcmil	YA29-L7		54173 54913BE	61156	CRA-250	

Dimensions and Wire Bending Space

Catalog Number	Dimensions			Wire Bending Space	
	A	B	C	Top	Bottom
DTGNF224R DTGNF224NR DTGNF324R DTGNF324NR DTNF224R DTNF324R DTNF364R	36.00 (914)	31.00 (787)	36.66 (931)	7.50	7.50
DTF224R DTF324R DTF364R	49.48 (1257)	44.50 (1130)	50.13 (1273)	7.50	10.00 10.00 7.50

Dimension Drawing



Dimensions shown in inches and millimeters ().
Dimension shown accurate to $\pm 1/8$ inch.

Enclosure: Galvanized Steel .060 (16 Gauge)
Finish - ANSI Grey #61 Paint