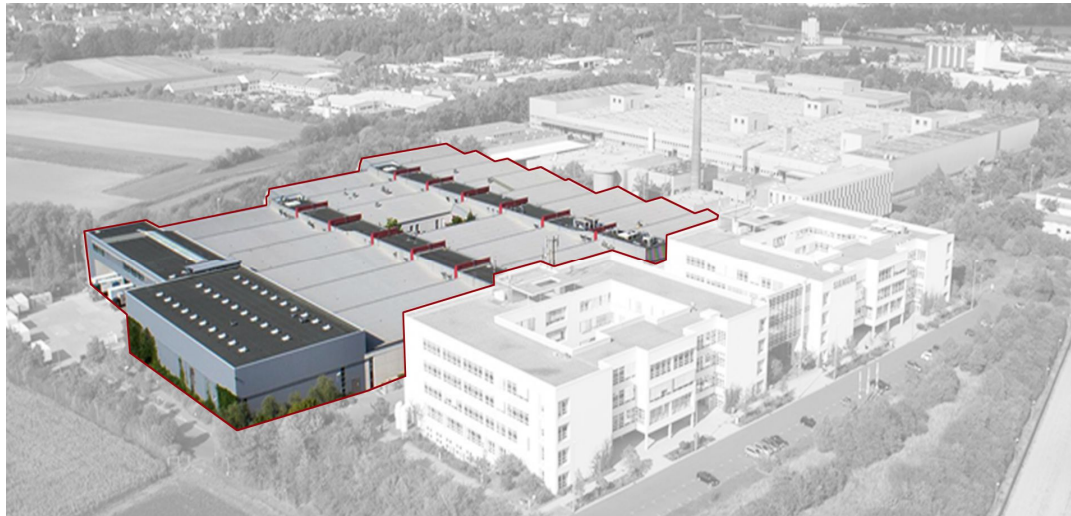





# Facts and figures (GWE)

## Electronics factory in a mid-volume high-mix market



 Area	
Foundation	1971
Location: ~247.000 m <sup>2</sup>	GWE: ~45.000 m <sup>2</sup>

 GWE key facts	
Employees	1200
Business type	Make to order

 Customer orientation	
Mix of mid-volume and low-volume	>1.000 different product variants
Agility	Managing order volume fluctuation between 10% to 150%

We successfully implement digitalization and flexible automation. GWE is an outstanding example for each step of the digital value chain - consisting the digital twin of

\*the product design \*the production process \*the production engineering \*the production performance and \*services.



**SINUMERIK**  
machine tool CNC control



**SIMOTION**  
motion control systems



**SINAMICS**  
drives systems

# From a Lean to a Lean Digital Factory



Digitalization



Operational Excellence with Digitalization and Flexible Automation

Time-to-Market



Quality- Enhancement



Flexibility - Delivery



Efficiency – productivity



Initial Lean Process

Lean Digital Factory

2002

2010

2013

2017

2020

