

# Test-Block Bypass Meter Sockets

Ring Type Commercial Safety Sockets (No Disconnect) 600V AC Max.

## FEATURES

- EUSERC-Approved Test Block Bypass.
- 100 and 200 Amp versions.
- 1 and 3 Phase up to 600V.
- OH/UG Rated.

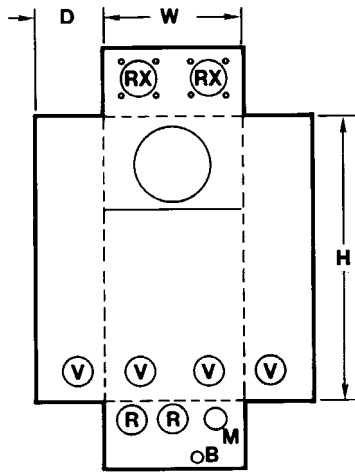


Figure 1

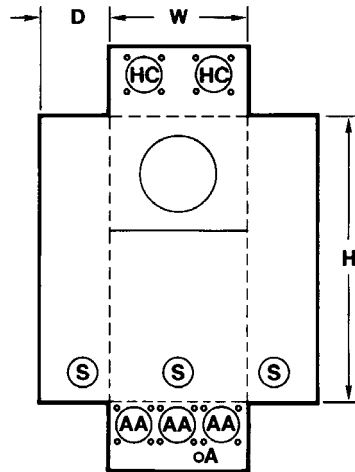
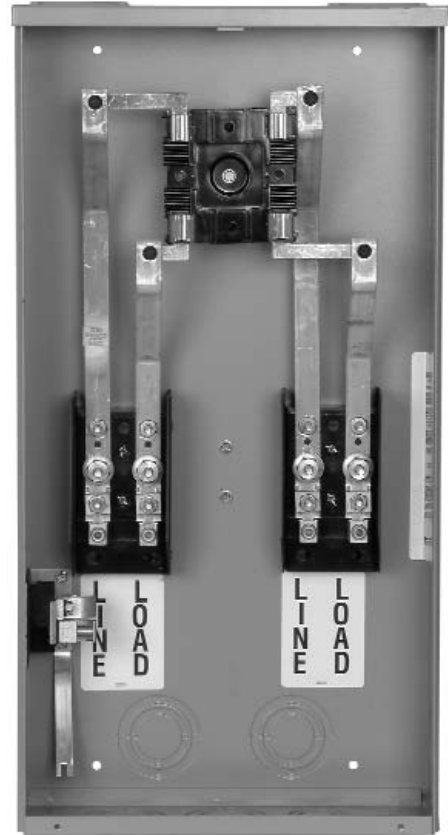


Figure 2



Test Block Bypass										
Catalog Number	Dimensions (inches) (1)			Amps Cont.	Service	Lugs	No. of Jaws	5th Jaw	Hub	KO Fig.
	H	W	D							
<b>1 Phase, 3 Wire</b>										
MS14TB	24.00	12.50	4.88	100	OH/UG	#6-2/0 Box Lug	4	UX001WL	RX	1
MS24TB	30.00	14.25	6.38	200	OH/UG	#1/0-250 kcmil	4	UX005B	HC	2
<b>3 Phase, 3 Wire</b>										
MS15TB	24.00	12.50	4.88	100	OH/UG	#6-2/0 Box Lug	5	Installed	RX	1
MS25TB	30.00	14.25	6.38	200	OH/UG	#1/0-250 kcmil	5	Installed	HC	2
<b>3 Phase, 4 Wire</b>										
MS17TB	24.00	12.50	4.88	100	OH/UG	#6-2/0 Box Lug	7	-	RX	1
MS27TB	30.00	14.25	6.38	200	OH/UG	#1/0-250 kcmil	7	-	HC	2

# fastfax

# SIEMENS

Siemens Energy & Automation, Inc. • 3333 Old Milton Parkway, Alpharetta, GA 30005 • 1-800-964-4114 • [www.sea.siemens.com/reselec](http://www.sea.siemens.com/reselec)

©2005 Siemens Energy & Automation, Inc. All Rights Reserved.

Siemens is a registered trademark of Siemens AG. Product names mentioned may be trademarks or registered trademarks of their respective companies.

Specifications are subject to change without notice