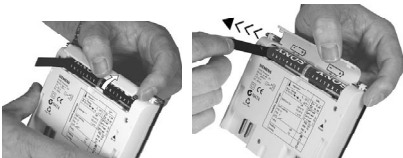


Commissioning and quick start



1. Remove controller from its base and open cover of the battery compartment.
2. Remove the black battery transit tab. The controller will switch itself on.
3. Close the battery compartment and replace the controller.

Selecting the operating mode



The operating mode selector enables you to select 5 different operating modes:

- Automatic operation with a maximum of 2 heating periods
- Continuously comfort mode
- Continuously economy mode
- Continuously frost protection mode
- 24-hour mode with current comfort setpoint

Changing temporarily the current setpoint temperature



The change is maintained until the next switching point is reached!

1. When pressing the or button for the first time, the currently valid setpoint temperature will be displayed. It can be readjusted in increments of 0.2 °C (max. +/-4 °C).
2. After 3 seconds, the initial display will automatically appear again.

Changing temporarily the temperature setpoint (savings tip)



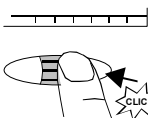
In operating modes **Auto** and , this button can be pressed to make a manual change from comfort to economy mode, or vice versa. The change will automatically be cancelled when reaching the next switching point or when selecting another operating mode.

Symbols

	"Time" menu	Auto	Automatic operation		Comfort setpoint	
T	"Temperature" menu		Continuously comfort mode		Economy setpoint	
	"Heating periods" menu		Continuously economy mode		Setpoint frost protection	
			Frost protection			
	Battery change		24-hour mode		1 heating period	
	Heating active				2 heating periods	Time schedule

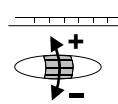
Functions of the roller selector

Press:



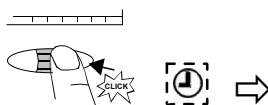
- You access the menu level
- You activate the menu
- You save the inputs
- You switch to the next menu item
- You accept the menu item

Roll:



- You go from one menu to the next
- You change the setting variables (temperature in increments of 0.2 °C, time in increments of hours and minutes)
- You select predefined functions

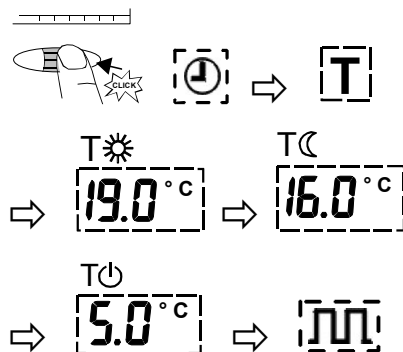
Setting the time of day



If no button is pressed for 10 seconds, the setting displayed will be accepted and the initial display will appear again.

1. Press: You enter the menu level; **the clock flashes.**
2. Press: You select the next setting variable; **the hours flash.**
3. Roll: You set the current hour.
4. Press: You select the next setting variable; **the minutes flash.**
5. Roll: You set the current minute.
6. Press: You select the next menu; **the T flashes.**
(Change not necessarily required)

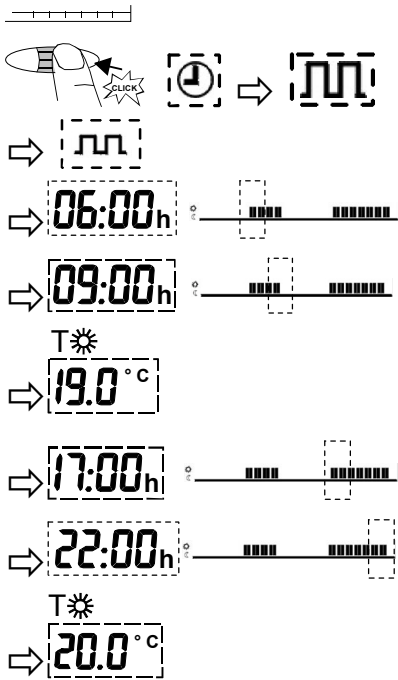
Changing temperatures long-term



If no button is pressed for 10 seconds, the setting displayed will be accepted and the initial display will appear again.

1. Press: You enter the menu level; **the clock flashes.**
2. Roll: Towards the display; menu **item T flashes.**
3. Press: Select the next setting variable; **setpoint T flashes.**
4. Roll: Readjust the comforttemperature.
5. Press: Select the next setting variable; **setpoint T flashes.**
6. Roll: Readjust the Economytemperature.
7. Press: Select the next setting variable; **setpoint T flashes.**
8. Roll: Readjust the frostprotection-temperature.
9. Press: Select the next menu; **heating periods flashes.**
(Change not necessarily required)

Settings for automatic operation with 2 heating periods



If no button is pressed for 10 seconds, the setting displayed will be accepted and the initial display restored.

1. Press: You enter the menu level; **the clock** flashes.
2. Roll: Away from the display; **menu** flashes.
3. Press: Select the next menu item; **heating period** flashes.
4. Press: Select the next setting variable; **start time** of the 1st period flashes.
5. Roll: Set the start time.
6. Press: Select the next setting variable; **end time** of the 1st period flashes.
7. Roll: Set the end time of the 1st period.
8. Press: Select the next setting variable; **setpoint** of the 1st period flashes.
9. Roll: Adjust setpoint of the 1st period.
10. Press: Select the next setting variable; **start time** of the 2nd period flashes.
11. Roll: Set the start time.
12. Press: Select the next setting variable; **end time** of the 2nd period flashes.
13. Roll: Set the end time of the 2nd period.
14. Press: Select the next setting variable; **setpoint** of the 2nd period flashes.
15. Roll: Adjust setpoint of the 2nd period.
16. Press: Return to the current program.

24-hour operation

24-hour operation with only one heating period (the heating period will automatically be generated from the current 24-hour program).

Start of the first heating period, end of the second heating period, plus the currently adjusted comfort temperature setpoint.

Retrieving the default values

Press the button behind the small opening for at least one second, thus resetting the user-specific settings to their default values (the heating engineer settings will remain unchanged).

The clock starts at 12:00.

When making a reset, all display fields will light up.

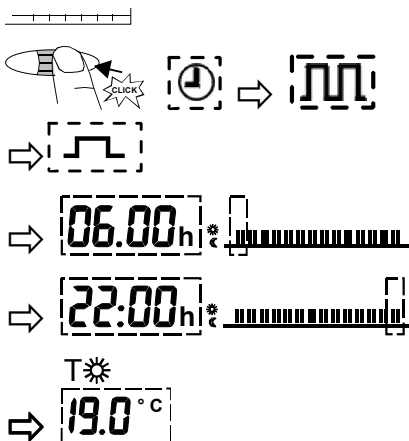
Default values

Factory settings for heating

Operating mode			
Start of continuous operation	00:00	00:00	00:00
End of continuous operations	24:00	24:00	24:00
Setpoint of comfort mode	19 °C		
Setpoint of economy mode		16 °C	
Setpoint frost protection			5 °C

Operating mode	Auto	
Selected periods		
Start of period 1	07:00	06:00
End of period 1	23:00	09:00
Start of period 2		17:00
End of period 2		22:00
Setpoint of period 1	19 °C	19 °C
Setpoint of period 2		20 °C

Settings for automatic operation with 1 heating period



If no button is pressed for 10 seconds, the setting displayed will be accepted and the initial display restored.

1. Press: You enter the menu level; **the clock** flashes.
2. Roll: Away from the display; **menu** flashes.
3. Press: Select the next menu item; **heating period** flashes.
4. Roll: Towards the display; menu item **heating period** flashes.
5. Press: Select the next setting variable; **start time** flashes.
6. Roll: Set the start time.
7. Press: Select the next setting variable; **end time** flashes.
8. Roll: Set the end time.
9. Press: Select the next setting variable; **setpoint** flashes.
10. Roll: Adjust **setpoint** .
11. Press: Return to the current program.

Changing the batteries 2 Alkaline batteries type AAA 1.5 V

When this symbol appears, the batteries must be replaced within 3 months.

1. Remove controller from its base.
2. Open battery compartment at the rear and replace the batteries.
3. Close battery compartment and replace the controller.

Note:

When changing the batteries, the current data are maintained for a maximum of one minute.