
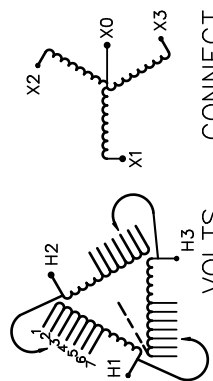
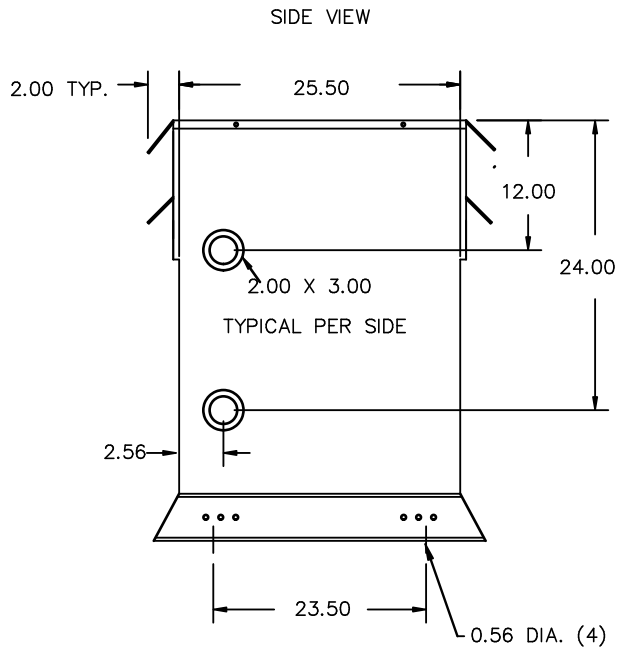
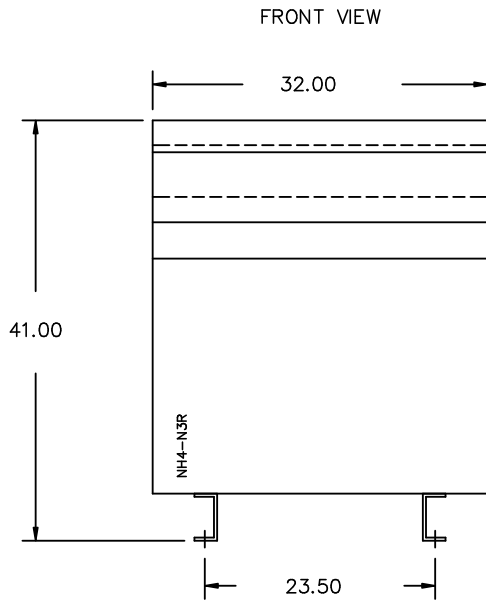


REVISION	DATE	BY	DATE	BY
		DRAWN	06/12/04	JW
		CHEK'D		
		VERIF'D		

Confidential - Property of Siemens Industry, Inc. Building Technologies Division		
CUSTOMER		
ORDER NO.	DWG. NO.	
	3F3Y112K13TP1	SH 1 OF 2

SIEMENS

<p>CATALOG NO. 3F3Y112K13TP1</p> <p>SERIAL NO. SERIES H</p> <p>112.5 kVA 60 Hz 3 PHASE</p> <p>5.6 % IMP AT 170 °C</p> <p>150 °C RISE °C AVG. AMBIENT</p> <p>220 °C TEMP CLASS °C MAX. AMBIENT</p> <p>PRIMARY (H1 H2 H3) 480V V</p> <p>SECONDARY(X0 X1 X2 X3) 208Y/120V V</p> <p>WINDING MATERIAL AL</p> <p>ENCLOSURE TYPE NEMA-3R WEIGHT 800 LBS</p> <p>ENERGY EFFICIENCY NEMA TP 1-2002</p> <p>SPACINGS BETWEEN ENCLOSURE AND ANY ADJACENT WALL SHALL BE A MINIMUM OF 6 INCHES</p> <p>ELECTROSTATIC SHIELD SUITABLE FOR NON-SINUSOIDAL CURRENT LOAD WITH A K-FACTOR NOT TO EXCEED 13</p> <p>SUITABLE FOR INDOOR OR OUTDOOR LOCATIONS BEFORE HANDLING, INSTALLING AND OPERATING, SEE INSTRUCTION MANUAL</p> <p>NEMA Class ANN Dry Type Transformer Siemens Industry, Inc. Norcross, GA</p>	<p>3F3Y112K13TP1</p> 	 <p>VOLTS CONNECT</p> <p>504 1</p> <p>492 2</p> <p>480 3</p> <p>468 4</p> <p>456 5</p> <p>444 6</p> <p>432 7</p>
		<p>TYPE K</p> <p>UL LISTED</p> <p>DRY TYPE TRANSFORMER 7705 E112313</p> <p>SP® LR 3902</p>



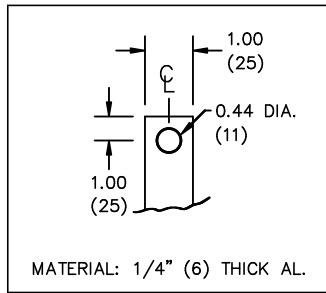
All Dimensions in inches

ENCLOSURE COLOR :ANSI 61 GREY – OUTDOOR

H.V.1. TERMINAL DETAIL

L.V.1. TERMINAL DETAIL

MECHANICAL TYPE LUGS INCLUDED
SUITABLE FOR 250MCM-6 CU/AL
CONDUCTORS
1 CONDUCTOR PER PHASE



CUSTOMER NOTES:

- HV1 TERMINATED AT TOP FRONT
- LV1 TERMINATED AT COIL FACE

Confidential – Property of
Siemens Industry, Inc.
Building Technologies Division

REVISION	DATE	BY	DATE	BY
			06/12/04	JW

CUSTOMER	
ORDER NO.	DWG. NO.
	3F3Y112K13TP1
SH 2 OF 2	

0.1 rbhata 2011/05/27 10:14